



YOUR FREE COPY

THE *Eneabba*

WINTER 2025 ISSUE 21

Very Cool Customers

BROOKS' CLIENTS ATTEND 7TH XCMG CUSTOMER FESTIVAL

The story of *Eneabba*



When 23-year-old Doug Brooks recognised an opportunity to hire out equipment to the WA mining industry in 1979, he knew it was something he had to pursue. Doug scrambled together every dollar he had, to purchase two disassembled compressors, with the remainder of the bill being settled by bankcard. He opened 'Brooks Hire Service' and ran the business from a shed in the remote WA town of Eneabba. All the while, Doug was living in a 'humpy' at the rear of the shed. There were many that warned him of the difficulty of starting a new business in a very competitive industry, but Doug was determined and it was only a matter of time before he was turning a profit on his compressors. What started as two compressors on hire, soon turned into twelve pumps on hire, but the turning point came when Doug purchased his first piece of mobile equipment: an eight tonne JEC crane. There are many great stories that came out of that shed in Eneabba. It was the foundation of Brooks Hire and the place where all of the 'hard yards' were done. Eneabba is remembered as the birth place of Brooks Hire Service.

Your first choice for

MEDICAL AIR AMBULANCE **Flights**

Medical Air is an accredited provider of national and international medical evacuation flights.

- 6 x Intensive Care Unit (ICU) fitted Learjets
- Australian doctors, medical staff, and pilots on standby
- To and from any country to anywhere in Australia
- Complete bed to bed transfers, including visas
- Private and insurance funded flights



☎ 1300 MED AIR (633 247)
@ medical@medicalair.com.au
🌐 medicalair.com.au

MEDICAL AIR AMBULANCE



From the MD...

It was great to attend the Bauma machinery show in Germany where I finally got to meet some of our equipment suppliers face to face for the first time since launching Brooks Equipment Sales in 2020. Whilst consolidating these relationships, I also had the opportunity to negotiate supplier agreements with other small equipment manufacturers, which has filled in any gaps in our product offering. XCMG hosted us over there and it is remarkable to see how truly international the company is and to meet all of their successful European dealers, amongst others.

It has been a busy travelling season for me, also visiting China again, where we were very proud to host some of our valued clients at XCMG's 7th International Customer Festival. It's such a great opportunity for our XCMG buyers to walk through the manufacturer's production floor and see where their machines are coming from. The feedback has all been positive, and one customer placed a large order for machines after seeing their production in person.

In other parts of the business, Brooks is currently working on drastically strengthening our mobile mechanical workforce. We have invested heavily in new vehicles for this business unit already, with some exciting new FIFO and DIDO opportunities (based predominantly in WA) for qualified tradespeople. If you know of anyone who is looking for a new challenge, point them towards Brooks.

As a whole, Brooks is expanding in all directions. We've just purchased three new branches in the eastern states. Orange in NSW, is the first new branch to open this year. It's up and trading with hire equipment ready to work. Same goes with Gladstone in QLD, which closely followed. Lastly, the Newcastle branch in NSW is set to open in late August.

Stuart Brooks
Managing Director



03 **Very Cool Customers**
Brook's clients attend 7th XCMG Customer Festival



05 **Powering Progress**
Shamrock Civil delivers on the front line



07 **Driving WA Forward**
Tonkin Highway Extension Project



09 **More Than Maintenance**
Perth Property Maintenance Services



11 **Showstopper!**
BAUMA 25 ups the ante



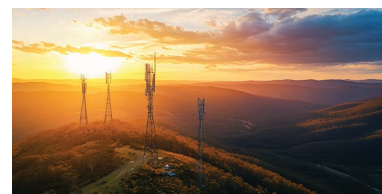
13 **A Legacy Built to Last**
SBA Earthmoving Attachments



15 **See Change**
Opportunity in rural Australia



17 **Excellence in Industry**
Brooks Hire awarded finalist at HRIA Awards



18 **Orange is Gold**
Brooks opens a new branch in Orange, NSW

BROOKS

CONTACT DETAILS

Brooks Hire Service Head Office

30 Coulson Way
Canning Vale WA 6155

Phone: 1300 276 657

Email: sales@brookshire.com.au

www.brookshire.com.au

The Eneabba is a Brooks Hire Service Pty Ltd publication. All photographs and written articles remain the property of Brooks Hire Service Pty Ltd. No reproduction in whole or in part of this publication is allowed without the permission of the Managing Director.

If you would like to make a submission, please email marketing@brookshire.com.au

Digital Distribution 12,884
Printed Copies 5,000



19 **New Machines**
Look what's just rolled into the yard



21 **Tradie Paradise**
Perth tradies turn out in force



23 **Events and Exhibitions**
Out and about with Brooks



25 **Brooks Around the Nation**
Branch news from around the country

27 **Welcome Aboard**
Meet the new faces at Brooks

31 **The Puzzler Page**
Flex your brain over a cup of coffee

33 **Snap That**
Staff photography competition

35 **Equipment Hire List**
View our entire fleet with specs



Very Cool Customers

Brooks' clients attend 7th XCMG Customer Festival

From the 20th to the 23rd May, Xuzhou, China was abuzz with activity as guests from all over the world gathered to celebrate XCMG's 7th International Customer Festival. More than 2,000 customers from over 80 countries, as well as 60 journalists from China and abroad witnessed the largest edition of the Festival to date.

The Chairman of XCMG, Mr Yang Dongsheng opened the ceremony with expressions of gratitude and respect to the partners from all over the world. "Every breakthrough and leap forward in XCMG's globalisation journey is full of the trust and entrustment of our global customers," said Mr Yang. "It's the cohesion of everyone's wisdom and contribution and a chapter of the times we grow together."

"Nothing, not even mountains and seas, can separate the people with common goals and ideals."

OLD CHINESE PROVERB QUOTED BY MR YANG

The theme this year, was "Solid Innovation for Green Tomorrow". Over four days, XCMG held a lineup of activities designed to highlight green technology, digital transformation, and global collaboration.



This year, Brooks Equipment Sales invited several key clients to China to enjoy the festivities on offer. Dave Della Bona from WA Limestone was a part of the entourage, along with Paul and Elvis Dujmovic from DTMT Construction, and Eanna Doolin and Martin Lee from Doolee Construction. Our special guests were accompanied by Stuart Brooks, Vinny Yap, Nathan Fenemer, and Joe Goulding from the Brooks group of companies.



Key highlights of the event included:

"Night of Machinery" Opening Ceremony

A visually stunning spectacle blending engineering aesthetics with robust performances, set against the night sky to symbolise a future powered by intelligent and sustainable machinery.



Green Innovation Showcase

Live demonstrations of XCMG's eco-friendly solutions including energy-efficient mining trucks deployed in Australia. Guests were able to experience hands-on simulations of the trucks in real-world scenarios.

Globe Sports Carnival

A sports event uniting clients and XCMG teams through friendly competitions, reinforcing camaraderie.

Cultural Immersion Tours

Tailored itineraries exploring Xuzhou's 2,000-year-old Han Dynasty heritage, alongside modern attractions.

Eight Thematic Product Information Sessions

Interactive exhibitions featuring XCMG's latest advancements in smart construction, mining, and infrastructure development.



The festival attracted international attention with media outlets from all over the world drawn to cover the event. Stuart Brooks was invited to speak on CGTN television as a spokesperson from Australia.



Brooks' clients were treated to the full Chinese cultural immersion experience including foot massages, fireworks, and traditional round table Chinese banquets.

"The whole experience was fantastic," said Paul Dujmovic from DTMT. "Seeing the XCMG factory in person was really satisfying. We've invested in several XCMG machines, so seeing the quality that goes into their manufacture is reassuring for us."

Brooks would like to thank XCMG for inviting us to attend their 7th International Customer Festival. We look forward to next year's event and hope to take more clients along with us again.



Powering Progress

Shamrock Civil delivers on the frontline

Delivering high-quality infrastructure solutions across Australia for over three decades, Shamrock Civil Engineering (SCE) continues to carve a leading legacy in Australian civil construction.

Operating within the transport, defence, energy and renewables, utilities, education, water infrastructure, and waste and resource recovery sectors, the team provides a wide array of civil construction services. These include bulk earthworks, roadworks, concrete structures, drainage systems, service installations, pavements, bridges and landscaping.

Whether constructing heavy-duty pavements for mining operations in regional Queensland or delivering complex earthworks for renewable energy projects in South Australia, SCE prides itself on its ability to complete complex civil construction projects in diverse and often remote Aussie environments.

Reaching Remote Australia

Understanding the complexities of delivering infrastructure in areas where access is limited, environmental conditions are unpredictable, and deadlines are tight, the team's ability to mobilise quickly and establish self-sufficient, well-managed operations on-site enables consistent delivery of high-quality outcomes.

From remote pipeline construction and regional airport upgrades to defence infrastructure in isolated areas, Shamrock Civil is well-equipped to manage the unique risks associated with off-grid civil construction.

One such project is the Nackerroo Airfield Upgrade at the Bradshaw Field Training Area near Timber Creek, in the Northern Territory. Engaged by Sitzler, Shamrock Civil was responsible for the full civil works package to extend and upgrade the existing 1.5-kilometre airstrip.

The project included significant earthworks, pavement construction, stormwater management, and the installation of airfield infrastructure, which enables the facility to accommodate C-17 Globemaster and V-22 Osprey aircraft, enhancing Defence's strategic aviation capabilities.

SCE undertook onsite production of over 200,000 tonnes of material and established an on-site quarry, delivering major cost efficiencies. Despite the remote location and logistical challenges, Shamrock's strong project management capabilities and lessons learned from previous work at Bradshaw ensured the team's continuity of high performance.

The team attributes their ability to coordinate with local stakeholders, manage remote logistics, and deliver under Defence protocols, to their reputation as a trusted partner for complex infrastructure delivery in Australia's most isolated regions.





National Recognition

With such large industry coverage, the team must tailor their expertise to meet the specific demands of each sector. In energy and renewables, the company supports the national shift to clean power by delivering civil works for solar farms, battery storage sites, and grid infrastructure.

In the education sector, SCE partners with schools and universities to provide safe, modern environments for learning and development, along with pathway programs, on how school leavers can join the construction industry.

Approaching each project with adaptability, cultural awareness, and a deep respect for local communities and the environments they work in, the company's track record of delivery has been consistently recognised on a national level. In the latest Australian Defence Magazine (ADM) rankings, Shamrock Civil came in at number three, among the Top 20 subcontractors to the Department of Defence.

Recent projects include the upgrade of base facilities, airfields, and vehicle training grounds, all aimed at supporting the operational readiness of Australia's Defence Forces.



SHAMROCK CIVIL

Safe • Sustainable • Smart • Solutions

For more information about Shamrock Civil's services, projects, and initiatives, visit www.shamrockcivil.com.au

Ensuring Veterans' Future

A strong emphasis is placed on creating local employment opportunities and investing in regional development. Through close collaboration with local councils, subcontractors, and suppliers, the team aspires to contribute to more resilient, self-sufficient communities.

The team is also deeply committed to supporting Australian Defence Force (ADF) veterans. Recognising the leadership, discipline, and problem-solving skills of veterans, Shamrock Civil looks to actively create opportunities as they transition to civilian careers.

Through the creation of employment programs, training pathways, and mentorship initiatives, and working in partnership with veteran support organisations, the SCE ensure that ex-service personnel are equipped and supported as they enter the civil construction workforce.

"We aim to create meaningful opportunities for growth and development," said Managing Director, Brendan Kealy. "These initiatives not only benefit our veterans but also enrich our entire team, promoting a culture of mutual respect and understanding."

Looking to the future, SCE remains focused on sustainable growth, community impact, and continuous innovation. With its head office in Brisbane and regional offices in Townsville, Adelaide, Melbourne, Darwin and Rockhampton, Shamrock Civil maintains a strong national presence.

This footprint allows the company to efficiently deliver projects across the East coast of Australia while remaining responsive to the specific needs of local communities.

Whether in a busy capital city or a remote outback location, Shamrock Civil Engineering continues to build the infrastructure that powers Australia forward, supports veterans into meaningful new careers, and contributes to a better, more connected future.

Driving WA Forward



Tonkin Highway Extension Project

In January of this year, Perth's south-eastern corridor took another step forward as a major works project entered into the delivery phase. Awarded to the Tonkin Extension Alliance, the \$1 billion project will see a 14-kilometre extension of Tonkin Highway from Thomas Road to South Western Highway, and Thomas Road upgraded: including a 4.5-kilometre duplication between Kargotich Road and South Western Highway.

Jointly funded by the Australian and Western Australian Governments, the Alliance consortium comprises Georgiou Group, BMD, Civcon Civil and Project Management, BG&E, and GHD, in partnership with Main Roads WA.

Aligning with additional projects underway and in the pipeline, the Tonkin Highway Extension and Thomas Road Upgrade aim to remove heavy vehicles from local roads, facilitating more efficient movement of freight between Perth and the South West.

Project Overview

An area of suburbs that connect Perth's inner city with its outer regions, Main Roads speaks on the importance of upgrading infrastructure in the project's zone.

"The south-east corridor is an important and fast-growing area. Byford, Armadale, Kelmscott and Gosnells are faced with large volumes of heavy vehicles and other through traffic, travelling to and from the South West and Wheatbelt regions.

"The extension of Tonkin Highway will reduce traffic pressure and travel time for private and freight traffic, improve road connectivity between current and future residential, business and employment precincts, and improve safety."



Tonkin Extension Alliance information session (photo credit: CCF WA)



Bishop Road Interchange - Tonkin Highway to Southwest Highway Extension

With construction having begun in mid-2025, the project will deliver 14 kilometres of new highway, a widened Thomas Road for safer travel, new interchanges and bridges to improve traffic flow, and enhanced shared paths for pedestrians and cyclists.

In a 2020 statement released by the McGowan Labor Government, Transport Minister Rita Saffioti shared that "More than 19,000 vehicles currently access the busiest sections of Thomas Road each day, including 2,300 heavy vehicles. This number is expected to increase with future private sector development in the area."

Across the 2020-21 period, almost \$27 million was allocated through the Black Spot Program, to upgrade some of Western Australia's worst roads. Kargotich Road – which was listed as a State Black Spot in 2018 – was allocated \$800,000 to undertake safety improvements at its intersection with Thomas Road in Oakford.

Further enhancing the road's safety, the coming Thomas Road Upgrade will see:

- 4.5 kilometres road duplication from Kargotich Road to South Western Highway
- New grade-separated interchange at Thomas Road and Tonkin Highway
- 4.5 kilometres shared path (south side) and new signalised equine crossing
- Intersection upgrades
- Noise and visual screening walls
- Full lighting along upgraded corridor
- Upgraded to four-lane dual carriageway (70 kilometres per hour speed limit)

Tonkin Highway's extension project comprises of:

- 14 kilometres four-lane dual carriageway (Thomas Road to South Western Highway)
- Principal Shared Path (PSP) on eastern side with key road connection
- 7 underpasses + 1 PSP footbridge
- 7 bridges, including 2 rail bridges
- Grade-separated interchange at Bishop Road
- 5 new roundabouts
- Local road links & emergency access improvements
- Noise walls in sections, screening, and lighting



Orton Road Roundabout - Tonkin Highway to Southwest Highway Extension

Works will include the clearing/ topsoil strip of approximately 190 hectares, and the addition of 15 kilometres of noise walls, 5.4 kilometres of retaining walls, 74 kilometres of streetlight conduit, and approximately 1,600 street poles. Not forgetting the installation of Pegasus crossings for equestrian use.

A staggering 470,000 square metres of pavement will be laid on Tonkin Highway, and 185,000 square metres on Thomas Rd and its side roads. 116,000 square metres will be surfaced for Principle Shared Path use.

Sustainable Construction

The Tonkin Extension Alliance team have stated their commitment to utilising sustainable practices. Water-saving strategies and the use of recycled materials are being prioritised, alongside proactive engagement with suppliers to explore innovative construction methods.

The project aims to improve Aboriginal participation, promote workforce diversity, and support long-term employment for under-represented groups. Apprenticeships and traineeships are being actively encouraged, and a strong emphasis is placed on building industry capacity and capability.

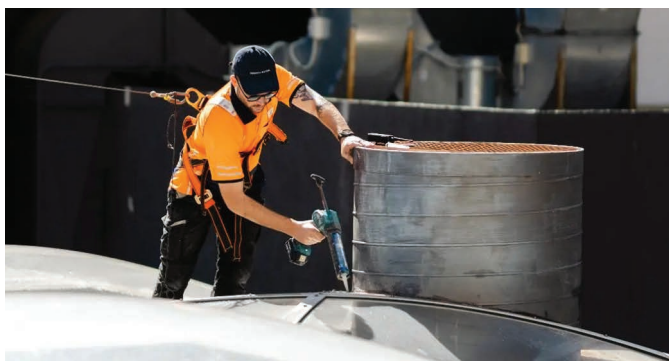
As part of the contract, and designed to promote fair work practices, the project will trial the Western Australian Best Practice Industry Conditions (WABPIC). Applied to a number of packages of works, these Practices set minimum employment standards for on-site workers.

"The project is part of a broader investment to the Tonkin Highway that will deliver a high-standard north-south transport link, including key upgrades such as the Tonkin Highway Gap," said Saffioti, discussing additional construction developments in the area.

Significantly enhancing the efficiency and safety of Perth's transport network, and supporting the region's growth and development, Federal Member for Burt, Matt Keogh, shared: "This will make a huge difference to everyday life - whether it's dropping the kids at school or going up to the city, this is game changing project for the south-eastern suburbs."

Construction has now commenced, with completion expected by 2028.

More than Maintenance



Perth Property Maintenance Services

Nestled in the heart of Perth's CBD, PPMS are working to deliver a unique level of property maintenance across the WA region. In operation for over two decades, the family-owned business provides commercial and strata property maintenance with a proud Western Australian identity.

What started from humble beginnings, has grown into a versatile, full-service operation, known for its reliability, professionalism, and personal touch. The team offer a variety of services, including property maintenance, commercial cleaning, signage, and building renovations.

Founded and led by Steve Smith-Halvorsen, PPMS was built on a simple but powerful vision: to take the stress out of property upkeep.

"Our goal was never just to fix things," says Steve. "It was to give property managers, owners, and tenants peace of mind by being the team they could count on - day in, day out."

From Fixes to Fit-Outs

From small handyman tasks to full-scale renovations and ongoing site maintenance, the PPMS team delivers a broad range of services.

These include cleaning, high-pressure washing, patching, painting, gutter and fascia repairs, tiling, carpentry, electrical work, plumbing, glazing, shade sail installations, and much more.

The team is also highly experienced in project work, whether it's an office fit-out, end-of-lease make-good, or retail refurb. Working alongside a strong network of long-term trade partners allows the team to offer a seamless, one-stop solution, rather than clients organising multiple contractors.

"Our team doesn't cut corners. We believe in honest communication, transparent pricing, and following through on every promise," says Operations Manager, Ryan Smith-Halvorsen. "We work around client schedules, minimise disruption, and treat every job site with the same care we'd expect in our own home or workplace."



Lighting Up William Street



In a recent project completed by the team, PPMS installed a high-visibility LED Light box sign at the Perth CBD restaurant, Light Years. Looking to elevate their street presence with a modern and impactful sign, the PPMS team produced a design that would stand out in the high-traffic area while complementing the streetscape.

"Our primary goals were to enhance visibility, improve brand recognition, and ensure the signage was energy-efficient and low maintenance," shares Steve. "We conducted a comprehensive site inspection during both daylight and evening hours to understand how the natural and ambient lighting interacted with the façade."

The team consulted with the client regarding brand colours, logo proportions, and how they envisioned their presence both during the day and after dark, to determine the appropriate brightness level, positioning, and materials for optimal effect.

When asked if there were any site-specific challenges, Steve replied "Absolutely. The building's heritage elements and the busy nature of William Street meant we needed to carefully plan access, manage pedestrian flow, and use low-impact equipment during certain hours. We also had to work within tight council regulations, ensuring all fixings were non-invasive and reversible where needed."

The team's solution was to utilise custom mounting brackets and a discreet cable management system that preserved the building's character.

With the PPMS team managing the installation – ensuring safety and compliance, and that everything ran to schedule - they worked alongside their trusted network of local signage manufacturers and certified electricians.

From initial consultation to final installation, the project spanned approximately three weeks. "The actual install on-site was completed over two days, with minimal disruption to the client's operations. Our team coordinated closely with both the business and Property Manager to ensure a smooth and efficient delivery."

For the Community

Behind every maintenance job, there's a bigger mission. PPMS isn't just about buildings; it's about the people who use them, the communities they sit in, and the country they stand on.

"We pride ourselves on being easy to work with," says Business Development Manager, Coral. "It's about more than ticking boxes. It's about being approachable, dependable, and genuinely helpful."

Committed to innovation and forward-thinking practices, the company has built relationships that go beyond the scope of work. They've leveraged technology, sought to expand service capabilities, and partnered with local councils and Indigenous businesses, seeking ways to support stronger, more inclusive communities.

"We acknowledge the Traditional Custodians of the land we work on and are actively building respectful partnerships with First Nations communities," says Steve. "It's part of our ongoing goal to be not just a service provider, but a good community partner."

What makes PPMS feel different isn't just the process or the purpose: it's the people. The dynamic team includes Ryan (Maintenance & Signage Manager), Sam (Web & Advertising Specialist), and Michelle (Admin & HR); who together, blend technical expertise with creative energy and client-first service.

They've even extended their passion for detail into a sister business: Prime Signs Creative FX, offering full-service signage solutions, from concept and design to fabrication and maintenance.



Whether it's signage, electrical work, or commercial property upgrades, Perth Property Maintenance Services promise the capability of a large contractor with the flexibility and personal service of a local business.



Get in touch with the team on +61 8 9288 4467 or via email at bdm@ppms.au

Showstopper!



BAUMA 2025 ups the ante

Just when you think you've seen it all, BAUMA raises the stakes with an absolutely mind blowing construction show like no other.

BAUMA is the world's leading trade fair for construction machinery, building material machines, mining machines, construction vehicles, and construction equipment. Held in Munich, Germany, from the 7th to the 13th April, BAUMA 2025 levelled up this year with a strong focus on automation and sustainability.

The lead up to the event was contentious, with mounting discussions surrounding Trump's US trade tariffs, however the economic headwinds didn't deter the 600,000 strong visitors, from over 200 countries, that flowed through the Messe München venue. Included in those visitors, was Stuart Brooks, Managing Director of the Brooks group of companies, his wife Cassie Brooks, and their children, Maisie, Dom, and Tilda.

Stuart Brooks was there to explore new equipment and technologies for the Australian market. Proving it was the place to be, he also visited existing suppliers, XCMG, Techking Tires, Italdem, Dozco, Genmac, and Husqvarna whilst there.





Stuart, Cassie, Maisie, Dom, and Tilda Brooks at BAUMA 2025 in Munich, Germany.

The Topic of Conversation

The key topics of BAUMA 2025 centred around climate-neutrality, and integrated technology systems. Achieving climate-neutral construction in the future requires greater machine efficiency, a more intelligent design of construction processes, optimised machine operation, and the use of alternative energy sources.

A Sustainable Trend

With 3,601 exhibitors, from 57 countries, there were numerous electric battery powered, and hydrogen powered machines on display.

Amongst XCMG's impressive display of electric machines was the XE215 EV excavator. This 25 tonne excavator features a 400-kWh lithium-ion phosphate battery that provides 6 - 8 hours of continuous operation. The battery can be topped up in as little as 1.5 hours using a DC fast charging system. Alternatively, the battery can be swapped over with a fresh unit in just 3 minutes.

Dual branding with German manufacturer, Schwing, XCMG also unveiled the UltraEco pure electric mixer truck. The cooperation between the two companies shows a commitment to delivering sustainable solutions worldwide.

On the hydrogen front, BAUMA showcased hydrogen powered excavators from Hyundai, Hitachi, and Liebherr. While Yanmar, KTEG, and Bosch displayed their hydrogen powered engines. The engines work by combining hydrogen and oxygen to create electricity.



Networking Machines

Another key topic at BAUMA 2025, was the digitisation of construction machinery. In networked construction, digital technologies and communication systems are integrated to improve productivity, reduce costs, and increase safety. BAUMA 2025's showcase of startups presented digital processes for asset management, as well as robotic and autonomous solutions.

Swiss exhibitor, AITHON Robotics, presented their latest project, a drone that is able to access hard-to-reach infrastructure and can perform power-intensive tasks with high precision such as bridge refurbishment, reinforcement detection, drill core removal, and sensor installation. The use of a robot for these tasks drastically reduces the risk of accidents for human operators.

"The technology on display at BAUMA was an eye opener," said Stuart Brooks. "Every year, they come up with new and inventive ways to improve production and safety. I can't wait to see what they've got on offer at the next convention," he continued.

BAUMA Germany is held in Munich every three years. The next BAUMA Germany is scheduled for 3rd - 9th April 2028. With global mining and construction markets continuing to surge forward, it is predicted that the event will attract record numbers of industry professionals seeking face to face business opportunities.



A Legacy Built to Last

SBA Earthmoving Attachments 45 YEARS EST 1980

With over four decades of experience and three generations at the helm, SBA Earthmoving Attachments has earned a reputation synonymous with quality, reliability, and innovation in the heavy equipment industry. From humble beginnings in 1980 to the company's nationwide operations today, SBA continues to deliver high-performance solutions to Australia's earthmoving sector.

Can you tell us about the range of products you offer and the industries you service?

At SBA, we manufacture a wide range of earthmoving attachments built for durability and efficiency. Our lineup includes excavator and loader buckets, quarry buckets, quick hitches, tilt hitches, as well as attachments for demolition, recycling, and material handling.

We proudly service key industries including civil construction, quarrying, mining, demolition, recycling, and waste management. Whether it's general-purpose gear or specialised custom builds, our products are trusted to perform in the toughest environments across Australia.





Originally established as 'Salmon Industries' in 1980, and rebranding to 'Salmon Buckets and Attachments' in 2000, what was the main driving force to rebrand to 'SBA Earthmoving Attachments'?

The original name, Salmon Industries, represented our family roots and early manufacturing focus. In 2000, when John Salmon took over from founder Trevor Salmon, the rebrand to Salmon Buckets and Attachments signalled a sharper focus on attachments - our growing strength.

As the business expanded, we rebranded again to SBA Earthmoving Attachments to modernise our image while keeping our legacy front and centre. The new name reflects both who we are and what we specialise in, giving us a stronger identity in a competitive market.

Looking back over the years, what are some of the most memorable moments or achievements for the company?



Providing attachments to world leading Original Equipment Manufacturers and dealers has been a strong focus of SBA. We have secured contracts to support these clients nationally and worked very closely with their Sales, Engineering, and aftermarket teams to provide both Excavator and Wheel Loader attachments.

Since 2019, SBA has worked with the McGrath Foundation to support their Cancer Care nurses. Each year we manufacture a range of attachments painted pink to help raise awareness and support. #DIGITPINK

Another proud moment has been the involvement of the third generation. With John's son Will now active in the business, SBA continues as a true family operation, combining experience with new ideas and energy for the future.

The earthmoving equipment sector has faced various challenges, including economic fluctuations and shifting regulatory standards. How have these challenges impacted SBA and how has the company adapted?

The sector has certainly faced its share of ups and downs, from supply chain disruptions to changes in compliance and safety regulations. At SBA, we've always adapted by staying agile; whether that's refining production processes, investing in local manufacturing, or diversifying our product range. Maintaining strong supplier relationships and listening closely to customer needs has helped us stay ahead of challenges and continue delivering value, even in difficult conditions.

How have your products evolved? Are there any standout innovations or changes that you're especially proud of?

Our products have evolved in line with industry demands, becoming more durable, efficient, and operator friendly. We've introduced stronger materials, precision welding techniques, and improvements in design for easier maintenance and better site performance. Our quick hitches and tilt hitches have particularly benefited from innovation, offering operators more flexibility and improved control. Every change we've made has been with one goal in mind: building attachments that help our clients work smarter, safer, and faster.

As SBA has grown over the years, how has customer feedback influenced your products and services?

Customer feedback has played a huge role in shaping our business. Being a family-run operation, we're close to our clients and always open to listening. Many of our best innovations have come directly from conversations with people in the field who use our gear every day. That feedback has helped us improve performance, streamline manufacturing, and even create new product lines to meet specific needs. It's also reinforced our focus on customisation, because we know no two job sites are the same.

With 45 years of success behind you, what does the next chapter look like for SBA?

Looking ahead, we're excited about continuing to grow and innovate. With Will Salmon now involved in the business, the next generation is bringing a fresh perspective and energy, especially in the areas of digital technology and process efficiency. We're investing in expanding our capabilities across our locations in NSW, QLD, and WA, and exploring new product development to serve even more sectors. We're also looking at opportunities to scale our presence nationally and, potentially, explore export markets.

Our goal remains the same as it's always been: to deliver quality attachments that our customers can rely on - and to keep doing it with the same values we've had since day one.

To find out more, or to get in touch with the SBA team, visit www.salmonbuckets.com.au

See Change

Opportunity for rural Australia



In a trend of the decade, Australians are increasingly trading cities for regional living, in search of a new lifestyle and opportunities in regional and rural communities. As of the 2023–2024 period, Australia's regional population has reached approximately 9.91 million, marking a 1.3% annual increase and a 6.3% rise since 2019 (Regional Australia Institute [RAI]).

Research by the Australian Housing and Urban Research Institute (AHURI), published in March 2025, found that since 2007 – apart from one year – more people have moved from capital cities to regional areas than the reverse.

The main drivers for relocating to capital cities are employment opportunities (28%), personal reasons (25%), and lifestyle (15%). In contrast, those moving out of capital cities are most often motivated by a desire for a better lifestyle (28%), followed by personal reasons (25%), more affordable or suitable housing (21%), and employment (20%). Additionally, people moving to cities are more likely to do so for education-related reasons (12%) compared to those leaving cities (3%).

A growth rate that reflects the reshaping of Australia's demographic and economic landscape, it also demonstrates a need for greater resources and industry opportunities. Growing populations fuelling demand for housing, public infrastructure, and community amenities, has triggered a building boom in many rural towns with a shortage of construction workers in these communities, hindering the industry's ability to keep up.

Growing Pains

As communities grow, so do the challenges that come with expansion. Local councils and developers are increasingly struggling to keep up with the rising demand for infrastructure and housing. One of the most significant bottlenecks is a shortage of skilled labour in the construction industry. Carpenters, plumbers, electricians, and machinery operators are in short supply in many rural areas. The problem is exacerbated by the fact that most tradespeople remain concentrated in cities, where support and resources are more readily available.



This mismatch has led to delayed construction timelines and increased costs, putting pressure on already stretched local governments and communities.

The RAI's CEO, Liz Ritchie, speaks on the critical demand for skilled workers in regional communities. "In February alone there were 65,000 jobs advertised online across regional, rural and remote Australia. These include for doctors, teachers and trades workers – positions desperately needed to support the growing regional population."

The move to regional communities is also creating social pressures, with rising housing demand driving up prices and a shortage of labour limiting new construction. This surge affects vulnerable populations the most.

"House prices in regions further away are impacted as low-income households are forced to move significant distances looking for housing they can afford," explains Professor Nicole Gurrán of the University of Sydney, who led the AHURI research. "The research highlights the growing connections between urban and regional house prices. Importantly, with more people moving to regional areas putting pressure on housing costs, low-income renters in regional areas need support through financial help and rental relief."

Retaining a Regional Workforce

In response to the skills shortage felt nationwide, incentives to acquire and keep construction workers have been introduced. One of the cornerstone initiatives is the introduction of the Fee-Free TAFE Skills Agreement, designed to lower the barrier to entry for individuals seeking to gain qualifications in high-demand fields like carpentry, plumbing, and electrical work. Together with states and territories, the Commonwealth Government will deliver over \$1.5 billion in funding for 500,000 Fee-Free TAFE and vocational education and training (VET) places across Australia, from 2023 to 2026.

"Apprenticeship pathways are a key contributor to the workforce – but for adult workers, particularly those supporting a family, the thought of 'restarting' their career with an apprenticeship is a barrier to getting qualified in their trade," Skills and Training Minister Andrew Giles said. "We are making it easier for workers with existing knowledge and skills to get the recognition and qualifications they deserve."

Fast-tracked apprenticeships and increased funding for Registered Training Organisations (RTOs), are also helping to build a localised workforce capable of supporting rural development.

The Labor government's goal to build 1.2 million new homes in five years, will also see the investment of \$78 million to fast track the qualification of 6,000 tradies. From 1 July 2025, the Labor Government will be paying apprentices \$10,000 in incentives to take up apprenticeships in housing construction. In addition to training initiatives, governments are rolling out regional skills relocation incentives. These include relocation grants and wage subsidies to employers who hire and train workers in rural areas.

Sustainable Development

As regional areas continue to see significant transformation driven by population growth and development, there is both a challenge and an opportunity to ensure that this progress is fair and inclusive. Addressing labour shortages in rural Australia requires more than short-term fixes. It demands sustained collaboration between government, industry, and educational institutions.

"We need to understand that the future of Australia has regional Australia at its centre, not at the peripheral. Long gone are the days of regional people leaving in droves, the tables have turned," Ms Ritchie settles. "Now is the time for a national conversation on strengthening our regions, to ensure their position as an economic powerhouse continues." As more Australians embrace regional and rural living, the focus must remain on equitable development, ensuring that these growing communities have the resources, infrastructure, and skilled labour they need to thrive.



Excellence in Industry

Brooks Hire awarded finalist at HRIA Awards



The prestigious Hire Industry Excellence Awards are a showcase of HRIA members who provide outstanding service in all categories of the hire and rental market. The Hire Company of the Year Award recognises hire companies who have gone the extra mile when it comes to customer service, safety and performance.

In February this year, Brooks Hire Service was selected as a finalist in the category of Hire Company of the Year (over \$10 Million revenue). Judges, Bernie Kiekbosch and Tony Crane, flew from Melbourne to Perth, to visit Brooks Hire's Canning Vale, Welshpool, and Kewdale branches.

The judges were assessing the business on:

- Hire Facilities
- Staff
- Plant and Equipment
- Systems and Procedures
- Use of KPI's
- Community Involvement
- People and Culture (including training)
- HRIA Involvement

The entire Brooks team put their best foot forward, showcasing our range of hire equipment and meeting with all departments for discussions.



The Awards & Gala Dinner presentation was held on Thursday 25th May at the HRIA 25 Convention in Melbourne. Jacinta O'Brien and Luke Johnston attended the event on behalf of Brooks Hire.

The competition this year was among the highest calibre to date. Our congratulations go to the winners, RPM Hire (Hire Company of the Year), Green Power Solutions (Hire Company of the Year <\$10m), and Expo Event Services (Events Hire Company).



Golden Orange



Brooks opens a new branch in Orange, NSW

Brooks Hire has recently opened their 25th branch at 20 Cameron Place, Orange, New South Wales.

When looking for a secondary New South Wales location, Doug Brooks thoroughly explored the state's existing earthmoving equipment requirements and its potential for future growth. Orange presented as a golden opportunity due to its agricultural and mining economy.

Located in the Central Tablelands Region of New South Wales, Orange is a well known district for agriculture, as well its proximity to Cadia Gold Mine. Cadia Gold Mine is a large open cut gold and copper mine and a major employer in the region. It is the second largest open-cut mine in Australia, following the Super Pit at Kalgoorlie, Western Australia.

Owned entirely by Newmont Corporation, Cadia Gold Mine produced 597,000 ounces of gold and 98,000 tonnes of copper in the 2023 fiscal year. Newmont has applied to extend the mine's operational life until 2050, proposing the Continued Operations Project (CCOP), which includes the restart of the Ridgeway Mine and enhancements to tailings storage facilities. This development promises increased machinery requirements, as well as site services including portable buildings, and power generation.

The new Brooks branch will incorporate a range of construction and earthmoving machinery for hire, along with site service and access equipment. Currently the Orange branch has excavators from 1.75 tonnes to 45 tonnes available for hire, as well as loaders, tool carriers, service trucks and fuel trailers. New machines and equipment from our other branches is being moved to Orange on an on-going basis.

There is no shortage of space at the new premises which is situated on a 1.66 acre lot with frontage to Mitchell Highway. It features 960sqm of office space over two levels, and high roller door access to the workshop. It's niche location gives truck drivers easy in-and-out access to the yard for pick ups and deliveries.

The opening of the branch has been jointly overseen by Brooks National Operations Manager, Ryan Brown, and North East Operations Manager, David Morrow. Orange local, Shannen Vincent has taken on the role of Workshop Foreman.

If you're in the Orange region and require any type of mining or construction equipment, drop in to Brooks Hire and have a chat with Shannen. If the equipment you need isn't in stock, Brooks has the ability to bring in new equipment for long term hire jobs.

Books Hire Orange: 20 Cameron Place, Orange NSW 2800.

New Equipment

THE BROOKS FLEET OF ASSETS



Isuzu 8 Wheel Service Truck



Komatsu HM400 40t Artic. Dump Truck



Komatsu WA500 Wheel Loader



Isuzu 14KL Water Truck



Atlas Copco PAC H86C Pump



XCMG XE1350 121t Excavator



XCMG XC7-SR08 Skid Steer



XCMG GR1003 Grader



XCMG XP265S Multi Tyre Roller



XCMG XCB18 Forklift



XCMG XS205S Smooth Drum Roller



XCMG XS205PD Padfoot Roller

EOFY bargains were getting snapped up left, right, and centre in the lead up to the end of financial year. Don't worry, we've still got plenty of machines available for sale. Be sure to give one of our friendly sales team a call to get yourself a New Financial Year deal.

Crazy EOFY Sales!



XCMG XG1012 Scissor Lift on Trailer



XCMG XE35U Mini Excavator



XCMG XC7-SR07 Wheeled Skid Steer



XCMG XG1012 Scissor Lift on Trailer



XCMG XS123 Smooth Drum Roller



Italdem GK165S Rock Breaker



XCMG XC7-SR07 Wheeled Skid Steer



Husqvarna LG504 Compactor



XCMG XE90U Midi Excavator



XCMG XE17U Mini Excavator



XCMG XE500LC 50t Excavator



XCMG XC978 Wheel Loader



XCMG XC938 Tool Handler



XCMG XE27U Mini Excavator



XCMG XE55U Mini Excavator



XCMG XE215LC Excavator



XCMG GR3505 Grader

Tradie Paradise



Perth tradies turn out in force

The drizzly winter weather didn't deter Perth tradies from turning out in force to the Perth Tradie Expo (PTE) this year. Held every June, right before the end of financial year (EOFY), the PTE continues to gain traction, with bigger crowds every year.

Bringing together the leading brands in tools, machinery, and commercial vehicles, PTE is a once a year opportunity for tradies, contractors, and business owners to snag an EOFY bargain, with most exhibitors offering serious discounts to attendees.

The Brooks Equipment / XCMG expo stand was no exception, with great value discounts on scissor lifts, mini excavators, and articulated booms. In total, there were 18 pieces of XCMG equipment on display for attendees to touch, sit in, and get a feel for.

"I was really happy with the positive feedback the XCMG brand attracted," said Brooks Equipment General Manager, Nathan Fenemer. "We had loads of people coming through, asking questions, sitting in the machines, and on some occasions, coming back to purchase. There are some happy campers out there who snagged a great deal for sure."

Overall, Brooks Equipment sold a total of 7 machines at the event.

The 'Sold' list included 1 x XE19U Mini Excavator, 3 x XG0807ACW Scissor Lifts, 1 x XG1008AC Scissor Lift, 1 x XG1012AC Scissor Lift, and 1 x GR1003 Grader.

Whilst the mini excavators and scissor lifts received a lot of attention, the XCMG GR1003 10' mouldboard grader proved to be a star attraction. XCMG graders differ to most other brands of grader in the strength and construction of the turntable. Show goers were able to view the individual components for themselves.

In recent years, the PTE has broadened its focus of tool and machinery sales to include a whole section dedicated to recruitment. Western Australia has a very strong mining and construction sector which requires skilled tradespeople across a broad range of expertise.

Brooks took advantage of the strong flow of job seekers to advertise for HD Mechanics, Boilermakers, Auto Electricians, and High Voltage Electricians. We have some great FIFO and DIDO opportunities based out of Perth. If you're a qualified tradesperson, looking for work in Western Australia, we encourage you to scan the QR code and lodge an application.



"Better being with Brooks"



CCF WA South West Golf Day



Civil Contractors Federation WA (CCF WA) held their inaugural South West Golf Day in April 2025. 80 Players ventured 170km south of Perth to the Bunbury Golf Club for the event. Aaron Dent and Katelyn Gibson from Brooks invited clients, Cameron Lance and Dylan Wilson from Open Cut Mining as their guests. A great time was had by all.

Sydney Build Expo



Sydney Build Expo was held on the 7th and 8th May at the International Convention Centre, Sydney. The event is Sydney's largest construction and design show with over 25,000 attendees. Brooks was invited to exhibit at the event. Joel Baldoria, Francisco Lagos and Georgia Vallido from Brooks Sydney branch pulled together to create the Brooks expo stand.



HRIA Trade Night

The Hire & Rental Industry Association (HRIA) and Elevated Work Platform Association (EWPA) held their combined Trade Night on 9th April, 2025. Held annually, the Trade Night provides a great opportunity for businesses in the hire industry to network with industry colleagues. Nathan Fenemer, Jacinta O'Brien, and Katie Usher attended on behalf of Brooks Equipment Sales, taking along an XCMG XG0807 scissor lift for sale.



CCF WA Training & Industry Awards

Katie Usher and Linda Smith attended the CCF WA Training & Industry Awards on the 2nd May at the Crown Ballrooms, Perth. The awards celebrate individual and corporate achievement. Brooks Hire Service was nominated for the Supplier of the Year Award, while Director of Marketing, Linda Smith was nominated for the Communications & Engagement Professional of the Year Award.



CCF WA State Budget Breakfast

Jacinta O'Brien and Katelyn Gibson mingled with experts from government and industry at the CCF WA Infrastructure Breakfast, held on Thursday, 26th June. Budget discussions surrounding key projects, programs in the pipeline, and the challenges and opportunities ahead were the key topics of conversation.

APGA Brisbane Golf Day



The Australian Pipeline & Gas Association (APGA) Brisbane Golf Day was attended by Brooks Senior Hire Coordinator, Madison James. Held on the 9th May at the stunning Nudgee Golf Club, this annual event offers a day of networking, friendly competition and fresh air. On the evening previous, Madison attended the APGA Brisbane Dinner where distinguished guest, Dan Clark, CEO of Australia Pacific LNG, shared his expertise and perspectives on key industry topics.

CCF NSW Earth Awards



The CCF Earth Awards are the most prestigious awards in civil infrastructure, recognising excellence in civil construction. CCF NSW held their awards night on Friday, 20th June. Representing Brooks, an annual sponsor of the awards, was Francisco Lagos and Georgia Vallido. Francisco announced the winner of the Project Value \$2m - \$5m section: Brefni Pty Ltd. Winners from each state will be entered in the National awards.

Business News Indigenous Lunch



Indigenous businesses in WA have grown to new heights over the previous decade, expanding into a wide range of industries and achieving immeasurable success. Jacinta O'Brien attended Business News' Indigenous Business Lunch on behalf of Brooks OBR MAIA, held on Wednesday, 25th June 2025.



CCIWA Construction Industry Dinner

Jacinta O'Brien from Brooks Access attended CCI WA's Construction Industry Dinner, held on Thursday, 19th June. Celebrating the ongoing success of WA's construction industry and the vital sectors it supports, it's a high-value networking opportunity.

APGA Adelaide Dinner

Michael Konecny from Brooks Equipment rubbed shoulders with The Hon. Tom Koutsantonis MP, SA's Minister for Infrastructure and Transport at the Australian Pipeline and Gas Association (APGA) Adelaide Dinner. Held on Thursday 26th June, it is an excellent opportunity to connect with industry professionals.



IQA Sundowner



Kai Li from Brooks Equipment was at the IQA WA Branch Sundowner in June. The event included an insightful guest presentation, comedy show and networking with industry peers.

WA Mining Club Lunch

Mikayla Moulton and James Delcore from Brooks Mining attended the WA Mining Club's June Luncheon held at Optus Stadium on Wednesday, 25th June. Guest speaker, Amanda Lacaze, CEO of Lynas Corporation, gave an insightful view on rare earth extraction, production, and international supply chains. It was a fascinating presentation and an excellent networking experience.



Brooks Rumble Bees



In the late night hours of Friday, 4th April, a dedicated team of Brooks ladies were punching it out in the gym to raise money for a good cause. Lenore Brooks, Josie Jenkins, Marnee Sims, Stephanie Smith, Katelyn Gibson, and Katie Usher - aka 'Brooks Rumble Bees', participated in "Punching for a Cure". This fundraising event, organised by Perth Childrens Hospital, raises vital funds for childhood cancer research. The collective goal was to achieve one million punches within a 24-hour period. Brooks Rumble Bees raised and impressive \$2,728 in donations. Top effort ladies!



Happy Days, John!



Long time staff member, John Harrison has recently retired after dedicating 9 years of his working life to Brooks Hire. John, who was employed as a Truck Driver, is now planning the next stage of his life, travelling with his wife and relaxing.

Thank you for your hard work and dedication over the years, John. It's been great having you on board. All the best for the future.



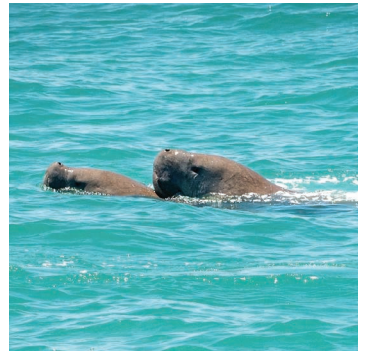
Top End Travelling

Brooks Access Account Manager, Jacinta O'Brien has been on the road, travelling up to Darwin in May for two events. Brooks is a Gold Sponsor of the Noonamah Tavern Rodeo. Jacinta invited clients, Lowell and Michelle Lewis from Kimberley Airport to attend the event with exclusive access to the VIP Area. While in Darwin, Jacinta also attended the APGA Darwin Dinner held at Hilton Darwin. Of course, a trip to the Top End wouldn't be complete without calling into the Darwin branch to visit the team, Rodnie, Sean, and Jerolyn.



Shark Bay Seagrass Restoration Project

The heroic team from Perfect Nature Cruises (Aristocat 2) has been working on seagrass restoration in Shark Bay for several years now. In 2025, they plan to restore 6 hectares of decimated seagrass meadows to supply food for the dugong population. The project involves several steps including collecting seedlings, making the hessian bags, filling them with sand and seedlings, then delivering them to the bay floor. The entire process is funded by volunteers and sponsors. Brooks Hire has sponsored this project for the last two years by donation of machinery. Other businesses that donate their goods and services include Red Dust Holdings and Blackwoods. Perfect Nature Cruises has launched a 'Buy a Bag' initiative to raise funds to continue the work. If you can help, please scan the QR code and make a donation for the dugongs.



Domestic Violence Month

Each May, Queensland marks Domestic and Family Violence Prevention Month to raise community awareness of domestic and family violence (DFV) and to send a clear message that DFV in families and homes will not be tolerated. The Brooks Dalby branch turned purple to raise community awareness for the cause.



Albany Speedway



Albany Speedway roared into life over the Easter long weekend with the Wingless Sprintcars State Title and the ever popular Easter Showdown for Late Models and Super Sedans.

Of course, Brooks Access was amongst the action with a Manitou Telehandler on site. There were plenty of opportunities for the Telehandler to get busy, lifting vehicles out of gnarly rollovers. If you're in Albany, and you like some fast paced action, make sure you get down to Albany Speedway.

Welcome Aboard

Amber Hsieh

What was your first job:

Camp Educator.

What is your role at Brooks:

Asset Administrator, Welshpool WA.

What did you want to be when you were growing up: Teacher.

What achievement in life are you most proud of:

Being a mum of 2 without family around in Australia.

How would you describe yourself in 3 words:

Caring, responsible, quiet.

Where would we find you on the weekends:

Home, at the park, or at a friends' home.

What is something that you're really good at: Food tasting.

What is something that you're really bad at:

Talking in a big group.

If you could invite anybody to dinner (dead or alive), who would it be: A Youtube group called "LadyFlavor".

Favourite cake: Traditional Taiwanese Sponge Cake.

Favourite song: Depends on the mood.

Favourite holiday destination: Japan.



Fahria Rexhepi

What is your role at Brooks:

Flight Operations Administrator,
Brooks Airways.

What did you want to be when you were growing up:

A ballet dancer or writer.

What achievement in life are you most proud of:

Becoming a commercial GA pilot!

How would you describe yourself in 3 words:

Diligent, fun, resilient.

Where would we find you on the weekends:

On a bush walk or reading.

What is something that you're really good at:

Having a yarn (or yap!).

What is something that you're really bad at: Cooking rice.

If you could invite anybody to dinner (dead or alive), who would it be: Vali Myers, Elspeth Beard, David Whyte, and Bob Hoover!

Favourite cake: Cheesecake is the only cake.

Favourite holiday destination:

Anywhere cold with a big hill I can climb.



Hein Von Benecke



What was your first job:

POD scanning at night for Toll Express.

What is your role at Brooks:

Hire Coordinator, Site Services, Kewdale WA.

What did you want to be when you grew up: Architect.

What achievement in life are you most proud of: Buying my first home in 2022.

How would you describe yourself in 3 words: Friendly, bubbly, and sassy.

Where would we find you on the weekends:

At home cleaning up after my 3 dogs.

What is something that you're really good at: Drawing.

What is something that you're really bad at: Sports.

If you could invite anybody to dinner (dead or alive), who would it be: My brother, he passed away before we immigrated to Australia.

Favourite Cake: Strawberry Chocolate Torte.

Favourite Song: "Strangers" by Sigrid.

Favourite holiday destination: Melbourne.

Kaitlyn Moore

What was your first job:

Coles checkout operator.

What is your role at Brooks:

Hire Administrator, Brooks Access, Canning Vale, WA.

What did you want to be when you grew up: Pilot.

What achievement in life are you most proud of: Representing WA for athletics.

How would you describe yourself in 3 words:

Outgoing, enthusiastic, and honest.

Where would we find you on the weekends:

Watching the footy or spending time with my friends.

What is something that you're really good at:

Finding a good spot for a cocktail.

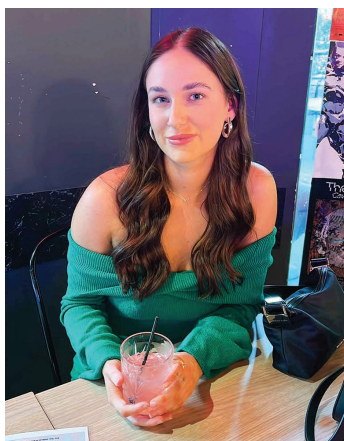
What is something that you're really bad at: Tennis.

If you could invite anybody to dinner (dead or alive), who would it be: Both of my Nans.

Favourite Cake: Biscoff sponge cake.

Favourite Song: "Ocean" by Fisher.

Favourite holiday destination: Singapore.



Justin Bishop

What was your first job:

Paperboy and junk mail delivery.

What is your role at Brooks:

Technical Hire Coordinator, Brooks Mining, Kewdale WA.

What did you want to be when you grew up:

An aircraft mechanic.

What achievement in life are you most proud of:

Buying a house for my parents.

How would you describe yourself in 3 words:

Motivated, determined, dependable.

Where would we find you on the weekends: At home.

What is something that you're really good at: Setting goals.

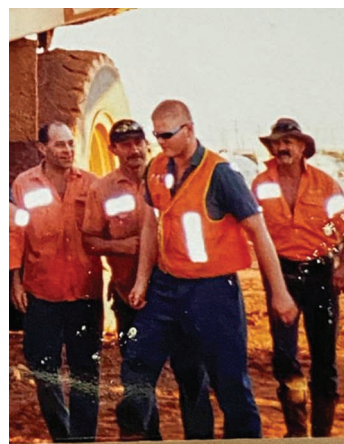
What is something that you're really bad at: Giving up.

If you could invite anybody to dinner (dead or alive), who would it be: My Grandfather.

Favourite Cake: Chocolate Mudcake.

Favourite Song: "A View to Kill" by Duran Duran.

Favourite holiday destination: The Eagles Nest.



Macayla Nelson



What was your first job:

I worked admin in a hair salon in Adelaide.

What is your role at Brooks:

Administration Assistant, Karratha, WA.

What did you want to be when you grew up: Nurse or professional AFL player.

What achievement in life are you most proud of: I am a proud mum of my little girl. I got into university for nursing. I became an EMT with St John Ambulance.

Where would we find you on the weekends: Outdoors adventuring or playing my Playstation.

What is something that you're really good at:

Asking dumb questions.

What is something that you're really bad at:

Remembering what you said to me.

If you could invite anybody to dinner (dead or alive), who would it be: David Attenborough.

Favourite Cake:

Chocolate mudcake topped with cream.

Favourite song:

"Uptown Girl" by Billy Joel.

Favourite holiday destination: Anywhere that I can swim and drink cocktails.

Rachel Van Herpt

What was your first job:

Working in a deli.

What is your role at Brooks:

Administration Assistant,
Brooks Transport, Canning Vale
WA.

What did you want to be when you grew up:

A nurse.

What achievement in life are you most proud of:

Running my own business.

How would you describe yourself in 3 words:

Sincere, bubbly, and friendly.

Where would we find you on the weekends:

Having lunch at a pub somewhere.

What is something that you're really good at:

Crosswords! I love the cryptic ones.

What is something that you're really bad at:

Sleeping in.

If you could invite anybody to dinner (dead or alive), who would it be:

Melissa Etheridge.

Favourite Cake:

Carrot Cake.

Favourite Song:

"Jagged Little Pill" by Alanis Morissette.

Favourite holiday destination:

Esperance.



Kwan Teik Khow

What was your first job:

Depot hand.

What is your role at Brooks:

Parts Interpreter, Brooks Parts,
Cannington WA.

What did you want to be when you grew up:

Astronomer.

What achievement in life are you most proud of:

Managed to finish a Trivia Quiz before they
finished handing out all the papers (it was a short quiz ;p).

How would you describe yourself in 3 words:

Laid back, organised, creative.

Where would we find you on the weekends:

Probably in front of my computer at home!

What is something that you're really good at:

Casual tech support (happens surprisingly often).

What is something that you're really bad at:

Drawing.

If you could invite anybody to dinner (dead or alive), who would it be:

Carl Sagan.

Favourite Cake:

Chocolate Cheesecake (Mom's recipe).

Favourite Song:

"Mr Blue Sky" by Electric Light Orchestra.

Favourite holiday destination:

Home! Either here in Perth or
back in Malaysia.



Ellie's Kitchen

Choc Chunk Muffins

Our Flight Coordinator, Ellesia Walters is making warm, chunky, chocolatey muffins. Stop talking and get in my belly!



INGREDIENTS

2 x Cups Self Raising Flour
1/4 Tsp Salt
3/4 Cup Caster Sugar
2 Eggs
1 Tbsp Vanilla Extract
1/2 Cup Greek Yoghurt or Sour Cream
1/2 Cup Milk
1 Cup Choc Chips or Chunks

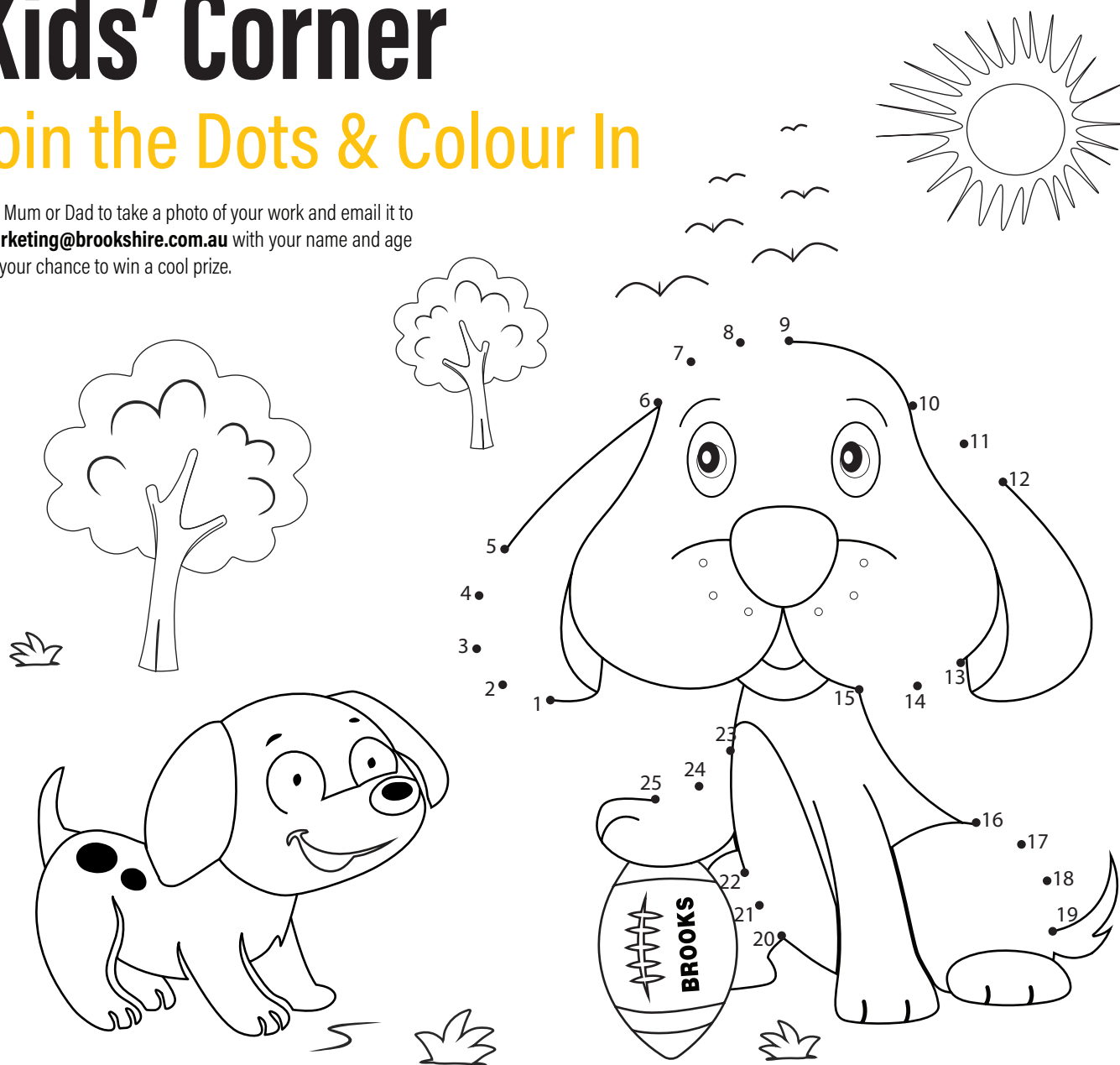
METHOD

1. Pre heat oven to 180°C and line muffin tray with muffin liners or spray.
2. Whisk all dry ingredients together in a large mixing bowl.
3. Mix all wet ingredients together in a small bowl or jug.
4. Pour wet mixture into dry, and slowly fold together until just combined - don't overmix!
5. Leave the batter to rest for 15 minutes covered - this makes them rise taller in the oven.
6. Scoop the batter into your muffin liners or tray.
7. Bang those babies in the oven and cook for 20ish minutes or until you poke them with a knife or toothpick and it comes out clean.
8. Transfer to a wire rack to cool slightly - then enjoy!

Kids' Corner

Join the Dots & Colour In

Get Mum or Dad to take a photo of your work and email it to marketing@brookshire.com.au with your name and age for your chance to win a cool prize.



Tigger Rodrigues - Age 6



Isla Emerson - Age 7



Summer Emerson - Age 5



Zachary Emerson - Age 2



Lily Sujdovic - Age 2



Violet Sujdovic - Age 9



Olive Sujdovic - Age 6

**Congratulations to all the winners from our last edition.
You will all be receiving a prize in the post.**

The Puzzler Page



Spot the Difference

There are 10 differences between the photos below. See if you can find them all.



Word Solver

Find the 9 letter word using the letters in the grid, then try to make as many other words as you can. Words must be a minimum of 4 letters and must contain the middle letter. No proper nouns or plurals.

Good - 15 Words

Very Good - 20 Words

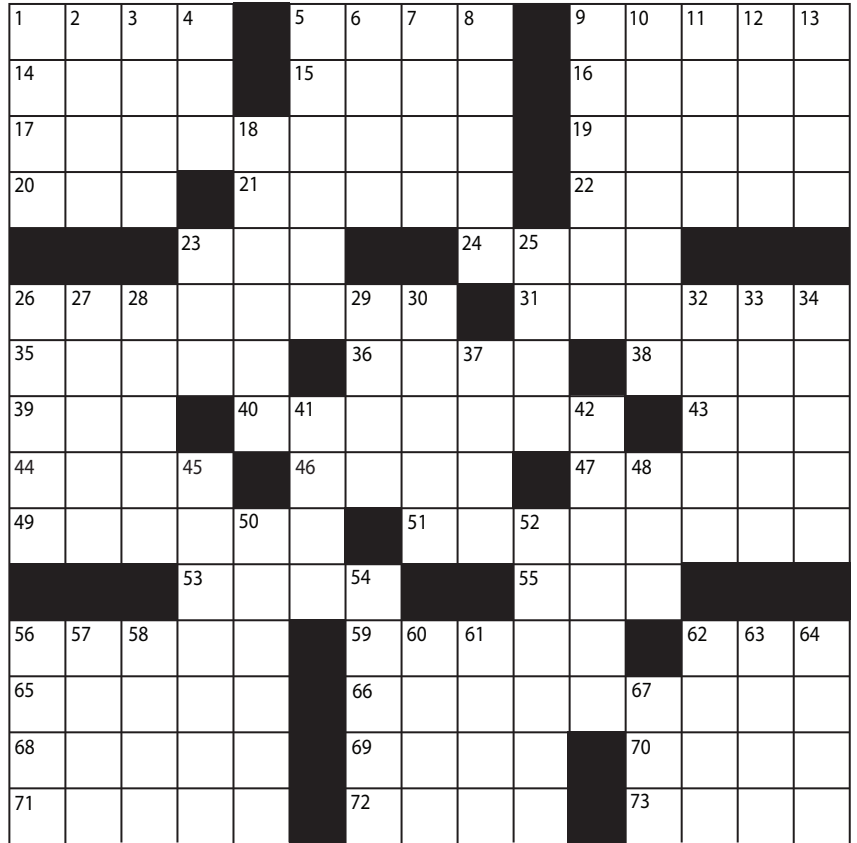
Excellent - 25 or more

L	G	V
I	O	T
E	N	Y

Crossword

Across

1. Drooping
5. Weapons
9. Lucifer
14. Aroma
15. Passion
16. Inclined
17. Permissible
19. Repent
20. Formerly named
21. Make jubilant
22. Angered
23. Ascot
24. Mistletoe payoff
26. Scenic view
31. Halts
35. Fix
36. Capri or Man
38. Alaskan city
39. Milk provider
40. Not indoors
43. Pronto!
44. Birch or spruce
46. Observed
47. Writing tablet
49. Peaceful
51. Wobbled
53. Curtain holders
55. Opposite of pos.
56. Car accessory
59. Alert
62. Vane dir.
65. Zodiac ram
66. Weather instrument
68. Pester
69. Morally wrong
70. Monopoly, e.g.
71. Epsom _____
72. Not fake
73. Beam



Down

1. Mortgage
2. Not busy
3. Burrowing animal
4. _____ and con
5. Flowering shrub
6. Songstress _____ McEntire
7. Beer grain
8. Streamlined
9. Thinly scattered
10. Silversmith, e.g.
11. Handyman's need
12. Novelist _____ Rice
13. Necessity
18. Strange fellow (sl.)
23. Freight weight
25. Cooled
26. Treaties
27. Love, in Rome
28. More modern
29. Tiny insect
30. Desirable quality
32. Sub finder
33. Ham it up
34. Embroidered
37. Draw the _____
41. Not new
42. Regard highly
45. Spookiest
48. Journey part
50. Rope loops
52. Register
54. Cavalry sword
56. Darn it!
57. Space
58. Watch face
60. Hand gesture
61. Diva's solo
62. Night twinkler
63. Large truck
64. Small bird
67. Quiche ingredient

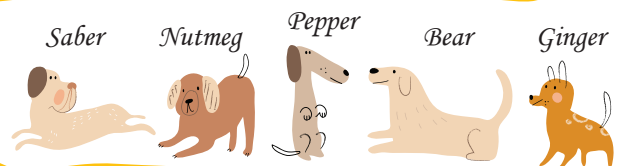
Sudoku

Enter numbers into the blank spaces so that each row, column and 3x3 box contains the numbers 1 to 9 without repeats.

	7	8					5	1
6		4		5	7	3		
					6		8	7
		6			2	5		
		9				8		
			1	6	8			2
	3	1		4		2		
4		2	3			7		
7	8			2				4



Brain Teasers



Each of five neighborhood dogs (Saber, Ginger, Nutmeg, Pepper, and Bear) is enjoying one of the following activities: getting its ears scratched, playing catch, taking a nap, burying a chew toy, and going for a walk.

Pepper is either playing catch or burying a chew toy.

Neither Ginger nor Saber nor Bear is on a walk.

One of the dogs named after a spice is getting its ears scratched.

A dog not named for a spice is playing catch.

Bear is getting some exercise.

Can you figure out what each pooch is doing?

WINNER

Hayden Holdaway



Snap That

STAFF PHOTOGRAPHY COMPETITION



Blake Hedley



Manuel Alcalde



Hayden Rance



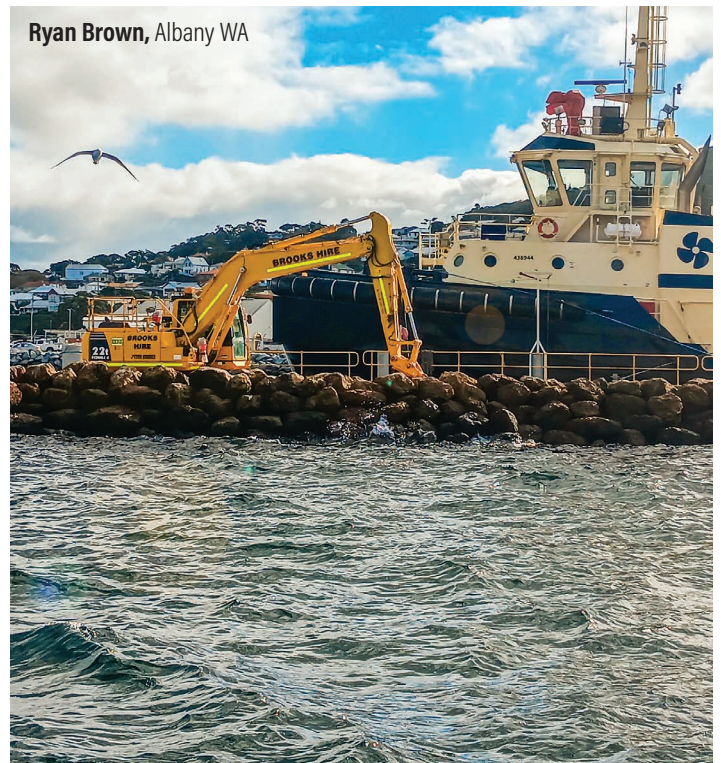
Donna Dyer



Indiah Hayes



Ryan Brown, Albany WA



Ryan Delager



Matthew Gray



The Tech Report

CRUSHER BUCKET ATTACHMENTS



Italdem GF-45 Crusher Bucket Specs.	
Weight	4500 kg
Height	1343 mm
Width	1174 mm
Length	2715 mm
Feeder dimensions	900x700 mm
Output size	30-150 mm
SAE volume	1 m ³
Carrier weight	28-40 t
Inner diameter HP hose	20 mm
Inner diameter LP hose	30 mm
HP thread	1" gas
LP thread	1" gas
Oil flow	150-160 l/min
Working pressure	180-200 bar

Crusher bucket attachments are designed to transform an excavator into a mobile crushing machine. These buckets are mounted directly onto the arm of an excavator and used to crush and recycle a variety of materials, including concrete, brick, asphalt, and natural stone. Their versatility and efficiency have made them popular across construction, demolition, quarrying, and mining industries.

At the core, a crusher bucket operates by using powerful hydraulic systems to compress and crush materials between two jaws—one fixed and one moving. As the excavator's boom positions the bucket over a pile of rubble or debris, the bucket breaks it down into smaller, reusable pieces. This on-site crushing capability offers several advantages, especially in jobs where space is limited or transport of materials is costly.

One of the biggest benefits of crusher buckets is cost-efficiency. By crushing materials on-site, contractors can reduce the need to purchase new aggregate or transport waste to external recycling facilities. This not only cuts disposal fees but also lowers fuel costs and reduces project timelines. The material crushed can often be reused immediately as backfill, road base, or construction fill, eliminating delays and reducing environmental impact.



Italdem GF-45 Crusher Bucket

The GF-45 crusher bucket is a jaw crusher which can be mounted on excavators from 28 to 40 tonnes, being connected to the hydraulic hammer line. An eccentric shaft is moved by a flywheel which is connected by several belts to a pulley of the hydraulic motor. The eccentric shaft moves the mobile jaw. Rocks with hardness up to 500 kg/cm² and with a maximum size of 700 x 500 mm can be crushed to size varying from approximately 30 to 150mm.

Brooks Hire has Italdem GF-45 Crusher Buckets available for hire anywhere in WA.

Visit the QR code, call 1300 276 657

or email sales@brookshire.com.au



Telehandlers



BRAND	MODEL	MAX LIFT WEIGHT	MAX LIFT HEIGHT	WEIGHT	DIMENSIONS (L x W x H)
JCB	532-60	3 tonnes	6.22 m	752 tonnes	4.69 x 2.28 x 2.49 m
JCB	531-70	3.1 tonnes	7 m	6.9 tonnes	4.99 x 2.23 x 2.49 m
Manitou	MT-X732	3.2 tonnes	6.9 m	758 tonnes	4.76 x 2.34 x 2.3 m
Merlo	TF35.7-115	3.5 tonnes	6.6 m	6.7 tonnes	4.315 x 2.24 x 2.24 m
Manitou	MT-X1840	4 tonnes	13.53 m	11.6 tonnes	6.16 x 2.42 x 2.45 m
Merlo	TF42.7-100	4.05 tonnes	7 m	8 tonnes	4.73 x 2.31 x 2.53 m
JCB	541-70	4.1 tonnes	7 m	78 tonnes	4.99 x 2.23 x 2.49 m
Merlo	P60.10EE	6 tonnes	9.55 m	10.2 tonnes	5.34 x 2.24 x 2.44 m
Dieci	Samson70.10	7 tonnes	9.5 m	12.1 tonnes	5.91 x 2.38 x 2.49 m
Merlo	P72.10EE	7.2 tonnes	9.2 m	11.3 tonnes	5.48 x 2.24 x 2.5 m

Telescopic Boom Lifts



BRAND	MODEL	WORKING HEIGHT	REACH	LOAD CAPACITY	DIMENSIONS (L x W x H)
-------	-------	----------------	-------	---------------	------------------------

Genie	S-45XC	15.5 m	11.02 m	300 kg	9.47 x 2.49 x 2.51 m
Genie	S-65XC	21.8 m	16.5 m	300 kg	9.7 x 2.49 x 2.81 m
XCMG	XGS22K	22 m	17.2 m	300 kg	9.85 x 2.49 x 2.53 m
Genie	S-85XC	27.9 m	22.7 m	300 kg	12.37 x 2.49 x 2.8 m
XCMG	XGS40K	40.2 m	24.9 m	300 kg	12.5 x 2.49 x 3 m
Genie	SX-135 XC	43.15 m	27.4 m	300 kg	19.7 x 3.94 x 3.05 m
XCMG	XGS58K	58.6 m	24.4 m	230 kg	14.6 x 2.49 x 3.07 m

Tipper Trucks



BRAND	MODEL	WHEELS	TIPPER VOLUME	POWER
-------	-------	--------	---------------	-------

Isuzu	FXZ 240-350	6	11,300 m³	257 kW @ 2000 rpm
Hino	FM2628	6	11,000 m³	206 kW @ 2500 rpm
Isuzu	FVZ 260-300	6	11,000 m³	221 kW @ 2400 rpm
Isuzu	FYJ 300-350	8	14,000 m³	257 kW @ 2000 rpm

Tool Carriers



BRAND	MODEL	BUCKET	POWER	WEIGHT	DIMENSIONS (L x W x H)
-------	-------	--------	-------	--------	------------------------

XCMG	XC938	2.1 m³	99 kW @ 2200 rpm	11 t	7.7 x 2.48 x 3.04 m
Komatsu	WA250	2.2 m³	104 kW @ 2000 rpm	12.3 t	7.38 x 2.47 x 3.2 m
Hitachi	ZW180	2.8 m³	129 kW @ 1500 rpm	14.98 t	7.96 x 2.53 x 3.28 m
Komatsu	WA320	2.7 m³	123 kW @ 2100 rpm	15.5 t	7.69 x 2.74 x 3.2 m
XCMG	XC948	2.1 m³	142 kW @ 2200 rpm	16.5 t	7.88 x 2.54 x 3.64 m
Volvo	L110F	2.8 m³	169 kW @ 1700 rpm	18.1 t	8 x 2.67 x 3.36 m
Volvo	L150H	3.1 m³	220 kW @ 1300 rpm	25.6 t	9.68 x 3.1 x 3.58 m
Volvo	L180F	4.6 m³	234 kW @ 1400 rpm	26.6 t	9.03 x 2.95 x 3.58 m
Volvo	L220H	5.2 m³	279 kW @ 1400 rpm	32.8 t	8.79 x 3.15 x 3.73 m

Tractors



BRAND	MODEL	LIFT CAPACITY	POWER	WEIGHT	DIMENSIONS (L x W x H)
Kubota	M7040	1,055 kg	46.3kW@2600rpm	2.43 t	3.44 x 1.86 x 2.46 m
MF	8S-205	10,000 kg	165kW@1650 rpm	8.7 t	5.37 x 3 x 3.39 m

Traffic Lights & Signage



TYPE	POWER SUPPLY	SOLAR INPUT	WEIGHT	DIMENSIONS (L x W x H)
Traffic Lights	12 Volts	165 W	300 kg each	2.08 x 1.22 x 3.06 m
Variable Message	12 Volts	350 W	740 kg	2.83 x 1.76 x 3.6 m

Trailer Mounted Boom Lifts



BRAND	MODEL	WORKING HEIGHT	REACH	LOAD CAPACITY	DIMENSIONS (L x W x H)
Snorkel	MHP13/35	12.6 m	5.6 m	227 kg	5.99 x 1.58 x 2.05 m
Genie	TZ-34/20	12.36 m	5.59 m	227 kg	5.5 x 1.45 x 1.94 m
Snorkel	MHP13AT	12.9 m	6.4 m	215 kg	4.9 x 1.6 x 2.0 m
Genie	TZ-50	16.92 m	8.89 m	227 kg	7.16 x 1.68 x 2.08 m

Vehicles



BRAND	MODEL	BODY	SEATS	DRIVE TYPE	LICENCE
-------	-------	------	-------	------------	---------

Toyota	Landcruiser	Steel Tray Ute	3	4 x 4	C Class
Isuzu	D-Max	Steel Tray Ute	5	4 x 4	C Class
Mitsubishi	Triton	Steel Tray Ute	5	4 x 4	C Class
Toyota	Hilux	Steel Tray Ute	5	4 x 4	Class
Toyota	Hilux	Well Body Ute	5	4 x 4	C Class
Isuzu	D-Max	Well Body Ute	5	4 x 4	C Class
Toyota	Prado	SUV	5	4 x 4	C Class
Toyota	HiAce	LWB Van	12	4 x 4	C Class
Toyota	Coaster	Bus	22	4 x 2	LR Class

Water Storage Tanks



CAPACITY	MATERIAL	FRAME	TYPE	DIMENSIONS (L x W x H)
4,500 L	LMDFE-HDPE	Reinforced	All water types	1.8 x 1.8 x 2 m
30,000 L		Skid Mounted	All water types	6.05 x 2.43 x 2.89 m

Water Trucks



VOLUME	BRAND	MODEL	BODY	DIMENSIONS (L x W x H)
--------	-------	-------	------	------------------------

10,000 L	Hydrema	912ES	Articulated	6.76 x 2.49 x 3.06 m
14,000 L	Isuzu	FVZ 260-300	Rigid	7.6 x 2.44 x 3.2 m
14,000 L	Hino	500	Rigid	9.3 x 2.49 x 3.2 m
15,000 L	Isuzu	FVZ 260-300	Rigid	7.6 x 2.44 x 3.2 m
15,000 L	Hino	500	Rigid	9.3 x 2.44 x 3.2 m
15,000 L	Mercedes	Axor	Rigid	7.7 x 2.48 x 3.2 m
16,000 L	JCB	Fastrac 185/65	Articulated	
20,000 L	Isuzu	FYH 300-350	Rigid	6.01 x 2.01 x 3.2 m
20,000 L	Iveco	AD450 6x6	Rigid	8.2 x 3.2 x 3.5 m
26,000 L	Komatsu	HM300	Articulated	10.5 x 3.5 x 3 m
33,000 L	Komatsu	HM400	Articulated	11.1 x 3.45 x 3.75 m
35,000 L	Komatsu	HM400	Articulated	11.1 x 3.45 x 3.75 m

BRAND	MODEL	TYPE	BUCKET	RATED LOAD	WEIGHT	DIMENSIONS (L x W x H)
-------	-------	------	--------	------------	--------	------------------------

Caterpillar	226B3	Tracked	0.36 m³	680 kg	2.64 t	3.23 x 1.52 x 1.95 m
Caterpillar	226D3	Wheeled	0.36 m³	680 kg	2.58 t	3.23 x 1.52 x 1.92 m
Caterpillar	246C	Wheeled	0.36 m³	680 kg	2.64 t	3.23 x 1.52 x 1.95 m
Caterpillar	242D3	Wheeled	0.36 m³	975 kg	3.17 t	3.49 x 1.68 x 2.11 m
XCMG	XCT-SSR07	Wheeled	0.4 m³	890 kg	2.95 t	3.41 x 1.8 x 1.96 m
Caterpillar	239D	Tracked	0.4 m³	930 kg	3.306 t	3.23 x 1.67 x 2.03 m
XCMG	XCT-SR08	Wheeled	0.4 m³	955 kg	3.2 t	3.41 x 1.8 x 1.96 m
Caterpillar	249D	Tracked	0.4 m³	1044 kg	3.49 t	3.23 x 1.68 x 2.04 m
Caterpillar	259D3	Tracked	0.4 m³	1315 kg	4.05 t	3.486 x 1.75 x 2.11 m
Caterpillar	279D	Tracked	0.48 m³	1331 kg	4.49 t	3.71 x 1.98 x 2.11 m
XCMG	XCT-SR10	Wheeled	0.6 m³	1100 kg	3.55 t	3.76 x 2 x 2.04 m
XCMG	XCT-TV10	Tracked	0.6 m³	1100 kg	4.75 t	3.85 x 2 x 2.08 m
XCMG	XCT-SR12	Wheeled	0.6 m³	1260 kg	3.68 t	3.76 x 2 x 2.04 m
XCMG	XCT-TV12	Tracked	0.6 m³	1360 kg	5.15 t	3.78 x 2 x 2.1 m



Skid Steer Loaders

Genie	GS1432	Electric	6.3 m	227 kg	2 x 0.77 x 1.88 m	DIMENSIONS (L x W x H)
Haulotte	Optimum 8	Electric	7.7 m	230 kg	1.72 x 0.79 x 1.98 m	
Genie	GS1932	Electric	7.7 m	227 kg	1.83 x 0.81 x 2 m	
Snorkel	S3219E	Electric	7.7 m	250 kg	1.78 x 0.81 x 2.11 m	
XCMG	XG0807ACW	Electric	78 m	230 kg	1.9 x 0.81 x 2.01 m	
JLG	R1932	Electric	78 m	230 kg	1.74 x 0.82 x 2 m	
JLG	R12669	Rough Terrain	798 m	680 kg	3.53 x 1.76 x 1.89 m	
Snorkel	S2258RT	Rough Terrain	8.5 m	420 kg	3.3 x 1.45 x 2.5 m	
JLG	ES2632	Electric	9.6 m	230 kg	3.27 x 0.81 x 2.2 m	
Genie	GS26699RT	Rough Terrain	9.7 m	680 kg	3.12 x 1.75 x 1.92 m	
Genie	GS2632	Electric	9.8 m	227 kg	2.44 x 0.81 x 2.3 m	
XCMG	XG1008AC	Electric	10 m	230 kg	2.47 x 0.81 x 2.33 m	
XCMG	XG1012AC	Electric	10 m	450 kg	2.47 x 1.17 x 2.35 m	
JLG	RT3369	Rough Terrain	10 m	454 kg	4.6 x 1.76 x 2.62 m	
Genie	GS33699RT	Rough Terrain	11.9 m	454 kg	4.5 x 1.6 x 2.59 m	
JLG	R3246	Rough Terrain	11.8 m	320 kg	3.46 x 0.81 x 2.2 m	
XCMG	XG12188RT	Rough Terrain	12 m	455 kg	3.83 x 1.76 x 2.58 m	
Snorkel	3370RT	Rough Terrain	12 m	450 kg	3.4 x 1.8 x 2.7 m	
Haulotte	CompactIDX	Rough Terrain	12.06 m	450 kg	3.17 x 1.78 x 2.56 m	
JLG	RT4069	Rough Terrain	14.02 m	362 kg	4.6 x 1.6 x 2.62 m	
Genie	GS40699RT	Rough Terrain	14.12 m	363 kg	4.5 x 1.75 x 2.74 m	
Genie	GS43909RT	Rough Terrain	14.75 m	680 kg	3.94 x 2.36 x 1.8 m	
XCMG	XG1523RT	Rough Terrain	15 m	680 kg	4.86 x 2.28 x 2.95 m	
Genie	GS4655E	Electric	15.95 m	350 kg	3.11 x 1.41 x 2.77 m	
JLG	ERT4769	Electric RT	16.3 m	363 kg	3.3 x 1.76 x 2.77 m	
Genie	GS53909RT	Rough Terrain	17.95 m	680 kg	4.88 x 2.29 x 3.15 m	
XCMG	XG1823RT	Rough Terrain	18.1 m	680 kg	4.86 x 2.28 x 3.17 m	
LG	RT5394	Rough Terrain	18.15 m	680 kg	5.18 x 2.31 x 3.07 m	



Scissor Lifts

BRAND	MODEL	PAYLOAD	WEIGHT	SPEED	DIMENSIONS (L x W x H)
XCMG	XDE130	120 Tonnes	205 Tonnes	50 km/h	12 x 6.79 x 6.42 m
XCMG	XDE200	180 Tonnes	320 Tonnes	56.3 km/h	13.8 x 7.3 x 6.85 m
XCMG	XDE240	230 Tonnes	395 Tonnes	64 km/h	14.78 x 9.11 x 7.44 m
XCMG	XDE260	220 Tonnes	404 Tonnes	64 km/h	14.59 x 9.1 x 6.35 m
XCMG	XDE320	300 Tonnes	510 Tonnes	64.5 km/h	15.07 x 9.25 x 6.84 m



Rigid Dump Trucks

BRAND	MODEL	PAYLOAD	WEIGHT	SPEED	DIMENSIONS (L x W x H)
XCMG	XDE130	120 Tonnes	205 Tonnes	50 km/h	12 x 6.79 x 6.42 m
XCMG	XDE200	180 Tonnes	320 Tonnes	56.3 km/h	13.8 x 7.3 x 6.85 m
XCMG	XDE240	230 Tonnes	395 Tonnes	64 km/h	14.78 x 9.11 x 7.44 m
XCMG	XDE260	220 Tonnes	404 Tonnes	64 km/h	14.59 x 9.1 x 6.35 m
XCMG	XDE320	300 Tonnes	510 Tonnes	64.5 km/h	15.07 x 9.25 x 6.84 m

BRAND	MODEL	CAMERAS	MAST HEIGHT	RECORD TIME
Globe Power	SolarEye	2 x 4MP, 200° view, 50m night vision.	4.5 m	28 Days continuous



Solar CCTV Towers

BRAND	MODEL	WEIGHT	ROLLER WIDTH	VIBE FORCE	DIMENSIONS (L x W x H)
Bomag	BW177D	72 tonnes	1.68 m	135/120 kN	4.91 x 1.83 x 2.86 m
XCMG	XS83	8 tonnes	1.68 m	125/85 kN	5.35 x 1.68 x 3.04 m
XCMG	XS123	12 tonnes	2.13 m	190/280 kN	5.94 x 2.3 x 3.15 m
Caterpillar	CS64B	12.05 tonnes	2.13 m	234 kN	5.85 x 2.3 x 3.11 m
Hamm	3412HT	12.2 tonnes	2.14 m	256 kN	5.7 x 2.25 x 2.95 m
Dynapac	CA252D	13.6 tonnes	2.13 m	246 kN	5.55 x 2.32 x 2.97 m
Caterpillar	CS68	14.3 tonnes	2.13 m	301/141 kN	6.05 x 2.33 x 3.11 m
Bomag	3516	15.7 tonnes	2.14 m	256/215 kN	6.07 x 2.27 x 2.95 m
XCMG	XS165	16 tonnes	2.13 m	340/236 kN	6.02 x 2.13 x 3.04 m
Bomag	216D	16.1 tonnes	2.13 m	275/202 kN	5.93 x 2.3 x 2.98 m
Caterpillar	CP76B	17.6 tonnes	2.13 m	332 kN	6.05 x 2.33 x 3.11 m
Hamm	3518 HT	17.8 tonnes	2.22 m	331/243 kN	6.21 x 2.39 x 2.98 m
XCMG	XS185	18 tonnes	2.35 m	340/240 kN	6.99 x 2.35 x 3.2 m
Sany	SSR180C	18 tonnes	2.13 m	380/275 kN	6.49 x 2.31 x 3.3 m
Caterpillar	CS78B	18.7 tonnes	2.13 m	332/166 kN	6.13 x 2.9 x 3.11 m
Dynapac	CA6000D	19.3 tonnes	2.13 m	360/150 kN	6.24 x 2.34 x 2.89 m
Hamm	3520	19.8 tonnes	2.22 m	331/243 kN	6.21 x 2.39 x 2.98 m
XCMG	XS205	20 tonnes	2.13 m	385/270 kN	6.99 x 2.13 x 3.2 m
XCMG	XS265	26 tonnes	2.47 m	435/315 kN	6.99 x 2.47 x 3.43 m



Smooth Drum Vibe Rollers

BRAND	MODEL	WHEELS	SPECS
Isuzu	NP575-155	4	9 x compartment bunded cabinet, Keyrek 1500 ute crane
Isuzu	FVZ240-300	6	8 x liquid tanks, grease set up, compressor, bunded cabinet
Isuzu	FVZ240-350	6	8 x liquid tanks, grease set up, compressor, bunded cabinet
Isuzu	FVZ260-300	6	8 x liquid tanks, grease set up, compressor, bunded cabinet
Isuzu	FYH300-350	8	8 x liquid tanks, grease set up, compressor, bunded cabinet



Service Trucks

POWER	VOLTAGE	CURRENT	WEIGHT	DIMENSIONS (L x W x H)
1.78 kWp	196.8 v	11.45 A	750 kg	4455 x 2240 x 3000 mm



Solar Panels

BRAND	MODEL	WEIGHT	PLATE WIDTH	FUEL	DIMENSIONS (L x W x H)
Husqvarna	LT 5005	62kg	230 mm	Petrol	726 x 345 x 1025 mm
Husqvarna	LT 6005	70 kg	280 mm	Petrol	726 x 345 x 1084 mm
Husqvarna	LT 8005	99 kg	330 mm	Diesel	796 x 444 x 1088 mm



Tampers



Light Towers

BRAND	MODEL	LIGHTS	POWER	WEIGHT	DIMENSIONS (L x W x H)
Enviroled	ENV6MYMOBILE	6 x LED	320 W	900 kg	235 x 147 x 240 cm
CP	CPLT V15	4 x LED	350 W	702 kg	167 x 110 x 250 cm
Genmac	Bellatrix	4 x LED	320W	850 kg	233 x 147 x 245 cm
Generac	V20 Hyper	4 x LED	320 W	980 kg	220 x 140 x 244 cm
Globe	Urban GP65K	6 x LED	100 W	1900 kg	366 x 224 x 293 cm
Globe	GP6Urband	6 x LED	350 W	1706 kg	350 x 270 x 180cm
Globe	Smart GPF1200	2 x SOLAR	100 W	850 kg	100 x 100 x 290 cm



Multi Tyre Pneumatic Rollers

BRAND	MODEL	WEIGHT	ROLLER WIDTH	VIBE FORCE	DIMENSIONS (L x W x H)
Hamn	HP280	9,48 t	1,83 m	19 km/h	4,97 x 2,16 x 3 m
Ammann	AP240	9,34 t	1,99 m	19 km/h	4,8 x 2,3 x 3 m
Caterpillar	CW34LRC	9,65 t	2,09 m	19 km/h	5,35 x 2,16 x 3 m
Bomag	BW24RH	10 t	1,98 m	20 km/h	5,07 x 2,26 x 3,08 m
Caterpillar	CW34	10 t	2,09 m	19 km/h	5,35 x 2,16 x 3 m
Hamn	GRW280-20	18,3 t	2,08 m	19 km/h	4,67 x 2,14 x 2,99 m
XCMG	XP265S	26 t	2,075 m	19 km/h	5,28 x 2,175 x 3 m



Padfoot Vibe Rollers

BRAND	MODEL	WEIGHT	ROLLER WIDTH	VIBE FORCE	DIMENSIONS (L x W x H)
XCMG	XS83PD	8,73 t	1,68 m	125/85 kN	5,35 x 1,86 x 3,12 m
Caterpillar	CS56B	11,5 t	2,13 m	301 kN	5,86 x 2,3 x 3,11 m
Bomag	BW211	12,62 t	2,13 m	275/202 kN	5,84 x 2,25 x 2,985 m
Caterpillar	CS126C	12,65	2,13 m	149 kN	5,7 x 2,3 x 3 m
XCMG	XS123PD	12,85 t	2,13 m	190/280 kN	5,94 x 2,3 x 3,25 m
Dynapac	CA362PD	14,1 t	2,13 m	300/146 kN	5,75 x 2,38 x 2,99 m
Caterpillar	CP68B	14,68 t	2,13 m	301/141 kN	6,05 x 2,33 x 3,11 m
Hamn	3516P	15,86 t	2,14 m	256/215 kN	6,075 x 2,27 x 2,95 m
Bomag	BW216	16,1 t	2,13 m	275/202 kN	6,1 x 2,3 x 2,26 m
Caterpillar	CP74B	16,3 t	2,13 m	332 kN	6,05 x 2,33 x 3,11 m
XCMG	XS165PD	16,85 t	2,13 m	340/236 kN	6,01 x 2,31 x 3,15 m
Caterpillar	CP76B	17,68 t	2,13 m	332 kN	6,05 x 2,33 x 3,11 m
Sany	SSR180C	18 t	2,13 m	380/275	6,49 x 2,31 x 3,3 m
Hamn	3518P	18,02 t	2,22 m	331/243 kN	6,21 x 2,39 x 3,05 m
XCMG	XS185PD	18,8 t	2,13 m	340/240 kN	6,99 x 2,35 x 3,2 m
Dynapac	CA6000PD	19,3 t	2,13 m	360/150 kN	6,2 x 2,3 x 3 m
Bomag	BW219D	19,4 t	2,13 m	314/240 kN	6,2 x 2,3 x 3,02 m
Hamn	3520P	19,8 t	2,22 m	331 kN	6,21 x 2,39 x 2,98 m
XCMG	XS205PD	20,8 t	2,13 m	385/270 kN	6,99 x 2,35 x 3,2 m
XCMG	XS265PD	26,3 t	2,36 m	435/315 kN	6,99 x 2,47 x 3,43 m



Plate Compactors

Husqvarna	LG 164	157 kg	350 mm	28 kN	119 x 350 x 1069 mm
Husqvarna	LG 204	211 kg	500 mm	36 kN	1334 x 500 x 1126 mm
Husqvarna	LG 300	270 kg	500 mm	40 kN	1385 x 500 x 1120 mm
Husqvarna	LG 400	398 kg	650 mm	52 kN	1690 x 650 x 1150 mm
Husqvarna	LG 504	513 kg	700 mm	65 kN	1670 x 750 x 1190 mm
Bomag	BPR 70	570 kg	700 mm	70 kN	980 x 850 x 1180 mm
Bomag	BPR 100/80	710 kg	650 mm	100 kN	1890 x 950 x 1080 mm
Husqvarna	LH 700	780 kg	660 mm	95 kN	1200 x 660 x 1470 mm
Husqvarna	LH 804	820 kg	660 mm	95 kN	1150 x 660 x 790 mm



Pump Accessories

Weda	LG6N	Submersible Slurry	1200 L/pm	23 m	914 x 435 x 413 mm
Calpeda	SDX	Submersible Slurry	850 L/pm	648 m	644 x 203 x 203 mm
Atlas Copco	WedaS30	Submersible Slurry	950 L/pm	18,59 m	620 x 326 x 250 mm
Atlas Copco	D50	Submersible Dewatering	2300 L/pm	25 m	720 x 330 x 278 mm
Atlas Copco	Weda D30	Submersible Dewatering	1450 L/pm	25m	495 x 290 x 220 mm
Calpeda	NMS	Submersible Dewatering	5000 L/pm	45 m	666 x 320 x 320 mm
Xylem	Flygt2400	Submersible Dewatering	100k L/pm	200 m	1135 x 930 x 930 mm
Euromachchine	661ZT	Surface Dewatering	10,599 L/pm	89,9 m	2600 x 1100 x 1710 mm
Atlas Copco	PAS200HF	Surface Dewatring	15,823 L/pm	53 m	1940 x 3220 x 2195 mm
Euromachchine	6NN1T	Surface Dewatering	10,410 L/pm	42,6 m	2600 x 1100 x 1710 mm
Atlas Copco	PAS100MF	Surface Dewatering	9000 L/pm	42 m	1110 x 2560 x 1705 mm
Atlas Copco	PAS150MF	Surface Dewatering	9000 L/pm	37 m	1070 x 2220 x 1670 mm
Atlas Copco	PAS150HF	Surface Dewatering	6500 L/pm	51 m	2490 x 1080 x 1660 mm
Sykes	HH80-325	Surface Dewatering	1783 L/pm	105 m	1870 x 910 x 1420 mm
Atlas Copco	VAR6-250	Surface Dewatering	5,67 L/pm	33 m	1070 x 2220 x 1670 mm
Atlas Copco	PACH64	High Head	7381 L/pm	152,4 m	1940 x 3250 x 2155 mm
Euromachchine	Ardita	High Head	3255 L/pm	213 m	3500 x 1500 x 2500 mm



Pumps

TYPE	LENGTH	WEIGHT	DIMENSIONS (L x W x H)
Male	6 m	562 kg	6000 x 540 x 800 mm
Female	6 m	555 kg	6000 x 540 x 800 mm



Portable Steel Barriers

TYPE	DESCRIPTION	DIMENSIONS (L x W x H)
Single toilet	110 kg Single toilet cubicle	1190 x 1190 x 2310 mm
Single Shower	400 kg Single shower cubicle	1900 x 1800 x 2500 mm
Toilet & Shower Duo	2 Cubicles plus 2 x 450L water storage tanks	3900 x 2390 x 2500 mm
Abition Block	4 Toilet cubicles plus 2500L & 1500L water tanks	6058 x 2438 x 2896 mm
Accommodation	2 Bedroom w/ single beds & RC air-con	6068 x 2438 x 2896 mm
First Aid Room	2 Rooms with sink, desk, table, bed, RC air-con	6058 x 2438 x 2896 mm
Hazardous Goods	Steel grid floor, vents and draining valves	6058 x 2438 x 2896 mm
Lunch Room	1 Room w/ tables, chairs, kitchenette, RC air-con	6058 x 2438 x 2896 mm
Office	2 Offices with desks, chairs, RC air-con	6058 x 2438 x 2896 mm
Hydration Station	Solar powered, 1000L water packs, chest freezer, air-con, 24/7 remote access	
Dome Shelter	Double dome shelter with workshop & storage	



Portable Buildings

TYPE	BRAND	CLEARANCE	DIMENSIONS (L x W x H)
------	-------	-----------	------------------------

Standpipe	Liquimech	4,2 m	3312 x 1760 x 4200 mm
Standpipe	Liquimech	4,8 m	3312 x 1760 x 4800 mm
Standpipe	Liquimech	5,2 m	3312 x 1760 x 5200 mm
Standpipe	Liquimech	5,8 m	3312 x 1760 x 5800 mm
Standpipe	Liquimech	6,5 m	3312 x 1760 x 6500 mm
Standpipe	Liquimech	8,6 m	3312 x 1760 x 8600 mm
Discharge Hose			
Flow Meters			
HDPE Pipe			
Hose & Cable Floats			
Pontoons			
Remote Monitoring			
Suction Hose			

Forklifts



BRAND	MODEL	MAX LOAD	LOAD CENTRE	LIFTING HEIGHT	WEIGHT	DIMENSIONS (LxWxH)
XCMG	FD25T	2.5 t	500 mm	3 m	3.8 t	3.7 x 1.1 x 2.05 m
Hyster	H2.5XT	2.5 t	500 mm	3.29 m	4.04 t	3.58 x 1.1 x 2.1 m
Hyster	H3.0XT	3 t	500 mm	3.1 m	4.65 t	3.69 x 1.2 x 2.19 m
XCMG	FD35T	3.5 t	500 mm	3 m	4.7 t	3.9 x 1.2 x 2.07 m
LiftSmart	LS-RT35	3.5 t	500 mm	4.1 m	5.6 t	4.3 x 1.59 x 2.4 m
Hyster	H4.0FT	4t	522 mm	3 m	6.29 t	3.9 x 1.7 x 2.1 m
JCB	945	4 t	600 mm	4.5 m	7.5 t	3.6 x 2.2 x 2.5 m
XCMG	FD50T	5 t	500 mm	3 m	7.9 t	4.7 x 1.99 x 2.5 m
LiftSmart	LS-RF50	5 t	600 mm	6 m	8.9 t	4.8 x 2.1 x 2.6 m
Manitou	MX50-4	5 t	600 mm	3.7 m	7.6 t	4.9 x 2.08 x 2.49 m
Enforcer	FLDAXF50	5 t	600 mm	4.5 m	8.9 t	4.8 x 2.1 x 2.5 m
Hyster	H5.0FT	5 t	600 mm	4.14 m	7.2 t	4.4 x 1.4 x 2.3 m
XCMG	FD70T	7 t	500 mm	3 m	9.3 t	4.8 x 1.99 x 2.6 m
Hyster	H8.00XM	8 t	600 mm	7 m	12.3 t	5.4 x 2.4 x 3 m
Crown	CD90S	9 t	600 mm	6.05 m	12.1 t	5.24 x 2.2 x 2.8 m
XCMG	XCF1006T	10 t	600 mm	3 m	12.4 t	5.5 x 2.1 x 2.85 m
Kalmar	DCG160	16 t	1200 mm	5 m	22.4 t	8 x 2.5 x 2.9 m
Hyster	H16.00XM	16 t	600 mm	6.6 m	19.7 t	6.5 x 2.6 x 5.5 m
XCMG	XCF1606K	16 t	1200 mm	3 m	19.5 t	6.2 x 2.5 x 3.3 m
XCMG	XCF3212K	32 t	1200 mm	4 m	43 t	9.2 x 3.46 x 4.1 m

BRAND	MODEL	POWER	OUTPUT	WEIGHT	DIMENSIONS (LxWxH)
XCMG	FD25T	25 t	500 mm	3 m	3.7 x 1.1 x 2.05 m
Hyster	H2.5XT	2.5 t	500 mm	3.29 m	4.04 t
Hyster	H3.0XT	3 t	500 mm	3.1 m	4.65 t
XCMG	FD35T	3.5 t	500 mm	3 m	4.7 t
LiftSmart	LS-RT35	3.5 t	500 mm	4.1 m	5.6 t
Hyster	H4.0FT	4t	522 mm	3 m	6.29 t
JCB	945	4 t	600 mm	4.5 m	7.5 t
XCMG	FD50T	5 t	500 mm	3 m	7.9 t
LiftSmart	LS-RF50	5 t	600 mm	6 m	8.9 t
Manitou	MX50-4	5 t	600 mm	3.7 m	7.6 t
Enforcer	FLDAXF50	5 t	600 mm	4.5 m	8.9 t
Hyster	H5.0FT	5 t	600 mm	4.14 m	7.2 t
XCMG	FD70T	7 t	500 mm	3 m	9.3 t
Hyster	H8.00XM	8 t	600 mm	7 m	12.3 t
Crown	CD90S	9 t	600 mm	6.05 m	12.1 t
XCMG	XCF1006T	10 t	600 mm	3 m	12.4 t
Kalmar	DCG160	16 t	1200 mm	5 m	22.4 t
Hyster	H16.00XM	16 t	600 mm	6.6 m	19.7 t
XCMG	XCF1606K	16 t	1200 mm	3 m	19.5 t
XCMG	XCF3212K	32 t	1200 mm	4 m	43 t

CLASS	AXLE	CAPACITY	FUEL	FEATURES
Trailer	Dual	1000 Lt	Diesel	AS Compliant, electric brakes
Trailer	Dual	1200 Lt	Diesel	AS1692, CAT .3, auto shut-off nozzle
Trailer	Dual	1400 Lt	Diesel	AS Compliant, 12 V electric pump
Trailer	Dual	1500 Lt	Diesel	AS Compliant, electric brakes
Trailer	Dual	2000 Lt	Diesel	AS Compliant, spill kit,
Trailer	Dual	2200 Lt	Diesel	AS Compliant, electric brakes
Trailer	Tri	3000 Lt	Diesel	AS Compliant, electric brakes
Truck	NA	14,000 Lt	Diesel	AS1657-1992, mine spec.

BRAND	MODEL	POWER	OUTPUT	VOLTAGE	WEIGHT	DIMENSIONS (LxWxH)
Genmac	Complis	5 kVA	5.5 kW	230V	95 kg	810 x 550 x 680 mm
Denyo	6kVA Single	6 kVA	5.2 kW	240V	239 kg	1140 x 650 x 795 mm
Denyo	10ESX	10 kVA	8 kW	240V	503 kg	1390 x 650 x 900 mm
Globe	GF10KLR1	10 kVA	8 kW	240V	391 kg	1705 x 816 x 1168 mm
Globe	HAC15K	15 kVA	12.5 kW	240V	950 kg	1650 x 704 x 1923 mm
Denyo	DCA15LSK	15 kVA	16.5 kW	415V	516 kg	1390 x 650 x 900 mm
Genmac	Dynamic	20 kVA	16 kW	400V	726 kg	1900 x 800 x 1230 mm
Denyo	LG25IS	25 kVA	20 kW	415V	591 kg	1540 x 650 x 900 mm
Genmac	Strong	30 kVA	24 kW	400V	975 kg	2220 x 960 x 1258 mm
Denyo	DCA35SPK	35 kVA	32 kW	415V	890 kg	1900 x 850 x 990 mm
Denyo	LG40IS	40 kVA	35 kW	415V	910 kg	1980 x 850 x 1220 mm
Genmac	Strong	45 kVA	36 kW	400V	1247 kg	2213 x 960 x 1258 mm
Denyo	DCA60ES12	60 kVA	48 kW	415V	1120 kg	2200 x 880 x 1250 mm
Genmac	King	80 kVA	64 kW	400V	1403 kg	2250 x 1056 x 1700 mm
Genmac	Queen	100 kVA	80 kW	400V	1641 kg	2950 x 1056 x 1900 mm
Denyo	DACE100ESI	100 kVA	80 kW	415V	1730 kg	2750 x 1050 x 1350 mm
Cummins	PLG-CM164S	150 kVA	110 kW	415V	2035 kg	2860 x 1110 x 1960 mm
Cummins	PLGG1200S	220 kVA	160 kW	415V	2450 kg	3250 x 1126 x 2172 mm
Denyo	DCA220SPK3	220 kVA	200 kW	415V	3670 kg	3650 x 1300 x 1750 mm

Generators



Loaders



BRAND	MODEL	BUCKET	POWER	WEIGHT	DIMENSIONS (LxW x H)
Komatsu	WA150	1.5 m3	96@2000 rpm	75 t	6.32 x 2.39 x 3.03 m
Caterpillar	930K	2.1 m3	119@1800 rpm	131 t	7.53 x 2.54 x 3.34 m
Komatsu	WA270	2.3 m3	111@2000 rpm	134 t	7.51 x 2.47 x 3.2 m
Komatsu	WA250	2.5 m3	104@2000 rpm	138 t	6.9 x 2.55 x 3.2 m
Komatsu	WA320	2.6m3	123@2100 rpm	16.23 t	7.92 x 2.58 x 3.21 m
XCMG	XC968 EV	3.2 m3	Electric 270kW	21.6 t	8.66 x 2.99 x 3.45 m
Sany	SW405K	3.2 m3	195@2200 rpm	18.5	8.1 x 2.2 x 3.52 m
Komatsu	WA380	3.6 m3	143@2100 rpm	16.6 t	8.1 x 2.9 x 3.39 m
Caterpillar	950M	3.4 m3	151@2200 rpm	18.39 t	8.29 x 2.93 x 3.46 m
XCMG	XC958	3.5 m3	164@2200 rpm	19.6 t	7.07 x 2.85 x 3.34 m
Caterpillar	962M	3.8 m3	202@2200 rpm	20.2 t	7.2 x 2.8 x 3.44 m
Caterpillar	966M	3.8 m3	207@1800 rpm	23.2 t	7.28 x 3 x 3.52 m
XCMG	XC978	4.5 m3	216@2100 rpm	24.5 t	7.55 x 2.99 x 3.5 m
Komatsu	WA480	4.6 m3	173@2100 rpm	20 t	8.69 x 2.99 x 3.39 m
Caterpillar	972M	5 m3	251@2100 rpm	24.89 t	7.77 x 3 x 3.52 m
XCMG	XC998	5.4 m3	261@2200 rpm	30.5 t	7.99 x 3.35 x 3.9 m
Hitachi	ZW370	5.4 m3	288@1350 rpm	33.68 t	9.86 x 3.47 x 3.76 m
Caterpillar	980M	5.7 m3	313@1100 rpm	30 t	9.49 x 3.26 x 4.11 m
XCMG	XC9108	6.2 m3	277@2100 rpm	35 t	9.8 x 3.39 x 3.95 m
Komatsu	WA500	6.3 m3	263@1900 rpm	37.2 t	9.95 x 3.4 x 3.78 m
Caterpillar	982M	6.4 m3	317@1700 rpm	35.5 t	10.17 x 3.45 x 4.1 m
Komatsu	WA600	6.4 m3	393@1800 rpm	52.7 t	11.98 x 3.68 x 4.46 m
Volvo	L260H	7 m3	309@1500 rpm	33.98 t	7.59 x 3.16 x 3.72 m
XCMG	LW1200KN	7 m3	418@2000 rpm	53 t	12.35 x 3.98 x 4.3 m

BRAND	MODEL	MOULD BOARD	POWER	WEIGHT	DIMENSIONS (LxW x H)
XCMG	GR1003	3.05 m	81@2200 rpm	75 t	71 x 3.05 x 3.1 m
John Deere	772D	3.66 m	185@2100 rpm	15.5 t	10.3 x 3.66 x 3.1 m
XCMG	GR4205T	3.66 m	178@2200 rpm	175 t	9.3 x 3.66 x 3.4 m
Caterpillar	120M	3.7 m	138@2000 rpm	14.49 t	9.93 x 3.7 x 3.3 m
Caterpillar	140M	3.7 m	136@2000 rpm	16.5 t	10.1 x 3.7 x 3.3 m
Caterpillar	150M	3.7 m	136@2000 rpm	16.5 t	10.1 x 3.7 x 3.3 m
Caterpillar	160M	3.7 m	159@2000 rpm	16.8 t	10.1 x 3.7 x 3.3 m
Komatsu	GD555-5	3.71 m	193@2000rpm	18.1 t	10.3 x 3.71 x 3.2 m
Komatsu	GD65505	4.32 m	218@2100 rpm	18.5 t	10.5 x 4.32 x 3.2 m
John Deere	872G	4.27 m	175@2000 rpm	17.9 t	10.59 x 4.27 x 3.18 m
XCMG	GR2605T	4.27 m	194@2200 rpm	19 t	9.4 x 4.27 x 3.5 m
XCMG	GR3005T	4.57 m	242@2200 rpm	28.5 t	10.9 x 4.57 x 3.85 m
XCMG	GR3505T	4.87 m	261@2100 rpm	32 t	11.3 x 4.87 x 4.1 m
Caterpillar	16M	4.9 m	217@2000 rpm	30.6 t	11.6 x 4.9 x 3.7 m
XCMG	GR5505T	7.3 m	447@2100 rpm	74 t	16.4 x 7.3 x 4.8 m

Graders



BRAND	MODEL	POWER	OUTPUT	VOLTAGE	WEIGHT	DIMENSIONS (LxWxH)
Globe	GP250S	250 kVA	200 kW	400V	2530 kg	3300 x 1100 x 1770 mm
Genmac	Royal	300 kVA	240 kW	400V	3068 kg	3600 x 1226 x 2000 mm
Able	LG50CS	350 kVA	280 kW	380V	4100 kg	4350 x 1400 x 2260 mm
Genmac	Magnum	500 kVA	400 kW	400V	4800 kg	4500 x 1666 x 2250 mm
Denyo	DCA500SPK	500 kVA	450 kW	415V	8540 kg	5480 x 1650 x 2400 mm
Genmac	Omega	600 kVA	480 kW	400V	5970 kg	4500 x 1840 x 2540 mm
Genmac	Platinum	800 kVA	640 kW	400V	10000 kg	5800 x 1940 x 2550 mm
Genmac	Extreme	1035 kVA	828 kW	400V	11680 kg	8600 x 2200 x 3070 mm
Denyo	DCA1100SPK	1100 kVA	1000 kW	415V	13000 kg	6510 x 2200 x 2790 mm
Genmac	Extreme	1705 kVA	1364 kW	400V	15500 kg	9380 x 2200 x 3550 mm

Generators (CONTINUED)



Double Drum Vibe Rollers



BRAND	MODEL	TYPE	WEIGHT	ROLLER WIDTH	DIMENSIONS (L x W x H)
-------	-------	------	--------	--------------	------------------------

Htsuyarna	LP6505	Walk Behind	765 kg	2.5 x 0.72 x 1.2 m	
Htsuyarna	LP7505	Walk Behind	1001 kg	2.5 x 0.82 x 1.26 m	
Htsuyarna	LP9505	Remote Control	1.68 tonnes	1.85 x 0.85 x 1.36 m	
Caterpillar	CB2.7	Ride On	2.51 tonnes	1.2 m	2.5 x 1.3 x 2.7 m
Hamm	HD12VV	Ride On	2.6 tonnes	1.2 m	2.4 x 1.02 x 2.46 m
Bomag	BW204d-4	Ride on	2.6 tonnes	1 m	2.5 x 1.2 x 2.5 m
XCMG	XD120S	Ride On	2.7 tonnes	1.2 m	2.5 x 1.2 x 2.5 m
XCMG	XD140S	Ride On	4.3 tonnes	1.38 m	2.9 x 2.7 x 1.5 m

Dozers



BRAND	MODEL	WEIGHT	BLADE WIDTH	BLADE TYPE	DIMENSIONS (L x W x H)
-------	-------	--------	-------------	------------	------------------------

Caterpillar	D6N	17.3 tonnes	4.08 m	PAT	4.1 x 3.02 x 3.19 m
XCMG	D170	17.4 tonnes	3.45 m		5.3 x 3.4 x 3.2 m
Caterpillar	D6T L6P	21 tonnes	3.69 m	Semi U	3.8 x 2.5 x 3.1 m
Caterpillar	D6T XL	21 tonnes	3.69 m	Semi U	3.8 x 2.5 x 3.1 m
Komatsu	D71PXI-24	23.2 tonnes	4.01 m	PAT	5.8 x 2.8 x 3.17 m
XCMG	D260	24.6 tonnes	5.6m	Straight	5.59 x 3.7 x 3.5 m
Komatsu	D65EXI-18	24.3 tonnes	4.06 m	Semi U	5.4 x 4.06 x 3.3 m
Caterpillar	D7R	25.7 tonnes	3.98 m	Semi U	7.1 x 2.88 x 3.39 m
XCMG	D360	35.6 tonnes	6.1 m	Semi U	9.09 x 4.13 x 3.7 m
Caterpillar	D8T	37.2 tonnes	4.25 m	U	7.87 x 3.06 x 3.46 m

Dumpers



BRAND	MODEL	NET LOAD	DUMPER TYPE	DIMENSIONS (L x W x H)
-------	-------	----------	-------------	------------------------

Wacker Neuson	DV90	9 tonnes	V	4.6 x 2.4 x 3.3 m
Thwaites	Mach594	9 tonnes	Front Tip	4.6 x 2.4 x 3.3 m

Dust Suppression Fans



BRAND	MODEL	POWER	GEN. REQUIRED	WEIGHT	DIMENSIONS (L x W x H)
-------	-------	-------	---------------	--------	------------------------

Generac	DF 4500	4 kW	3 Phase 79 kW	290 kg	1.7 x 1.16 x 1.8 m
Generac	DF7500	7.5 kW	3 Phase 20 kW	760 kg	3.3 x 1.83 x 2.18 m
Generac	DF15000	15 kW	3 Phase 35 kW	810 kg	3.3 x 1.83 x 2.18 m
Generac	DF20000	20 kW	3 Phase 50 kW	850 kg	3.3 x 1.83 x 2.18 m

Excavators



BRAND	MODEL	WEIGHT	TRACKS	BUCKET CAPACITY	DIG DEPTH	DIMENSIONS (LxWxH)
-------	-------	--------	--------	-----------------	-----------	--------------------

Komatsu	PC15R	1.65 t	Rubber	0.04 m3	3.74 x 1.0 x 2.22 m	
Sany	SY6C	1.75 t	Rubber	0.04 m3	4.0 m	3.57 x 0.98 x 2.42 m
Caterpillar	301.8	1.8 t	Rubber	0.03 m3	3.42 m	3.69 x 1.34 x 2.19 m
Komatsu	PC14R	1.8 t	Rubber	0.03 m3	3.28 m	3.38 x 1.3 x 2.32 m
XCMG	XE17U	1.8 t	Rubber	0.04 m3	2.29 m	3.56 x 1.24 x 2.34 m
XCMG	XE19U	1.9 t	Rubber	0.04 m3	2.52 m	3.55 x 1.3 x 2.39 m
Caterpillar	302	2.26 t	Rubber	0.33 m3	2.74 m	3.9 x 1.4 x 2.3 m
XCMG	XE27U	2.2 t	Rubber	0.06 m3	2.8 m	4.19 x 1.5 x 2.58 m
Komatsu	PC30MR	3.1 t	Rubber	0.09 m3	2.76 m	4.56 x 1.55 x 2.52 m
Hitachi	ZX33U	3.72 t	Rubber	0.08 m3	3.1 m	4.5 x 1.55 x 2.48 m

Excavators (CONTINUED)



BRAND	MODEL	WEIGHT	TRACKS	BUCKET CAPACITY	DIG DEPTH	DIMENSIONS (LxWxH)
-------	-------	--------	--------	-----------------	-----------	--------------------

Komatsu	PC35MR	3.73 t	Rubber	0.11 m3	4.9 x 1.74 x 2.52 m	
Sany	SY35U	3.86 t	Rubber	0.12 m3	3.1 m	4.9 x 1.72 x 2.51 m
Komatsu	PC55MR	5.2 t	Rubber	0.07 m3	3.77 m	5.55 x 1.96 x 2.59 m
Sany	SY50U	5.3 t	Rubber	0.39 m3	3.42 m	5.39 x 1.96 x 2.63 m
XCMG	XE55U	5.7 t	Rubber	0.3 m3	3.64 m	5.34 x 1.83 x 2.55 m
Caterpillar	308CR	8.04 t	Rubber	0.23 m3	4.69 m	5.83 x 2.32 x 2.61 m
Komatsu	PC88MR	8.5 t	Rubber	0.34 m3	4.2 m	6.35 x 2.33 x 2.73 m
Sany	SY80U	8.8 t	Rubber	0.39 m3	4.53 m	7.1 x 2.2 x 2.55 m
XCMG	XE80U	9.5 t	Rubber	0.35 m3	3.99 m	6.58 x 2.3 x 2.73 m
XCMG	XE90U	9.5 t	Rubber	0.5 m3	3.99 m	6.58 x 2.3 x 2.73 m
Komatsu	PC130	13 t	Steel	0.08 m3	5.52 m	7.59 x 2.5 x 2.875 m
Sany	SY135U	13.5 t	Steel	0.6 m3	5.51 m	7.7 x 2.49 x 2.81 m
Komatsu	PC138US	13.85 t	Rubber	0.53 m3	5.48 m	7.26 x 2.85 x 4.4 m
XCMG	XE155DK	14.6 t	Steel	0.52 m3	5.535 m	7.79 x 2.67 x 2.9 m
Sany	SY155U	15 t	Wheeled	0.93 m3	5.4 m	8 x 2.6 x 3.2 m
Sany	SY155U	16 t	Steel	0.93 m3	5.46 m	7.3 x 2.49 x 3.82 m
XCMG	XE155UCR	16.6 t	Steel	0.65 m3	5.535 m	7.94 x 2.49 x 3.33 m
Hitachi	ZX160LC	17.5 t	Steel	0.82 m3	5.98 m	8.62 x 2.5 x 2.95 m
Hitachi	ZX210H	21 t	Steel	0.45 m3	6.6 m3	9.6 x 2.86 x 3.18 m
Caterpillar	320DL	21.69 t	Steel	1.4 m3	6.64 m	9.4 x 3.1 x 3.1 m
Caterpillar	320GC	21.9 t	Steel	1 m3	6.72 m	9.53 x 3.17 x 2.96 m
Sany	SY215C	22 t	Steel	0.93 m3	6.6 m	9.68 x 2.98 x 3.44 m
Sany	" Long Reach	22 t	Steel	0.45 m3	11.97 m	12.36 x 3.18 x 3.26 m
Komatsu	PC200LC	22 t	Steel	1.17 m3	6.62 m3	9.42 x 2.8 x 2.97 m
Komatsu	" Long Reach	22 t	Steel	1.17 m3		
Komatsu	PC210LC	22.4 t	Steel	1.65 m3	6.62 m	9.6 x 2.98 x 3.04 m
XCMG	XE215LC	22.9 t	Steel	1.05 m3	6.68 m	9.625 x 3 x 3.1 m
Komatsu	PC228 Zero Swing	23 t	Steel	0.97 m3	7 m	9 x 3 x 3 m
XCMG	XE235UCR	26.1 t	Steel	1.0 m3	6.6 m	9 x 2.99 x 3.08 m
Sany	SY305H	32.8 t	Steel	1.4 m3	7.41 m	11.1 x 3.19 x 3.6 m
Komatsu	PC300LC	33.8 t	Steel	2.1 m3	6.54 m	11.4 x 3.19 x 3.48 m
XCMG	XE310LC	34 t	Steel	1.4 m3	7.04 m	10.7 x 3.19 x 3.3 m
Sany	SY365H	36 t	Steel	1.5 m3	7.05 m	11.5 x 3.19 x 3.5 m
Hitachi	ZX350H	36 t	Steel	1 m3	6.84 m	11.1 x 3.19 x 3.47 m
Komatsu	PC350LC	36.3 t	Steel	2.66 m3	6.7 m	11.29 x 2.99 x 3.4 m
XCMG	XE370DK	36.9 t	Steel	1.9 m3	6.9 m	11.3 x 3.2 x 3.5 m
Caterpillar	336	37.2 t	Steel	2.27 m3	8.2 m	11.2 x 3.44 x 3.17 m
XCMG	XE380LC	40.5 t	Steel	2.1 m3	7.2 m	11.3 x 3.2 x 3.5 m
Komatsu	PC490LC	49.6 t	Steel	2.7 m3	7.7 m	11.9 x 3.5 x 3.6 m
XCMG	XE800D	78 t	Steel	5.6 m3	6.6 m	12.6 x 4.4 x 4.6 m
Sany	SY870	78.6 t	Steel	5.4 m3	7.24 m	13 x 4.3 x 4.7 m
Komatsu	PC850	79.8 t	Steel	8.4 m	4.3 m3	13.9 x 4.2 x 4.8 m
Komatsu	PC800LC	81.8 t	Steel	6.9 m3	8.4 m	13.9 x 4.3 x 4.8 m
XCMG	XE950DA	91 t	Steel	7 m3	6.9 m	12.1 x 4.4 x 4.7 m
XCMG	XE1350	121 t	Steel	7 m3	8.2 m	14.7 x 5.5 x 6.1 m
XCMG	XE2000	192 t	Steel	12 m3	5.9 m	13.6 x 7.1 x 7.9 m
XCMG	XE3000	290 t	Steel	15 m3	8.6 m	18 x 8 x 8.4 m
XCMG	XE4000	384 t	Steel	22 m3	8.4 m	20 x 9 x 8.59 m
XCMG	XE5600	569.7 t	Steel	35 m3	8.8 m3	22 x 10.3 x 9.1 m
XCMG	XE7000	672 t	Steel	34 m3	3.8 m3	23.5 x 9 x 9.4 m



Air Compressors

BRAND	TYPE	FLOW	PRESSURE	WEIGHT	DIMENSIONS (L x W x H)
-------	------	------	----------	--------	------------------------

Chicago Pneumatic	Skid	75 cfm	7 bar	500 kg	1580 x 740 x 850 mm
Chicago Pneumatic	Skid	110 cfm	7 bar	500 kg	1580 x 740 x 850 mm
Rotair	Trailer	127 cfm	7 bar	700 kg	1749 x 1340 x 1302 mm
Chicago Pneumatic	Skid	130 cfm	7 bar	750 kg	1870 x 950 x 1040 mm
Chicago Pneumatic	Skid	175 cfm	7 bar	750 kg	1870 x 950 x 1040 mm
CompAir	Trailer	176 cfm	7 bar	800 kg	3797 x 1490 x 1327 mm
Rotair	Skid	185 cfm	7 bar	850 kg	3191 x 1030 x 1361 mm
Chicago Pneumatic	Skid	190 cfm	7 bar	750 kg	1870 x 950 x 1040 mm
Rotair	Trailer	251 cfm	7 bar	1400 kg	3491 x 1620 x 1701 mm
CompAir	Trailer	268 cfm	7 bar	1200 kg	3974 x 1700 x 1440 mm
CompAir	Trailer	388 cfm	8,6 bar	1980 kg	4555 x 1820 x 1790 mm
Rotair	Trailer	400 cfm	10 bar	1920 kg	4534 x 1980 x 2137 mm
Rotair	Trailer	423 cfm	7 bar	2000 kg	4535 x 1980 x 2127 mm
Rotair	Trailer	530 cfm	10 bar	2600 kg	4242 x 1960 x 2569 mm
Atlas Copco	Trailer	860 cfm	14 bar	5300 kg	4900 x 2150 x 2500 mm
Rotair	Trailer	893 cfm	8 bar	3700 kg	6142 x 1960 x 2320 mm
Atlas Copco	Trailer	938 cfm	12 bar	5300 kg	4900 x 2150 x 2500 mm
Atlas Copco	Trailer	1020 cfm	10,3 bar	5300 kg	4900 x 2150 x 2500 mm
Atlas Copco	Trailer	1102 cfm	8,6 bar	5300 kg	4900 x 2150 x 2500 mm
Atlas Copco	Skid	2150 cfm	69 bar	3515 kg	2800 x 1850 x 2500 mm



Articulated Boom Lifts

BRAND	MODEL	TYPE	WORKING HEIGHT	REACH	UP & OVER	PLATFORM CAPACITY
-------	-------	------	----------------	-------	-----------	-------------------

JLG	340AJ	Diesel	10,33 m	6,06 m	5,17 m	230 kg
XCMG	XGA12K	Diesel	12,5 m	71 m		230 kg
Genie	Z34/221C	Diesel	12,52 m	6,78 m	4,65 m	227 kg
Snorkel	A38E	Electric	13,5 m	6,1 m	5,4m	215 kg
JLG	450AJ	Diesel	15,72 m	762 m	73 m	250 kg
Genie	Z45XC	Diesel	15,87 m	755 m	744 m	300 kg
Genie	Z45FE	Hybrid	15,92 m	6,94 m	75 m	300 kg
Haulotte	HA16RTJ	Diesel	16 m	8,3 m	765 m	230 kg
Snorkel	A46RT	Diesel	16,3 m	735 m	767 m	227 kg
XCMG	XGA16K	Hybrid	16,6 m	8,82 m		256 kg
JLG	600AJ-HC3	Diesel	18,29 m	12,37 m	81 m	299 kg
JLG	600AJ	Diesel	18,46 m	12,10 m	8,9 m	230 kg
Genie	Z-60/37FE	Hybrid	20,16 m	11,15 m	739 m	227 kg
Genie	Z62/40	Diesel	20,87 m	12,42 m	78 m	227 kg
XCMG	XGA20K	Hybrid	20,63 m	12,08 m		350 kg
Genie	Z80/60	Diesel	25,77 m	18,29 m	8,83 m	227 kg
JLG	H800AJ	Hybrid	26,38 m	15,8 m		230 kg
Haulotte	HA26RTJ	Diesel	26,4 m	175 m	9,3 m	250 kg
XCMG	XGA26K	Diesel	26,6 m	19,5 m		256 kg
JLG	1250AJP	Diesel	38,3 m	19,25 m		230 kg
Haulotte	HA41RTJ	Diesel	41,5 m	20,1 m	23,01 m	230 kg
Genie	ZX135/70	Diesel	43,15 m	21,26 m	23,01 m	272 kg



Articulated Dump Trucks

BRAND	MODEL	PAYLOAD	WEIGHT	SPEED	DIMENSIONS (L x W x H)
-------	-------	---------	--------	-------	------------------------

Komatsu	HM300	27,3 tonnes	22,5 tonnes	60 km/hr	10,5 x 3,5 x 2,9 m
XCMG	XDA30	30 tonnes	27 tonnes	56 km/hr	10,3 x 3,2 x 3,78 m
Komatsu	HM400	40 tonnes	34 tonnes	56 km/hr	11,1 x 3,45 x 3,735 m
Caterpillar	745	41 tonnes	32,87 tonnes	55 km/hr	11,42 x 3,42 x 4,04 m
XCMG	XDA45	41 tonnes	34 tonnes	47 km/hr	11 x 3,95 x 3,8 m



Battery Packs

ZERO EMISSION Lithium Iron Phosphate LiFePO4

BRAND	MODEL	RATED POWER	STORAGE	WEIGHT	DIMENSIONS (LxWxH)
-------	-------	-------------	---------	--------	--------------------

Atlas Copco	ZBP45	36 kW / 45 kVA	46 kWh	1325 kg	1,3 x 1,16 x 1,9 m
Atlas Copco	ZBE45	12 kW / 15 kVA	46 kWh	1230 kg	1,3 x 1,16 x 1,9 m
Atlas Copco	ZBC100-500	100 kW / 100 kVA	537 kWh	9460 kg	2,99 x 2,43 x 2,9 m
Atlas Copco	ZBC150-500	150 kW / 150 kVA	537 kWh	9650 kg	2,99 x 2,43 x 2,9 m
Atlas Copco	ZBC250-500	250 kW / 250 kVA	537 kWh	9900 kg	2,99 x 2,43 x 2,9 m
Atlas Copco	ZBC500-250	500 kW / 500 kVA	250 kWh	8000 kg	2,99 x 2,43 x 2,9 m



Backhoes

BRAND	MODEL	DIG DEPTH	BUCKET WIDTH	WEIGHT	DIMENSIONS (LxWxH)
-------	-------	-----------	--------------	--------	--------------------

Caterpillar	432	4,28 m	2,41 m	8,3 tonnes	5,9 x 2,4 x 3,8 m
JCB	4CX	4,32 m	2,33 m	81 tonnes	5,91 x 2,36 x 3,54 m
Komatsu	WB97R	4,8 m	2,3 m	76 tonnes	5,9 x 2,7 x 2,3 m
Caterpillar	428	5,89 m	0,457 m	8 tonnes	5,71 x 2,36 x 3,74 m
JCB	5CX	6,51 m	2,33 m	10,6 tonnes	6,74 x 2,36 x 3,97 m

Trencher					Hydraulic Angle Broom
----------	--	--	--	--	-----------------------

Rake Bucket					Grid Roller
-------------	--	--	--	--	-------------

Leveling Attachment					TRACTOR ATTACHMENTS
---------------------	--	--	--	--	---------------------

GPS					Roller
-----	--	--	--	--	--------

GP Bucket					GPS
-----------	--	--	--	--	-----

Forks					GPS
-------	--	--	--	--	-----

Bucket Broom					GRADER ATTACHMENTS
--------------	--	--	--	--	--------------------

Auger					
-------	--	--	--	--	--

SKID STEER ATTACHMENTS

Trenching Bucket					Jib
------------------	--	--	--	--	-----

Tree & Stump Mulcher					GPS
----------------------	--	--	--	--	-----

Trapezoidal Bucket					GP Bucket
--------------------	--	--	--	--	-----------

Tilting Bucket					Forks
----------------	--	--	--	--	-------

Sleeper Grab					Batter Bucket
--------------	--	--	--	--	---------------

Skeleton Buckett					TELEHANDLER ATTACHMENTS
------------------	--	--	--	--	-------------------------

Sieve Bucke					Trenching Bucket
-------------	--	--	--	--	------------------

Screening Bucket					Forks
------------------	--	--	--	--	-------

Rock Grapple					GPS
--------------	--	--	--	--	-----

Rock Breaker					GP Bucket
--------------	--	--	--	--	-----------

Ripper					Batter Bucket (Digger)
--------	--	--	--	--	------------------------

Plate Compactor					Batter Bucket
-----------------	--	--	--	--	---------------

Misu Heavy Duty Screen					Auger
------------------------	--	--	--	--	-------

Mechanical Grab					BACKHOE ATTACHMENTS
-----------------	--	--	--	--	---------------------

Hydraulic Grapple					Tyre Grab
-------------------	--	--	--	--	-----------

Hydraulic Grab					Stemming Bucket
----------------	--	--	--	--	-----------------

GPS					Rake Bucket
-----	--	--	--	--	-------------

GP Grapple					Man Cage
------------	--	--	--	--	----------

GP Bucket					Log Forks
-----------	--	--	--	--	-----------

Crusher Bucket					Jib
----------------	--	--	--	--	-----

Compaction Wheel					Grain Bucket
------------------	--	--	--	--	--------------

Batter Bucket					GPS
---------------	--	--	--	--	-----

Auger					GP Bucket
-------	--	--	--	--	-----------

360° Grapple					Forks
--------------	--	--	--	--	-------

EXCAVATOR ATTACHMENTS



Attachments

TOOL HANDLER ATTACHMENTS

TOOL HANDLER ATTACHMENTS

TELEHANDLER ATTACHMENTS

TRACTOR ATTACHMENTS

FINANCE AVAILABLE



New financial year, get a NEW MACHINE

AUTHORISED DEALER FOR
XCMG
In WA, SA, NT, and the majority of QLD

BROOKS EQUIPMENT



1300 BROOKS (276 657)
sales@brooksequipment.com.au
www.brooksequipment.com.au

GR2405 MOTOR GRADER

Operating Weight - 175 tonnes
Blade Dimensions - 3.66 x 0.61 m
Rated Power - 178 kW @ 2200rpm

14' BLADE!

16/18' BLADE!

GR3505 MOTOR GRADER

Operating Weight - 32 tonnes
Blade Dimensions - 4.877 x 0.686 m
Rated Power - 261 kW @ 2100rpm

XS123S SMOOTH DRUM ROLLER

Operating Weight - 12 tonnes
Drum Width - 2.13 m
Rated Power - 104 kW @ 2200rpm

XS123PD PADFOOT ROLLER

Operating Weight - 12 tonnes
Drum Width - 2.13 m
Rated Power - 104 kW @ 2200rpm

XC948 TOOL HANDLER

Operating Weight - 11 tonnes
Bucket Capacity - 2.1m³
Rated Power - 142 kW @ 2200rpm

XC998 WHEEL LOADER

Operating Weight - 11 tonnes
Bucket Capacity - 2.1m³
Rated Power - 142 kW @ 2200rpm

XG16K 16.6m ARTIC. BOOM

Maximum Working Height - 16.6m
Platform Capacity - 256/350 kg
Platform Dimensions - 1.83x0.76x1.15 m

XGA20K 20.6m ARTIC. BOOM

Maximum Working Height - 20.63m
Platform Capacity - 256/350 kg
Platform Dimensions - 1.83x0.76x1.15 m

XE17U MINI EXCAVATOR

Operating Weight - 1.8 tonnes
Engine Model - Kubota D902
Rated Power - 11.8 kW @ 2300 rpm

XE155U MIDI EXCAVATOR

Operating Weight - 16.6 tonnes
Engine Model - Cummins QSF3.8
Rated Power - 93 kW @ 2200 rpm

XE380LC LARGE EXCAVATOR

Operating Weight - 40.5 tonnes
Engine Model - Cummins QSL9
Rated Power - 214 kW @ 2100 rpm

XC7-SR12 SKID STEER

Operating Weight - 3.68 tonnes
Bucket Capacity - 0.6m³
Rated Load - 1260kg

Plant List & SPECIFICATIONS MANUAL



- Air Compressors
- Articulated Boom Lifts
- Articulated Dump Trucks
- Attachments
- Backhoes
- Battery Packs
- Double Drum Vibe Rollers
- Dozers
- Dumpers
- Dust Suppression Fans
- Excavators
- Forklifts
- Fuel Trucks & Trailers
- Generators
- Graders
- Lighting Towers
- Loaders
- Multi Tyre Pneumatic Rollers
- Padfoot Vibe Rollers
- Plate Compactors
- Portable Buildings
- Portable Steel Barriers
- Pumps
- Pump Accessories
- Rigid Dump Trucks
- Scissor Lifts
- Service Trucks
- Skid Steer Loaders
- Smooth Drum Vibe Rollers
- Solar CCTV Towers
- Solar Panels
- Tamers
- Telehandlers
- Telescopic Boom Lifts
- Tipper Trucks
- Tool Carriers
- Tractors
- Traffic Lights & Signage
- Trailer Mounted Booms
- Vehicles
- Water Storage
- Water Trucks