

YOUR FREE COPY

THE *Eneabba*

AUTUMN 2022 ISSUE 8

Expanding our Line of Site

BROOKS TAKES SITE SERVICES NEXT LEVEL



- Sany Sales Go Number One
- CBH Group Smash Grain Record
- Access All Areas With SMC Marine



BROOKS HIRE **BROOKS** EQUIPMENT **BROOKS** ACCESS **BROOKS** TRANSPORT **BROOKS**

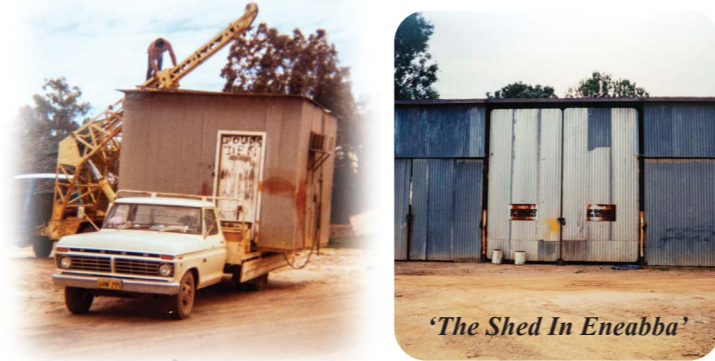
The story of Eneabba

When 23 year old Doug Brooks recognised an opportunity to hire out equipment to the mining industry in WA in 1979, he knew it was something he had to pursue. With no business experience but plenty of ambition, young Doug scrambled together every dollar he had to purchase two disassembled compressors, with the remainder of the bill being settled by bankcard.

At the time, Doug was working 12 hour days as a Fitter on Barrow Island, and he fixed the unserviceable compressors in his spare time. After a few months of paying off his debts, Doug made the bold decision to leave his job as a Fitter and start his own hire business.

He opened 'Brooks Hire Service' and ran the business from a shed in the remote WA town of Eneabba. All the while Doug was living in a 'humpy' at the rear of the shed. There were many that warned him of the difficulty of starting a new business in a very competitive industry, but Doug was determined and it was only a matter of time before he was turning a profit on his compressors.

What started as two compressors on hire, soon turned into twelve pumps on hire, but the turning point came when Doug purchased his first piece of mobile equipment, an eight tonne JEC crane.



The crane was purchased by tender in Perth and Doug didn't have the \$500 needed to freight the crane to Eneabba, so he drove it for 13 hours to get it there himself, with his trusty dog on board of course. This is a testament to the lengths that Doug would go, to ensure the success of Brooks Hire.

There are many great stories that came out of that shed in Eneabba. It was the foundation of Brooks Hire and the place where all of the 'hard yards' were done. Doug would work long hours during the week, and then drive to Perth on the weekend for parts. It was during one of these trips that he met his future wife, Roma.

By 1983, with the business continuing to grow, and Doug pursuing his life with Roma, Brooks Hire set up shop in Hogarth Street, Cannington. Then in 1990, they purchased their own yard in Canning Vale, where the Head Office is still located today. But it is that shed in Eneabba that will be remembered as the birth place of Brooks Hire Service.

In Memory of Joy Fishwick

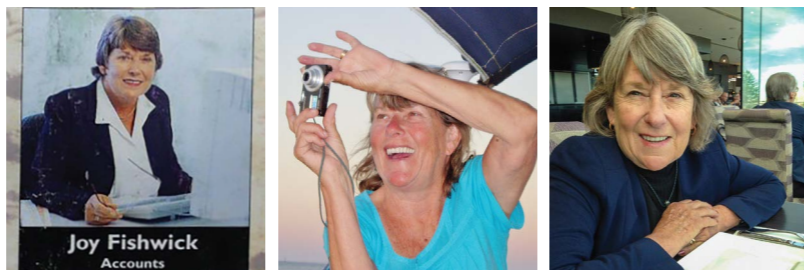
25th October 1948 - 7th February 2020

In tribute to an amazing employee, colleague, and friend, the Brooks family want to take this opportunity to remember Joy Fishwick. This quarter marks the two year anniversary of Joy's passing from terminal cancer.

Joy Fishwick joined the Brooks Hire team back in 1994. At that time, the business had one office in Perth with four full time employees. "Joy was my right hand lady in the office," said Doug Brooks, "she did everything from answer phones, to run the accounts, she did it all." For the 12 years that Joy worked at Brooks Hire, she was an integral member of the team.

Joy's husband Bob shared a few words with us about what an incredible woman Joy was. "Joy loved fishing and could catch, scale, gut, and fillet fish like a professional. She absolutely loved the ocean, a real water person. She was a confident and competent sailor, I believe the first female at South of Perth Yacht club to skipper a Flying 15 racing yacht," Bob said. "She sure knew how to have fun and party. The other Joy we knew in working mode was a competent, diligent, and intelligent professional. She took her job seriously, was extremely loyal, and didn't suffer fools. To simply say that we will all miss her is a classic understatement. I will miss her deeply."

Rest in peace Joy, you will also be missed by the Brooks family.



A few of the fantastic team over at Brooks Hire left to right -Doug Brooks, Joy Fishwick, Peter Ryan and Dirk Kapiteyn.



From the MD...

On reflection, I realise each edition of the Eneabba focuses on something Brooks does well, in this edition Teamwork and its importance at Brooks takes centre stage.

Brooks introduces Site Services to its already impressive group. The Site Services division allows Brooks to offer its customers an end to end opportunity to setup and maintain their whole work site with the capability to design, install and maintain the 'whole system'. Leading the way is Site Services GM Ben Cook who brings to the table years of experience in water management, power generation and on site services.

When talking of teamwork, I can't go past Josh Willett and his team in the eastern states. Even though the recent floods caused some of our branches challenges, Josh and the team found a way to work through the disruptions making sure their customers' needs were met. Keep up the good work.

Another successful team is Brooks and Sany. Brooks Equipment sold 17 Sany Excavators in the month of January alone. Sany is now WA's top selling excavator brand, and Brooks Equipment is Australia's top Sany dealership. Whilst Sany is relatively new in Australia, it is the number one selling brand for excavators worldwide. Nathan and the Brooks Equipment Sales team have been finding different platforms to showcase the Sany excavators, next month they will be on show at our Darwin branch.

I'd like to take this opportunity to welcome back Keith Brooks to the team. We were in need of someone to take on the Branch Manager role at Kalgoorlie and Keith offered to step in until we find a replacement. Keith picks up where he left off with the Kalgoorlie branch, holding about 140 machines out on hire at one time, it is one of the busiest branches in Australia. Keith, I think you have your work cut out for you.

Here's a question for you: does anyone know what Gary Bushell, Omar Baytie, Vinny Yap, Adrian Rorbach, Joe Piotrowski, and Steve Drage have in common? These valuable members of the Brooks team have all been with us for more than 10 years. In fact, Steve more than 20! When I mention the importance of the team, it is hard to fathom that between these guys there is more than 80 years' experience. Your contributions throughout the years are greatly appreciated.

Great things in business are never done by one person, they are done by a team, and here at Brooks we are lucky to have a great team of people. I'd like to thank each and every staff member that contributes to make this business a success, we couldn't do it without you.

Stuart Brooks

Stuart Brooks
Managing Director

BROOKS HIRE

CONTACT DETAILS

Brooks Hire Service Head Office
30 Coulson Way, Canning Vale WA 6155
Phone: 1300 276 657
Email: sales@brookshire.com.au
www.brookshire.com.au

The Eneabba is a Brooks Hire Service Pty Ltd publication. All photographs and written articles remain the property of Brooks Hire Service Pty Ltd. No reproduction in whole or in part of this publication is allowed without the permission of the Managing Director.

If you would like to make a submission, please email
marketing@brookshire.com.au

Digital Distribution 10,902 - Printed Copies 5,000

Contents

03 Expanding Our Line of Site
Brooks takes site services to the next level.

05 Access All Areas
SMC Marine take us to Port Coogee.

07 Grain Records Smashed
CBH Group share WA farmers' success.

09 Engineering The Future
The story of Contatore Engineering.

11 Masters Of Their Field
Pirone Builders built on quality.

13 From The Ground Up
Hera Engineering go sky high.

15 Sany Sales Lead The Way
Brooks Equipment Sales news.

17 The Only Way is Up
Brooks Access news.

18 It's A Win Win
Brooks Hire news.

19 Just AdBlue
Love it or hate it, here's why AdBlue is here to stay.

21 Christmas 2021
Did you get papped at the office Christmas party?

23 New Machines
Take a look at our latest arrivals.

25 Meet The Team
New staff, old staff, and Stuart's Kitchen.

31 The Puzzler Page
Relax with a cuppa and flex your brain.

33 Kids Corner
Join the dots and colour in to win.

34 Snap That
Take a look at our staff photography competition entries.

35 Equipment Hire List
View our entire fleet list with all the specifications.



The people behind the product.

To kickstart the Site Services department, Brooks sourced professional staff with extensive experience in construction and mine site management.

Ben Cook has been appointed as the Site Services General Manager. Ben's wealth of experience in the hire industry gives him the edge in providing tailored engineering solutions to our customers. Joining Ben is Mitch Foxon, Workshop Manager, and Lee Van Biezen, Product Specialist. Both men have in depth experience in water management, power generation, and on site services.

The team is backed up with a purpose-built workshop and test facility, trade qualified technicians, and hire coordinators who are always on standby for around the clock service.



Expanding Our Line Of Site

Brooks Hire Take Site Services Next Level

For over forty years Brooks Hire Service has been supplying heavy earthmoving equipment to the mining and construction industries. Now for the first time, Brooks has expanded to include a specialised Site Services division.

This specialised sector caters to all aspects of site services from power, and water management, to on site buildings, and light vehicle hire. The differentiating factor of our Site Services division is that not only does Brooks supply the equipment, we now have the capability to design the whole system, install, and maintain it.

"We have the technical expertise to engineer a complete dewatering or power generation solution for your work site."

BEN COOK, GENERAL MANAGER OF BROOKS SITE SERVICES

How did it all begin?

The very first pieces of equipment that Doug Brooks purchased for Brooks Hire back in 1979, was two used un-serviceable compressors. After getting the compressors going, he started hiring them out, then graduated to pumps, and so the business grew. By 2021, Brooks Hire was primarily hiring large earthmoving machinery with very few pumps and generators left in the fleet.

Managing Director Stuart Brooks reflected on where the business began and decided to go back to basics. "We wanted to make sure that our customers have access to quality construction equipment in all categories," said Stuart. So Brooks Hire took a step forward and purchased a whole new fleet of quality compressors, pumps, generators, and light towers.

"Just hiring the equipment out didn't fit with our company ethos of 'service first'," remarked Stuart. "We knew that with the right team, we could help our customers set up and maintain their whole work site."



Doug Brooks with one of his first compressors, and Stuart Brooks with the new stock

Site equipment supplied.

Most of the equipment supplied by the Site Services division has been recently purchased brand new. If the equipment you require isn't in stock, Brooks has the ability to purchase it specifically for your job.

- Pumps and water management for all applications
- Generators from 5kVA to 1700kVA
- Air compressors from 75cfm to 1050cfm
- Light towers - diesel and solar
- Plate compactors
- Portable buildings / site accommodation
- Mobile fuel trailers and skid mounted fuel tanks
- Welding equipment
- Light vehicle Hire
- Remote CCTV and monitoring stations



The services on offer.

Whether it's temporary or long term, the smooth operation of any work site comes down to good planning and management. Brooks Site Services team are offering the following services on all mining and construction work sites.

- Design and consultation
- HDPE pipe supply and installation
- On site installation and commissioning
- Pump rebuild and component workshop
- FIFO dewatering technicians
- Workshop test tank facilities
- Remote monitoring and management
- Water Sampling and laboratory testing
- Wet hire of Hiab crane truck

Stepping onto site.

Brooks Site Services has already made a footprint on work sites across WA, and are ready to expand to the rest of Australia. We supply equipment and site services on some WA's largest projects, proving the trust that customers put into Brooks as their supplier.





Access All Areas

Adam Neville, Project Engineer for SMC Marine with Claire Harrison, General Manager of Brooks Access at Port Coogee Marina



Artist's impression of finished Stage 3 Port Coogee Marina. Image sourced from City of Cockburn website.

SMC approached Brooks Access when they required access equipment to assist with the works at Port Coogee. Brooks Access Hire Coordinator, Ashlea Hendrie was delighted to assist. She facilitated the delivery of one of our JCB 531-70CS telescopic handlers for the job. This came with a bucket, jib, and fork attachments making it a versatile piece of equipment on the site. It is expected that the telehandler will remain on site for up to three months.

SMC Project Engineer, Adam Neville invited Brooks Access General Manager, Claire Harrison to take a look at the project up close. Adam was very accommodating in showing the scope of work that SMC has been undertaking at Port Coogee.

“The work that SMC Marine is doing at Port Coogee is of outstanding quality. It’s awesome for us to see our machines out there on the marina contributing to the project”

CLAIRE HARRISON, GENERAL MANAGER OF BROOKS ACCESS

On the other side of the country, SMC Marine has been working with Multiplex to complete works at the new Sydney Fish Market on Blackwattle Bay. Steel driven marine piles are the key piece of infrastructure in supporting the structure of the new building. The marine piling is being carried out by SMC Marine.

Other major projects of SMC Marine include:

- Glebe Island Wharf 8 - Wharf and Pile Renewal
- Land Road Pedestrian Bridge and Kayak Launch
- Narrabeen Lagoon Multi-use Trail (Stage 3)
- One Sydney Harbour Public Domain / Wulugul Walk
- 300T Travel Lift at Hervey Bay
- Chiswick Ferry Wharf
- Port Welshpool Long Jetty Reconstruction

With plenty of projects in the pipeline for SMC Marine, Brooks Access hope to see our machines on many more job sites to come.

SMC Marine Take Brooks Access To Port Coogee

Recognised as one of the most respected and trusted companies in the industry, SMC Marine (SMC) has influenced development of the maritime infrastructure landscape in Australia since 2001. SMC's portfolio includes some of Australia's most iconic wharves, jetties, and marinas along Australia's coastline and inland waterways.

“It’s a big job. Stage 3 of the Port Coogee Marina Expansion project began in mid 2021, and we expect to be here until May 2022.”

ADAM NEVILLE, PROJECT ENGINEER

Recently, SMC has been involved in WA's Stage 3 Port Coogee Marina Expansion project. Works on the 5.84 million dollar project include the construction of 69 boat pens spread across three new concrete floating jetties. Two gatehouses will be built to serve the new floating jetties. A 90 metre timber boardwalk and concrete loading berth area will also be constructed and the reconfiguration of car parking on Maraboo Island will create nine new parking bays.

Making the project unique is the use of 'Bellingham Unifloat' floating concrete jetties. These are relatively new in WA, with Port Coogee being one of the first marinas in the state to install this design.





Photo: CBH website

Grain Records Smashed!

CBH Group Share WA Farmers' Success

The CBH Group has officially marked the end of the 2021/22 harvest in Western Australia, with growers delivering 50 percent more than the five-year harvest average.

Over 90 records were smashed across the network, all culminating in the total tonnes growers delivered reaching 21.3 million tonnes. This surpasses the previous record in 2016/17 of 16.65 million tonnes and the five-year average of 14.2 million tonnes.

Of the 130 sites that received grain, 40 set new highs for tonnes delivered in one day, and 54 exceeded their previous record for total tonnes delivered to the site in one harvest.

Chief Operations Officer Mick Daw said the harvest had exceeded all expectations.

"Most growers experienced yields well above average for all crop types, and the rate at which it was harvested and delivered is unprecedented." Mr Daw said.

"Early in the growing season, we could see that harvest was going to be a big one, and as each month passed, the estimates that were being generated were truly staggering.

"Preparing our supply chain and network to safely receive and store this bumper crop was our key focus throughout 2021.

"We opened 130 sites this year, including the two new sites of Meenar and North Kojonup. We also added a record 2.4 million tonnes of emergency storage across 33 of these sites.

"Growers across WA need to be congratulated for their innovation and resilience in not only growing this magnificent crop, but their ability to strip it at a record pace." MICK DAW, CHIEF OPERATIONS OFFICER

"Our recruitment campaign for our harvest employees was also part of this preparation and was successful in ensuring we could attract the 2,000 harvest casuals to regional WA to help us with the job.

"In the end, growers delivered enough grain to fill the Optus Stadium 17 times over – a truly astounding effort."

At the peak of harvest, a new record was set with CBH receiving almost 585,000 tonnes in one day. Altogether, there were 11 days where more than 500,000 tonnes were delivered each day. A feat we had achieved only 5 days in CBH's 88-year history.

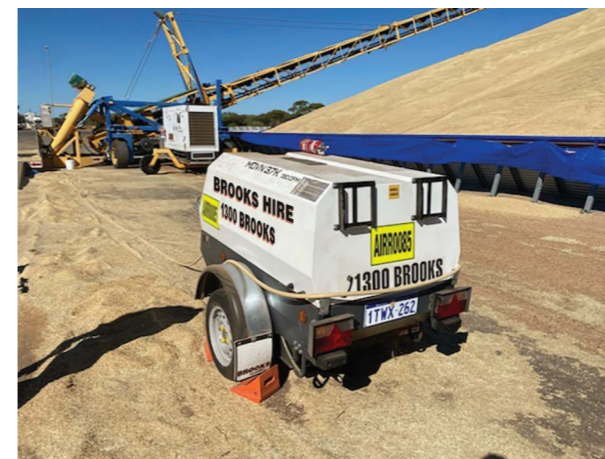
"Growers across WA need to be congratulated for their innovation and resilience in not only growing this magnificent crop but their ability to strip it at a record pace with their significant investment in modern technology and machinery.

"Although this put significant pressure on our sites, the preparation and efforts of our employees allowed CBH to keep up with the pace at which the growers were harvesting," Mr Daw said.

"I'd like to congratulate and thank everyone involved with this year's record-breaking crop, including growers, the CBH team, contractors, transporters, their families, and employees, for their tireless effort, patience, and resilience."

"The next challenge is moving the significant amount of grain received through the network and shipping it to our global customers. The Western Australian grain rail and road network will be at peak capacity through the whole year as we move grain to port."

The Site Services department at Brooks Hire proudly supplied onsite equipment to CBH as a part of their Harvest project. Generators, air compressors, skid steers, light towers, portable showers and tanks were delivered to various sites across WA where they remained for up to 4 months as a part of the Harvest project.



New Kwinana Fertiliser Storage Facility.

At the beginning of 2022, CBH Group announced that construction has commenced at its new granular and liquid fertiliser UREA Ammonium Nitrate (UAN) storage facility, located adjacent to the Kwinana Grain Terminal. The milestone is an exciting step towards delivering significant benefits to Western Australian growers.

Overall, the 70,000m2 development includes the construction of:

- A UAN ship unloading and transfer pipeline, which runs along the existing Kwinana Grain Terminal jetty.
- Approximately 55,000 tonnes of granular fertiliser storage in a new warehouse.
- 32,000 tonnes of UAN storage in two 16,000 tonne storage tanks, and administration office, landscaping, and security.

This new phase of growth will see the business enter the liquid fertiliser market for the first time, and expand its granular fertiliser. It is expected the facility will provide consistency of supply and deliver on CBH's strategy to reduce on-farm input costs for Western Australian grain growers.

CBH's Head of Fertiliser, David Pritchard was excited about the opportunities presented by the development. "We've seen demand for fertiliser, particularly UAN, grow exponentially in recent years, with the existing market struggling to keep pace during key times," said Mr Pritchard.



Photo: CBH website

"This new facility will enable us to bring surety of supply to growers, and the efficiencies gained through leveraging CBH's supply chain will be passed along to growers, bringing further competitiveness to the market," Mr Pritchard went on to explain.

The facility has been designed to provide for further expansion opportunities in the future, enabling the business to expand with the continually increasing WA grower demand for CBH fertiliser. Kerman Contracting has been awarded the project construction contract which is expected to be completed in 2023.

Supporting The Farming Community.

Australian summers present a particularly challenging time for farmers with bushfires impacting communities across many regions.

This bushfire season, CBH was pleased to assist the Farmers Across Borders convoy, which travelled from Esperance to Corrigin with 15 semi-trailer loads of hay onboard. An additional three trucks arrived from surrounding communities, bringing the total to 18 trucks. Farmers across borders distributed care packages from local Condinup families to those directly impacted by the fires.

CBH was also proud to support the Shires of Corrigin and Bruce Rock in hosting their community events in February. These events were an opportunity to thank volunteers while providing impacted growers and communities with some well-earned downtime.



Photo: CBH website

Engineering The Future

The Story of Contatore Engineering

There is a long history between Brooks and Contatore that started back in the days of Eneabba. Since that time, Contatore Engineering has steadily grown to cement itself as a highly regarded company built on the back of hard work and quality products. We caught up with founder, Ernie Contatore for a chat about his road to success.

Like Brooks Hire, Contatore Engineering is an Australian owned and operated success story. Can you tell us how it all began?

I migrated from Italy and began my working life at Johns Engineering, progressing from apprentice to managing the workshop.

My brother and I knew we had the capabilities to open a business of our own, so we bought Contatore Engineering into fruition with the vision of establishing a better life for our family and with the goal of developing and manufacturing products that were of a high quality and standard to the market.

In 1990, we occupied our first office which was a small unit at Anvil way, Welshpool. As the business grew, we moved into an additional unit, and then another, until we eventually looked at buying land.

The move was made to our current premises, an 11,387sqm lot located at 97 Radium Street, in the heart of Welshpool, in 1996.

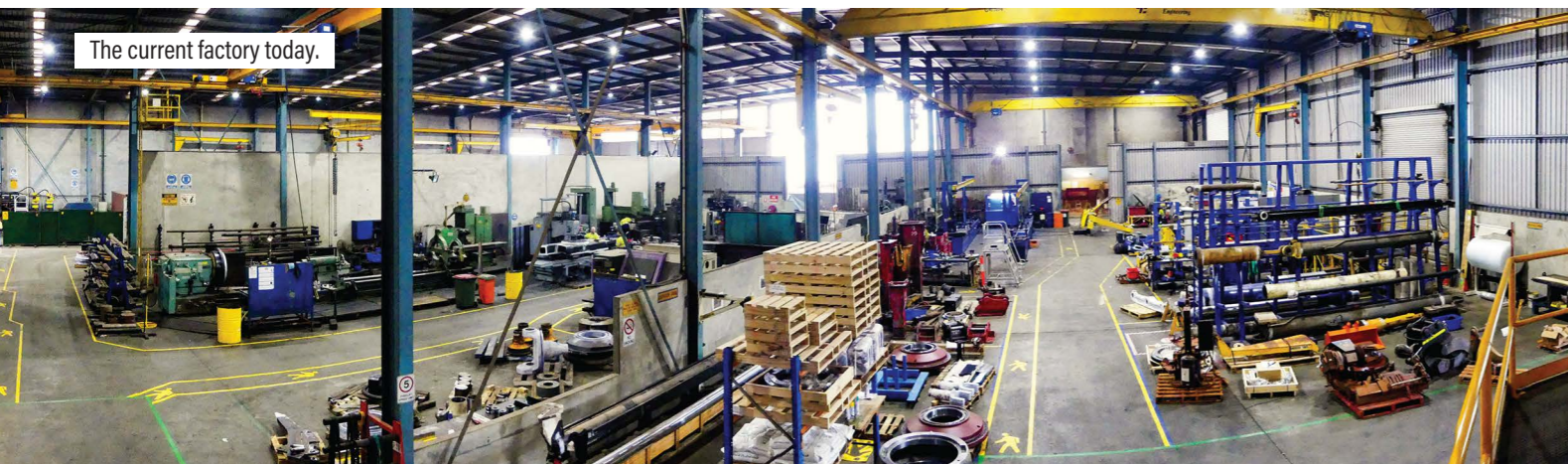


The Contatore family building their current factory.

We were determined to see the business succeed which led us to manufacture our custom, purpose-built factory ourselves. I had my dad, brother, son-in laws', and father-in-laws' all working together alongside Frank and I to build the factory - which to this day has evolved to remain a modern, high performance workshop. That is something we are all extremely proud of.

When you've been in business for such a long time, there are bound to be a few bumps along the way. What has been the most challenging time for Contatore Engineering?

Starting with no money or very little money was the hardest part. For the first few years, Frank and I didn't even take wages, and that was tough. Like all other businesses, we experienced downturns in work in line with Economic activity, which was disheartening at times, but it was during these periods that plans had to be put in place and strategies implemented which ultimately strengthened the business overall. Difficult times often teach you great lessons - I think that by beginning with nothing, knowing what it's like to struggle a bit, made us much more appreciative of what we have managed to build. The Coronavirus pandemic has been a new unexpected challenge, especially in managing staff, but the business and team has taken it all in their stride.



The current factory today.

What have been your greatest highlights and achievements as a company?

Looking back, while it has been rewarding to meet business goals, the main thing that stands out, is the loyalty we have experienced from our clients, suppliers and staff. These relationships mean so much to me and it's a special feeling to know how supported the business is and to recognise the people that have stayed with us since our very beginning.

It's an age old saying, 'treat others how you want to be treated'; - yet this is something I have strived for everyday by always approaching work with sincerity, honesty and above all loyalty to our many valued clients, and we have been so fortunate to experience this in return.

Now being in business for over 30 years and having a team of over 50 people, I am proud of what the business has become and stands for. For example, seeing apprentices start with me in the early years that are still with me today is something that I think speaks about our culture.

Having the means to support our staff, the ability to improve and innovate on our current offerings, and the opportunity to work for major mining companies, suppliers and hire companies, such as Brooks, are all major achievements in our eyes.

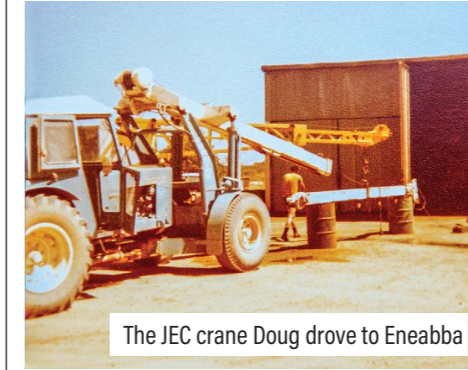
Can you tell us a bit about the products and services that Contatore Engineering offers?

Contatore is established as a reputable manufacturer, repairer and supplier of earthmoving products to the mining and earthmoving industries. The workshop houses fabrication, machining, fitting and painting departments.

We offer hire or buy options; some of our products include Rock Breakers, Buckets, Mini Excavator Buckets, Crane Jibs, Forks, Quick Hitches, Grabs, and much more. After many years of innovation and feedback, we can now also say we have one of the safest Tyre Handlers available on the market.

You and Doug Brooks have a long standing working relationship. How did that begin?

I first met Doug when he purchased a JEC crane from Johns Engineering in 1982. I was working there at the time, and I'll never forget when Doug decided he would drive the crane back to Eneabba from Kewdale himself - it was a very dangerous crane to drive on the road, not to mention a grueling 13 hour trip.



The JEC crane Doug drove to Eneabba

I told him, "whatever you do; don't take your foot off the accelerator". During his journey he almost went off the road, but luckily with my advice he was able to steer back to safety. Doug tells the story better. This was the start of our long friendship and professional relationship.

I truly admired Doug's determination. It has been wonderful to see Brooks go from strength to strength, from knowing Doug in those early days then having the honour to celebrate the success of Brooks at their 40th Anniversary. I enjoy being a small part of the Brooks story in helping build that first crane Doug bought from Johns Engineering - we've had a great relationship ever since.

How has your business shaped in recent years, and where do you see your business in 5 years from now?

The business has definitely changed over the years and this has been from a direct result of not only my personal goals and vision for the business, but also the need to remain competitive in keeping up with the changing demands and requirements of the industry we are in.

In terms of where I see the business in the next 5 years, I hope that we are still exploring new ideas along with continuing to fine tune and develop our product range. I know that my team will remain committed on continuing to offer our customers a great, high quality product and service not only in manufacturing new product, but also in the after sales services which is really important to me.

My dream when I started the business all those years ago was for my family to be involved and to grow along with the Contatore Engineering name.

"I am very fortunate to have several members of my family work with me and that to me is one of my greatest achievements I am most proud of."

ERNIE CONTATORE

I have seen their hard work and dedication take the business from strength to strength, and I am extremely proud of them - all in all, I am excited for what the future will bring for Contatore Engineering.



The Contatore Engineering team today.

Masters Of Their Field

Pirone Builders Built On Quality

At the end of 2021, Perth based Pirone Builders were recognised by the Master Builders Association for 40 years of continuous membership. We spoke to Director Adrian Pirone about the company and their long sustaining success.



The name 'Pirone' has become well renowned in the Perth building landscape. Can you tell us about your company structure and background?

The company was founded by my parents, Mario and Carmel Pirone, back in the early 70's in Geraldton, Western Australia. I joined the business in 1983. We are a family run business with a truly hands-on approach. All of our projects are closely managed by myself, with the help of my expert team. Today our team consist of around 10 full-time staff including administration, project management, estimating and site supervision personnel. Our key staff are highly experienced and have embraced our 'Built on Quality' ethos.

What is it about Pirone Builders that differentiates you from other builders?

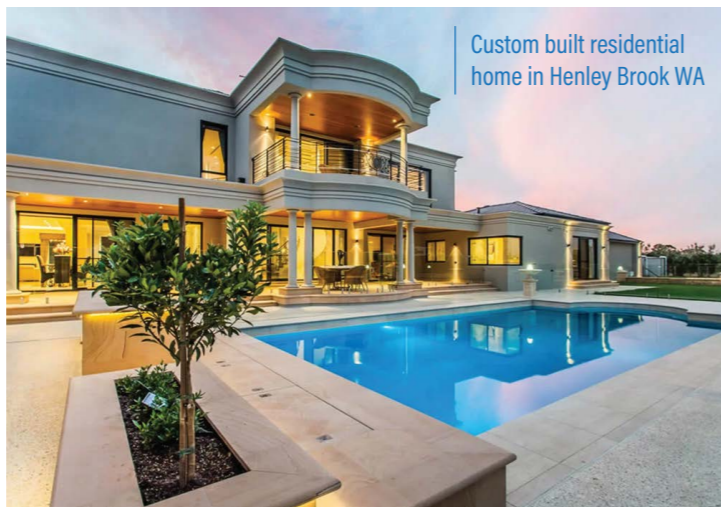
Each year Pirone Builders build only a selection of luxury homes, ensuring each home is completed to the highest standards, with exceptional attention to detail. That's the Pirone builders difference. Although most well known as one of Perth's best luxury home builders, Pirone Builders also have extensive experience in commercial building projects.

Our commercial building experience includes office complexes, factory units, shopping centres, medical centres, warehouses and more. With our personal involvement in all projects, we ensure that projects are delivered on time and on budget and are completed to the highest quality standards.

How has sustainability changed the building industry over the years?

Sustainability is just one challenge for the complex construction industry which also wrestles with tighter regulations on health and safety and sustainability. There is always a battle between design flair, constructability, efficiency, and costs.

There are 3 key factors which have influenced the way we do business in the construction industry. Cost control, government regulations and environmental protection. Increased scrutiny on building projects as a result of an increase in government regulations is making design more challenging, and ultimately more costly. Controlling costs is becoming more difficult with the requirement for more energy efficient design and the inclusion of more energy efficient building materials.



Pirone Builders offer both residential, and commercial building services. What has been your favourite residential project to work on so far?

I wouldn't say there is any one standout home. We have built a number of luxury homes in all of Perth's most prestigious suburbs, with each of my top- 10 most amazing homes having its own unique and interesting aspects and design flair. We look forward with excitement at the opportunity to build more of these types of homes.

Which commercial project are you most proud of and why?

Pirone builders were recent winners of the Master Builders' 2020 Excellence in Construction award for the Unios Headquarters in Wangara.

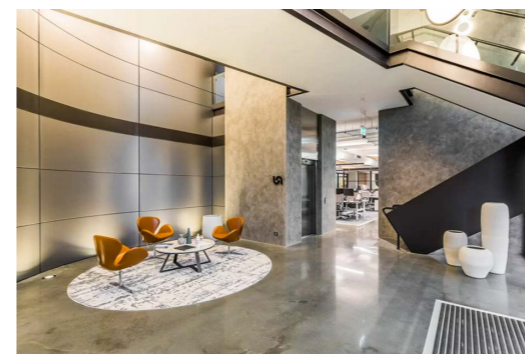
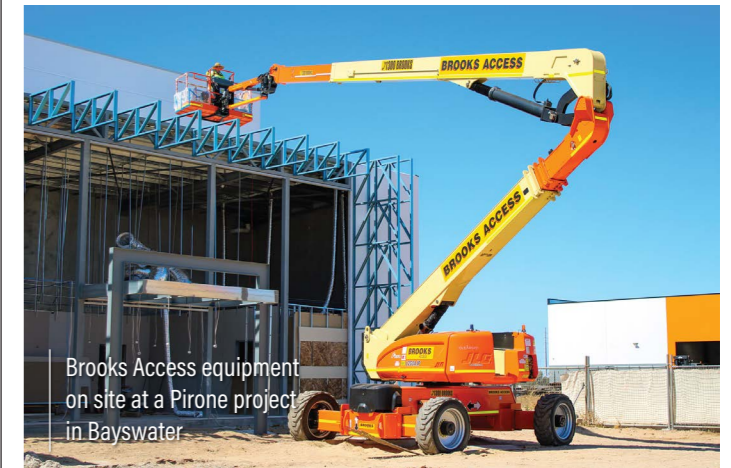
Unios are an up-market lighting design and distribution company. This hi-spec Office/Showroom/Warehouse project incorporated many of the features you would expect to find in a luxury home. This included burnished concrete floors over 2 levels of showroom office, a state-of-the-art audio visual package, extensive cabinetry and for something really different, basketball half-court, complete with sprung timber flooring and timber amphitheatre seating for 40 spectators.

We were proud to be recognised for our outstanding craftsmanship executed with this exceptional building.

Have you got any projects in the pipeline that you'd like to tell us about?

We are very excited to be commencing as of January 2022 a new headquarters for Enviropipes. This project comprises over 7000sqm of combined office/warehouse space with striking facade treatments and a quality internal office fit-out. We are continuously working on Design & Construct projects, for local and national stakeholders.

There's a reason that certain companies are able to sustain continued growth over a long period of time, and Pirone Builders are a prime example. Not only is their work of outstanding quality, there is also a commitment to customer satisfaction that goes above and beyond. We know that Pirone will be a name that continues to flourish in Perth for many years to come.



From The Ground Up

Hera Engineering Goes Sky High

Subiaco-based Hera Engineering has come a long way from its humble beginning in 2015 when founder and managing director Matteo Tirapelle bankrolled the company with his personal savings to get it off the ground – and within a few months clinched his first \$100 million project, working on the WA Museum Boola Bardip. Since then, Hera has completed 700 projects, most of them in Western Australia, which Matteo calls home after immigrating from Italy in 2007 in search of the best wind-surfing beaches in the world. We asked him to tell us about his company, which is named after the Greek goddess of women, and how it's made a mark in a traditionally conservative industry dominated by big-name players.

Hera Engineering is a relatively new company that's succeeded in a tough market and kept working through the pandemic. What has it taken to get this far?

Hera launched in a depressed market that was not conducive to a new, unproven company's success and has steadily grown to 25 staff over the past six years, becoming the largest building structural consultancy in WA. The company has only thrived because it challenged the status quo by offering smarter engineering solutions that focused on creativity and innovation, resulting in buildings with fewer materials that are more economical to construct. We spend twice as much time on the initial design concept than what's traditionally been done and have developed customised software in-house to take ideas to the next level.



300 George Street, Brisbane (82 levels, 264m tall). Award-winning project.

Several new projects got off the ground during the pandemic, including Epsilon Tower on the Gold Coast (the fourth tallest building in the city) and White Sands twin towers in Scarborough. A highlight during this time has been the opening of the WA Museum Boola Bardip, a landmark project for which we were handpicked by Multiplex in 2016 to engineer the façade and structural steel elements designed by international architect OMA.

How is your approach different from other engineering companies?

I've created an outside-the-square engineering company with a focus on creative design, resulting in more innovative and eco-conscious buildings. One of Hera's main differences compared with other consultants is that we think as a builder and work directly with sub-contractors on site to streamline the whole process because the reality is that engineers have traditionally preferred to stay in the office and not get their hands dirty.

Our commitment to developers, architects and builders who need to cost projects and meet deadlines is simple: promise and deliver.

Hera always has the math to prove our calculations are correct, ensuring if a job tender specifies 1000 tonnes of steel, that's what the final amount will be. Our commitment to QA/QC is second to none. Hera is ISO certified, which means our practices run to international standards. Not many companies of this size have this type of accreditation. There have been a series of high-profile structural failures in Australia that have driven insurance costs high. Hera has never had an insurance claim since we started because our culture of excellence and accountability drives what we do.

Can you give us a couple of examples of your "outside-the-square" engineering solutions?

One Subiaco, which is currently under construction on the former Subiaco Pavilion site, is a clear example of the success of this approach. The project had been financially unfeasible for decades, so the Blackburne Group approached us for a solution to achieve an economical structure. We went back to the drawing board and commenced an intensive coordination process with the architect to rationalise the structure so it would be successful without compromising Blackburne's apartment layout. We adopted advanced construction methodologies to accelerate the project. This involved extensive use of jump form, pre-fabrication and post-tensioned slabs.

In 2019, Fini Group approached us to troubleshoot the Rechabite Hall redevelopment in Northbridge, which was already halfway through the project and well over budget. The main cost overrun had been caused by an incorrect approach to the seismic retrofit of the landmark heritage structure that's one of the few remaining buildings by architect Edwin Summerhayes. Our solution, in part, was to use a carbon-fibre reinforcement for the existing framework -- a familiar concept in Europe -- that did not require any external modifications or shear walls, which meant the project was completed in the original time frame with major cost savings.

Sustainability is key to Australia's future. How is Hera reducing the impact of industry on the environment?

In WA's concrete-based industry, I advocate for the use of more eco-friendly materials like timber because it has half the emissions of steel and concrete – and is, of course, lighter. An example is the Leadlight Hotel that sits directly over the Northbridge Tunnel, which has very strict load limits and typically allows a maximum construction height of three storeys. To maximise the benefit to the developer, we proposed a 10-storey lightweight mass timber structure, which had not previously been considered, to allow development approvals to proceed. It's been colossal step for more sustainable construction in Perth.

Using timber, again, Hera's six-storey office block in Josephson Street, Fremantle, is entirely fabricated from cross-laminated and Glulam beams, which is a first, resulting in half the CO2 emission of concrete and steel.

Another example of our sustainable engineering approach is Brisbane's The One, where we took six months off the construction time and saved \$20 million in costs. In the process, there were 2000 fewer concrete trucks on the road and 3000 fewer deliveries of reinforced steel to the building site, so the whole community benefited.

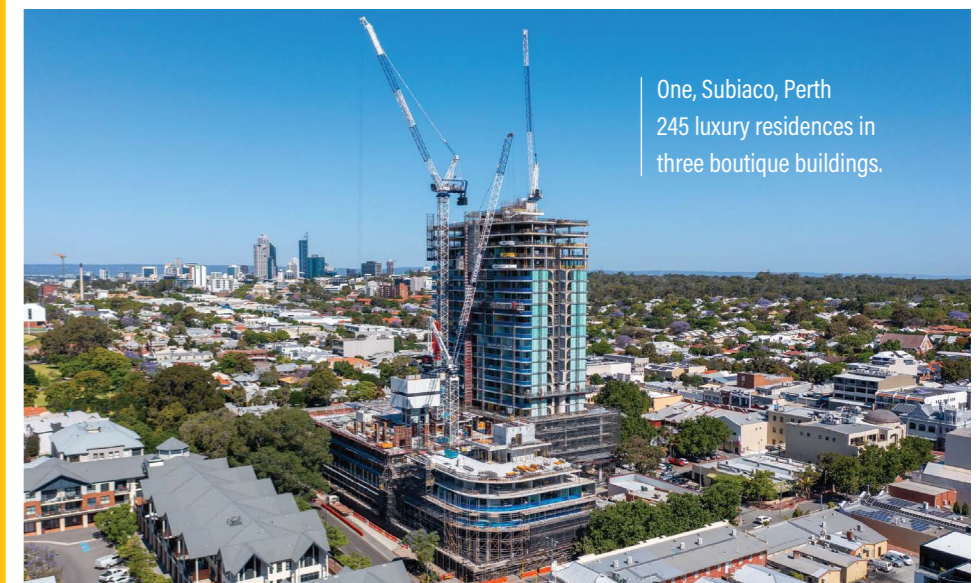
Where do you see your company in the next 5-10 years?

Hera is currently working on more than 50 projects, including 40 in WA and 10 in Queensland. Growth is expected to continue over the next five-10 years as we consolidate our reputation as an engineering firm specialising in alternative structural systems that result in cost savings and reduced construction times. We expect to keep expanding on the East Coast and plan to open an office in Sydney in the next three years. We're also expanding our transport portfolio with the Lakelands Train Station, which is part of the WA Government's METRONET project and a natural progression for us from the major station upgrades we've already done, namely the Perth Underground, Elizabeth Quay and Claremont. One of our goals is to innovate in the infrastructure sector where engineering is unnecessarily conservative.



Key projects over the past seven years

- 2015 Cirque Apartments, Applecross (20 levels). Award-winning project.
- 2016 WA Museum Boola Bardip. Award-winning project.
- 2016 300 George Street office, Brisbane (41 levels, 200m tall). Award-winning project.
- 2017 The One, Brisbane (82 levels, 264m tall). Tallest tower in Brisbane. Award-winning project.
- 2018 High Society, Canberra (30 levels, 120m tall). Tallest tower in the ACT.
- 2018 The Switch, Perth (40 levels, 124m). Tallest residential building in WA.
- 2018 Epsilon Tower, Broadbeach (64 levels, 230m tall).
- 2020 One, Subiaco. 245 luxury residences in three boutique buildings with dining, retail and market facilities.
- 2020 Queen Wharf, Brisbane. \$3.4 billion project with multiple towers. HERA is working on part of the project as there are multiple engineers involved.
- 2021 The Grove, on the site of the Sundowner Hostel, wedged between Claremont, Cottesloe and Peppermint Grove. \$300m project and the largest residential development in WA.



One, Subiaco, Perth 245 luxury residences in three boutique buildings.



Brooks Equipment General Manager, Nathan Fenemer with happy customers, Alan and Annette Footer.

Sany Sales Lead The Way

Brooks Equipment Makes Sany Number 1.

The stats have been released and things are looking sunny for Sany in Western Australia. Since taking over the WA Dealership for Sany, Brooks Equipment has achieved a whopping 112.5% increase in Sany excavator sales from January 2021, to January 2022.

With 17 excavators sold in the month of January alone, Sany is now the top selling brand in the whole of Western Australia, outstripping major competitors such as Caterpillar, Komatsu, Volvo, Hitachi, and Hyundai. Not only that, Brooks Equipment's impressive sales rate has placed them as the top Sany Dealership in the whole of Australia.

"Overwhelmingly, people are seeing the true value on offer by purchasing a Sany," said Brooks Equipment General Manager, Nathan Fenemer. "Not only are Sany machines of world class standard, but you get the full backing of Brooks' service and parts with every sale."

"I usually buy products based on the dealership and the backup service, rather than the brand name, but in this case Brooks and Sany are both great brands." MIKE BEANLAND, CUSTOMER



Mike Beanland with his new Sany excavator in Northcliffe, WA

One such customer that appreciated the value was Mike Beanland from Northcliffe in the south west region of WA. Mike recently purchased a Sany SY80U 8.8 tonne excavator with a quick hitch, GP bucket, batter bucket, trenching bucket, and grab attachments, and he couldn't stop raving about his new toy.

"I could get a brand new Sany for the same price that some other brands were selling second hand, beaten up, and not as good," explained Mike. But the price wasn't the only reason that Mike chose to buy a Sany.

"Sany was chosen mostly because of the backup of Brooks," he went on to explain. "I usually buy products based on the dealership and the backup service, rather than the brand name, but in this case Brooks and Sany are both great brands."

Mike purchased the excavator for land clearing, mulching an overgrown block of land, moving logs around the forest, making some small dams, trenching, and everything he needs on his 2 x 100 acre caravan parks.

Of his experience with Brooks Equipment, Mike remarked, "The level of service provided has been excellent from start to finish. I was treated like a friend that they were helping out, not 'just' a client. Nathan could not have been more helpful."

Mike isn't alone when it comes to being a happy customer. Alan and Annette Footer were equally as thrilled with their SY35U 3.86 tonne excavator. The mini excavator features a fully enclosed cab and an independently developed intelligent control system that matches pump output to available engine power for greater hydraulic system efficiency and lower fuel consumption.

WA Excavator Sales - January 2022

SANY	17
Caterpillar	12
Kubota	11
Hitachi	8
Komatsu	5
Kobelco	5
Leibherr	5
Yanmar	4
Bobcat	4
Sumitomo	3
XCMG	2
Volvo	1
Hyundai	1
John Deere	1
Case	1
Toyota	0
Doosan	0
JCB	0

With plenty of stock on the showroom floor, the happy couple was able to take home their new purchase straight away with no wait time for delivery. They will be using the mini digger to assist with the building of their new 'forever' home. "We can't wait to start," said Annette. "Thanks for all your help Nathan."

It's not just the smaller sized excavators that are flying out the door. Westmore Corp in Perth purchased a brand new SY215C 22 tonne excavator which they are using with one of their own claw attachments.



Cameron, Supervisor at Westmore Corp and Nathan Fenemer

Brooks Equipment has Sany excavators ranging in size from 1.6 tonnes right up to 50 tonnes ready to sell right now. There is also a variety of attachments to choose from and a full warehouse of genuine Sany parts.

Whilst Sany is still considered to be a relatively new brand in Australia, internationally it is the number one selling brand for excavators worldwide. Sany takes their key components from all of the best suppliers around the globe to build high quality machines that meet all international specifications, making it a truly global brand. Brooks Equipment is excited about the future of Sany in Australia.

SANY A Global Brand



The Only Way Is Up!

A Milestone For Brooks Access

Brooks Access has recently celebrated their first year of operation! The access division was created in early 2021 when our existing hire customers started requesting access equipment. In that time, the company has grown to obtain a fleet of over 60 brand new access machines, comprising of scissor lifts, boom lifts, telehandlers, and forklifts. There are a further 100 machines on order and the equipment is readily available all over WA, NT, NSW, and QLD.

In addition to hiring access equipment, Brooks Access is now offering their customers the opportunity to purchase machinery.

"We have a range of stock on the showroom floor ready to sell right now," explained General Manager, Claire Harrison, "plus, our customers have the option to upgrade their purchase to include two years fixed price servicing for just \$1000 +GST. That's an added benefit of choosing Brooks that you won't find with other suppliers."



Swan Fabricators collecting their new Genie GS-1432 Scissor Lift

"I chose this equipment because it's a known brand. If hire companies use them, they've already passed the pub test."

— GEOFF HODGES, MANAGING DIRECTOR, SWAN FABRICATORS PTY LTD

Access equipment sales have already started taking off, with five brand new machines being sold to happy customers in the first quarter of 2022.

Geoff Hodges, Managing Director at Swan Fabricators was pleased with his purchase of a Genie GS-1432 scissor lift. Being in the business of steel fabrication, Swan Fabricators often have to assemble unusual equipment requiring the height and manoeuvrability of an elevated work platform for concrete floor operations.

Of his dealings with Brooks Access, Geoff remarked, "Claire was pleasant and informative, and Luke being a mechanic, was the full bottle on the machine's capabilities, and limitations." Another reason Swan Fabrications chose to use Brooks Access is that the parts and servicing are local. "Our company supports local where possible," said Geoff. "I'd highly recommend Brooks Access."

Other machine sales include two Genie GS1932 scissor lifts, a Snorkel 2.5T telehandler, and a Snorkel Push 8 Pro scissor lift.

On top of the growing number of sales this year, Brooks Access has also achieved a utilisation rate of 90% in the hire division, which is a very enviable position to be in.

"Over the course of just one year, Brooks Access has successfully inserted itself into a very competitive industry," Claire Harrison stated. "People recognise the name Brooks and trust us to stand by our products, and our service."



Service Technician, Luke Johnston out on site

It's A Win Win!



To say that 2021 was a big year for Brooks would be a massive understatement. Straight off the back of winning the 2021 RISE Large Business of the Year Award, Brooks Hire has also been awarded '2021 Hire Company of the Year' at the Australian Earthmoving Awards.

Organised by Australian Earthmoving Magazine, the annual awards recognise the outstanding achievement in ten different earthmoving categories. Brooks Hire was nominated for the Hire Company of Year Award by quite a few anonymous customers.

"This is traditionally one of the most hotly contested categories, so you are clearly doing a lot of things right," said Wayne Keen, Owner Publisher of Australian Earthmoving Magazine.

"We just try to do the right thing all the way down the line," said Doug Brooks. "You try to give the customer good value for money and that's what we've done over all the years."



New Brooks Branch Set To Open



Lunch break at the Lobster Shack, Cervantes WA

Surprise, surprise! Doug and Roma have been on the road again, sourcing a location for our next Brooks branch. As per usual, they took their trusty caravan on the road to inspect the new property. Can you guess the location?

It's Geraldton! A coastal city, 424kms north of Perth in the Mid West region of WA. The new branch will service from Jurien Bay in the south, up to Exmouth in the north, and out to Mount Magnet in the east. Keep your eyes peeled for more details...



Setting up camp in Dongara

Just AdBlue

Love It Or Hate It, Here's Why AdBlue Is Here To Stay

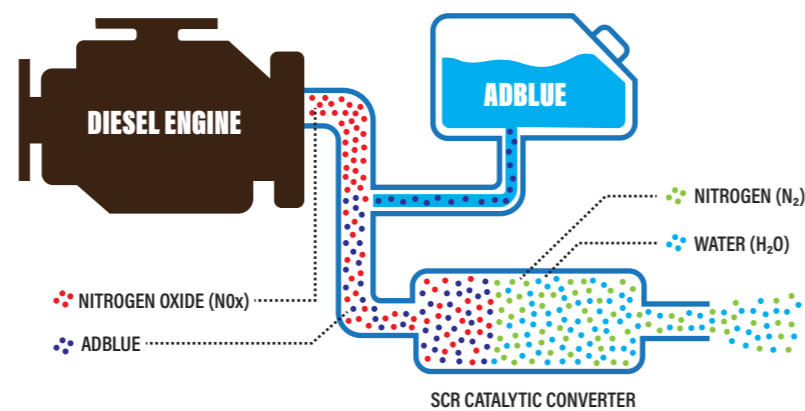
Adhering to tightening industry standards has become somewhat routine when working in the transport, mining, and construction sectors. With Australia's Heavy Duty Diesel Vehicles mandated by the Euro V emissions standards, all heavy vehicles manufactured from 1 January 2011 must adhere to the Australian Design Rules (ADR) performance standards; established to lower the harmful emissions produced by diesel operated vehicles.

Currently, emission standards for off-road diesel engines are unmandated in Australia, however, consideration of the country's environmental fate and continued developments within government to tighten emission laws, has seen companies such as Brooks Hire utilising technologies to lessen their noxious impact: enter AdBlue.

So, what is AdBlue?

AdBlue, the revolutionary product that lowers emissions in both light-duty and heavy-duty vehicles, is a urea-based Diesel Exhaust Fluid (DEF). When introduced to the Nitrogen Oxide (NOx) expelled by vehicles, a chemical reaction occurs, altering the particle makeup and transforming it into nitrogen and water.

This process takes place within the exhaust of the machine and is known as a Selective Catalytic Reduction (SCR) system. From the engine, NOx travels through to the exhaust, where the DEF is released into the SCR catalytic converter, chemically altering the particles before they re-enter the atmosphere.



With global emission laws tightening, and the domestic demand and price of imperative components of AdBlue rising in major production countries such as China, an Australian national shortage of urea was declared in late last year. This shortage has been temporarily solved with a production deal secured in December of 2021, between local Queensland fertiliser producers, Incitec Pivot, and the Australian Federal Government.

Minister for Industry, Energy and Emissions Reduction, Angus Taylor, shared that, when 80% of Australia's urea stock was previously imported from China, this deal has seen approximately 75% of Australia's annual supply requirement of urea, produced in this plant in a single week.

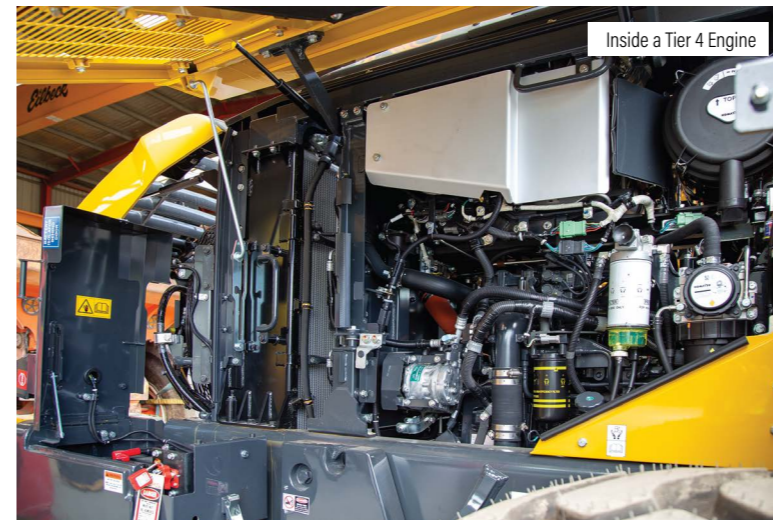
Adoption Within The Hire Industry

If the use of AdBlue is as beneficial as it appears – and has factually been proven to be – why has its adoption within the equipment hire industry not taken quicker? To put it frankly, this mighty beast takes some understanding to get right. When utilised correctly, the environmental gains are incredibly and undeniably effective, however, there are instances where its improper use has resulted in major machinery hiccups.

Brooks Hire Workshop Manager, Mitchell Foxon, explains: "If a user wasn't trained or advised of the correct flushing procedures for AdBlue after use, product crystallisation can result within the delivery lines, with the potential to cause major breakdowns."

This point is not to be muddled with a dampened opinion of AdBlue as an effective solution in lessening the production of harmful emissions; rather, a reminder to properly research the correct application of the substance and source trained staff to manage it, before using it in your machines.

Machines that use AdBlue can be identified as having Tier 4 engines. Tier 4 refers to the emission standards requirement for off-highway diesel engines. This requirement regulates the amount of particulate matter (PM), or black soot, and nitrogen oxides (NOx) that can be emitted from an off-highway diesel engine.



The Brooks Hire fleet has a fairly even mix of Tier 4 equipment, and standard equipment. As environmental standards become stricter, we will start to see a clear lean towards Tier 4 engines in our fleet. This will be for environmental reasons, and also due to a lack of availability of non-compliant machines.

"Brooks are committed to a greener Australia through the introduction of AdBlue machines in our fleet." MITCHELL FOXON, BROOKS HIRE WORKSHOP MANAGER



Where do we stand?

Although Incitec's urea production has deterred shortages of the substance, their planned closure of the Queensland production plant at the end of 2022 due to unmanageable gas prices, called for answers to growing DEF demand.

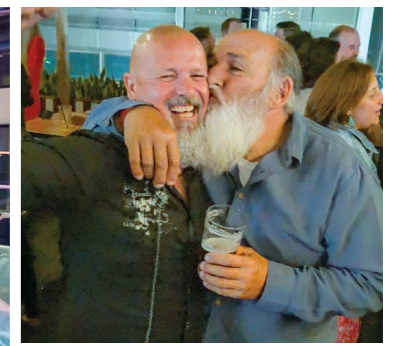
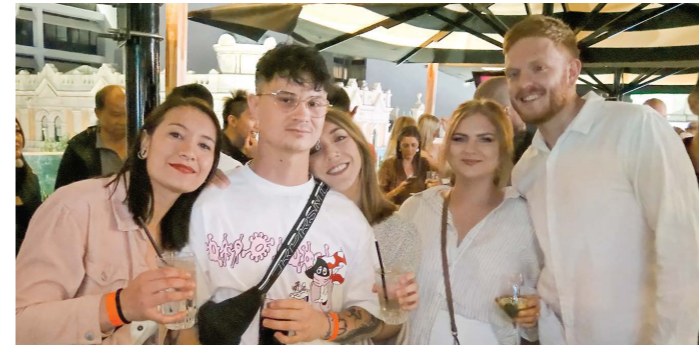
Dan Tehan, Minister for Trade, Tourism and Investment, indicated that this decision is now being reviewed by the company: "We've been able to work through with [Incitec Pivot], a way to enable them to keep manufacturing, which should provide us with that consistency of supply that we need". In the meantime, a trade deal with Indonesia has seen 5,000 tonnes of urea secured in January of 2022, covering the country's stock requirements for approximately a month; working with local producers to bring the AdBlue shortage to an end.

With the target set for Australia to progress to the Euro 6/VI standards by 2027 – which many countries such as the United Kingdom, Japan, and China, have already adopted, or those equivalent to – integration of SCR systems will continue increasing in the construction, mining, and civil industries.

For companies such as Brooks Hire, whose sights are set on leading with greener initiatives, the integration of greener operating machines will continue, whilst still providing a fleet that delivers should resources of DEFs ever run low in the future.

Foxon summarises that "Brooks are committed to a greener Australia through the introduction of AdBlue machines in our fleet. We also recognise global shortages of the AdBlue product so still have high-quality standard machines available when necessary."

Christmas Celebrations 2021

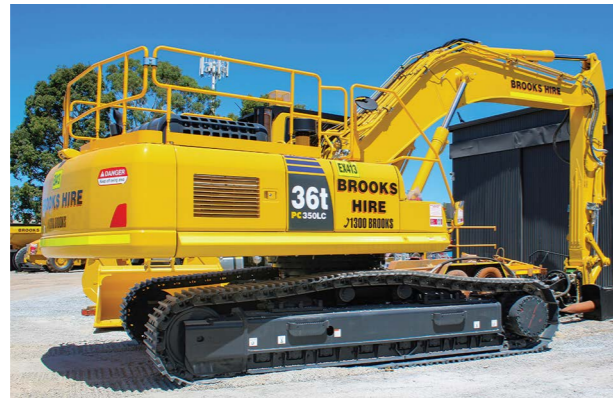


New Machines

THE BROOKS FLEET OF EQUIPMENT

BROOKS HIRE

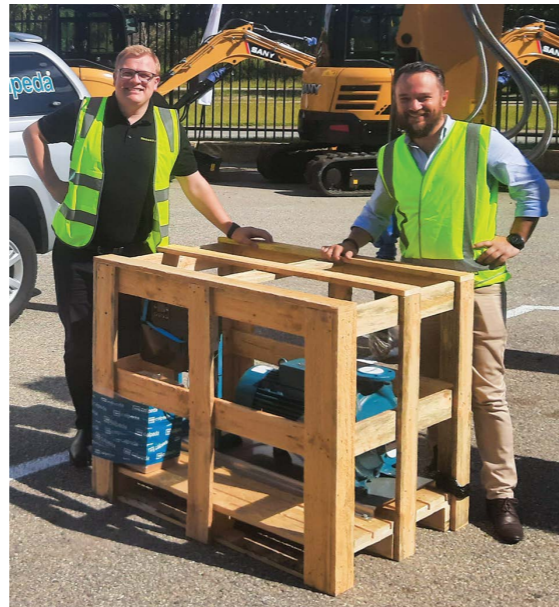
With the new Site Services division hitting the ground running, we've been busy purchasing a whole new fleet of light towers, generators, compressors, pumps, and portable buildings. We've also added light vehicle hire to our list of equipment, so you'll see our mini vans and utes out and about as well. Of course, we've also added a heap of new excavators, loaders, rollers, and all of the big stuff to keep our heavy fleet modern and new.



BROOKS TRANSPORT

◀ New Volvo Prime Mover

Brooks Transport's WA department took delivery of this brand new Volvo FH13 6x4 prime mover with sleeper cab in March.



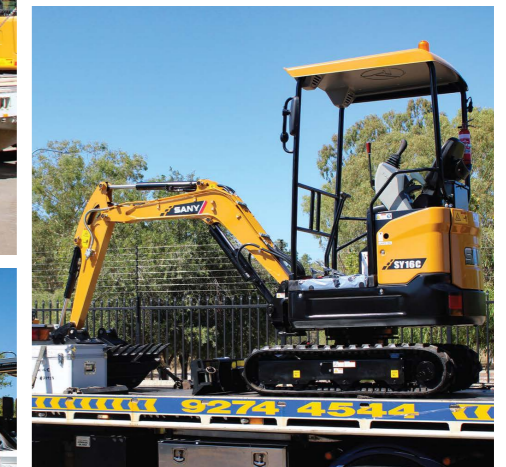
BROOKS ACCESS

In one short year, Brooks Access has already added 60 machines to their access fleet, with another 100 machines on order. There's been a good range of telehandlers, forklifts, scissor lifts, and boom lifts. With some machines going to the hire fleet, and others being offered for sale, there's certainly been a lot of activity in the Brooks Access yard.



BROOKS EQUIPMENT

With the demand for Sany excavators rising steadily, Brooks Equipment keeps bringing them in. It's not just the Sany equipment that we've been investing in. We've also been stocking up on Genmac light towers, generators, and Italdem rock breakers. Take a look at a few of our new machines for sale.



Welcome Aboard

Craig Gordon



What was your first job:
Brickies Labourer

What is your role at Brooks:
Safety Officer - Perth WA

What achievement in life are you most proud of: Raising my two sons.

How would you describe yourself in 3 words: Independent, Tactile, and Scorpio

Where would we find you on the weekends:
Probably assisting at my boys' sporting teams.

What is something that you're really good at:
I'm more of a Jack of all trades than a master of one.

What is something that you're really bad at:
Keeping on top of the house cleaning.

If you could invite anybody to dinner (dead or alive), who would it be: Just my mates and their families, a lot are FIFO and it's hard to get everyone together at once.

You're going to a Super Hero party, who do you dress up as:
Batman

Favourite type of cake: Chocolate.

What song best sums up your life:
Do not know of one, but a go to song is Titanium by David Guetta.

Josephina Cockman



What was your first job:
Clerk for a finance company.

What is your role at Brooks:
Receptionist, Canning Vale WA.

What achievement in life are you most proud of:
My two children.

How would you describe yourself in 3 words: Loyal, Dependable, and Easy Going.

Where would we find you on the weekends:
Spending time with family and friends.

What is something that you're really good at: Making lasagne.

What is something that you're really bad at:
Parking my car, I always seem to park on an angle.

If you could invite anybody to dinner (dead or alive), who would it be: My parents who have both passed away.

Favourite type of cake: Baked cheesecake.

What is something that you're really good at:
Fishing.

What is something that you're really bad at:
Choosing a Netflix show.

If you could invite anybody to dinner (dead or alive), who would it be: David Attenborough.

You're going to a Super Hero party, who do you dress up as: Deadpool.

Favourite type of cake: Toblerone Cheesecake.

What song best sums up your life:
'Live It Up' by 360



Roy Sze

What was your first job: Marketing Assistant at Marketing Department in University.

What is your role at Brooks:
Part interpreter - Brooks Equipment, Perth WA.

What achievement in life are you most proud of: Competed in Asian Game in 2012.

How would you describe yourself in 3 words: Smile, Optimistic and People-oriented.

Where would we find you on the weekends:
Home or Swan River (on a kayak).

What is something that you're really good at: Sleep, Eat and Kayaking.

What is something that you're really bad at: Losing weight, lol.

If you could invite anybody to dinner (dead or alive), who would it be: My team and my partner.

You're going to a Super Hero party, who do you dress up as: Deadpool (it makes me look more handsome).

Favourite type of cake: Fruit Sponge Cake with cream.

What song best sums up your life:
"I Believe I Can Fly"

Debbie Ellul



What was your first job:
Registered Nurse.

What is your role at Brooks:
Receptionist (3 days a week) - Perth WA.

What achievement in life are you most proud of: Obtaining a role of Associate Charge Nurse of a surgical ward in my mid twenties.

How would you describe yourself in 3 words:
Fun, Bubbly, and Warm.

Where would we find you on the weekends:
Social setting with family or friends enjoying good food and laughs.

What is something that you're really good at:
Predicting who did it in movies from the beginning.

What is something that you're really bad at: Reading instructions on assembling new furniture or appliances lol.

If you could invite anybody to dinner (dead or alive), who would it be: Elvis Presley.

You're going to a Super Hero party, who do you dress up as:
Storm from X-Men as she can control the weather.

Favourite type of cake: Chocolate.

What song best sums up your life:
'Take Me Home Country Roads'

Dhanya Mariam



What was your first job:
Customer Service Associate at Allianz Cornhill Insurance.

What is your role at Brooks:
Hire Administrator - Perth, WA.

What achievement in life are you most proud of:
Family, career, friends, and good life.

How would you describe yourself in 3 words:
Genuine, Easygoing, and Optimistic.

Where would we find you on the weekends:
Mostly at home with my family.

What is something that you're really good at:
Cooking and baking.

What is something that you're really bad at: Sports.

If you could invite anybody to dinner (dead or alive), who would it be: Family and close friends.

You're going to a Super Hero party, who do you dress up as:
Black Widow.

Favourite type of cake: Anything that I bake is my favourite :)

What song best sums up your life:
'Affirmation' by Savage Garden

Jarryd Currie



What was your first job:
Apprentice Mechanic.

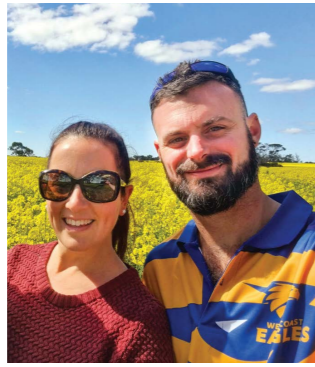
What is your role at Brooks:
Field Service Technician, Canning Vale WA.

What achievement in life are you most proud of: Raising my children.

How would you describe yourself in 3 words:
Happy, hardworking, self motivated.

Where would we find you on the weekends:
You will find me at the beach fishing.

Scott Squire



What was your first job:
Farm hand.

What is your role at Brooks:
Field Service - Bunbury WA

What achievement in life are you most proud of: My wife and four boys.

How would you describe yourself in 3 words:
Loyal, Trustworthy, and Energetic.

Where would we find you on the weekends: Camping.

What is something that you're really good at:
Being on time.

What is something that you're really bad at:
Staying awake while on the lounge.

If you could invite anybody to dinner (dead or alive), who would it be: Dad.

You're going to a Super Hero party, who do you dress up as:
Superman.

Favourite type of cake: Black Forest

What song best sums up your life:
Hooligan Hefs - SEND IT! (Timmy Trumpet Remix)

Melissa Donaldson



What was your first job:
A Kitchen Assistant at the Rest Home that my Mum worked in.

What is your role at Brooks:
Transport Scheduler - Perth WA.

What achievement in life are you most proud of:
Being a Mum to my beautiful daughter, Harper.

How would you describe yourself in 3 words:
Fun, Hard-working, and Persistent.

Where would we find you on the weekends: At the gym or playing softball and spending time with my daughter. If I was living near the snow again, I'd be snowboarding every weekend.

What is something that you're really good at: I like to think cooking, but being a Mum is most importantly.

What is something that you're really bad at: Not really sure.

If you could invite anybody to dinner (dead or alive), who would it be: Walt Disney. The world of Disney definitely brought a lot of joy to me as a child.

You're going to a Super Hero party, who do you dress up as:
My daughter said Mum should be Batgirl.

Favourite type of cake: Coffee Cake.

What song best sums up your life: 'Pick Me Up' by Gabby Barret

Ashton Yu



What was your first job: Sushi Chef.

What is your role at Brooks:
Accounts Administrator - Perth WA.

What achievement in life are you most proud of: Being married and home owner.

How would you describe yourself in 3 words:
Persistent, Considerate, Adaptable.

Where would we find you on the weekends:
Karrinyup, Church, Brunch places, or home.

What is something that you're really good at: Saving and budgeting.

What is something that you're really bad at:
Drawing.

If you could invite anybody to dinner (dead or alive), who would it be: My Grandpa.

You're going to a Super Hero party, who do you dress up as: Judge Dredd.

Favourite type of cake: Chocolate Lava Cake.

What song best sums up your life:
'Not Afraid' by Eminem

Gina Liew



What was your first job: Retail Assistant.

What is your role at Brooks:
Asset Administrator - Perth WA.

What achievement in life are you most proud of: Have my own house at the age of 22 and completed my uni in construction management.

How would you describe yourself in 3 words: Helpful, Positive, and Caring.

Where would we find you on the weekends:
Cafe or home.

What is something that you're really good at: Baking.

What is something that you're really bad at: Sport.

If you could invite anybody to dinner (dead or alive), who would it be: My family.

You're going to a Super Hero party, who do you dress up as: Black Widow.

Favourite type of cake: Strawberry Shortcake, or any sponge cake.

What song best sums up your life:
"Don't Worry Be Happy" by Bobby McFerrin

Nicole Yan



What was your first job:
Kitchenhand at KFC

What is your role at Brooks:
Accounts Administrator - Perth WA.

What achievement in life are you most proud of: Getting my Master in the UK.

How would you describe yourself in 3 words: Easygoing, Quiet, and Sensitive.

Where would we find you on the weekends: Home.

What is something that you're really good at: Proof reading, puzzles.

What is something that you're really bad at: Socialising.

If you could invite anybody to dinner (dead or alive), who would it be: My Mum.

You're going to a Super Hero party, who do you dress up as:
Black Widow.

Favourite type of cake: Pandan Chiffon Cake

What song best sums up your life: Ocean, my home town.

Jesse Unkauf



What was your first job:
Gymnastics Coach (trampoline specific).

What is your role at Brooks:
Field Service Mechanic - Melbourne, NSW.

What achievement in life are you most proud of:
Purchasing a house by 25.

How would you describe yourself in 3 words: Motivated, Passionate, Headstrong.

Where would we find you on the weekends:
Skatepark, tattoo shop, or down the coast.

What is something that you're really good at:
Skateboarding.

What is something that you're really bad at:
My handwriting is really horrible.

If you could invite anybody to dinner (dead or alive), who would it be: Steve Irwin for sure.

You're going to a Super Hero party, who do you dress up as:
Ironman? I'm not big on superhero movies but Black Sabbath plays a song called 'Ironman' so probably him.

Favourite type of cake: Icecream all the way.

What song best sums up your life:
'Something To Prove' by the Spermbirds

Brooke Longden



What was your first job:
Boost Juice.

What is your role at Brooks:
HR Officer - Perth WA.

What achievement in life are you most proud of: Travelling to over 30 countries.

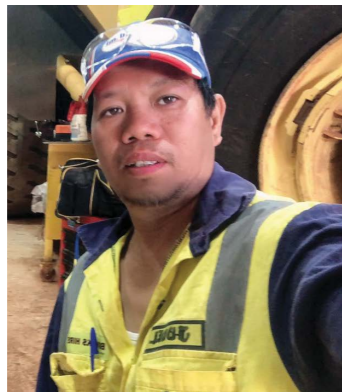
How would you describe yourself in 3 words:
Outgoing, Funny, and Passionate.

Where would we find you on the weekends:
Scarborough Beach and bars.

What is something that you're really good at: Quiz nights.

What song best sums up your life:
'Stranger Days' by Skeggs

Judel De Guzman



What was your first job:
Auto Electrician.

What is your role at Brooks:
Auto Electrician - Pilbara WA.

What achievement in life are you most proud of: Family and got my Australian citizenship.

How would you describe yourself in 3 words:
Honest, Hardworking, and Responsible.

Where would we find you on the weekends:
At home spending time with my family.

What is something that you're really good at:
Fault finding auto electrical and car aircon systems.

What is something that you're really bad at: Dancing.

If you could invite anybody to dinner (dead or alive), who would it be: My wife / kids, and my father.

You're going to a Super Hero party, who do you dress up as:
Superman.

Favourite type of cake: Cheesecake.

What song best sums up your life: 'Just As I Am' by Air Supply

Sophie Dinh-Campbell

What was your first job: Farmwork at the age of 10.

What is your role at Brooks: Hire Coordinator - Perth, WA.

What achievement in life are you most proud of:
Multiple things I'm proud of eg. marriage and financially secured.

How would you describe yourself in 3 words:
Honest, Integral, and Loyal.

Where would we find you on the weekends:
At the gym and restaurant.

What is something that you're really good at: Eating.

What is something that you're really bad at: Housework - hate it and refuse to do it. Hubby does it.

If you could invite anybody to dinner (dead or alive), who would it be: Hubby.

You're going to a Super Hero party, who do you dress up as:
Mortal Kombat character.

Favourite type of cake: Only like fruit.

Shan Schmidt

What was your first job: Unofficially - family farm work, Officially - McDonalds.

What is your role at Brooks: Admin Assistant - Dalby QLD.

What achievement in life are you most proud of: Changing career after 30, and persevering with the setbacks that created.

How would you describe yourself in 3 words:
Easygoing, Organised, and Empathetic.

Where would we find you on the weekends:
On the farm, usually doing BBQs or camp ovens with friends.

What is something that you're really good at: Listening.

What is something that you're really bad at:
Setting boundaries.

If you could invite anybody to dinner (dead or alive), who would it be: Elvis.

You're going to a Super Hero party, who do you dress up as:
The Hulk.

Favourite type of cake: Carrot (must have cream cheese icing).

What song best sums up your life: 'The Dance' - Garth Brooks.

Gamaliel Raniel



What was your first job:
Heavy Equipment Mechanic.

What is your role at Brooks:
Heavy Equipment Mechanic-
Newman WA.

What achievement in life are you most proud of:
When I finish my course.

How would you describe yourself in 3 words:
Hardworking, Resourceful, Honest.

Where would we find you on the weekends:
Mostly at home with my family.

What is something that you're really good at: Basketball.

What is something that you're really bad at: Bowling.

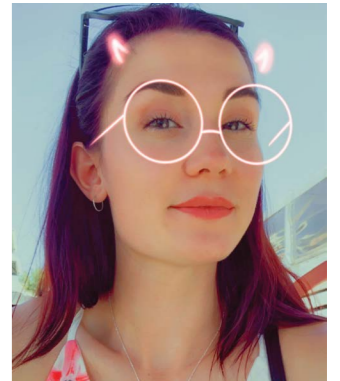
If you could invite anybody to dinner (dead or alive), who would it be: My parents.

You're going to a Super Hero party, who do you dress up as:
Superman.

Favourite type of cake: None.

What song best sums up your life:
'Don't Stop Believin' by Journey.

Monique Matesich



What was your first job:
McDonalds, ha ha.

What is your role at Brooks:
HR Administrator- Perth WA.

What achievement in life are you most proud of: Purchasing my first house back in 2018.

How would you describe yourself in 3 words:
Nice, Caring, and Funny.

Where would we find you on the weekends:
Working on my car, or playing with my foster kittens.

What is something that you're really good at: Unsure.

What is something that you're really bad at:
Deciding what to have for dinner.

If you could invite anybody to dinner (dead or alive), who would it be: One of my best friends, Darryl. She passed away from cancer xRIPx.

You're going to a Super Hero party, who do you dress up as:
Cat Woman.

Favourite type of cake: Jamaican Choc Cheesecake.

What song best sums up your life: 'Tokyo Drift'.



Stuart's Kitchen

Fantastic Noodles with Tuna

This edition, our Managing Director, Stuart Brooks has hijacked Vinny's Kitchen with his best recipe of all time, instant noodles. Enjoy!

Ingredients: 1 Fantastic Noodle Bowl, Boiling Water, 2 x 95gm Tins of tuna (whatever is on special).

Directions:

1. Peel lid back to the marked line and add sachet contents
2. Add boiling water until the noodles are covered. Reclose the lid.
3. Leave closed for 2-3 minutes.
4. Open the lid and drain excess liquid from noodles.
5. Drain liquid from tuna cans and add tuna to the noodles.
6. Stir thoroughly and enjoy.



The Puzzler Page



Spot the Difference

There are 10 differences between the photos below. See if you can find them all.



Word Solver

Find the 9 letter word using the letters in the grid, then try to make as many other words as you can. Words must be a minimum of 4 letters and must contain the middle letter. No proper nouns or plurals.
Good - 15 Words **Very Good** - 20 Words **Excellent** - 25 or more

U	N	G
P	E	D
G	L	U

Crossword

Across

- 1. Italian monk's title
- 4. Still to come
- 9. Extreme severity
- 14. Electrified bit
- 15. Marital antonym of "better"
- 16. Worship
- 17. Oldies evocation
- 19. Monsoon result, often
- 20. Kismet kink?
- 22. Parasite
- 23. Harris and Sullivan
- 24. Scuba supply
- 27. Flubs
- 28. Run up bills
- 31. Plot size, perhaps
- 32. ___ mater
- 33. Vacation car, usually
- 35. Show one's future?
- 40. Carol beginning
- 41. Comfort
- 42. School year division
- 43. Sells
- 45. First name in daredevilry
- 49. Spot to stop
- 50. ___ X
- 51. In need of freshening
- 52. Lennon hit appropriate for this puzzle?
- 56. Optimist's credo
- 59. Aberrations
- 60. Get lost!
- 61. Small bay
- 62. I - I connector of palindromic fame
- 63. Kid
- 64. Sergio of spaghetti Westerns
- 65. Sound after a pin prick, perhaps

Down

- 1. Last part
- 2. Fan
- 3. Response
- 4. Up to one's ears
- 5. "Felix ___" (George Eliot title)
- 6. Second word from Descartes?
- 7. "Clueless" phrase
- 8. Overwhelm with noise
- 9. River transports
- 10. Inactive
- 11. Sticky stuff
- 12. Conquistador's quest
- 13. Signature color of Valentine's Day
- 18. Nervous twitches
- 21. Postman's concern
- 24. Play start
- 25. Persia, today
- 26. Bank (on)
- 28. Vest's lack
- 29. Abbreviated afternoons
- 30. Worm-___ (deceit)
- 31. Unwanted carpenter?
- 32. Stern spot
- 34. Legal conclusion?
- 35. Coup in a certain board game
- 36. Yemeni port
- 37. Dweeb's pal
- 38. Certain belief
- 39. Pop or Pops
- 44. Necessitate
- 45. Sentence ender, on occasion
- 46. Changes
- 47. Big name in adhesives
- 48. Tenants' documents
- 50. Fairy-tale creature
- 51. Emulate Hans Brinker
- 52. Cantor and Lupino
- 53. Heche in "Wag the Dog"
- 54. ___ contendere (court plea)
- 55. Some feds
- 56. New Orleans' clock setting
- 55. Deck member
- 58. Second Amendment supporter (Abbr.)

1	2	3		4	5	6	7	8		9	10	11	12	13
14				15						16				
17			18							19				
20									21					
22								23				24	25	26
27					28	29	30				31			
				32						33	34			
35	36	37	38						39					
40							41							
42					43	44					45	46	47	48
49				50										
				52				53	54	55				
56	57	58						59						
60								61					62	
63								64						65

Sudoku

Enter numbers into the blank spaces so that each row, column and 3x3 box contains the numbers 1 to 9 without repeats.

		6	4		7			
					8			5
	2				1			
	9		7	6				
7		3		9			2	6
	5				8		9	7
		2	8		1			4
	1				9		6	
	3	7		5		8		



Brain Teasers

The water level in a reservoir is low, but doubles every day. It takes 60 days to fill the reservoir. How long does it take for the reservoir to become half full?



What makes this number unique: 8,549,176,320?

First, I threw away the outside and cooked the inside. Then I ate the outside and threw away the inside. What did I eat?

Four cars come to a four-way stop, all coming from a different direction. They can't decide who got there first, so they all go forward at the same time. They do not crash into each other, but all four cars go. How is this possible?



Kid's Corner

Join the Dots & Colour In

Get Mum or Dad to take a photo of your work and email it to marketing@brookshire.com.au with your name and age for your chance to win a cool prize.



WINNER
Luke Johnston - Perth WA



Snap That

STAFF PHOTOGRAPHY COMPETITION

Reece Weadley - Wheatbelt WA



David Evans - Darwin NT



Patrick Scott - Brisbane QLD



Liam Mellon - Albany WA



Daniel Broadway - Adelaide SA



Indi-Rose Swart - Age 9



Lilly Edwards - Age 7



Jamieson Swart - Age 6



Mat Edwards - Age 5



Isabella Torsiello - Age 5



Hollie Hill - Age 6

Congratulations to all of the winners from our last edition. You will all be receiving a prize in the post.

Equipment Hire List



Front End Loaders

CATEGORY	MAKE	MODEL	ENGINE	WEIGHT
1.5m ³	Komatsu	WA150	74 kW 99 HP @ 2000 rpm	7.5 Tonne
2.1m ³	Caterpillar	930K	110 kW @ 1600 rpm	13 Tonne
2.5m ³	Komatsu	WA250	124 kW 166 HP @ 2000 rpm	14 Tonne
3.1m ³	Komatsu	WA320	124 kW 166 HP @ 2000 rpm	14 Tonne
3.5m ³	Komatsu	WA380	140 kW 187 HP @ 2000 rpm	16 Tonne
3.75m ³ - 4m ³	Komatsu	WA430	173 kW / 232 HP @ 2.100 rpm	18 Tonne
3.4m ³	Caterpillar	950M	187 kW 250 HP	20 Tonne
3.6m ³	Caterpillar	962M	185 kW 248 HP	20 Tonne
4m ³ - 5m ³	Komatsu	WA470	204 kW / 274 HP @ 2.000 rpm	23 Tonne
5m ³	Komatsu	WA480	223 kW / 299 HP	25 Tonne
4m ³ - 5m ³	Volvo	L150G	210 kW / 1400 rpm	25 Tonne
4.7m ³ - 6.4m ³	Komatsu	WA500	266 kW / 357 HP @ 1900 rpm	32 Tonne
5.6m ³	Caterpillar	980M	278 kW	30 Tonne
5.6m ³	Caterpillar	982M	278 kW @ 1800 rpm	35 Tonne
5.6m ³	Hitachi	ZW370	289kW @ 1800 rpm	35 Tonne
6.4m ³	Caterpillar	988K	403 kW	51 Tonne
6.4m ³	Komatsu	WA600	395 kW / 529 HP @ 1800 rpm	55 Tonne
7m ³	Volvo	L260H	309 kW / 420 HP	34 Tonne
13m ³	Komatsu	WA900	638 kW / 856 HP	107 Tonne



Tool Carriers

CATEGORY	MAKE	MODEL	ENGINE	WEIGHT
2.2m ³ - 2.3m ³	Komatsu	WA250PT	104 kW 140 HP / 2000 rpm	10 Tonne
2.2m ³ - 2.3m ³	Komatsu	WA250PZ	103 kW 138 HP @ 2000 rpm	12 Tonne
1.9m ³ - 2.7m ³	Komatsu	WA270	111 kW 149 HP @ 2000 rpm	13 Tonne
2.5m ³ - 2.7m ³	Komatsu	WA320-8	123 kW/165 HP @ 2100 rpm	15 Tonne
2.5m ³ - 2.7m ³	Komatsu	WA320PZ-6	125 kW / 167 HP	15 Tonne
2.5m ³ - 2.7m ³	Volvo	L90F	129 kW @ 1700 rpm	16 Tonne
3m ³	Volvo	L110F	170 kW @ 1700 rpm	19 Tonne
3.1m ³	Hitachi	ZW180-5	126 kW @ 1500 rpm	14.5 Tonne
3.5m ³	Volvo	L120F	180 kW @ 1700 rpm	20 Tonne
4.2m ³	Volvo	L150F	209 kW @ 1400 rpm	23 Tonne
4.4m ³	Volvo	L180F	234 kW @ 1400 rpm	26.6 Tonne
5.2m ³	Volvo	L220H	279 kW 379 HP @ 1400 rpm	32.8 Tonne



Excavators

CATEGORY	MAKE	MODEL	ENGINE	BUCKET CAPACITY
1.5 Tonne	Komatsu	PC14R	11,6 kW / 15,6 HP @ 2.600 rpm	0.03m ³
1.75 Tonne	Sany	SY16C	14.6 kW @ 2400 rpm	0.04m ³
1.8 Tonne	Caterpillar	301.8	16.1kW / 19.2 HP @ 2,400 rpm	0.033m ³
1.85 Tonne	Sany	SY18C	14.6 kW @ 2400 rpm	0.04m ³
2.26 Tonne	Caterpillar	302	15.7kW / 21 HP @ 2,400 rpm	0.054m ³
2.76 Tonne	Sany	SY26U	14.6 kW @ 2400 rpm	0.06m ³
3 Tonne	Komatsu	PC30MR	22,0 kW / 29,5 HP @ 2.400 rpm	0.09m ³
3 Tonne	Hitachi	ZX33	21.2 kW (28.4 HP)	0.09m ³
3.85 Tonne	Sany	SY35U	18.2 kW @ 2400 rpm	0.12m ³
5 Tonne	Komatsu	PC55MR	29.1 kW 39 HP/2400 rpm	0.15m ³
5 Tonne	Komatsu	PC45MR	29.1 kW 39 HP/2400 rpm	0.15m ³
5 Tonne	Komatsu	PC40MR	29.4 kW 39.4 HP/2350 rpm	0.15m ³
5.3 Tonne	Sany	SY50U	29.1 kW @ 2400 rpm	0.15m ³
6.1 Tonne	Sany	SY60C	42.4 kW / 56.9 HP	0.21m ³
7.28 Tonne	Sany	SY75C	43 kW / 57.7 HP	0.28m ³
8 Tonne	Komatsu	PC78MR	40,5 kW / 54 HP @ 1.850 rpm	0.28m ³
8.5 Tonne	Komatsu	PC88MR	50.7 kW 68 HP @ 1950 rpm	0.34m ³
8.8 Tonne	Sany	SY80U	53.7 kW @ 2100 rpm	0.28m ³
9 Tonne	Caterpillar	308CR	52.4kW / 70.3 HP @ 2,200 rpm	0.23m ³
9.1 Tonne	Sany	SY95C	53.7 kw / 72 HP	0.4m ³
14 Tonne	Komatsu	PC138US	72.1 kW / 96.6 HP @ 2200 rpm	0.53m ³
14 Tonne	Komatsu	PC160LC	90 kW / 121 HP @ 2200 rpm	0.6m ³
14 Tonne	Hyundai	R140LC	84 kW / 113 HP @ 2,100 rpm	0.6m ³
15.1 Tonne	Sany	SY135C	78.5 kW @ 2000 rpm	0.6m ³
16 Tonne	Sany	SY155U	78.5 kw @ 1900 rpm	0.06m ³
16 Tonne	Hitachi	ZX160LC	90.2 kW / 122 HP @ 2,200 rpm	0.73m ³
22 Tonne Zero Swing	Komatsu	PC228US	116 kW 155 HP @ 2000 rpm	1.0m ³
22 Tonne	Caterpillar	320GC	107 kW (143 hp)	1.0m ³
22 Tonne	Caterpillar	320DL	103 kW / 140 HP @ 1800 rpm	1.3m ³
22 Tonne	Hitachi	ZX210H	122 kW (164 HP)	1.00m ³
22 Tonne	Komatsu	PC200LC	110 kW 147 HP / 2000 rpm	1.2m ³
22 Tonne	Komatsu	PC210LCi	118 kW / 158 HP @ 2000 rpm	0.97m ³
22 Tonne	Komatsu	PC210LC	116 kW / 156 HP @ 2000 rpm	1.68m ³
22 Tonne	Komatsu	HB215LC	110 kW / 148 HP @ 2000 rpm	1.36m ³
22.6 Tonne	Sany	SY215C	122 kw @ 2300 rpm	0.93m ³
23 Tonne	Komatsu	PC220LC	110 kW 147 HP / 2000 rpm	1.26m ³
23 Tonne	Hitachi	ZX225USLC	159 hp (118 kW) @ 2,000 rpm	1.09m ³
30 Tonne	Volvo	EC290CLC	153 kW (205 hp)	1.2m ³
30 Tonne	Komatsu	PC270LC	149 kW 200 HP / 2050 rpm	1.25m ³
31.5 Tonne	Sany	SY305H	212 kW @ 2000rpm	1.7m ³
33 Tonne	Hitachi	ZX330	247 HP (180 kW)	1.4m ³
33 Tonne	Hitachi	ZX350H	184 kW (246 HP)	2.00m ³
34 Tonne	Komatsu	PC300LC	194 kW 260 HP / 1950 rpm	1.8m ³
35 Tonne	Hitachi	ZX350LC	202 kW / 271 HP	2.1m ³
36 Tonne	Komatsu	PC360LCi	192 kW / 257 HP @ 1950 rpm	1.96m ³
36 Tonne	Komatsu	PC350LC	194 kW / 260 HP @ 1950 rpm	2.66m ³
36.7 Tonne	Sany	SY365H	205 kW / 275 HP	1.5m ³
37 Tonne	Caterpillar	336	232 kW	2.27m ³
45 Tonne	Komatsu	PC450LC	270 kW / 362 HP @ 1900 rpm	2.8m ³
54.5 Tonne	Sany	SY500H	298 kW / 399.6 HP	2.2m ³
60 Tonne	Komatsu	PC600LC	288 kW 386 HP @ 1800 rpm	3.81m ³
76.2 Tonne	Sany	SY750H	377 kW @ 1800 rpm	4.2m ³
78.6 Tonne	Sany	SY870H	377 kW @ 1800 rpm	5.0m ³
80 Tonne	Komatsu	PC850-8E0SE	370 kW 496 HP / 1800 rpm	4.3m ³
85 Tonne	Komatsu	PC800LC	363 kW 487 HP @ 1800 rpm	4.5m ³
125 Tonne	Sany	SY1250H	567 kW @ 1800 rpm	7m ³



Rollers

CATEGORY	WEIGHT	MAKE	MODEL
Smooth Drum	7 Tonne	Bomag	BW177DH
Smooth Drum	11 Tonne	Dynapac	CA252D
Smooth Drum	11 Tonne	Bomag	BW212D
Smooth Drum	12 Tonne	Hamm	3412 HT VIO
Smooth Drum	12 Tonne	Caterpillar	CS64B
Smooth Drum	12 Tonne	Bomag	BW213D
Smooth Drum	12.5 Tonne	Caterpillar	CS56B
Smooth Drum	12.7 Tonne	Dynapac	CA302D
Smooth Drum	13.2 Tonne	Dynapac	CA362D
Smooth Drum	12.6 Tonne	Bomag	BW213D
Smooth Drum	15.7 Tonne	Hamm	3516
Smooth Drum	16 Tonne	Caterpillar	CS74B
Smooth Drum	16 Tonne	Caterpillar	CP76B
Smooth Drum	16.1 Tonne	Bomag	BW216D
Smooth Drum	17.89 Tonne	Hamm	3518
Smooth Drum	18.7 Tonne	Caterpillar	CS78B
Smooth Drum	19.3 Tonne	Dynapac	CA6000D
Smooth Drum	19.8 Tonne	Hamm	3520
Smooth Drum	20 Tonne	Caterpillar	CS79B
Padfoot	12 Tonne	Caterpillar	CS12 GC
Padfoot	12 Tonne	Caterpillar	CS56B
Padfoot	12 Tonne	Bomag	BW211D
Padfoot	12.6 Tonne	Bomag	BW213D
Padfoot	13.2 Tonne	Dynapac	CA362D
Padfoot	15.7 Tonne	Hamm	3516P
Padfoot	16.1 Tonne	Bomag	BW216PD
Padfoot	17.6 Tonne	Caterpillar	CP76B
Padfoot	17.89 Tonne	Hamm	3518P
Padfoot	18 Tonne	Dynapac	CA6000PD
Padfoot	18.6 Tonne	Dynapac	CA602PD
Padfoot	19.4 Tonne	Bomag	BW219PD
Padfoot	19.8 Tonne	Hamm	3520P
Multi Tyre	18 Tonne	Hamm	HP280
Multi Tyre	18 Tonne	Caterpillar	CW34
Multi Tyre	18.3 Tonne	Hamm	GRW280
Multi Tyre	20 Tonne	Ammann	AP240
Multi Tyre	20 Tonne	Bomag	BW24RH



Compactors & Tampers

CATEGORY	WEIGHT	MAKE	MODEL
Tampers	98kg	Husqvarna	LT800
Plate Compactors	185kg	Husqvarna	LG164
Plate Compactors	244kg	Husqvarna	LG204
Plate Compactors	302kg	Husqvarna	LG300
Plate Compactors	436kg	Husqvarna	LG400
Plate Compactors	500kg	Bomag	BPR 70/70D
Plate Compactors	500kg	Dynapac	LG500
Plate Compactors	750kg	Bomag	BPR 100/80
Plate Compactors	750kg	Dynapac	LH700
Plate Compactors	800kg	Husqvarna	LH804



Compressors

TYPE	AIR FLOW	DRY WEIGHT	PRESSURE
Trailer	176.5 cfm	800 kg	7 bar
Skid	185 cfm	950 kg	7 bar
Trailer	251 cfm	1400 kg	7 bar
Skid	400 cfm	1920 kg	10 bar
Trailer	423 cfm	2000 kg	7 bar
Trailer	530 cfm	2600 kg	10 bar
Trailer	893 cfm	3700 kg	8 bar



Graders

CATEGORY	MAKE	MODEL	WEIGHT
12' Motor Grader	Caterpillar	120M	14.5 Tonne
12' Motor Grader	Komatsu	GD555	8 Tonne
14' Motor Grader	Caterpillar	140M	18.4 Tonne
14' Motor Grader	Caterpillar	140M AWD	18.4 Tonne
14' Motor Grader	Caterpillar	140H	18.4 Tonne
14' Motor Grader	Caterpillar	140G	18.4 Tonne
14' Motor Grader	Caterpillar	150 AWD	19.8 Tonne
14' Motor Grader	Komatsu	GD655	18.5 Tonne
14' Motor Grader	John Deere	770G	19.3 Tonne
14' Motor Grader	John Deere	672G	20 Tonne
14' Motor Grader	John Deere	772GP	20.5 Tonne
16' Motor Grader	John Deere	872GP	21.6 Tonne
16' Motor Grader	Caterpillar	16MLR	30 Tonne
24' Motor Grader	Caterpillar	24	73 Tonne



Dozers

CATEGORY	MAKE	MODEL	BLADE WIDTH
17.3 Tonne	Caterpillar	D6N	4080mm
17.7 Tonne	Caterpillar	D6H	4486mm
21 Tonne	Caterpillar	D6T XL	3693mm
21 Tonne	Caterpillar	D6T LGP	3693mm
27 Tonne	Caterpillar	D7	3988mm
39.4 Tonne	Caterpillar	D8	5045mm
70 Tonne	Caterpillar	D10T	7416mm



Dump Trucks

CATEGORY	PAYLOAD	MAKE	MODEL
Site Dumper	9 Tonne	Wacker Neuson	DV90
Articulated	30 Tonne	Komatsu	HM300
Articulated	37 Tonne	Hitachi	AH400D
Articulated	40 Tonne	Komatsu	HM400
Articulated	41 Tonne	Caterpillar	745



Water Trucks

CATEGORY	CAPACITY	MAKE	MODEL
Rigid	14,000 L	Isuzu	FVZ 260-300
Rigid	14,000 L	Hino	500
Rigid	15,000 L	Isuzu	FVZ 260-300
Rigid	15,000 L	Hino	500
Rigid	15,000 L	Mercedes Benz	Axor
Rigid	20,000 L	Isuzu	FYH 2000 8x4
Rigid	20,000 L	Iveco	Trakker AD450 6x6
Articulated	16,000 L	JCB	Fastrac 185/65
Articulated	16,000 L	Chamberlain	C6100
Articulated	16,000 L	Mercedes Benz	MB Trac
Articulated	26,000 L	Komatsu	HM300
Articulated	35,000 L	Komatsu	HM400



Service, Fuel & Tipper Trucks

CATEGORY	CAPACITY	MAKE	MODEL
Service Truck	8 Compartments	Isuzu	FVZ 260 - 300
Service Truck	8 Compartments	Hino	500
Fuel Trailer	1,400 L	-	-
Fuel Trailer	2,000 L	-	-
Fuel Truck	14,000 L	Hino	500
Tipper Truck	11m ³	Isuzu	FVZ 260-300
Tipper Truck	11m ³	Hino	500
Tipper Truck	11m ³	Isuzu	FVZ 1400
Side Tipper	21m ³	Howard Porter	-
Side Tipper	24m ³	Road West	-



Backhoes

DIG DEPTH	MAKE	MODEL	WEIGHT
4.32m	JCB	4CX	8.178 Tonne
4.8m	Komatsu	WB97R-5E0	7.6 Tonne
4.883m	Caterpillar	432E	9.1 Tonne
6.14m	JCB	5CX	10.6 Tonne



Skid Steer Loaders

CATEGORY	MAKE	MODEL	TIPPING LOAD (35%)
Tracked	Bobcat	T140SJC	635kg
Tracked	Caterpillar	239D	695kg
Tracked	Caterpillar	249D	790kg
Tracked	Caterpillar	259D	915 kg
Wheeled	Komatsu	SK714	650kg
Wheeled	Caterpillar	226B	680kg
Wheeled	Caterpillar	246C	975kg



Articulated Boom Lifts

HEIGHT	MAKE	MODEL	CATEGORY
34 ft	JLG	H340AJ	Hybrid
34 ft	Genie	Z34 / 22 N	Electric
45 ft	JLG	450AJ	Diesel
45 ft	Genie	Z-45 XC	Rough Terrain
51 ft	Genie	Z-51 / 30J RT	Rough Terrain
62 ft	Genie	Z-62 / 40	Rough Terrain
80 ft	JLG	H800AJ	Hybrid
80 ft	JLG	800 AJ	Diesel
80 ft	Haulotte	HA26 RTJ PRO	Diesel
80 ft	Genie	Z-80 / 60	Rough Terrain
125 ft	JLG	1250AJP	Diesel
135 ft	Genie	ZX-135 / 70	Rough Terrain



Generators

POWER	OUTPUT	RUN TIME	WEIGHT
10 kVA	8 kW	35 hours	700 kg
20 kVA	16 kW	18 hours	726 kg
45 kVA	36 kW	12 hours	1085 kg
60 kVA	48 kW	10 hours	1110 kg
80 kVA	64 kW	11 hours	1403 kg
100 kVA	80 kW	14 hours	1685 kg
150 kVA	120 kW	9 hours	2000 kg
200 kVA	160 kW	10 hours	2440 kg
255 kVA	204 kW	9 hours	2600 kg
300 kVA	240 kW	7 hours	3068 kg
350 kVA	280 kW	11 hours	4439 kg
400 kVA	320 kW	9 hours	4400 kg
450 kVA	360 kW	9 hours	4597 kg
500 kVA	400 kW	8 hours	4800 kg
600 kVA	480 kW	11 hours	5970 kg
670 kVA	536 kW	10 hours	5970 kg
750 kVA	600 kW	3 hours	9200 kg
800 kVA	640 kW	3 hours	10000 kg
910 kVA	728 kW	3 hours	11600 kg
1035 kVA	828 kW	2 hours	11680 kg
1253 kVA	1002 kW	2 hours	14100 kg
1505 kVA	1204 kW	2 hours	14050 kg
1705 kVA	1364 kW	1 hours	15500 kg
2000 kVA	1600 kW	1 hours	16000 kg

*All Generators under 100 kVA are available on trailers.



Diesel Pumps Surface dewatering

SIZE	Q MAX	MAX HEAD
80 mm	45 L/sec	19 m open and silent option
100 mm	69 L/sec	36 m open and silent option
100 mm	77 L/sec	50 m open and silent option
150 mm	150 L/sec	37 m open and silent option
150 mm	141 L/sec	51 m open and silent option
All Pumps under 150 mm size are available on trailers		
200 mm	175 L/sec	30 m open and silent option
200 mm	236 L/sec	50 m open and silent option
300 mm	313 L/sec	29.5 m open and silent option
300 mm	600 L/sec	71 m open and silent option



Telehandlers

LIFTING WEIGHT	MAKE	MODEL	LIFTING HEIGHT
3 Tonne	JCB	531-70	7000mm
3.2 Tonne	Manitou	MT732	6900mm
3.5 Tonne	JCB	535-95	9500mm
4 Tonne	JCB	541-70	7000mm
4 Tonne	Merlo	TF42.7-100	9500mm
4 Tonne	Manitou	MT-X 1440	13530mm
4 Tonne	Manitou	MT-X 1840	17550mm
6 Tonne	Merlo	P60.10EE	9550mm



Scissor Lifts

HEIGHT	MAKE	MODEL	CATEGORY
19 ft	JLG	ES1932	Electric
19 ft	JLG	R1932	Electric
26 ft	JLG	R2632	Electric
26 ft	Genie	GS-2632	Electric
26 ft	Genie	GS2669 RT	Rough Terrain
32 ft	JLG	ES 3246	Electric
32 ft	JLG	R 3246	Electric
33 ft	Genie	GS 3369 RT	Rough Terrain
33 ft	Genie	GS 3384	Rough Terrain
33 ft	Snorkel	S3370 RT	Rough Terrain
40 ft	JLG	R 4045	Electric
40 ft	Genie	GS-4069 RT	Rough Terrain
43 ft	Genie	GS-4390	Rough Terrain
46 ft	Genie	GS-4655	Electric
47 ft	JLG	ERT 4769	Rough Terrain
53 ft	Genie	GS-5390	Rough Terrain



Forklifts

LIFTING HEIGHT	MAKE	MODEL	LOAD CAPACITY
3000 mm	Hyster	H4.0FT	4 Tonne
4000 mm	Hyster	H5.0FT	5 Tonne
5336 mm	Hyster	H8.00XM	8 Tonne
6200 mm	Hyster	H16.00XM	16 Tonne



Commercial Vehicles

SEATS	MAKE	MODEL	CATEGORY
12	Toyota	Hiace	Mine Spec Bus
7	Toyota	Land Cruiser	Mine Spec 4x4 Wagon
7	Toyota	Prado	Mine Spec 4x4 Wagon
5	Toyota	Hilux	Mine Spec 4x4 Dual Cab Ute
5	Toyota	LC78 DC	Mine Spec 4x4 Dual Cab
2	Toyota	LC78 SC	Mine Spec 4x4 Single Cab
2	Toyota	Hilux	Mine Spec 4x4 Single Cab Tray Ute



Telescopic Boom Lifts

HEIGHT	MAKE	MODEL	CATEGORY
45 ft	Genie	S-45 XC	Rough Terrain
65 ft	Genie	S65 XC	Rough Terrain
80 ft	Genie	S-80 XC	Rough Terrain
85 ft	Genie	S-85XC	Rough Terrain
125 ft	Genie	SX-125 XC	Rough Terrain
135 ft	Genie	SX-135 XC	Rough Terrain
150 ft	Genie	SX-150	Rough Terrain



Diesel Pumps High head

INLET SIZE	OUTLET SIZE	Q MAX	MAX HEAD
100 mm	80 mm	42 L/sec	92 m
150 mm	100 mm	117 L/sec	101 m
200 mm	150 mm	167 L/sec	101 m
250 mm	200 mm	408 L/sec	109 m



Submersible Pumps

TYPE POWER	SIZE	Q MAX	MAX HEAD
Dewatering 1 kW	50 mm	10 L/sec	16 m
Dewatering 2 kW	75 mm	14 L/sec	24 m
Dewatering 3.4 kW	75 mm	23 L/sec	23 m
Dewatering 6.6 kW	75 mm	20 L/sec	38 m
Dewatering 8.8 kW	75 mm	28 L/sec	40 m
Dewatering 6.6 kW	100 mm	37 L/sec	25 m
Dewatering 8.8 kW	100 mm	45 L/sec	30 m
Dewatering 14 kW	100 mm	20 L/sec	65 m
Dewatering 22 kW	100 mm	40 L/sec	65 m
Dewatering 30 kW	100 mm	40 L/sec	86 m
Dewatering 22 kW	150 mm	95 L/sec	40 m



Submersible Pumps

TYPE	POWER	SIZE	Q MAX	MAX HEAD
Sludge	3.7 kW	75 mm	20 L/sec	13 m
Sludge	9 kW	100 mm	28 L/sec	23 m
Sludge	11 kW	100 mm	42 L/sec	24 m
Sludge	15 kW	100 mm	22 L/sec	27 m
Sludge	37 kW	100 mm	80 L/sec	50 m
Sludge	45 kW	150 mm	124 L/sec	30 m
Sludge	75 kW	150 mm	155 L/sec	48 m
Slurry	3.1 kW	75 mm	15 L/sec	15 m
Slurry	5.7 kW	100 mm	25 L/sec	23 m
Slurry	8 kW	100 mm	28 L/sec	25 m



Pump Accessories

DN150 Standpipe | clearance 4.2m

DN150 Standpipe | clearance 4.8m

DN150 Standpipe | clearance 5.2m

DN150 Standpipe | clearance 5.8m

DN150 Standpipe | clearance 6.5m

DN150 Standpipe | clearance 8.6m

DN200 Standpipe | clearance 4.2m

DN200 Standpipe | clearance 4.8m

DN200 Standpipe | clearance 5.2m

DN200 Standpipe | clearance 5.8m

DN200 Standpipe | clearance 6.5m

DN200 Standpipe | clearance 8.6m

Hose & Cable Floats

Pontoons

Flow Meters

Suction Hose

Discharge Hose

30 KL Water Storage Tanks

60 KL Water Storage Tanks

Remote Monitoring



Lighting Towers

LAMP POWER	ILLUMINATED AREA	RUNNING TIME
1800 W	5000 / 500 m ²	100 hours
4 x 320 W	4500 / 4200 m ²	143 hours
4 x 320 W	5000 m ²	218 hours
4 x 350 W	5000 m ² @ 20 Lux	220 hours
4 x 350 W	5.4 lm /m ² @ 28.328 m ²	150 hours



Power Accessories

TYPE	SIZE	OUTLET
Distribution Board	32 amp	8 x 240V 15A 1 x 415V 20A 1 x 415V 32A
Distribution Board	63 amp	10 x 240V 15A 2 x 415V 20A 2 x 415V 32A
Distribution Board	125 amp	8 x 240V 15A 2 x 415V 32A
Power Cables	20 amp	cable length can be customised
Power Cables	32 amp	cable length can be customised
Power Cables	63 amp	cable length can be customised
Power Cables	100 amp	cable length can be customised
Power Cables	Hardwire	cable length can be customised



Fuel Accessories

TYPE	SIZE	COMMENTS
Fuel Tank	1000 L	Double banded, multiple fuel connections
Trailer Mounted	1000 L	Double banded, multiple fuel connections
Fuel Tank	2000 L	Double banded, multiple fuel connections
Fuel Tank	4000 L	Double banded, multiple fuel connections
Fuel Tank	10000 L	Double banded, multiple fuel connections



Machine Attachments

CATEGORY	ATTACHMENT
Excavator	GP Bucket
Excavator	Batter Bucket
Excavator	Trenching Bucket
Excavator	Skeleton Bucket
Excavator	Sieve Bucket
Excavator	Screening Bucket
Excavator	Trapezoidal Bucket
Excavator	Tilting Bucket
Excavator	Rock Breaker
Excavator	Auger
Excavator	Misu Heavy Duty Screen Attachment
Excavator	GP Grapple
Excavator	360° Grapple
Excavator	Rock Grapple
Excavator	Hydraulic Grapple
Excavator	Mechanical Grab
Excavator	Hydraulic Grab
Excavator	Sleeper Grab
Excavator	Plate Compactor
Excavator	Compaction Wheel
Excavator	Tree & Stump Mulcher
Excavator	Ripper
Excavator	GPS
Tool Handler	GP Bucket
Tool Handler	Rake Bucket
Tool Handler	Stemming Bucket
Tool Handler	Grain Bucket
Tool Handler	Forks
Tool Handler	Jib
Tool Handler	Log Forks
Tool Handler	Man Cage
Tool Handler	Tyre Grab
Tool Handler	GPS

CATEGORY	ATTACHMENT
Skid Steer	GP Bucket
Skid Steer	Rake Bucket
Skid Steer	Forks
Skid Steer	Bucket Broom
Skid Steer	Auger
Skid Steer	Trencher
Skid Steer	Levelling Attachment
Skid Steer	GPS
Telehandler	GP Bucket
Telehandler	Batter Bucket
Telehandler	Forks
Telehandler	Jib
Telehandler	GPS
Backhoe	GP Bucket
Backhoe	Trenching Bucket
Backhoe	Batter Bucket
Backhoe	Batter Bucket (Digger)
Backhoe	Auger
Backhoe	Forks
Backhoe	GPS
Grader	Roller
Grader	GPS
Tractor	Grid Roller

Small, Powerful, & Precise



SY26U 2.76 Tonne Mini Excavator

- Yanmar engine
- Zero tail swing radius
- Independent boom swing
- Intelligent control system

\$39,000 +GST

with GP Bucket, Batter Bucket, Trench Bucket and Half Hitch

Or upgrade to Hydraulic Hitch - \$42,000 +GST

*Only available in WA & NT

5 Years or 5000 hrs Warranty



IN STOCK AND READY TO WORK!

Sany SY16C 1.75t Mini Excavator

Designed to be nimble for work in tight spaces and narrow access locations.

Technical Specifications

Weight: 1.75 tonnes
Engine: Yanmar T4
Hydraulics: Kawasaki
Width: 0.98m
Bucket: 0.04m³



Warranty 5 Years or 5000 hrs

Sany SY35U 3.86t Excavator

Fully enclosed cab, limited tail swing radius, and independent boom for confined spaces.

Technical Specifications

Weight: 3.86 tonnes
Engine: Yanmar 3TNV88FESS
Hydraulics: Kawasaki
Width: 1.72m
Bucket: 0.12m³



Warranty 5 Years or 5000 hrs

Sany SY365H 36.7t Excavator

Dual pump, dual circuit constant power control system.

Technical Specifications

Weight: 36.7 tonnes
Engine: Isuzu T4
Hydraulics: Kawasaki
Width: 3.39m
Bucket: 1.5m³



Warranty 4 Years or 8000 hrs

Husqvarna LT8005 Tamper

Well-balanced and powerful, developed for compaction in trenches or other narrow spaces.

Technical Specifications

Weight: 99 kg
Engine: Hatz 1B20 Diesel
Width: 330mm



Husqvarna LG300 Plate Compactor

Lightweight yet powerful forward and reversible plate compactor is developed for smaller jobs.

Technical Specifications

Weight: 307 kg
Engine: Hatz 1B30 Diesel
Width: 500mm



Husqvarna LH700 Plate Compactor

Easy to manoeuvre, the fully reversible hydraulic plates are made to effectively handle even the most demanding jobs.

Technical Specifications

Weight: 780 kg
Engine: Hatz 1D90V Diesel
Width: 960mm



Italdem GK-100 S Rock Breaker

Powerful and precise rock breaker to suit excavators ranging from 1 tonne to 3 tonnes.

Technical Specifications

Weight: 105 kg
Height: 1145 mm
Chisel Diameter: 46 mm



Italdem GK-225 S Rock Breaker

To suit excavators from 3 tonnes to 6 tonnes, using high technology and first choice materials

Technical Specifications

Weight: 220 kg
Height: 1455 mm
Chisel Diameter: 67 mm



Genmac Strong G30PS Generator

Heavy Duty 3 cylinder silent generator designed for continuous use in any weather.

Technical Specifications

Power: 30 kVA
Frequency: 50 Hz
Speed: 1500 rpm



Authorised Dealers for SANY



BROOKS
EQUIPMENT

1300 BROOKS (276 657)

@ sales@brooksequipment.com.au

www.brooksequipment.com.au