

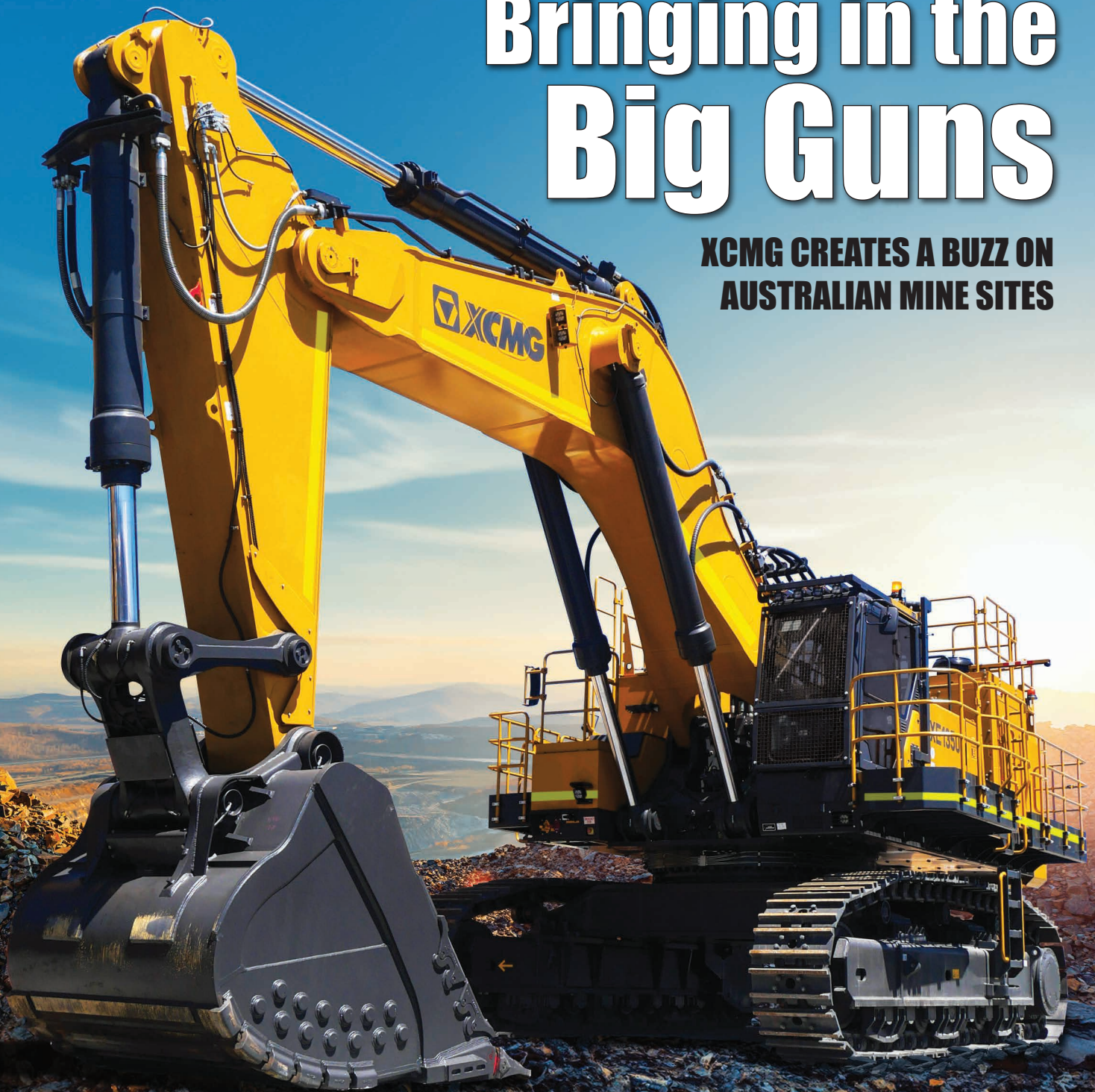
YOUR FREE COPY

THE *Eneabba*

AUTUMN 2025 ISSUE 20

Bringing in the Big Guns

XCMG CREATES A BUZZ ON AUSTRALIAN MINE SITES



The story of Eneabba



When 23-year-old Doug Brooks recognised an opportunity to hire out equipment to the WA mining industry in 1979, he knew it was something he had to pursue. Doug scrambled together every dollar he had, to purchase two disassembled compressors, with the remainder of the bill being settled by bankcard. He opened 'Brooks Hire Service' and ran the business from a shed in the remote WA town of Eneabba. All the while, Doug was living in a 'humpy' at the rear of the shed. There were many that warned him of the difficulty of starting a new business in a very competitive industry, but Doug was determined and it was only a matter of time before he was turning a profit on his compressors. What started as two compressors on hire, soon turned into twelve pumps on hire, but the turning point came when Doug purchased his first piece of mobile equipment: an eight tonne JEC crane. There are many great stories that came out of that shed in Eneabba. It was the foundation of Brooks Hire and the place where all of the 'hard yards' were done. Eneabba is remembered as the birth place of Brooks Hire Service.

Your first choice for

Medical Rescue Flights



Medical Air is an accredited provider of national and international medical evacuation flights.

- 6 x Intensive Care Unit (ICU) fitted Learjets
- Australian doctors, medical staff, and pilots on standby
- To and from any country to anywhere in Australia
- Complete bed to bed transfers, including visas
- Private and insurance funded flights



1300 MED AIR (633 247)
@ medical@medicalair.com.au
medicalair.com.au



From the MD...

Well, it's been a busy start to 2025!

Firstly, I am proud to announce that Brooks Hire has been selected as a finalist in the Hire & Rental Industry Association (HRIA) Hire Company of the Year Awards. HRIA judges, Bernie Kiebosch and Tony Crane, flew from Melbourne to Perth in March to view our head office and assess the business on various aspects of operations. The winners will be announced at the Hire Industry Excellence Award Dinner being held in Melbourne on 5th June. Wish us all the best.

Also in March, Brooks Equipment Sales facilitated a Customer Dig Day. It was great to see so many people turn up to see what all the fuss surrounding XCMG is. Customers were able to test drive the machines and get a hands on feel for their operation. I'd personally like to thank the guys at WA Limestone for lending us their quarry for the event.

In May, a small team from Brooks will be hosting some of our mining clients on a trip to China to visit XCMG's main factory. We visited the factory last year and were blown away. We are really looking forward to showing our clients first hand, the technology that goes into XCMG machine production.

Finally, I'd like to express my gratitude to our long term staff members who are celebrating milestones this year. Congratulations to Danielle Thomson, Jack Eyo, Josh Willett, and Dylan Prince. From the whole Brooks family, thanks for your service.

Stuart Brooks
Managing Director

THE Eneabba

AUTUMN 2025

contents



03 In Pursuit of a Quarry
WA Limestone celebrates 50-year milestone



09 A Matter of Customs
ORH Truck Solutions engineer excellence



16 The Tech Report
Articulated Dump Truck Tyres



05 Minesite
Where mining stories are told



11 The Future is H₂ Green
Murchison Green Hydrogen Project



17 AgTech
Adapting Australian Agriculture



07 Steeling a Dream
Stirling Steelworks fabricates a future



13 Customer Dig Day
Brooks Equipment bring their toys to the sand pit



19 New Machines
Look what's just rolled into the yard



23 Events and Exhibitions
Out and about with Brooks



26 Company Milestones
Staff celebrating 10 years with Brooks



21 Bringing in the Big Guns
XCMG creates a buzz on Australian mine sites



25 Brooks Around the Nation
Branch news from around the country

27 Welcome Aboard
Meet the new faces at Brooks

33 Snap That
Staff photography competition

31 The Puzzler Page
Flex your brain over a cup of coffee

35 Equipment Hire List
View our entire fleet with specs

BROOKS

CONTACT DETAILS

Brooks Hire Service Head Office

30 Coulson Way
Canning Vale WA 6155

Phone: 1300 276 657

Email: sales@brookshire.com.au

www.brookshire.com.au

The Eneabba is a Brooks Hire Service Pty Ltd publication. All photographs and written articles remain the property of Brooks Hire Service Pty Ltd. No reproduction in whole or in part of this publication is allowed without the permission of the Managing Director.

If you would like to make a submission, please email marketing@brookshire.com.au

Digital Distribution 12,884
Printed Copies 5,000



WA Bluemetal Byford Quarry

In Pursuit of a Quarry

WA Limestone celebrates 50 year milestone



What started as a single limestone quarry – complete with a lean-to shack as an office – would diversify and grow over 50 years, to what is now one of Western Australia's largest suppliers of road construction and building materials, as well as a specialist in marine construction and civil works – WA Limestone.

The Early Days

It was from humble beginnings that three Italian immigrants, Michael Della Bona, Renzo Della Bona, and Peter Zamboni, purchased a small limestone business in Perth's south in 1973. It was a steep learning curve for the immigrants, as they faced challenges dealing with tenders, contracts, claims, and disputes, but they made it work.

The first big turning point for WA Limestone was in 1978, when they were awarded the contract for a 1-kilometre seawall at Fremantle Sailing Club. The project required 300-400 tonnes of limestone, which was a huge undertaking for just three men. However, they completed the works successfully, and the business grew from being just a supplier, to the next level of being a supplier, installer, and contractor.

From there, WA Limestone was able to tender the 1979 Port Dennison project.



The first quarry, Moylan Road Wattleup

Located in Dongara, some 350km north of Perth, the distance of the Port Dennison project put the small team out of their comfort zone. Through hard work and dedication, they were able to deliver the project on time and very successfully. It was these two projects that set the scene for what was to come.



How the Business Grew

With WA Limestone taking on more major projects requiring reconstituted limestone blocks, it was a natural progression for the company to diversify. In 1983, WA Limestone expanded with the formation of a new division, Limestone Building Block Co (LBB). LBB specialises in the manufacture of reliable and quality reconstituted limestone blocks to the commercial and industrial sectors. Today they have grown to become one of the largest WA suppliers of limestone blocks, producing more than 1 million blocks per year.

In 1990, the family business purchased a quarry site in Byford. The site would later be renamed WA Bluemetal. Quarry production began supplying granite products for the company's growing number of seawall and road construction projects in 2000. Today, WA Bluemetal produces approximately 1 million tonnes of granite annually, with the site having a lifespan exceeding 100 years.

WA Limestone launched WA Premix in 2004 with the first concrete batch plant established in the regional city of Mandurah. The opening of the concrete production business was made possible due to the earlier acquisition of the Byford quarry (WA Bluemetal), which provided the business with an extensive supply of granite; a key ingredient of concrete. When launching WA Premix, Mandurah was experiencing a significant growth period with many of the canals, and associated housing, being built.

The commencement of the construction of the Perth-Mandurah Rail Line also proved instrumental to the development of the area. These prominent infrastructure projects made the city a perfect location to open the company's first concrete plant to take advantage of the high volume of work in the area. Since then, WA Premix has opened a further four plants including Bibra Lake (2006), Neerabup (2017), Bayswater (2019) and Cardup (2022). This portfolio of concrete batch plants allows the company to service the entire Perth Metropolitan region.



WA Premix Bayswater

With large volumes of material being transported across WA, it made perfect sense for WA Limestone to create a transport division, and so, WA Limestone Heavy Haulage was opened. The heavy haulage division provides specialised transport solutions with a versatile fleet of heavy-duty trailers and platforms, including 150, 100, 85, and 50-tonne floats, as well as flattops and drop-deck trailers.

Growth leads to growth, so in 2017, WA Limestone Group established B&F Consolidated Group (BFCG). Harnessing decades of WA Limestone's crushing and screening experience, BFCG is a turnkey mining project and services provider. BFCG specialises in turnkey operational fleet solutions, material processing, crushing, screening and bulk handling services.

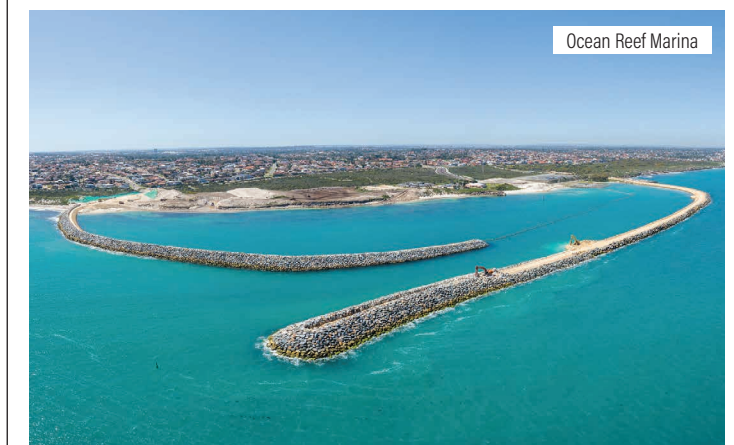
As the family business grew, the sons of the Della Bona families joined the team. Firstly, Steven and David Della Bona, followed by younger family members, Peter and James Della Bona in the early 2000's. They are now the current Directors of WA Limestone Group.

Projects at Present

In November 2024, WA Limestone Group, in collaboration with Italia Stone Group, was awarded a \$70 million contract for the construction of a breakwater as part of the Transforming Bunbury's Waterfront project. The project involves significant seafloor dredging as well as the supply and placement of substantial quantities of core and armour rock, to build the breakwater, providing essential protection against coastal erosion and improving marine infrastructure. The Bunbury Waterfront Redevelopment is scheduled for completion in 2026.

Some other recent projects include:

- Mineral Resources Heavy Haulage Road (Completed 2024)
- Tonkin Gap Alliance (completed 2024)
- Ocean Reef Marina (completed 2024)



Ocean Reef Marina

Now in its 51st year of operations, WA Limestone Group has amassed 35 quarries across Western Australia, employs a workforce of over 400 full-time employees and contractors, and produces over 6 million tonnes of product per annum. They are one of the state's most successful and largest privately-owned quarry and contracting companies, and responsible for many WA seawall projects spanning across decades.

From one Australian family-owned company to another, Brooks wish WA Limestone Group all the best for their next 50 years in business.



Minesite

Where mining stories are told

What do a solar farm, and Port Hedland Industries Council's (PHIC) Vertebrate Pest Management Program have in common?

Quite a lot, as it turns out. Energy infrastructure business APA's Port Hedland Power Station Solar Farm site is now incorporated into the PHIC Greater Port Hedland Vertebrate Pest Management Program (VPMP).

The program targets red foxes and feral cats, aiming to reduce the numbers in Port Hedland and protect native animals including flatback turtles, quolls, bilbies, echidnas, birds, and lizards.

With APA's help, the program now covers about 10,750ha.

A beach control program aims to protect turtles when they are laying eggs and hatchlings as they emerge.

A hinterland control program is timed to target foxes and feral cats when they are breeding to reduce their numbers and the associated predation of turtles, quolls, birds and lizards.

The good news is that after two full years, there has been an increase in native fauna and a decrease in feral fox activity.

This successful program is just one example of industry collaborating to deliver meaningful community, social, and environmental outcomes.

PHIC members have been involved in efforts to manage vertebrate pests in Port Hedland since 2009 when individual members started coordinating their programs to support work undertaken by Care for Hedland.

Stakeholders including Care for Hedland, Pilbara Ports, Roy Hill, Fortescue, BHP, Dampier Salt, and Town of Port Hedland have been involved in various coordinated programs since its implementation. PHIC commenced coordination of the VPMP in 2022, with the aim of regular industry involvement in the program.

Before a coordinated VPMP, foxes were raiding turtle nests, with Care for Hedland's turtle monitoring program indicating that up to 88 per cent of nests were destroyed at some beaches within a single nesting season.



The successful program was highlighted in last year's edition of the Minesite magazine, a collaboration involving Platform Publications and the WA Mining Club, with hard copies sent to more than 1,000 members and the digital version accessed by more than 25,000 readers since it was published in November last year.

Through its eclectic editorial content, Minesite is a window into the resources sector. The 2024 edition included contributions from major miners including BHP, Fortescue, Tianqi, and Pilbara Minerals (now PLS), equipment and service supplier Brooks, Australian Underground Drilling, Thiess, Pilbara Ports, and a range of up-and-coming explorers and mid-tier miners.

One of the more remarkable articles from 2024 was from Miners' Promise, established in 2010 by Helen Fitzroy and driven by the profound personal tragedy of losing her husband Steve in an underground mining accident in 1991.

The organisation has grown into an indispensable resource for families impacted by the inherent dangers of the mining profession.

The genesis of Miners' Promise was Helen's acute awareness of a significant void in systemic support for those left behind in the wake of mining tragedies. This awareness catalysed the creation of an organisation dedicated not just to immediate crisis management, but also to the long-term welfare of mining families.

It expanded in 2023, extending its reach Australia wide. Today, Miners' Promise is recognised for its comprehensive approach to support, providing immediate and sustained assistance across the mining community.

When tragedy strikes, Miners' Promise acts swiftly. Within hours, a response team leveraging deep industry experience coordinates immediate essential services tailored to the unique needs of affected families and those impacted onsite. This includes logistical support for funerals, financial assistance, and specialised grief and emotional support, ensuring that the initial shock and aftermath of a loss are managed with compassion, professionalism and unmatched expertise.

The organisation works closely with industry leaders to establish a baseline standard of care, aiming to ensure that every family receives equitable support. This initiative helps families, leaders, and on-site teams cope with their immediate loss and fosters a broader culture of preparedness within the sector.

Beyond the immediate response, Miners' Promise is deeply invested in the long-term healing and resilience of mining families. The organisation offers ongoing support through specialised adult and child bereavement groups, empowering spouses of miners and their children to move through their grief, guided by experienced professionals.

The culture within mining companies is continually evolving, with an increasing recognition of the importance of mental health and appropriate emotional support. Miners' Promise is at the forefront of this cultural shift, guiding mining companies to integrate comprehensive psychosocial support into their emergency response plans and general wellness protocols.

Miners' Promise collaborates with employee assistance programs and mental health professionals to deliver training and workshops that address the specific challenges faced by those in the mining industry. These programs are designed to enhance understanding and provide practical tools for managing mental health post-incident and in ongoing high-pressure mining environments.

The complete versions of these articles and all other Minesite content is available in the digital version of the magazine. Scan the QR code to go to the digital edition or alternatively for more information about Minesite publication, please contact Peter Mizen at 0412 844 425.



Scan the QR code for the digital edition of Minesite.



Steeling a Dream



Stirling Steelworks fabricates a future

Tucked deep in the South West of Western Australia, in the bustling portside city of Albany, Stirling Steelworks is building big things.

What started in a backyard shed with a mobile set up on a ute, has grown to become a thriving steelworks business, with projects as far reaching as Geraldton, some 800kms away. It's the quintessential Aussie dream - turning a passion into a profitable business.

Stirling Steelworks is owned and operated by Sam Henry. The business services a wide range of industries including agriculture, construction, automotive, and drilling. Works involve sheet metal cutting, bending, and fabrication, along with heavy steel, aluminium, and stainless steel welding and fabrication.

"I don't think I could typify our fabrication services," said Sam, "we cover such a broad range of jobs and industries."

If their long list of completed jobs is anything to go by, they are certainly covering a very wide spectrum of metal work.



When asked about the company's ability to supply custom steel works, Sam replied, "Our customers regularly have their own set of needs. We are always willing to work together with them to make sure they get the final project that they're after."

One example of this was a large Stick Rake loader attachment. Used for cleaning up trees and vegetation, the attachment was manufactured from high tensile steel, before being powder coated and painted.

Another custom project that the team really enjoyed was a service truck that was designed and manufactured for Castle Drilling.



The service truck was an intricate job as it required many different components to fit and work together. The unit required 9 storage compartments, plus fitted rails and ladders for safety. Each component was meticulously planned, produced, and installed.

Stirling Steelworks employs a core team of experienced tradespeople, each holding a range of high risk tickets. Quality assurance is maintained by adhering to strict industry standards. Each project is checked at several intervals throughout the manufacturing process to ensure that the final product meets a high level of quality and safety standards.

With such a diverse range of projects comes an even more diverse set of challenges. When asked about the business' most challenging project, and how the challenge was resolved, Sam's response was candid and honest.

"I think the most challenging project so far has been raising a family and growing a business," he said. "I'm not sure that I could say the challenge has been resolved or finalised, with new challenges always arising. I find flexibility is the key."

And, there it is. It all comes back to family. Family run businesses account for 70% of all businesses in Australia. The drive to make a family business successful comes from the desire to build a legacy for the family. It is this desire that drives Stirling Steelworks to provide the highest quality workmanship, backed by outstanding service.

The future is looking shiny for Stirling Steelworks. The business has already cemented itself as a first class supplier in the Great Southern region, with plans to broaden its horizons further afield.

"We aim to maintain a steady growth projectile," said Sam. "We'd like to enlarge our footprint in the mining industry, whilst also designing and fabricating some key agricultural machinery. Primarily, we want to continue giving people great service where they require it the most."

If you'd like to find out more about Stirling Steelworks, or get a quote, go to www.stirlingsteelworks.com.au

A Matter of Customs



Left to right: Caris Watson-Ellard (ORH Group Sales General Manager), Kyle Detata (ORH Head of Operations), Richard Morosini (Major Motors Account Manager)

ORH Truck Solutions engineer excellence

First founded in 1997 as Orient Resource Holdings, ORH Truck Solutions has always held a clear mission: to revolutionise Australia's commercial vehicle manufacturing sector. With the growing demand for high-quality, durable, and customised commercial vehicles to support mining, construction, and civil works, the team recognised a gap in the market for reliable service trucks, water carts, tilt trays, and waste management vehicles. From that point onwards, ORH set out to provide superior products that could withstand the harshest environments and the most demanding industries.

Based in Hazelmere, Western Australia, ORH Truck Solutions remains a proudly family-owned and 100% Australian-owned business. It is led by CEO Jamie Detata and Head of Operations Kyle Detata, with a dedicated team committed to delivering excellence in manufacturing, innovation, and customer service.

Creating Commercial Solutions

Over the years, ORH Truck Solutions has expanded its product line to offer a comprehensive selection of commercial vehicles:

- **Tray Trucks:** Versatile and durable trucks designed for transporting a variety of loads, making them ideal for construction, logistics, and general transport applications.
- **Service Trucks:** Designed for field maintenance and repairs in mining and construction.
- **Water Carts:** Used for dust suppression, road maintenance, and fire-fighting support.
- **Waste Management Trucks:** Built for efficient collection and disposal of commercial waste.
- **Tipper Trucks and Trailers:** Essential for bulk material transportation.
- **Tilt Trays:** Versatile transport vehicles designed for safely loading and unloading heavy equipment, machinery, and vehicles with ease.
- **Custom-Built Vehicles:** Tailored solutions to meet the specific needs of clients.

The ORH team prides itself on quality craftsmanship and their ability to tailor builds that incorporate innovative technologies, to enhance customers' efficiency. Working closely with clients, specialised vehicles can be designed to meet unique operational needs.

While completely customisable, all trucks are manufactured with precise engineering to ensure that each vehicle meets stringent industry regulations, as well as Australian safety and environmental standards. Equipped with advanced powertrains, efficient fuel systems, and rugged components, ORH products are inherently Australian designed; built to endure and excel in the country's toughest conditions.

Building on Innovation

Innovation in design and engineering is a key attribute of the ORH brand. ORH's ability to offer state-of-the-art technology with a competitive price tag, hinges on their innovative practices.

Latest releases that showcase these practices, include the ORH Next-Generation Water Carts, equipped with smart flow control systems to optimise water usage; Hybrid-Powered Service Trucks that reduce fuel consumption and emissions, and; Advanced Waste Management Trucks, featuring automated loading and real-time monitoring systems.

These advancements not only enhance operational efficiency but also contribute to sustainability and environmental responsibility within commercial sectors. The ORH team place great value in research and development and will continue to invest in it, to remain ahead of industry trends.



Looking Ahead

As a family-owned business, ORH Truck Solutions prides itself on its strong values of integrity, teamwork, and excellence. Together, they have navigated economic fluctuations, evolving industry regulations, and the increasing demand for sustainable solutions which have seen the continuous adaptation of products. The company attributes their ability to adapt in an ever-evolving industry, as the reason for solidifying ORH as a trusted name in commercial vehicle manufacturing.

The team also credits long-standing industry relationships, such as those of Major Motors who supply the cabs of ORH vehicles, and Brooks Hire who purchase ORH products for their Hire department, as instrumental in growing the ORH Brand.

Looking ahead, ORH Truck Solutions is focused on continual expansion, with additional product offerings scheduled to hit the market in 2025. A dedicated Service Department is currently being established, to provide enhanced support and maintenance, and ensure the longevity and reliability of ORH products.

Already a leading manufacturer in Western Australia, the ORH team are now looking to cement a firm footprint along the east coast, by bringing enhanced service capabilities to the Eastern States. Additionally, ORH plan to bring Australian-made quality globally, with a planned expansion into international markets.

Over the years, the company has celebrated significant milestones, including reaching the production of over 300 vehicles annually and expanding its footprint nationwide. With a steadfast commitment to excellence, ORH Truck Solutions looks to continue leading the industry; providing innovative and reliable solutions for the mining, construction, and waste management sectors.

For more information, visit orh.net.au



The Future is H₂ Green

Murchison Green Hydrogen Project

As Australia pushes for net zero by 2050, effective methods of decarbonisation are increasingly explored to meet the country's energy demand and environmental targets.

While electrification remains the most affordable form of renewable energy, hard-to-electrify industries such as steel, cement, chemicals, aviation and shipping, require alternative solutions to abate their carbon footprint. In such industries, renewably sourced hydrogen is an alternative answer.

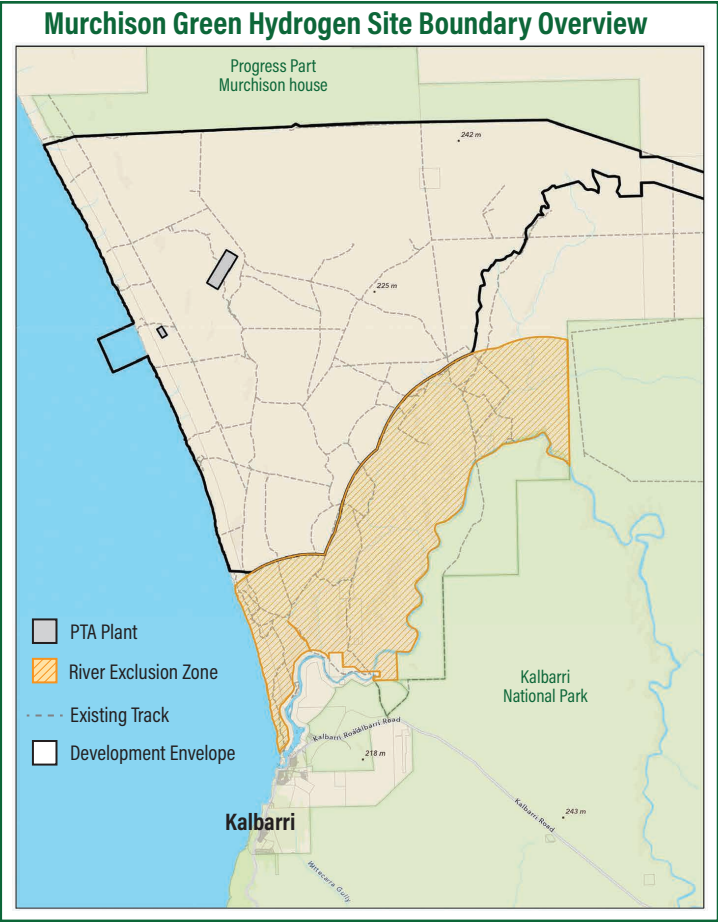
Approximately 20km north of the coastal town of Kalbarri, in the Murchison area of WA's Mid West region, the Murchison Green Hydrogen (MGH) project is being established. Using onshore wind and solar energy, the facility will produce green hydrogen – a renewable energy source with the ability to reduce the world's reliance on fossil fuels, and lower emissions.

The Colour of Hydrogen

Hydrogen is the most abundant element in the universe, and as an energy source, has been utilised for close to 200 years. First discovered in 1766, hydrogen is now categorised by a variety of colours, with each colour attributed to its source of production and method of separation from this source.

The most widely used hydrogen colour variant is grey: often used in ammonia and methanol production, steel manufacturing and petroleum refining. Derived from fossil fuels, it employs the most carbon-intensive production process, emitting significant levels of carbon dioxide during production.

Carbon dioxide (CO₂) remains the leading greenhouse gas contributing to human-induced global warming. When observing the latest Global Carbon Budget (2024), the CSRIO report that "the total global fossil fuel carbon dioxide emissions in 2024 increased by 0.8 per cent, hitting a record 37.4 billion tonnes."



Although grey hydrogen is the cheapest form to produce and most readily available with established supply chains, its production is unsustainable due to its reliance on finite resources and evolving global environmental policies.

Like its grey counterpart, blue hydrogen is created using steam methane reformation. This process brings together natural gas and heated water in the form of steam, with CO₂ as a by-product.

What sets blue hydrogen apart, is the additional Carbon Capture and Storage (CCS) process. Where grey hydrogen production releases CO₂ into the atmosphere, blue hydrogen traps it and through CCS technology, permanently stores it underground. While blue hydrogen is less carbon intensive than grey hydrogen, it still relies on natural gases and results in 'fugitive' emissions from leaked methane during the extraction, transportation and processing of them.

Green hydrogen, on the other hand, has zero carbon emissions. The process of electrolysis – using an electrical current to break down water molecules into hydrogen and oxygen – produces only water vapor when it burns.



The MGH Project

The MGH project comprises of an onshore wind and solar farm, desalination plant, green hydrogen production facility – including an electrolyser and ammonia plant, and a marine export facility. Currently the most advanced project of its kind in Australia, it's leading the development of large-scale green hydrogen in Western Australia.

Western Australia's solar and wind resources, and proximity to key offtake markets – specifically in the Murchison Region – make it an ideal location for green hydrogen production. The on-site wind turbines and solar farm will produce reliable renewable energy to power the production of green hydrogen, as well as transform green hydrogen into green ammonia. Once in the form of ammonia, it will be exported to markets in Asia.

Transporting Ammonia

As demand for hydrogen increases globally, some countries will have limited capability to produce it and will seek importation to meet their environmental targets. Australia's extensive renewable energy resources will position it with an internationally competitive production rate for exportation.

However, the MGH team explain that "whilst hydrogen gas can readily be transported by pipeline, it cannot efficiently be exported internationally in large quantities."

Thus, the MGH project will convert the green hydrogen into a liquid form to store and transport overseas.

"The process of liquefying green hydrogen requires temperatures of -253°C. This process is energy-intensive and not economically viable. Instead, MGH intends to convert its green hydrogen into liquid green ammonia, which liquifies at just -33°C, requiring significantly less energy.

"The liquid ammonia produced will be loaded onto ships, through a marine export facility, and transported to offtake markets. It will then be converted back into green hydrogen or used in its ammonia form as a replacement for fossil fuels."

Still to Come

As domestic and global markets transition away from fossil fuels, production of green hydrogen will continue to grow, particularly in hard-to-abate sectors. While the price of green hydrogen production is still high, technological advancements and infrastructure developments will see costs continue to decrease.

Chief Executive Officer for Minerals Council of Australia, Tania Constable, speaks on the necessity of green hydrogen to reach global emissions targets, and the steps Australia will need to take to get there. "Clean hydrogen plays a significant role in most scenarios under which the globe decarbonises by 2050," she says.

"Federal and state governments need to focus on removing regulatory barriers, including expediting approval processes for associated infrastructure like pipelines, hydrogen fuel stations and ammonia storage. The Australian resources sector will play a critical role in delivering the resources required for global decarbonisation."

The MGH project's Environmental Review Document was submitted at the end of 2024 and will be assessed for environmental approval by the EPA and State and Federal Ministers for Environment in 2025.

To find out more, visit murchisonrenewables.com.au





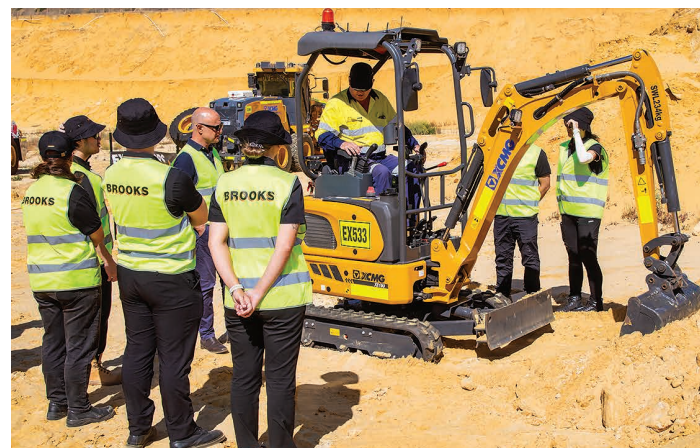
Customer Dig Day

Brooks Equipment bring their toys to the sand pit

In early March, Brooks Equipment Sales held a combined XCMG staff training event, and Customer Dig Day.

Over 20 pieces of XCMG machinery, including excavators from 1.9 tonnes to 50 tonnes, loaders, dump trucks, graders, rollers, skid steers, forklifts, and access equipment, were delivered to WA Limestone's Mandogalup Quarry for the event.

On Tuesday 4th, and Wednesday 5th March, 37 Brooks staff members from both Hire and Sales divisions, attended the quarry to receive specialist training on XCMG machinery. XCMG Operating Trainer, Kevin McDonald, taught Brooks staff the operation of various machines, along with technical features, and operator safety.



The XCMG Technical Development team were on hand to coach Brooks mechanical staff on machine service and maintenance, further enhancing their skills in this field.

When asked about her experience at the staff training event, Hire Team Manager, Karri Nankervis was very positive.

"It was a great experience for the whole hire team," said Karri. "Learning the technical and operational features of XCMG machines, is really beneficial when choosing the best machine for the job," she went on to explain. "We can now pass this knowledge on to our clients."

Overall, the staff training days were a great success, with 100% of attending staff giving it the thumbs up.

Customers were invited to "Test Drive Them All" over Thursday 6th, and Friday 7th March. To say the weather was warm was an understatement, but 87 customers braved the 37 degree heat to come down to the quarry for a drive.

When registering to attend the event, customers were invited to nominate the equipment that piqued their interest the most. By far the most popular two items of equipment were the XE500LC 50 tonne excavator, and the XC968 EV Electric Loader.

Travis Wilson from Fortescue was one of the many customers that came specifically to see the 50 tonne excavator. When asked about the difference between the XCMG excavator, and other brands that he has operated, Travis remarked, "The thing that stands out is the quickness, it's a very fast machine." He went on to add, "It's smooth and comfortable. I was impressed with the machine and I would definitely recommend XCMG to anyone looking to buy an excavator."

Dan Kavanagh from Goldfields Explosives visited the Dig Day to try out the XC968 EV Electric Loader. Speaking candidly with Dan, he commented, "Comparing it with the diesel option, the power feels the same but obviously it's a lot quieter. We've purchased three XCMG loaders previously, a 938, 948, and 958 - and they're all running well. They've been reliable working up in the Pilbara in some tough conditions. We'll be looking at the EV option going forward."



Feedback about the event garnered a lot of praise. Myles Lawler from ML Civil said, "It's great to see a company like Brooks bringing all the machines together for customers to try. There's not many other companies that would do this." He continued, "WA Limestone has given up a part of their pit for everyone to come and play around in, so it's really good."

On that note, Brooks would like to extend our sincere thanks to the Della Bona family at WA Limestone for so generously supporting the Dig Day event. Keep your eyes peeled for a future Dig Day.





The Tech Report

ARTICULATED DUMP TRUCK TYRES

This quarter, we are taking a closer look at OTR tyres specifically for articulated dump trucks. Respected manufacturer, Techking, offers three options for articulated dump truck tyres.

Key Features to consider:

TRA Code – This refers to the Tyre & Rim Association (TRA) classification system. These TRA Codes apply to the articulated dump trucks featured.

- **E1** - Rib Tread (highway service)
- **E2** - Traction tread (soft surfaces)
- **E3** - Rock Tread (moderate conditions)
- **E4** - Deeper Tread (severe rock conditions)
- **E5** - Extra Deep Tread (extreme rock conditions)



Load Index (LI) - The load index represents the maximum load capacity of the tyre.

- **180** - 8,000 kg
- **190** - 10,000 kg
- **200** - 14,000 kg
- **210** - 16,000 kg

Speed Symbol (SS) - The speed symbol is a letter that indicates the maximum speed at which the tyre can carry the load safely.

- **B** - 50 km/hr

Star Rating - OTR tyres are rated using a star rating system that indicates their load-carrying capacity and ply rating.

- ★ Standard load capacity (similar to 6-ply rating)
- ★★ Increased load capacity (approx. 12-ply rating)
- ★★★ High load capacity (approx. 18-ply rating)



TECHKING[®] SUPER ADT

Size	TRA Code	Rim Width & Flange	TREAD DEPTH 32nds mm		Load Index/Speed Symbol	Star Rating
29.5R25	E4	25.00-3.5	82	65	200 B	★★
33.25R29	E4	27.00-3.5	84	67	209 B	★★



TECHKING[®] PRO ADT

Size	TRA Code	Rim Width & Flange	TREAD DEPTH 32nds mm		Load Index/Speed Symbol	Star Rating
23.5R25	E3	19.50-2.5	46	36.5	185 B	★★
26.5R25	E3	22.00-3.0	53	42	193 B	★★
29.5R25	E3	25.00-3.5	54	43	200 B	★★



TECHKING[®] ETADT

Size	TRA Code	Rim Width & Flange	TREAD DEPTH 32nds mm		Load Index/Speed Symbol	Star Rating
23.5R25	E4	19.50-2.5	59	47	185 B	★★
26.5R25	E4	22.00-3.0	64	50.5	193 B	★★
29.5R25	E4	25.00-3.5	70	55.5	200 B	★★
29.5R29	E4	25.00-3.5	70	55.5	202 B	★★
600/65R25	E3	19.50-2.5	43	34.5	178 B	★★
650/65R25	E3	19.50-2.5	47	37	180 B	★★
750/65R25	E3	24.00-3.0	54	43	190 B	★★
875/65R29	E3	28.00-3.5	64	51	203 B	★★

Techking OTR tyres can be purchased through Brooks Equipment Sales. Visit www.brooksequipment.com.au



AgTech

Adapting Australian Agriculture

An industry synonymous with Australia's history, economy, and identity, agriculture accounts for over half of Australia's total land use. The industry's need to meet domestic demand while maintaining its role as a major global exporter of agricultural goods, requires the ability to sustain high productivity.

Agricultural technology – also known as AgTech – is a major accelerant of productivity and development in the industry. It encompasses advancements in innovative tools, techniques, and systems; granting farmers the ability to enhance their efficiency, profitability, environmental sustainability and long-term resilience.

The technology used includes drones, sensors, robotics, and automation in practices such as precision farming, automation, artificial intelligence, biotechnology, and data analytics. By utilising AgTech, farmers can achieve increased yields and more sustainable practices, which are vital to Australia's agricultural value.



The Numbers

Central to Australia's economy, agriculture contributes significantly to GDP, employment and export value. The Australian Bureau of Agricultural and Resource Economics and Sciences' (ABARES) Snapshot of Australian Agriculture 2025, highlights a variety of notable insights into the Australian agriculture industry:

- Australia's agriculture market has grown by 34% in the past 20 years.
- Exponential growth in the cropping sector is attributed to continued advances in technology which have ultimately achieved increased production rates. The livestock sector's growth reflects a growing demand for protein, and lower rates of production in meat importing countries due to temporary factors such as drought or disease.
- A major player in global agricultural exports, approximately 70% of Australia's agricultural, fisheries, and forestry production was exported in the 2021-22 to 2023-24 period. In 2023-24, these exports were valued at \$75.6 billion.
- Agriculture also represents a significant figure of Australian employment, with 274,900 people on average, employed by the Australian agricultural sector over the four quarters to November 2024.

AgTech in Practice

Australia's agriculture industry faces some of the toughest conditions in the world. Advancements in AgTech have proven exceptionally beneficial for farmers' efficiency, expenditure, and sustainability efforts, despite the extremely harsh and variable climate.

In 2024, Australian market research company, Roy Morgan, conducted a survey of 1,001 Australian farmers, finding that 72% currently use AgTech in their business.

Roy Morgan CEO, Michele Levine shared that "The most widely used AgTech is 'Farm management software' which covers everything from paddock mapping to animal genetics, feed inventory, water monitoring, and biosecurity planning."

Allowing farmers to streamline and more easily monitor operations, common features of Farm Management Software, include:

- **Crop and Livestock Tracking:** Monitor growth stages, health, and yields of crops or keeping track of livestock health, breeding, and performance.
- **Financial Management:** Managing expenses, income, budgeting, and profitability for better financial decision-making.
- **Inventory Management:** Tracking input supplies (seeds, fertilisers, pesticides) and farm equipment to ensure efficient resource use.
- **Field Mapping & GIS Integration:** Mapping out fields, tracking soil types, and integrating geographic information systems (GIS) for precision farming.
- **Data Analytics & Reporting:** Analysing farm data, generating reports, and gaining insights into trends, productivity, and performance.
- **Task Scheduling & Workforce Management:** Assigning tasks, tracking labour, and managing the workforce on the farm.
- **Weather Integration:** Accessing real time weather forecasts to make better decisions on planting, irrigation, and harvesting.
- **Regulatory Compliance:** Helping ensure that farming practices comply with environmental and government regulations.

From the Roy Morgan survey findings, Levine shared that "Other prominent AgTech includes 'electronic ID tags,' 'satellite technology,' 'precision farming,' 'drones,' and 'remote sensors' which provide detailed information to drive innovation and cost efficiencies throughout the farming environment."

Looking Ahead

Of the farmers surveyed by Roy Morgan, 6% reported having tried AgTech and discontinued its use. Michele Levine speaks on the barriers to its implementation: "The most commonly mentioned barrier – by 66% of farmers – is the 'high cost' surrounding many of these technologies. What is interesting to consider is that although 'high cost' is considered a barrier to adoption, cost savings are considered one of the main benefits for farmers who have taken the step and adopted AgTech."

Levine further surveyed that lack of information and a perception of the technology being unnecessary or of low benefit, were also common factors preventing farmers from adopting AgTech products. "These barriers to adoption appear to be mainly rooted in not understanding how exactly AgTech could improve the farming experience for these respondents," said Levine. "Businesses at the leading edge of AgTech may require a more targeted approach to reaching out to these farmers to find out what challenges they face and how the latest technologies could assist the growth of their business."

Funding for research and development (R&D) not only drives innovation and lowers costs but also accelerates the development of practical and scalable solutions. In 2023-24, Australian agricultural R&D funding was \$2.98 billion; with the private sector funding \$1.52 billion and public funding \$1.47 billion. The growth of expenditure within the private sector is rising at an average annual rate of 6.85% while the Australian Government and State Governments' R&D expenditure is dropping by 2.41% and 1.77% each year on average.

Looking ahead, further investment in R&D will help create more affordable and accessible technologies tailored to real-world farming challenges.

It can also support education and training, so farmers can effectively implement new agriculture technologies to adapt to climate challenges, reduce costs, and remain globally competitive.



New Equipment

THE BROOKS FLEET OF ASSETS

FOR HIRE



Komatsu WA500 Wheel Loader



Komatsu D65EXi Dozer



Hydrema 16kl Artic. Water Truck

FOR SALE



XCMG XG0807ACW Scissor Lift on Trailer



XCMG XC938 Tool Handler



Komatsu D71PXi Dozer



DRY HIRE or
BUY BRAND NEW
XCMG XE1350 121 tonne Excavator



XCMG GR2405T 12' Grader



XCMG XE155U Excavator



XCMG GR3505 16' Grader



XCMG XC978 Wheel Loader



Cat 972M Wheel Loader



XCMG XS205S Roller



XCMG XP265S Roller



Volvo L120F Tool Handler



SOLD



SOLD



SOLD



SOLD



Genie Z-60FE Hybrid Articulated Boom



Isuzu Service Truck



Isuzu FXZ Tipper Truck



Isuzu FYH 20kl Water Truck



SOLD



SOLD



SOLD



SOLD

Bringing in the Big Guns

XCMG creates a buzz on Australian mine sites



In 2024, the Brooks group of companies launched a new division: Brooks Mining. The introduction of the Brooks Mining division was to provide a dry hire service that specifically caters to mining clients and their needs.

Since then, Brooks Mining has been acquiring new large machinery for their hire fleet. This includes a range of XCMG machinery that has been specially designed and manufactured to Australian mine site standards.

XCMG equipment is relatively new to the Australian market, however, on an international scale, they are the third largest mining and construction equipment manufacturer in the world. Established in 1943, XCMG machines have been operating across Europe, North America, South America, Africa, and Asia for over 80 years.

When entering the Australian market, XCMG made a well planned inception through extensive research, and development of their machines, modifying components to suit Australian conditions and safety requirements.

Stirring up a lot of interest in the XCMG range, is their pure electric equipment. XCMG has been making exciting progress in the field of electric equipment, bringing new technology that is ahead of its competitors.

Australian mining company, Fortescue recognised the superiority of XCMG's electric equipment, recently signing a contract to purchase over 100 pieces of zero emissions heavy mobile equipment; a contract with a potential value of more than US\$400 million. Other major players in the mining industry that have recognised the quality of XCMG machinery and are using them on their sites include Rio Tinto and BHP.



The Brooks Mining fleet includes XCMG excavators, front endloaders, haul trucks, and graders, with more machines due to arrive soon. The equipment has been put to work in the Goldfields, Pilbara, and Kimberley regions of Western Australia - arguably some of the harshest mining environments in the world. Client feedback has been extremely positive, with many specifically requesting XCMG over other brands.

So what's the buzz around XCMG?

For many years Australia's mining and construction equipment sector has been dominated by two major brands. XCMG has brought a fresh breath of air to the industry by introducing a product that is equally reliable, and in some aspects, more advanced than its competitors.

"XCMG are leading the industry when it comes to technological advancements," said Brooks Managing Director, Stuart Brooks. "I've been to their manufacturing factories and they are doing some amazing things with automation and robotics."

"To borrow the phrase of a well known retail outlet, XCMG is 'good different'," said Mr Brooks.

From an operators perspective, XCMG controls can feel unfamiliar at first, however like anything new, it doesn't take long to learn the parameters of the new machine. From a production perspective, it absolutely makes sense to make the switch, with big savings in machine cost, productivity outcomes, and service costs.

For example, XCMG's mining excavators are designed to balance operator efficiency with minimised operation costs - all with the durability required by intensive mining applications. They are powered by Cummins engines, and built to deliver quality, reliability, and great value in equal measure.

XCMG XE1350 121 Tonne Excavator

This 121 tonne excavator is proving to be one of Brooks Mining's most sought after models on Australian minesites. Equipped with a 7m³ rock bucket for heavy-duty work, the Cummins QSK23 engine ensures strong power output during high-load operation leading to higher efficiency. The advanced exhaust dust extraction technology automatically removes dust from the air filter, extending the life of the filter element and reducing user costs.

Although not the heaviest of XCMG's mining excavators (that honour goes to the XE7000 672 tonne monster), the XE1350 is a versatile machine that can be easily transported and assembled on site.

"We've got contracts in place to ensure efficient machine assembly," said Mr Brooks. "We are also located right next to XCMG's Technical and Parts Centre, so we've got direct access to OEM parts as they're required," he continued.

Brooks has two brand new XE1350's in the yard. They are available for sale or dry hire.



XCMG GR3505 Grader

With a 16' mouldboard, the GR3505 is the third largest grader in the XCMG range. Characterised by its strong power, efficient operation, and comfortable and intelligent control performance, this grader is ideally used for heavy-duty soil and rock levelling in open pit mines, as well as material paving and side trenching. Weighing in at 32 tonnes, the GR3505 features a Cummins engine, electric double lever control, wet brake system, and hydraulic locking.

So, what are the customers saying? They're saying "yes" in overwhelming numbers. XCMG is the solution that the mining and construction sectors have been waiting for. The machines are slick, powerful, and reliable. Parts are readily available, and Brooks Mining has XCMG trained technicians for maintenance and repairs.

"If you're in the mining industry, and you've been wondering about XCMG, just pick up the phone and hire one," said Brooks Mining General Manager, Josh Willett. "The biggest mining players in Australia are choosing them, so you know the brand is performing well."

Brooks Mining ensures that all hire machines are dispatched to their customers' specifications. Give them a call on 1300 276 657 or email sales@brooksmining.com.au to have a chat about your requirements.





ACBC Chinese New Year Gala

Celebrating the year of the Snake, Brooks was proud to be a Silver Sponsor at the Roy Hill Chinese Lunar New Year Gala. Nearly 400 guests from the business community celebrated the event while watching the sunset over the Perth city skyline from Optus Stadium's unique River View Room. Thank you to our hosts, Australia China Business Council (ACBC), and China Chamber of Commerce Australia (CCCA).



CCF NSW Golf Day

The Civil Contractors Federation of New South Wales (CCF NSW) held their annual Golf Day on Friday, 28th February. The sold out event took place at Stonecutters Ridge Golf Club with Brooks taking a Hole Sponsorship, and two teams of staff and clients. Breakfast and registration commenced at 7am with a shot gun start at 8am. The games were followed by a lunch and prize presentation. No prizes for the Brooks team on this occasion but a great time was had by all. Many thanks to CCF NSW for holding a fantastic event.



ADIA Sundowner



Brooks has recently gained membership of the Australian Drilling Industry Association (ADIA). ADIA is an association for the drilling industry; providing training, resources, conferences and seminars, industry news, advocacy and more. Stuart Brooks and Troy Turner from Brooks Fleet attended the ADIA Sundowner on Thursday, 13th March.



Hawaiian Mental Health Awareness Golf Day



Organised annually by the Rotary Club of Matilda Bay, the 2025 Hawaiian Mental Health Awareness Golf Day was held at Cottesloe Golf Club on Friday, 7th March.

Brooks supports the event every year with a Team Sponsorship. Playing on behalf of Brooks in 2025, was Stuart Brooks, James Delcore, Mikayla Moulton, and Khong Tam. Unfortunately, the Brooks team were quite literally 'knocked out' of the competition early on when Mikayla took a golf ball to the head, knocking her unconscious. Fortunately she has made a full recovery and is already working on her swing for the next competition.

Hitting Balls for Balls!

Raising money for testicular cancer awareness, Brooks were proud to support the DT38 Charity Golf Day. Testicular cancer is the second most common type of cancer in Australian men aged 15-49. The DT38 Charity Golf Day was held on Friday, 21st March at Wembley Golf Course, with Stuart Brooks, Adrian Rorbach, Katie Usher, and Sam Ballantyne forming the Brooks team. After the 18 holes were completed a dinner took place at the Clubhouse involving a fantastic fundraising auction.



CCF WA 50th Sundowner



Congratulations to the Civil Contractors Federation of Western Australia (CCF WA) who are celebrating 50 years in operations. Members were invited to celebrate the occasion at a Sundowner on Thursday, 13 March 2025.

Lenore Brooks, Kai Li, and Katelyn Gibson attended on behalf of Brooks, with Lenore taking out the door prize of a \$1000 voucher to spend at Crown.

The Civil Contractors Federation WA represents, informs and connects civil contractors and associated businesses in the Western Australian civil construction industry. Their events provide an opportunity to people in the civil construction industry to network with their peers.



Apprenticeship Completion

Apprentices and trainees are vital to Australian businesses and their economic growth. Across its 21 branches, Brooks currently have 31 apprentices working towards their certification. In February, Brooks celebrated National Apprenticeship Week. This year's theme was 'Skills in Motion'; symbolic of the evolution of skills, knowledge and expertise that apprentices develop as they begin on their career path. During this period, Jared Connor completed his Certificate III in Mobile Plant Technology with Brooks Hire.



Jared Connor Port Hedland Branch, Trade Qualified HD Mechanic

What made you want to pursue a career path working in the mobile plant industry?
It wasn't a fluke but it just sort of happened. A friend of mine was doing it and from what he said, it sounded fun and like it'd be a good future. I didn't know what it'd be until I started, but it's been enjoyable.

What were the main tasks you completed during your apprenticeship?
A little bit of everything - everything from cleaning to repairs. Working with all of the equipment, I'm confident on all machines now and don't mind getting machines I'm not used to.

What has been your favourite aspect of the apprenticeship?
Learning new things and getting more confident: getting good at the work is really satisfying.

What has been the most challenging or rewarding aspect of the apprenticeship?
The most challenging and rewarding aspect is the time it takes to complete. It goes quickly and was fun, but it's also grueling.

What made you apply to complete your apprenticeship with Brooks?
Opportunity - Brooks was the first place I applied, and having been a TA here which I enjoyed, I then applied for the apprenticeship.

With a Certificate III in Mobile Plant Technology, what are your future goals?
I want to get into Field Service. I like Brooks and the workshop is good here, so I plan on staying in Port Hedland.

How will you be celebrating this milestone? I found out over Christmas so I've already done a bit of celebrating. That was pretty good.

International Women's Day

Celebrated on 8 March, International Women's Day gives focus to issues such as gender equality, reproductive rights, and violence against women. Brooks is proud to uplift, empower, and support our female employees.



Company Milestones

On Friday, 28th March, Brooks celebrated our 10 year anniversary employees with a BBQ at the Canning Vale branch. Staff were invited to enjoy a sausage sizzle and a cold drink, while sharing fond and funny memories of their work colleagues. At the BBQ, the Brooks family presented Jack Eyo, Josh Willett, and Dylan Prince with a framed certificate, machine mounted engraved plaque, and a bottle of something tasty to celebrate the occassion. Danielle, who lives on the east coast, had her certificate, plaque, and flowers delivered.

Jack Eyo - Start date: 11th November 2013
What was your first job at Brooks? Scan service/turnaround sheets.
What other roles have done while working for Brooks? Same role since the day I started working at Brooks.
What is your position now? National Parts Manager at Brooks Parts.
What is it about working for Brooks that keeps you here? The working culture and the environment that Brooks provided to not make you "hate" coming to your full-time job.
What is your favorite memory or experience working for Brooks? Pre-Covid, during the summer season when everyone helped organise the Christmas party at Canning Vale.



Danielle Thomson - Start date: 2nd December 2013
What was your first job at Brooks? Admin.
What other roles have done while working for Brooks? Accounts, although I have helped out in a lot of different areas in the past.
What is your position now? Admin.
What is it about working for Brooks that keeps you here? Everyone is super friendly, and the flexibility which is important being a Mum.
What is your favorite memory or experience working for Brooks? There's been way too many, but being able to travel to other branches was fun.
Anything else you'd like to add? Seeing Brooks grow, from what it was when I first started, to now is pretty amazing.

Josh Willett - Start date: 10th March 2014
What was your first job at Brooks? FIFO Diesel Mechanic
What other roles have done while working for Brooks? All of them... even cleaned the toilets, built walls, painted them, gardening - dead possum removal, I've done it all.
What is your position now? Brooks Mining General Manager
What is it about working for Brooks that keeps you here? The people.
What is your favorite memory or experience working for Brooks? Hedland, approx. 2014 partying on the weekend with the crew and having a blast.
Anything else you'd like to add? It's 11 years for me haha!



Dylan Prince - 2nd February 2015
What was your first job at Brooks? Apprentice Mechanic at Kalgoorlie.
What other roles have done while working for Brooks? Workshop Mechanic, Field Service Technician, Leading Hand, Workshop Foreman (Port Hedland), Field Service Coordinator.
What is your position now? Leading Hand - Canning Vale
What is it about working for Brooks that keeps you here? Working with a great group of people and good variety of equipment (every day is different).
What is your favorite memory or experience working for Brooks? My time working in the Pilbara. Although it was hot and humid 90% of the time, I had a great time working up there and met a lot of really good people along the way.
Anything else you'd like to add? Looking forward to what the future holds.

Welcome Aboard

Brad Allard

What was your first job:
Car Detailer at Pickles Auctions.

What is your role at Brooks:
Hire Coordinator - East.

What did you want to be when you were growing up: Tall.

What achievement in life are you most proud of: My 2 kids.

How would you describe yourself in 3 words:
Chilled, nervous, tired.

Where would we find you on the weekends:
Either at home or out camping somewhere.

What is something that you're really good at: Roller Hockey.

What is something that you're really bad at: Gardening.

If you could invite anybody to dinner (dead or alive), who would it be: Dane Swan or Craig McRae.

Favourite cake: Freddo Ice Cream Cake.

Favourite song: Anything by Linkin Park probably.

Favourite holiday destination: Coral Bay.



Matt Peirce

What was your first job:
Station hand on Edjudina Station.

What is your role at Brooks:
HC Truck Driver, Brooks Transport, Canning Vale WA.

What did you want to be when you were growing up: An Actor.

What achievement in life are you most proud of: Running the New York Marathon in 2015.

How would you describe yourself in 3 words:
Reliable, honest, adventurous.

Where would we find you on the weekends:
Home gardening or by the BBQ.

What is something that you're really good at: Shooting.

What is something that you're really bad at: Domestic duties.

If you could invite anybody to dinner (dead or alive), who would it be: Len Beadell.

Favourite cake: Vanilla Slice.

Favourite song: It always changes, currently "Da Funk" by Daft Punk.

Favourite holiday destination: New Zealand, anywhere around Te Anau.



Rory Fletcher



What was your first job:
Apprentice Mechanic / Cleaner on weekends.

What is your role at Brooks:
Leading Hand, Broome WA.

What did you want to be when you grew up: Airline Pilot.

What achievement in life are you most proud of: Completing my apprenticeship.

How would you describe yourself in 3 words: Positive, energetic, willing.

Where would we find you on the weekends:
Fishing (on the boat).

What is something that you're really good at:
Working on my cars.

What is something that you're really bad at:
Catching fish (ha-ha).

If you could invite anybody to dinner (dead or alive), who would it be: Doug Brooks.

Favourite Cake: Red Velvet / light sponge.

Favourite Song:
"King of the Mountain" by Midnight Oil.

Favourite holiday destination:
Exmouth / Coral Bay.

Jamel Checa

What was your first job:
Forklift Driver.

What is your role at Brooks:
Office Coordinator, Kewdale WA.

What did you want to be when you grew up:
NBA Superstar.

What achievement in life are you most proud of: Being a dad.

How would you describe yourself in 3 words:
Family over everything.

Where would we find you on the weekends:
The beach or pools.

What is something that you're really good at: Eating.

What is something that you're really bad at: Dieting.

If you could invite anybody to dinner (dead or alive), who would it be: My Mum.

Favourite Cake: Strawberry Cheesecake.

Favourite Song: "Sunshine" by Twista.

Favourite holiday destination: Philippines.



Natasha Bannerman

What was your first job:
Target Shop Assistant.

What is your role at Brooks: Parts Interpreter, Port Augusta SA.

What did you want to be when you grew up:
Juvenile Lawyer.

What achievement in life are you most proud of: Becoming a mechanic.

How would you describe yourself in 3 words:
Bubbly, outgoing, and driven.

Where would we find you on the weekends: Working on cars or outdoors, either traveling / camping / bike riding etc.

What is something that you're really good at:
Learning new things.

What is something that you're really bad at: Arts and craft.

If you could invite anybody to dinner (dead or alive), who would it be: My cousin (passed).

Favourite Cake: Chocolate Cake.

Favourite Song: "Believe" by The Bravery.

Favourite holiday destination: Northern Territory.



Michael Konecny



What was your first job:
Nightfill at Woolworths as a 12-year-old.

What is your role at Brooks:
Sales Representative, Brooks Equipment, Adelaide SA.

What did you want to be when you grew up: ASIO Spy.

What achievement in life are you most proud of: Raising my 20-year-old son on my own since he was 7. He's now in his 3rd year of Astrophysics at Adelaide University.

How would you describe yourself in 3 words: Loyal, respectful, determined.

Where would we find you on the weekends:
Having a relaxing lunch somewhere.

What is something that you're really good at:
Building / home improvements.

What is something that you're really bad at:
Cooking.

If you could invite anybody to dinner (dead or alive), who would it be:
Nostradamus... Get the winning X-Lotto numbers.

Favourite Cake: Black Forest Cake.

Favourite song:
"Wasn't Expecting That" by Jamie Lawson.

Favourite holiday destination: Vietnam.

Henessy Idang

What was your first job:
Woolies nightfill staff.

What is your role at Brooks:
Hire Administrator,
Canning Vale WA.

What did you want to be when you grew up:
Business Owner.



What achievement in life are you most proud of:
Ticking off all the items on my bucket list.

How would you describe yourself in 3 words:
Creative, driven, adventurous.

Where would we find you on the weekends:
At the beach with our Golden Retriever.

What is something that you're really good at: Arts and crafts.

What is something that you're really bad at: Drawing.

If you could invite anybody to dinner (dead or alive), who would it be: Franz Kafka.

Favourite Cake: Blueberry Cheesecake.

Favourite Song: Too many to mention.

Favourite holiday destination: Paris.

Mason Zappavigna

What was your first job:
Labourer – Steel manufacturing
for Steel Rainwater Company.

What is your role at Brooks:
Warehouse Storeperson,
Brooks Equipment, Welshpool
WA.

What did you want to be when you grew up:
Airforce Pilot or Firefighter.



What achievement in life are you most proud of:
Debut WAFL League, Round 1 Boundary Umpire, 2019.

How would you describe yourself in 3 words:
Honest, hardworking, and loyal.

Where would we find you on the weekends:
Home, beach, out on the trails running, hiking, cycling.

What is something that you're really good at:
Organisation skills.

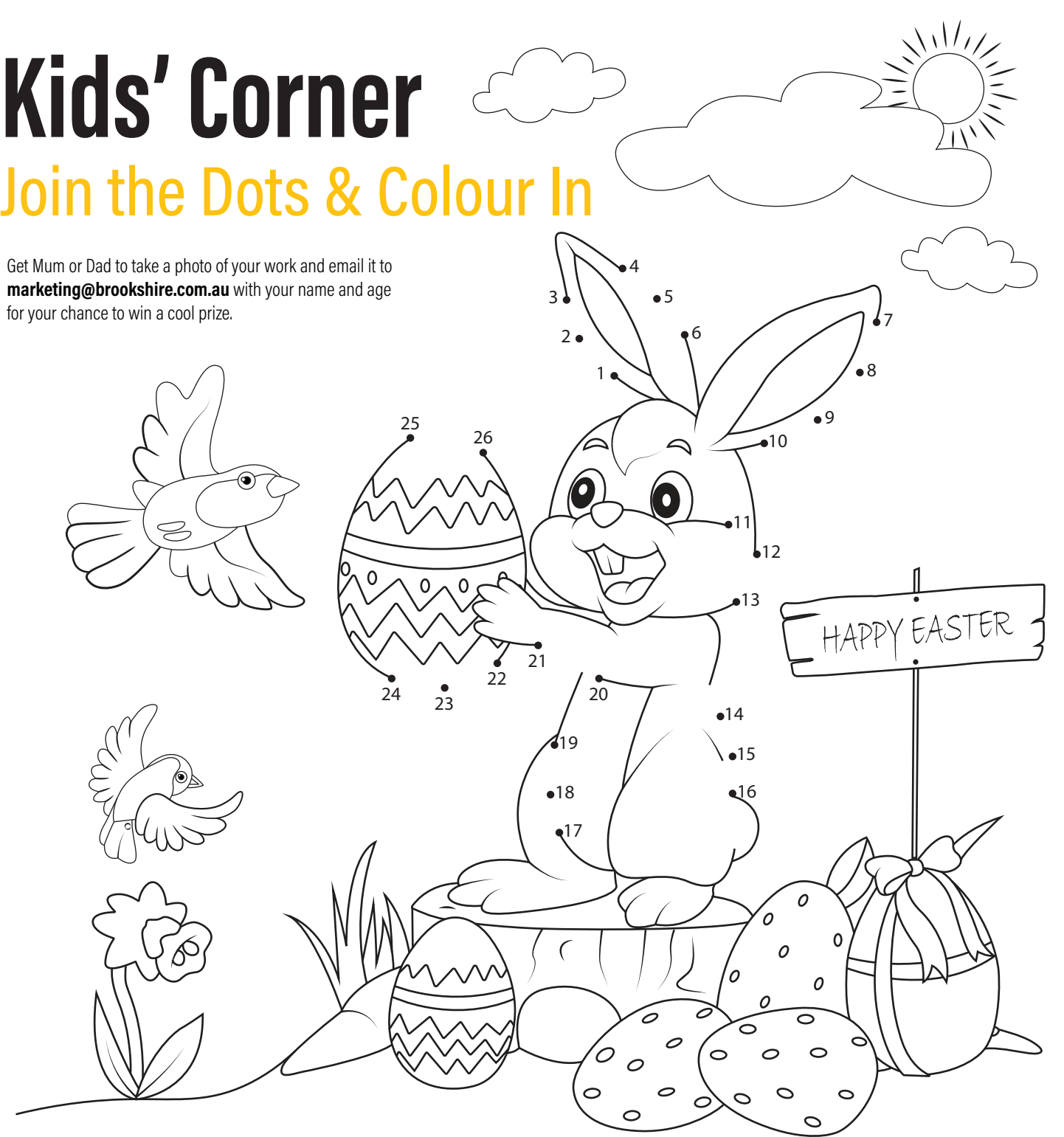
What is something that you're really bad at: Cooking skills.

If you could invite anybody to dinner (dead or alive), who would it be: Harrison Ford.

Favourite Cake: Lemon Cheesecake.

Favourite Song: "New Divide" by Linkin Park.

Favourite holiday destination: Singapore - Sentosa Island.



Get Mum or Dad to take a photo of your work and email it to marketing@brookshire.com.au with your name and age for your chance to win a cool prize.



Amber's Kitchen

Orange Lemon Cookies

Our Asset Coordinator, Amber Dobbie has shared her favourite cookie recipe. These delicious drops are gluten free, so you have permission to eat as many as you want!



INGREDIENTS

- 100g Almonds (blended)
- Zest from 1 x Orange (chopped finely)
- Zest from 1 x Lemon (chopped finely)
- 50g Caster Sugar
- 1 x Egg White

METHOD

1. Preheat oven to 180 degrees celcius.
2. Mix the blended almonds, orange zest, lemon zest, and caster sugar in a glass bowl.
3. In a separate bowl, blend the egg white until soft peaks form.
4. Fold the egg whites into the glass bowl with the other ingredients until the mixture is wet.
5. Line an oven tray with baking paper.
6. Spoon small amounts of the cookie mixture (3cm in diameter) into rows on the tray.
7. Bake for 35 minutes or until golden in colour.



Tigger Rodrigues - Age 6



Tom McCoy - Age 8



Indi-Rose Swart - Age 12



Jamieson Swart - Age 9



Milo Jones - Age 11

Congratulations to all of the winners from our last edition. You will all be receiving a prize in the post.



A white and yellow Cessna 441 Conquest II twin-engine propeller aircraft is being towed by a yellow tug on a wet tarmac. The aircraft has "BROOKS" and "WYOMING" written on the tail. A rainbow is visible in the overcast sky. A yellow cone is in the foreground.



C	E	O
C	A	H
L	O	T

Crossword

Sudoku

							1	5
				5	8		7	9
6		9						
	6	1	5		3	4	9	
			6		2			
	2	5		4		1		3
2				6	1			8
				7		9		1
3			8		5	2		6



Brain Teasers

THE ENEABBA - ISSUE 20 - AUTUMN 2025 **32**



WINNER
Steve Drage - Broome, WA



WINNER
Blake Hedley - Canning Vale, WA

Snap That

STAFF PHOTOGRAPHY COMPETITION

We couldn't choose between Steve's Milky Way, and Blake's multitude of great photos. So, there are two winners in this edition. Congratulations to both!



Rodnie Dubrea - Darwin NT



Leon Poelma - Perth WA



Leon Poelma - Perth WA



Rory Fletcher - Broome WA



Blake Hedley - Welshpool, WA



Blake Hedley - Port Hedland, WA



Hayden Rance - Bunbury, WA

Equipment Hire List

Excavators



CATEGORY	MAKE	MODEL
1.5 Tonne	Komatsu	PC14R
1.75 Tonne	Sany	SY16C
1.8 Tonne	XCMG	XE17U
1.8 Tonne	Caterpillar	301.8
1.85 Tonne	Sany	SY18C
2.26 Tonne	Caterpillar	302
2.76 Tonne	Sany	SY26U
3 Tonne	Komatsu	PC30MR
3 Tonne	Hitachi	ZX33
3.85 Tonne	Sany	SY35U
5 Tonne	Komatsu	PC55MR
5 Tonne	Komatsu	PC45MR
5 Tonne	Komatsu	PC40MR
5.3 Tonne	Sany	SY50U
6.1 Tonne	Sany	SY60C
7.28 Tonne	Sany	SY75C
8 Tonne	Komatsu	PC78MR
8.5 Tonne	Komatsu	PC88MR
8.8 Tonne	Sany	SY80U
9 Tonne	Caterpillar	308CR
9.1 Tonne	Sany	SY95C
14 Tonne	Komatsu	PC138US
14 Tonne	Komatsu	PC160LC
14 Tonne	Hyundai	R140LC
15.1 Tonne	Sany	SY135C
16 Tonne	Sany	SY155U
16 Tonne	Hitachi	ZX160LC
22 Tonne Zero Swing	Komatsu	PC228US
22 Tonne	Caterpillar	320GC
22 Tonne	Caterpillar	320DL
22 Tonne	Hitachi	ZX210H
22 Tonne	Komatsu	PC200LC
22 Tonne	Komatsu	PC210LCi
22 Tonne	Komatsu	PC210LC
22 Tonne	Komatsu	HB215LC
22.6 Tonne	Sany	SY215C
23 Tonne	Komatsu	PC220LC
23 Tonne	Hitachi	ZX225USLC
30 Tonne	Volvo	EC290CLC
30 Tonne	Komatsu	PC270LC
31.5 Tonne	Sany	SY305H
33 Tonne	Hitachi	ZX330
33 Tonne	Hitachi	ZX350H
34 Tonne	Komatsu	PC300LC
35 Tonne	Hitachi	ZX350LC
36 Tonne	Komatsu	PC360LCi
36 Tonne	Komatsu	PC350LC
36.7 Tonne	Sany	SY365H

CATEGORY	MAKE	MODEL
37 Tonne	Caterpillar	336
45 Tonne	Komatsu	PC450LC
49.7 Tonne	XCMG	XE500LC
54.5 Tonne	Sany	SY500H
60 Tonne	Komatsu	PC600LC
76.2 Tonne	Sany	SY750H
78.6 Tonne	Sany	SY870H
80 Tonne	Komatsu	PC850-8E0SE
85 Tonne	Komatsu	PC800LC
121 Tonne	XCMG	XE1350
192 Tonne	XCMG	XE2000
285 Tonne	XCMG	XE3000
384 Tonne	XCMG	XE4000
570 Tonne	XCMG	XE5600
672 Tonne	XCMG	XE7000



Graders

CATEGORY	MAKE	MODEL	WEIGHT
12' Motor Grader	Komatsu	GD555	8 Tonne
12' Motor Grader	Caterpillar	120M	14.5 Tonne
12' Motor Grader	XCMG	GR2405T	17.5 Tonne
12' Motor Grader	XCMG	GR2605T	19 Tonne
14' Motor Grader	Caterpillar	140M	18.4 Tonne
14' Motor Grader	Caterpillar	140M AWD	18.4 Tonne
14' Motor Grader	Caterpillar	140H	18.4 Tonne
14' Motor Grader	Caterpillar	140G	18.4 Tonne
14' Motor Grader	Caterpillar	150 AWD	19.8 Tonne
14' Motor Grader	Komatsu	GD655	18.5 Tonne
14' Motor Grader	John Deere	770G	19.3 Tonne
14' Motor Grader	John Deere	672G	20 Tonne
14' Motor Grader	John Deere	772GP	20.5 Tonne
15' Motor Grader	XCMG	GR3005T	28.5 Tonne
16' Motor Grader	John Deere	872GP	21.6 Tonne
16' Motor Grader	Caterpillar	16MQLR	30 Tonne
16' Motor Grader	XCMG	GR3505T Pro	32 Tonne
24' Motor Grader	Caterpillar	24	73 Tonne
24' Motor Grader	XCMG	GR5505	74 Tonne



Front End Loaders

CATEGORY	MAKE	MODEL
1.5m³	Komatsu	WA150
2.1m3	XCMG	XC938
2.1m³	Caterpillar	930K
2.5m³	Komatsu	WA250
3.1m³	Komatsu	WA320
3.2m3 Electric	XCMG	XC968_EV
3.5m³	Komatsu	WA380
3.75m³ - 4m³	Komatsu	WA430
3.4m³	Caterpillar	950M
3.5m3	XCMG	XC958
3.6m³	Caterpillar	962M
4m³ - 5m³	Komatsu	WA470
4.5m3	XCMG	XC978
5m³	Komatsu	WA480
4m³ - 5m³	Volvo	L150G
4.7m³ - 6.4m³	Komatsu	WA500
5.6m³	Caterpillar	980M
5.6m³	Caterpillar	982M
5.6m³	Hitachi	ZW370
6.4m³	Caterpillar	988K
6.4m³	Komatsu	WA600
6.5m3	XCMG	LW1200KN
7m³	Volvo	L260H
13m³	Komatsu	WA900



Tool Carriers

CATEGORY	MAKE	MODEL
2.2m³ - 2.3m³	Komatsu	WA250PT
2.2m³ - 2.3m³	Komatsu	WA250PZ
1.9m³ - 2.7m³	Komatsu	WA270
2.5m³ - 2.7m³	Komatsu	WA320-8
2.5m³ - 2.7m³	Komatsu	WA320PZ-6
2.5m³ - 2.7m³	Volvo	L90F
3m³	Volvo	L110F
3.1m3	Hitachi	ZW180-5
3.5m³	Volvo	L120F
4.2m³	Volvo	L150F
4.4m³	Volvo	L180F
5.2m³	Volvo	L220H



Site Dumpers

CATEGORY	PAYLOAD	MAKE	MODEL
Side Tipper	9 Tonne	Wacker Neuson	DV90
Front Tipper	9 Tonne	Thwaites	9T Dumper



Skid Steer Loaders

CATEGORY	MAKE	MODEL	TIPPING LOAD (35%)
Tracked	Bobcat	T140SJC	635kg
Tracked	Caterpillar	239D	695kg
Tracked	Caterpillar	249D	790kg
Tracked	Caterpillar	259D	915 kg
Wheeled	Komatsu	SK714	650kg
Wheeled	Caterpillar	226B	680kg
Wheeled	XCMG	XC7-SR07	890kg
Wheeled	XCMG	XC7-SR08	955kg
Wheeled	Caterpillar	246C	975kg
Wheeled	XCMG	XC7-SR10	1100kg
Wheeled	XCMG	XC7-SR12	1260kg
Tracked	XCMG	XC-SR13	3880kg



Dozers

CATEGORY	MAKE	MODEL	BLADE WIDTH
17.3 Tonne	Caterpillar	D6N	4080mm
17.4 Tonne	XCMG	D170	3455mm
17.7 Tonne	Caterpillar	D6H	4486mm
21 Tonne	Caterpillar	D6T XL	3693mm
21 Tonne	Caterpillar	D6T LGP	3693mm
24.6 Tonne	XCMG	D260	3725mm
27 Tonne	Caterpillar	D7	3988mm
35.6 Tonne	XCMG	D360	4130mm
39.4 Tonne	Caterpillar	D8	5045mm
70 Tonne	Caterpillar	D10T	7416mm



Backhoes

DIG DEPTH	MAKE	MODEL	WEIGHT
4.32m	JCB	4CX	8.178 Tonne
4.8m	Komatsu	WB97R-5E0	7.6 Tonne
4.883m	Caterpillar	432E	9.1 Tonne
6.14m	JCB	5CX	10.6 Tonne



Articulated Dump Trucks

CATEGORY	PAYLOAD	MAKE	MODEL
Articulated	30 Tonne	XCMG	XDA30
Articulated	30 Tonne	Komatsu	HM300
Articulated	37 Tonne	Hitachi	AH400D
Articulated	40 Tonne	Komatsu	HM400
Articulated	41 Tonne	Caterpillar	745
Articulated	41 Tonne	XCMG	XDA45



Rollers

CATEGORY	WEIGHT	MAKE	MODEL
Smooth Drum	7 Tonne	Bomag	BW177DH
Smooth Drum	11 Tonne	Dynapac	CA252D
Smooth Drum	11 Tonne	Bomag	BW212D
Smooth Drum	12 Tonne	Hamm	3412 HT V10
Smooth Drum	12 Tonne	Caterpillar	CS64B
Smooth Drum	12 Tonne	Bomag	BW213D
Smooth Drum	12.5 Tonne	Caterpillar	CS56B
Smooth Drum	12.7 Tonne	Dynapac	CA302D
Smooth Drum	13.2 Tonne	Dynapac	CA362D
Smooth Drum	12.6 Tonne	Bomag	BW213D
Smooth Drum	14.3 Tonne	Caterpillar	CS68B
Smooth Drum	15.7 Tonne	Hamm	3516
Smooth Drum	16 Tonne	Caterpillar	CS74B
Smooth Drum	16 Tonne	Caterpillar	CP76B
Smooth Drum	16.1 Tonne	Bomag	BW216D
Smooth Drum	17.89 Tonne	Hamm	3518
Smooth Drum	18.7 Tonne	Caterpillar	CS78B
Smooth Drum	19.3 Tonne	Dynapac	CA6000D
Smooth Drum	19.8 Tonne	Hamm	3520
Smooth Drum	20 Tonne	Caterpillar	CS79B
Smooth Drum	26 Tonne	XCMG	XS263J
Padfoot	12 Tonne	Caterpillar	CS12 GC
Padfoot	12 Tonne	Caterpillar	CS56B
Padfoot	12 Tonne	Bomag	BW211D
Padfoot	12.6 Tonne	Bomag	BW213D
Padfoot	13.2 Tonne	Dynapac	CA362D
Padfoot	15.7 Tonne	Hamm	3516P
Padfoot	16.1 Tonne	Bomag	BW216PD
Padfoot	17.6 Tonne	Caterpillar	CP76B
Padfoot	17.89 Tonne	Hamm	3518P
Padfoot	18 Tonne	Dynapac	CA6000PD
Padfoot	18.6 Tonne	Dynapac	CA602PD
Padfoot	19.4 Tonne	Bomag	BW219PD
Padfoot	19.8 Tonne	Hamm	3520P
Padfoot	26 Tonne	XCMG	XS263
Multi Tyre	18 Tonne	Hamm	HP280
Multi Tyre	18 Tonne	Caterpillar	CW34
Multi Tyre	18.3 Tonne	Hamm	GRW280
Multi Tyre	20 Tonne	Caterpillar	CW34
Multi Tyre	20 Tonne	Ammann	AP240
Multi Tyre	20 Tonne	Bomag	BW24RH
Multi Tyre	20 Tonne	Bomag	BW25RH
Multi Tyre	24 Tonne	Caterpillar	CW34LRC
Double Drum	765 Kg	Husqvarna	LP 6505
Double Drum	1 Tonne	Husqvarna	LP 7505
Double Drum	2.5 Tonne	Caterpillar	CB2.7
Double Drum	2.6 Tonne	Hamm	HDI2VV
Double Drum	2.8 Tonne	Bomag	BW120AD
3 Pin Static	14 Tonne	Aveling Barford	DC014

CATEGORY	WEIGHT	MAKE	MODEL
Trench Roller	1,340 Kg	Ammann	1575
Trench Roller	1,495 Kg	Wacker Neuson	RTX-SC3
Trench Roller	1,595 Kg	Dynapac	D.ONE 850
Trench Roller	1,675 Kg	Husqvarna	LP9505



Compactors & Tampers

CATEGORY	WEIGHT	MAKE	MODEL
Tampers	98kg	Husqvarna	LT800
Plate Compactors	185kg	Husqvarna	LG164
Plate Compactors	244kg	Husqvarna	LG204
Plate Compactors	302kg	Husqvarna	LG300
Plate Compactors	436kg	Husqvarna	LG400
Plate Compactors	500kg	Bomag	BPR 70/70D
Plate Compactors	500kg	Dynapac	LG500
Plate Compactors	750kg	Bomag	BPR 100/80
Plate Compactors	750kg	Dynapac	LH700
Plate Compactors	800kg	Husqvarna	LH804



Compressors

TYPE	AIR FLOW	DRY WEIGHT	PRESSURE
Trailer	127 cfm	700 kg	7 bar
Trailer	176.5 cfm	800 kg	7 bar
Skid	185 cfm	950 kg	7 bar
Trailer	251 cfm	1400 kg	7 bar
Skid	400 cfm	1920 kg	10 bar
Trailer	423 cfm	2000 kg	7 bar
Trailer	530 cfm	2600 kg	10 bar
Trailer	893 cfm	3700 kg	8 bar
Trailer	938 cfm	5300 kg	12 bar
Trailer	1020 cfm	5300 kg	10.3 bar
Trailer	1102 cfm	5300 kg	8.6 bar



Water Trucks

CATEGORY	CAPACITY	MAKE	MODEL
Rigid	14,000 L	Isuzu	FVZ 260-300
Rigid	14,000 L	Hino	500
Rigid	15,000 L	Isuzu	FVZ 260-300
Rigid	15,000 L	Hino	500
Rigid	15,000 L	Mercedes Benz	Axor
Rigid	20,000 L	Isuzu	FYH 2000 8x4
Rigid	20,000 L	Iveco	Trakker AD450 6x6
Articulated	16,000 L	JCB	Fastrac 185/65
Articulated	16,000 L	Chamberlain	C6100
Articulated	16,000 L	Mercedes Benz	MB Trac
Articulated	26,000 L	Komatsu	HM300
Articulated	35,000 L	Komatsu	HM400



Service, Fuel & Tipper Trucks

CATEGORY	CAPACITY	MAKE	MODEL
Service Truck	8 Compartments	Isuzu	FVZ 260 - 300
Service Truck	8 Compartments	Hino	500
Fuel Trailer	1,400 L	-	-
Fuel Trailer	2,000 L	-	-
Fuel Truck	14,000 L	Hino	500
Tipper Truck	11m³	Isuzu	FVZ 260-300
Tipper Truck	11m³	Hino	500
Tipper Truck	11m³	Isuzu	FVZ 1400
Side Tipper	21m³	Howard Porter	-
Side Tipper	24m3	Road West	-



Telehandlers

LIFTING WEIGHT	MAKE	MODEL	LIFTING HEIGHT
3 Tonne	JCB	531-70	7000mm
3.2 Tonne	Manitou	MT732	6900mm
3.5 Tonne	JCB	535-95	9500mm
4 Tonne	JCB	541-70	7000mm
4 Tonne	Merlo	TF42.7-100	9500mm
4 Tonne	Manitou	MT-X 1440	13530mm
4 Tonne	Manitou	MT-X 1840	17550mm
6 Tonne	Merlo	P60.10EE	9550mm



Forklifts

LIFTING HEIGHT	MAKE	MODEL	LOAD CAPACITY
3000 mm	Hyster	H4.0FT	4 Tonne
4000 mm	Hyster	H5.0FT	5 Tonne
5336 mm	Hyster	H8.00XM	8 Tonne
6200 mm	Hyster	H16.00XM	16 Tonne
4,000 mm	XCMG	XCF1612KII	16 Tonne



Cranes

MAKE	MODEL	WEIGHT	MAXIMUM BOOM LENGTH
Franna	AT22	22 tonnes	17.9m
Franna	MAC 25	25 tonnes	18.4m



Articulated Boom Lifts

HEIGHT	MAKE	MODEL	CATEGORY
34 ft	JLG	H340AJ	Hybrid
34 ft	Genie	Z34 / 22 N	Electric
45 ft	JLG	450AJ	Diesel
45 ft	Genie	Z-45 XC	Rough Terrain
51 ft	Genie	Z-51 / 30J RT	Rough Terrain
62 ft	Genie	Z-62 / 40	Rough Terrain
80 ft	JLG	H800AJ	Hybrid
80 ft	JLG	800 AJ	Diesel
80 ft	Haulotte	HA26 RTJ PRO	Diesel
80 ft	Genie	Z-80 / 60	Rough Terrain
87.3ft	XCMG	XGA26K	Rough Terrain
125 ft	JLG	1250AJP	Diesel
135 ft	Genie	ZX-135 / 70	Rough Terrain



Scissor Lifts

HEIGHT	MAKE	MODEL	CATEGORY
19 ft	JLG	ES1932	Electric
19 ft	JLG	R1932	Electric
26 ft	JLG	R2632	Electric
26 ft	Genie	GS-2632	Electric
26 ft	Genie	GS2669 RT	Rough Terrain
32 ft	JLG	ES 3246	Electric
32 ft	JLG	R 3246	Electric
33 ft	Genie	GS 3369 RT	Rough Terrain
33 ft	Genie	GS 3384	Rough Terrain
33 ft	Snorkel	S3370 RT	Rough Terrain
40 ft	JLG	R 4045	Electric
40 ft	Genie	GS-4069 RT	Rough Terrain
40 ft	XCMG	XG1218RT	Rough Terrain
43 ft	Genie	GS-4390	Rough Terrain
46 ft	Genie	GS-4655	Electric
47 ft	JLG	ERT 4769	Rough Terrain
50 ft	XCMG	XG1523RT	Rough Terrain
53 ft	Genie	GS-5390	Rough Terrain
60 ft	XCMG	XG1823RT	Rough Terrain



Telescopic Boom Lifts

HEIGHT	MAKE	MODEL	CATEGORY
45 ft	Genie	S-45 XC	Rough Terrain
65 ft	Genie	S65 XC	Rough Terrain
72.2 ft	XCMG	XGS22K	Rough Terrain
80 ft	Genie	S-80 XC	Rough Terrain
85 ft	Genie	S-85XC	Rough Terrain
125 ft	Genie	SX-125 XC	Rough Terrain
135 ft	Genie	SX-135 XC	Rough Terrain
150 ft	Genie	SX-150	Rough Terrain



Generators (Diesel and Hybrid)

POWER	OUTPUT	VOLTAGE	WEIGHT
5 kVA	5.5 kW	230V	95 kg
6 kVA	5.2 kW	240V	239 kg
10 kVA	8 kW	240V	391 kg
15 kVA	12.5 kW	240/415V	516 kg
20 kVA	16 kW	240/415V	703 kg
25 kVA	20 kW	240/415V	591 kg
30 kVA	24 kW	240/415V	950 kg
35 kVA	32 kW	240/415V	890 kg
40 kVA	35 kW	240/415V	900 kg
45 kVA	36 kW	240/415V	1085 kg
60 kVA	48 kW	240/415V	1110 kg
80 kVA	64 kW	240/415V	1403 kg
100 kVA	80 kW	240/415V	1685 kg
150 kVA	120 kW	240/415V	2000 kg
200 kVA	160 kW	240/415V	2440 kg
220 kVA	178 kW	240/415V	3670 kg
250 kVA	200 kW	240/415V	24500 kg
300 kVA	240 kW	240/415V	3068 kg
350 kVA	280 kW	240/415V	4439 kg
400 kVA	320 kW	240/415V	4400 kg
450 kVA	360 kW	240/415V	4597 kg
500 kVA	400 kW	240/415V	4800 kg
600 kVA	480 kW	240/415V	5970 kg
670 kVA	536 kW	240/415V	5970 kg
750 kVA	600 kW	240/415V	9200 kg
800 kVA	640 kW	240/415V	10000 kg
910 kVA	728 kW	240/415V	11600 kg
1035 kVA	828 kW	240/415V	11680 kg
1253 kVA	1002 kW	240/415V	14100 kg
1505 kVA	1204 kW	240/415V	14050 kg
1705 kVA	1364 kW	240/415V	15500 kg
2000 kVA	1600 kW	240/415V	16000 kg

*All Generators under 100 kVA are available on trailers.



Diesel Pumps Highhead

INLET SIZE	OUTLET SIZE	Q MAX	MAX HEAD
100 mm	75 mm	40 L/sec	200 m
100 mm	80 mm	42 L/sec	92 m
150 mm	75 mm	50 L/sec	150 m
150mm	100 mm	80 L/sec	180 m
150 mm	100 mm	117 L/sec	101 m
200 mm	150 mm	167 L/sec	101 m
250 mm	200 mm	250 L/sec	70 m
250 mm	200 mm	408 L/sec	109 m



Diesel Pumps Surface Dewatering

SIZE	Q MAX	MAX HEAD
80 mm	45 L/sec	19 m open and silent option
100 mm	69 L/sec	36 m open and silent option
100 mm	77 L/sec	50 m open and silent option
150 mm	150 L/sec	37 m open and silent option
150 mm	141 L/sec	51 m open and silent option
All Pumps under 150 mm size are available on trailers		
200 mm	175 L/sec	30 m open and silent option
200 mm	236 L/sec	50 m open and silent option
300 mm	313 L/sec	29.5 m open and silent option
300 mm	600 L/sec	71 m open and silent option



Submersible Pumps

TYPE POWER	SIZE	Q MAX	MAX HEAD
Dewatering 1 kW	50 mm	10 L/sec	16 m
Dewatering 2 kW	75 mm	14 L/sec	24 m
Dewatering 3.4 kW	75 mm	23 L/sec	23 m
Dewatering 6.6 kW	75 mm	20 L/sec	38 m
Dewatering 8.8 kW	75 mm	28 L/sec	40 m
Dewatering 6.6 kW	100 mm	37 L/sec	25 m
Dewatering 8.8 kW	100 mm	45 L/sec	30 m
Dewatering 14 kW	100 mm	20 L/sec	65 m
Dewatering 22 kW	100 mm	40 L/sec	65 m
Dewatering 30 kW	100 mm	40 L/sec	86 m
Dewatering 22 kW	150 mm	95 L/sec	40 m
Sludge 3.7 kW	75 mm	20 L/sec	13 m
Sludge 9 kW	100 mm	28 L/sec	23 m
Sludge 11 kW	100 mm	42 L/sec	24 m
Sludge 15 kW	100 mm	22 L/sec	27 m
Sludge 37 kW	100 mm	80 L/sec	50 m
Sludge 45 kW	150 mm	124 L/sec	30 m
Sludge 75 kW	150 mm	155 L/sec	48 m
Slurry 3.1 kW	75 mm	15 L/sec	15 m
Slurry 5.7 kW	100 mm	25 L/sec	23 m
Slurry 8 kW	100 mm	28 L/sec	25 m



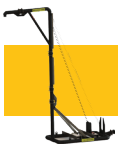
Battery Packs

FEATURES	METRICS
Nominated rated power	36 / 45 kW / kVA
Nominal Energy Storage Capacity	46 kWh
Rated Voltage (VAC)	400 / 230
Battery system voltage (VDC)	48
Nominal Rated Current (A)	65



Compressors

TYPE	AIR FLOW	DRY WEIGHT	PRESSURE
Trailer	127 cfm	700 kg	7 bar
Trailer	176.5 cfm	800 kg	7 bar
Skid	185 cfm	950 kg	7 bar
Trailer	251 cfm	1400	7 bar
Skid	400 cfm	1920 kg	10 bar
Trailer	423 cfm	2000 kg	7 bar
Trailer	530 cfm	2600 kg	10 bar
Trailer	893 cfm	3700 kg	8 bar
Trailer	938 cfm	5300 kg	12 bar
Trailer	1020 cfm	5300 kg	10.3 bar
Trailer	1102 cfm	5300 kg	8.6 bar
Electric Mobile	1286 cfm	2750 kg	5-14 bar



Pump Accessories

Materials and Parts can be supplied at cost price + 20%

DN150 Standpipe clearance 4.2m
DN150 Standpipe clearance 4.8m
DN150 Standpipe clearance 5.2m
DN150 Standpipe clearance 5.8m
DN150 Standpipe clearance 6.5m
DN150 Standpipe clearance 8.6m
DN200 Standpipe clearance 4.2m
DN200 Standpipe clearance 4.8m
DN200 Standpipe clearance 5.2m
DN200 Standpipe clearance 5.8m
DN200 Standpipe clearance 6.5m
DN200 Standpipe clearance 8.6m
Hose & Cable Floats
HDPE pipe
Pontoons
Flow Meters
Suction Hose
Discharge Hose
Remote Monitoring



Portable Buildings

TYPE	SPECIFICATIONS
Dome Shelters	custom-made
Portable site offices	6.09 m & 12.19 m options, fully furnished
Portable Lunchroom	6.09 m & 12.19 m options, fully furnished
Ablution Block	6.09 m x 2.43 m, 4 cubicles
Sea Containers	6.0 m x 2.5 m & 12.0 m x 2.5 m
Portable Toilets	1160 mm x 1160 mm x 230 mm
Portable Showers	1150 mm x 1150 mm x 230 mm



Lighting Towers Diesel & Solar

LAMP POWER	ILLUMINATED AREA	RUNNING TIME
1800 W	5000 / 500 m²	100 hours
4 x 320 W	4500 / 4200 m²	143 hours
4 x 320 W	5000 m²	218 hours
4 x 350 W	5000 m² @ 20 Lux	220 hours
4 x 350 W	5.4 lm /m² @ 28.328 m²	150 hours
6 x 350 W	315,000	145 hours
6 solar x 100 W	65,000	56 hours
2 solar x 100 W	14,000	35 hours



Power Accessories

TYPE	SIZE	OUTLET
Distribution Board	32 amp	8 x 240V 15A 1 x 415V 20A 1 x 415V 32A
Distribution Board	32 amp	8 x 240V 15A 1 x 415V 20A 1 x 415V 32A
Distribution Board	63 amp	10 x 240V 15A 2 x 415V 20A 2 x 415V 32A
Distribution Board	125 amp	8 x 240V 15A 2 x 415V 32A
Power Cables	20 amp	cable length can be customised
Power Cables	32 amp	cable length can be customised
Power Cables	63 amp	cable length can be customised
Power Cables	100 amp	cable length can be customised
Power Cables	Hardwire	cable length can be customised
Load Banks	100 - 500 kW	in all application

Control Panels, Soft Starters & Variable Speed Drivers are available.



Mobile Fuel Supply

TYPE	SIZE	COMMENTS
Fuel Tank	1000 L	Double bunded, multiple fuel connections
Trailer Mounted	1000 L	Double bunded, multiple fuel connections
Fuel Tank	2000 L	Double bunded, multiple fuel connections
Fuel Tank	4000 L	Double bunded, multiple fuel connections
Fuel Tank	10000 L	Double bunded, multiple fuel connections
Trailer Mounted	2000 L	Double bunded, multiple fuel connections

Plant Trailers, Tandem Trailers, Cage Trailers, Pressure Washer Trailers and Fire Fighter Trailer are also available for hire.



Solar Skid

FEATURES	METRICS
Power	1.78 kWp
Voltage (Voc)	196.8 v
Current (Isc)	11.45 A
Dimensions	4455 mm x 2240 mm x 300 mm
Weight	750 kg



Traffic Lights & Signage

CATEGORY	POWER SUPPLY
Traffic Lights	Nominal 12 Volts. Range 10.8 – 14.2V
Variable Message Signs	Nominal 12 Volts. Range 10.8 – 14.2V



Solar CCTV

MAKE	CAMERA
Solareye	2x4MP acusense deep learning cameras, 50m night vision



Solar Hydration Station

FEATURES

- Compatible with all 1000L single use water packs
- Optional 1500L fixed water storage tank
- Insulated enclosure to minimise direct sunlight exposure of water pack
- Easy access for forklift load/unload
- Flexible inlet hose with quick release connection



Dust Suppression Fans

MAKE	MODEL	ELECTRICAL ENGINE POWER
Generac	DF 4500	4kW
Generac	DF 7500	7.5kW
Generac	DF 15000	15kW
Generac	DF 20000	20kW
Generac	DF 50000	45kW
Generac	DF 110000	100kW



Commercial Vehicles

SEATS	CATEGORY	MODEL
12 & 22	Mine Spec Buses	Toyota HiAce/Coaster & VW Crafter
7	Mine Spec 4x4 Wagon	Toyota Land Cruiser & Prado
2 & 5	Mine Spec 4x4 SC & DC	Toyota Hilux & WorkMate
5	Mine Spec 4x4 DC Steel Tray	Mitsubishi Triton & Isuzu D-Max



Portable Steel Barrier

FEATURES	METRICS
Weight (12 m)	1155 kg
Weight (6 m)	562 kg (male) & 555 (female)
Lifting Capacity (6 m)	6.09 m & 12.19 m options, fully furnished
Lifting Capacity (6 m)	4.1 times the weight of 6 m Section.
Lifting Capacity (12 m)	2.0 times the weight of 12 m Section.



Bulk Water Storage

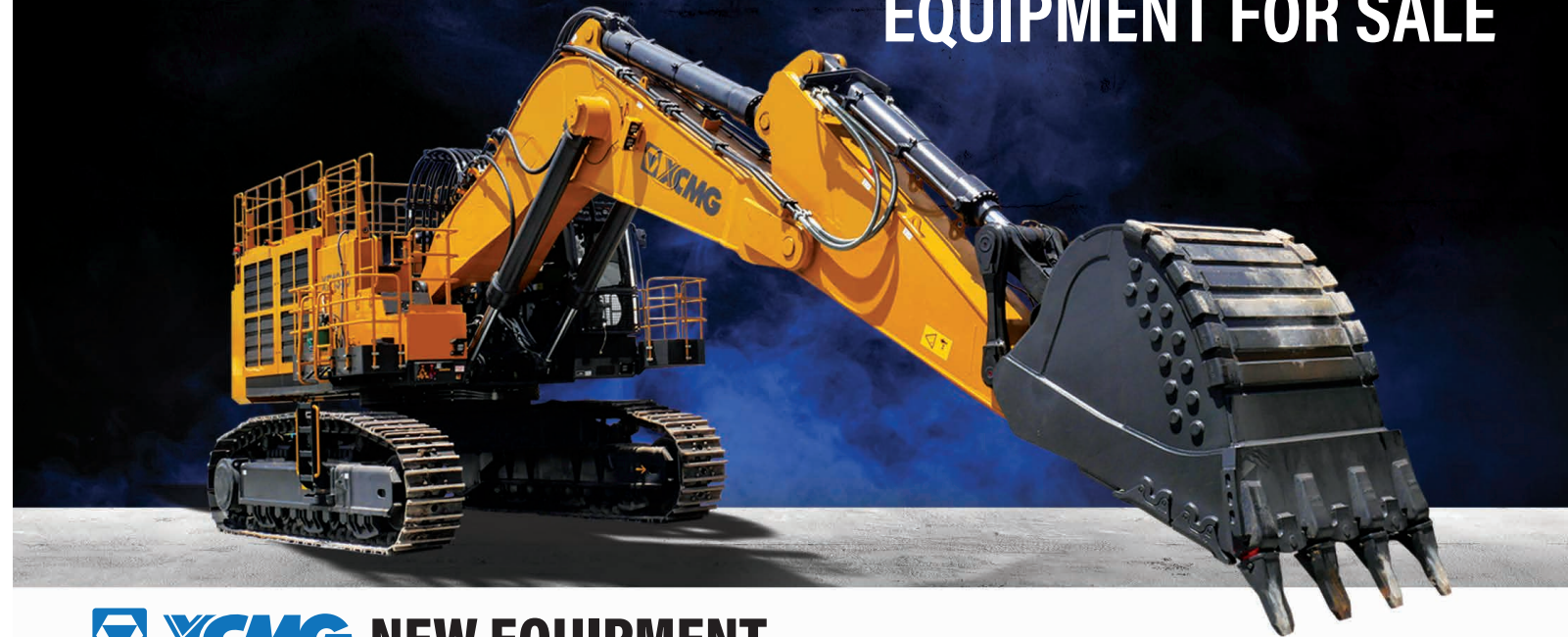
BRAND	SIZE	COMMENTS
Break Tanks	2 - 60 KL	Fitted with stair & gantry system
Water Storage	2 - 56 KL	Can be modified to suit any application



Machine Attachments

CATEGORY	ATTACHMENT	CATEGORY	ATTACHMENT
Excavator	GP Bucket	Tool Handler	GP Bucket
Excavator	Batter Bucket	Tool Handler	Rake Bucket
Excavator	Trenching Bucket	Tool Handler	Stemming Bucket
Excavator	Skeleton Bucket	Tool Handler	Grain Bucket
Excavator	Sieve Bucket	Tool Handler	Forks
Excavator	Screening Bucket	Tool Handler	Jib
Excavator	Trapezoidal Bucket	Tool Handler	Log Forks
Excavator	Tilting Bucket	Tool Handler	Man Cage
Excavator	Rock Breaker	Tool Handler	Tyre Grab
Excavator	Auger	Tool Handler	GPS
Excavator	Misu Heavy Duty Screen		
Excavator	GP Grapple	Backhoe	GP Bucket
Excavator	360° Grapple	Backhoe	Trenching Bucket
Excavator	Rock Grapple	Backhoe	Batter Bucket
Excavator	Hydraulic Grapple	Backhoe	Batter Bucket (Digger)
Excavator	Mechanical Grab	Backhoe	Auger
Excavator	Hydraulic Grab	Backhoe	Forks
Excavator	Sleeper Grab	Backhoe	GPS
Excavator	Plate Compactor		
Excavator	Compaction Wheel	Telehandler	GP Bucket
Excavator	Tree & Stump Mulcher	Telehandler	Batter Bucket
Excavator	Ripper	Telehandler	Forks
Excavator	GPS	Telehandler	Jib
		Telehandler	GP
Skid Steer	GP Bucket		
Skid Steer	Rake Bucket	Grader	Roller
Skid Steer	Forks	Grader	GPS
Skid Steer	Bucket Broom		
Skid Steer	Auger	Tractor	Grid Roller
Skid Steer	Trencher	Tractor	Hydraulic Angle Broom
Skid Steer	Levelling Attachment		
Skid Steer	GPS		

Quality NEW & USED EQUIPMENT FOR SALE



NEW EQUIPMENT

Available in Western Australia, South Australia, Northern Territory, and Queensland

XC938 TOOL HANDLER



FINANCE AT
1.99%
INTEREST PA

Bucket Capacity - 2.1 m³
Engine Model - Cummins QSB6.7
Rated Power - 99 kW @ 2200 rpm

XC948 TOOL HANDLER



FINANCE AT
1.99%
INTEREST PA

Bucket Capacity - 2.1 m³
Engine Model - Cummins QSB6.7
Rated Power - 142 kW @ 2200 rpm

XE155U MIDI EXCAVATOR



FINANCE AT
1.99%
INTEREST PA

Operating Weight - 16.6 tonnes
Engine Model - Cummins QSF3.8
Rated Power - 93 kW @ 2200 rpm

GR2405 12/14' GRADER



FINANCE AT
1.99%
INTEREST PA

Operating Weight - 17.5 tonnes
Blade Dimensions - 3660 x 610 mm
Rated Power - 178 kW / 2200 RPM

XGA16K 16.6m ARTIC BOOM



FINANCE AT
1.99%
INTEREST PA

Maximum Working Height - 16.6 m
Platform Capacity - 256/350 kg (limited)
Platform Dimensions - 1.83 x 0.76 x 1.15 m

XG0807 7.8m SCISSOR LIFT



Maximum Working Height - 7.8 m
Platform Capacity - 230 kg
Platform Dimensions - 1.67 x 0.74 m

XE380LC EXCAVATOR



Operating Weight - 40.5 tonnes
Engine Model - Cummins QSL9
Rated Power - 214kW @ 2100 rpm

XS83 SMOOTH DRUM ROLLER



Operating Weight - 8 tonnes
Drum Width - 1.2m
Rated Power - 24 kW @ 2400 rpm

*1.99% Finance is available on certain 2024 XCMG models. Not available with any other specials, or price reductions. Offer ends 30/06/2025. Subject to T&C's available on the website [brooksequipment.com.au](https://www.brooksequipment.com.au)

USED EQUIPMENT

Volvo EC290CLC



Price - \$100,000 +GST
Hours - 5830

Year - 2010
Location - QLD

Komatsu PC850-8EO



Price - \$345,000 +GST
Hours - 11281

Year - 2011
Location - WA

Komatsu WA320PZ-6



Price - \$125,000 +GST
Hours - 8183

Year - 2009
Location - NT

Komatsu HM400-3MO



Price - POA
Hours - 7876

Year - 2019
Location - WA

BROOKS

EQUIPMENT



1300 BROOKS (276 657)
sales@brooksequipment.com.au
www.brooksequipment.com.au

OIL, GAS, & MINING INDUSTRY Flights



- CORPORATE CHARTER FLIGHTS
- FIFO FLIGHTS
- URGENT AIR FREIGHT
- REMOTE AIRSTRIP ACCESS
- PASSENGER & CARGO CONFIGURATIONS



☎ 1300 AIRWAY (247 929)
@ ops@brooksairways.com
🌐 brooksairways.com

BROOKS
AIRWAYS