

BROOKS
EQUIPMENT

XCMG

PRECISION & POWER

PRECISION CONTROL

SUPERIOR OFF-ROADING

WATER-WADING ABILITY

MADE FOR AUSTRALIAN CONDITIONS



ARTICULATED BOOM LIFT **XGA16K**

Product Specifications

OPERATING WEIGHT
7,600 kg

RATED POWER
36 kW / 2600 rpm

WORKING HEIGHT
16.63 m

ENGINE
Kubota V2403BM

Built for tough Aussie conditions.



PRODUCT HIGHLIGHTS

- The XCMG XGA16K Boom Lift is engineered for efficient material handling in warehouse and industrial environments.
- With a lifting capacity ranging from 240kg to 1.5 tonnes, it combines strength with precise maneuverability for elevated work.
- Ideal for applications such as maintenance access, personnel lifting, and facility platform tasks, the XGA16K ensures dependable performance.
- Its design supports both indoor and outdoor use, offering versatility across multiple job site conditions.
- The XGA16K is a practical solution for operations requiring safe and efficient vertical access.

MACHINE WALKAROUND

ENGINE

Engine Emission standard
Pre-air-cleaner (cyclone style)
Dust-proof Net on cover panel
Engine oil drain coupler
Expansion tank
Fuel cooler
Fuel pre-filter with water separator
Radiator, oil cooler and intercooler

HYRDAULIC SYSTEM

Drain filter (Return hydraulic filter)
Pilot filter
Suction filter
Main control valve connection assembly
Power unit assembly
Joint fitting of oil filter
Luffing cylinder
Steering cylinder
Hydraulic oil tank
Telescopic cylinder
Oscillating cylinder
Emergency pump
Cylinder balance valve
Curved arm cylinder
Level cylinder
Travel retarder

ELECTRIC SYSTEM

Boarding control assembly
Heat-resistant and antistatic rubber

Power switch
Acoustic device
Relay
Controller
Limit switch
Detector switch
Angle detection device
Double channel pressure sensors
Walking handle
Dual shaft handling handle
Foot switch
Turntable horizontal sensor
Weighing sensor

WORKING DEVICE

Primary work platform
Anti-extrusion device
Toolbox
Tool tray*
Articulated arm
Telescopic arm
Lower slide
Pin
Self-lubricating bearing
Solid tyres*
Work light assembly*

UNDERCARRIAGE

Car-body structure
Cover plate
Wheel hub suite

Solid tie assembly
Steering knuckle
4 ties down points

MONITORING SYSTEM

Warning and alarm system:
Overheating ,
Engine warning,
Engine oil pressure,
Alternator,
Minimum fuel level
Remote information processing system to view location, usage, and fault records*
Display:

- Water temperature
- Hour
- Fuel level
- Clock
- Work mode
- Working parameter

OTHER

Working alarm
Platform power*
Compressed air hose*
Maintenance and Operating Manuals
Operator protection alarm*
Generator options for 240V power to platform*

*Optional inclusion

HEAVY-DUTY LOAD CAPACITY

256kg/350kg dual load zones with industry-leading capacity for demanding worksites.

PRECISION POSITIONING

Multi-directional movement—up, down, and across—with precise reach and extension.

ADVANCED ELECTRICAL CONTROL

Distributed PLC system and adaptive proportional valve control ensure top environmental adaptability.

RELIABLE HYDRAULIC DRIVE

Full hydraulic system with 355° non-continuous turntable rotation for simple, reliable operation.

SUPERIOR OFF-ROAD CAPABILITY

Four-wheel drive with 45% gradeability and axle balancing for strong ground adaptability.

SMOOTH SPEED CONTROL

Infinitely variable speed for enhanced control and operator comfort.

WATER-WADING UNDERCARRIAGE

Non-powered undercarriage design improves water-wading performance.



DURABLE IRON HOARDINGS

High-reliability structure using robust iron hoardings.

EMERGENCY POWER SYSTEM

Independent backup power for safe and easy emergency stowage.

COMPACT AND TRANSPORTABLE

Compact overall design allows easy manoeuvrability and container transport.

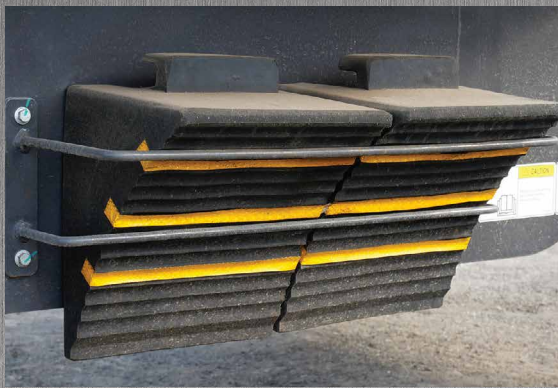
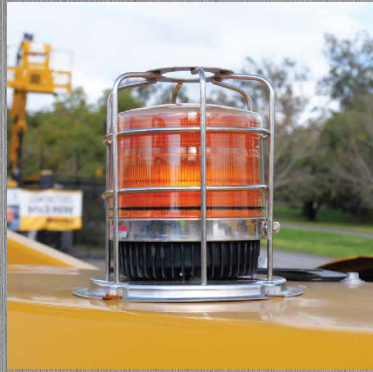


**DESIGNED TO
PERFORM**

**BUILT TO
LAST**

"A really friendly group of people with a huge range of equipment."

Alan Hall - Brooks Equipment Customer



XGA16K

Articulated Boom Lift

DIMENSIONS & SPECIFICATIONS



Scan to view the XGA16K product brochure

MAIN SPECIFICATIONS

POWER SOURCE

Engine Type	Kubota V2403BM-DI-CTO4e (Stage III)
Engine Power Rating	36 kW / 2600 rpm
Batteries	12 V DC

WEIGHT

Total Machine Weight	7,600 kg
----------------------	----------

TYRES

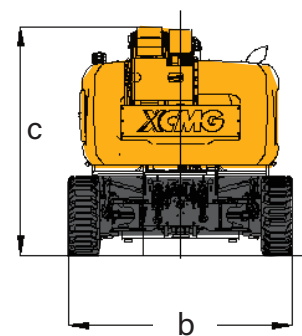
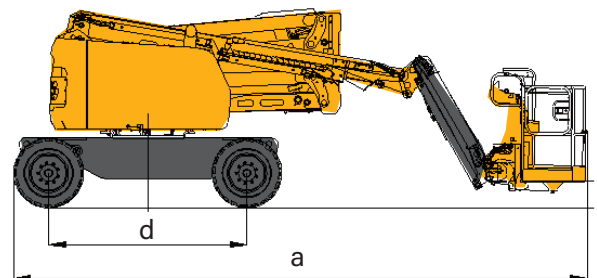
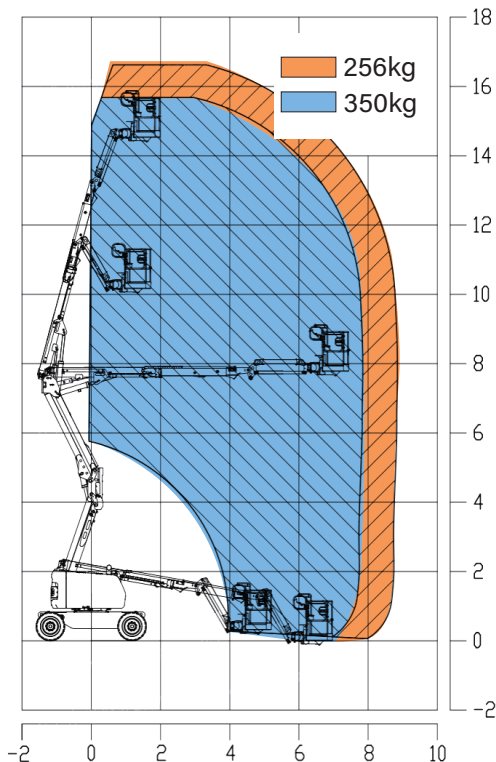
Standard Tyres	33x12-20/7.5 solid tyres
Optional Tyres	315/55D20-18 filled solid tyres

DIMENSIONS

Overall Length (Stowed)	6.85 m
a Transport Length (Short Arm Folded Down)	5.6 m
Overall Width	2.32 m
b Overall Height	2.38 m
c Platform Size	1.83 x 0.76 x 1.15 m
d Wheelbase	2.38 m
Min. Ground Clearance	300 mm

WORKING SCOPE

Max. Working Height	16.63 m
Max. Platform Height	14.63 m
Load Capacity of Extended Platform	256 / 350 kg (Limited)
1st Boom Luffing Range	0° to +65°
2nd Boom Luffing Range	-11° to +75°
Fly Jib Luffing Range	-65° to +70°
Turntable Rotation Angle	355° (Discontinuous)
Platform Rotation Angle	160°
Max. Tail Swing (Stowed)	0 mm
Max. Travel Speed	
Contracted	5.5 km/h
Extended	0.6 km/h
Min. Turning Radius	
Inside	3.2 m
Outside	4.7 m
Max. Gradeability	30% / 45% (17° / 24°)



SERVICE LIKE NO OTHER



With a dedicated Field Service team of qualified HD Mechanics, and access to OEM parts, you're connected to the best after sales support for your machine's full lifetime.

QUALITY



Quality tested machines, developed and built for Australian conditions.

GUARANTEE



All of our XCMG models come with first class warranty cover.

ANY TIME



Our team of experts are available 24 hours a day, 7 days a week.



PARTS ON YOUR DOORSTEP

Access to parts and support is made easy through XCMG's Australian Technical and Service Centre.

SUPPORT FROM BRANCHES AUSTRALIA WIDE



With Brooks Equipment branches Australia-wide, you have complete coverage for support and servicing, wherever you are in the country.

BROOKS

EQUIPMENT

Discover more about your XCMG machine



1300 BROOKS (276 657)

@ sales@brooksequipment.com.au

www.brooksequipment.com.au