

# BLENDING STRENGTH & AGILITY



MADE FOR AUSTRALIAN CONDITIONS



## ARTICULATED BOOM LIFT

# XGA12K

Product Specifications

OPERATING WEIGHT	5,600 kg
RATED POWER	18.5 kW / 3000 rpm
WORKING HEIGHT	12.55 m
ENGINE	Kubota D1105

## Built for tough Aussie conditions.



### PRODUCT HIGHLIGHTS

- The XCMG XGA12K blends strength and agility for reliable elevation tasks.
- Built for powerful performance in demanding worksites. With a robust 230kg lift capacity and reliable diesel power, this boom lift ensures efficiency, precision, and durability.
- Offering a maximum working height of 12.55m, the XGA12K provides safe and stable access for maintenance, construction, and industrial applications.
- Enhanced operator control and safety is achieved through proportional joystick control, full-time positive traction drive, and a 4-wheel braking system.
- Harsh environment kits, cold start components, and an active defense protection system ensure reliable performance.

### MACHINE WALKAROUND

#### STANDARD CONFIGURATION

1.4m x 0.7m working platform  
Lift capacity up to 230kg  
160° platform rotation  
12V DC auxiliary power  
Cold start components  
Engine air pre-filter kit  
Engine condition monitoring and start protection device  
4-wheel drive  
Lowering and moving alarm  
Tilt alarm  
Horn  
Emergency stop  
Emergency power unit  
4-wheel braking system  
Proportional self-levelling system  
Proportional joystick control

Drive enable  
Hour meter  
Lockable engine house  
355° non-continuous turntable rotation  
Full time positive traction drive  
Full speed travelling motor  
Telematics pre-interface  
Active defense protection system  
Harsh environment kits  
Thumb rocker steering  
AC Power cord to platform  
Foam filled tyre  
Platform with half-height mesh panel

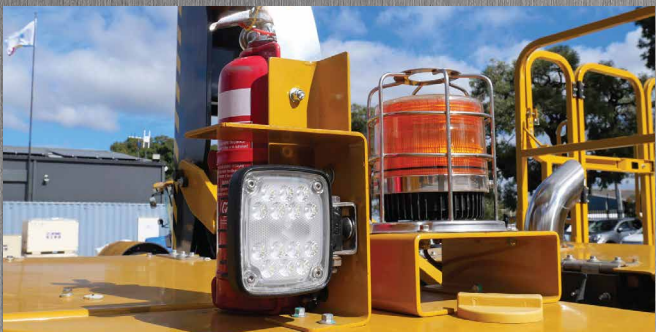
#### OPTIONAL CONFIGURATION

Air pipe to platform  
Tool tray  
Working light assembly

*"A really friendly group of people with a huge range of equipment."*

**Alan Hall - Brooks Equipment Customer**





# XGA12K

## Articulated Boom Lift

### DIMENSIONS & SPECIFICATIONS

**BROOKS**  
EQUIPMENT



Scan to view the XGA12K product brochure

#### MAIN SPECIFICATIONS

##### POWER SOURCE

Control	12V DC Proportional Control
Emergency Power Supply	12V / 180 Ah
Engine Model	Kubota D1105
Engine Power	18.5 kW (3000 rpm)
Max. Engine Torque	71.5 Nm (2200 rpm)
Engine Emission Standard	EU V
Hydraulic Tank Capacity	39 L
Fuel Tank Capacity	40 L

##### DIMENSIONS

###### Overall Stowed Dimensions

Length	5950 mm
Width	1860 mm
Height	2070 mm

###### Overall Transportation Dimensions

Length	5950 mm
Width	1860 mm
Height	2070 mm

###### Platform Dimensions

Length	1400 mm
Width	700 mm
Height	1150 mm

Wheelbase 2060 mm

Fly Jib Length 1420 mm

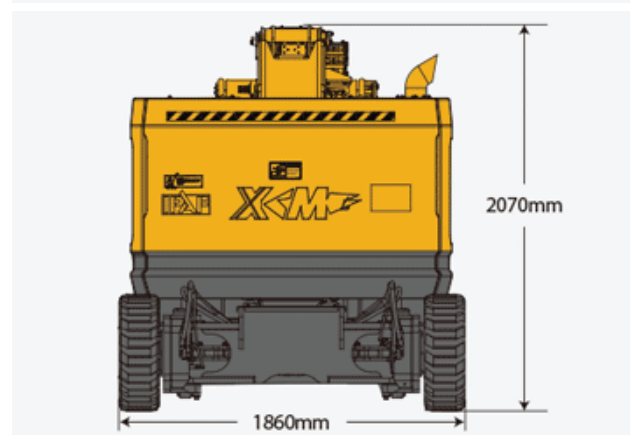
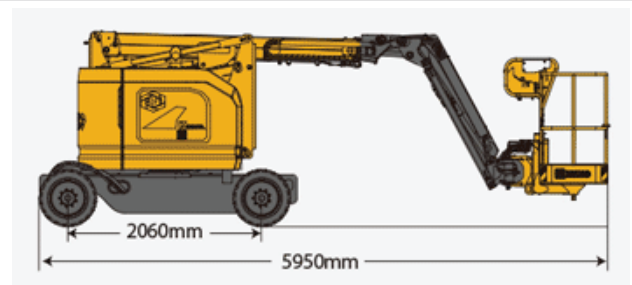
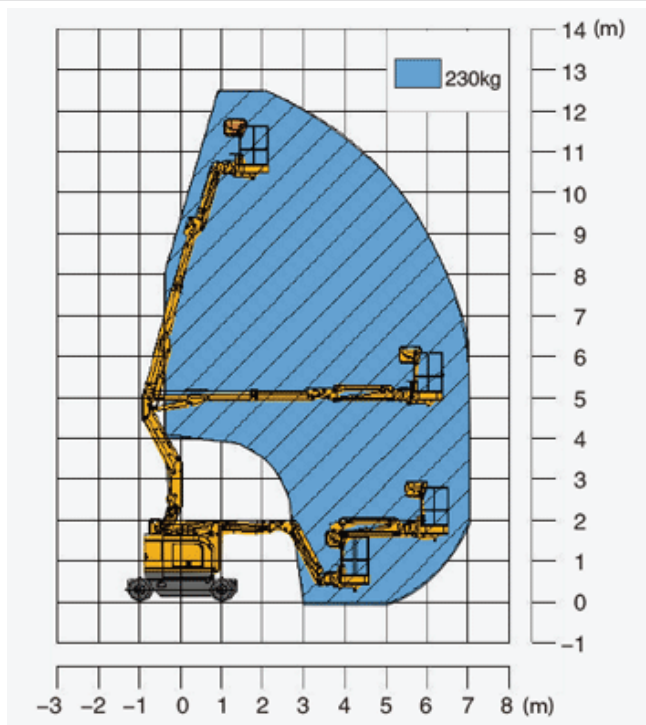
Min. Ground Clearance 200 mm

##### TYRE

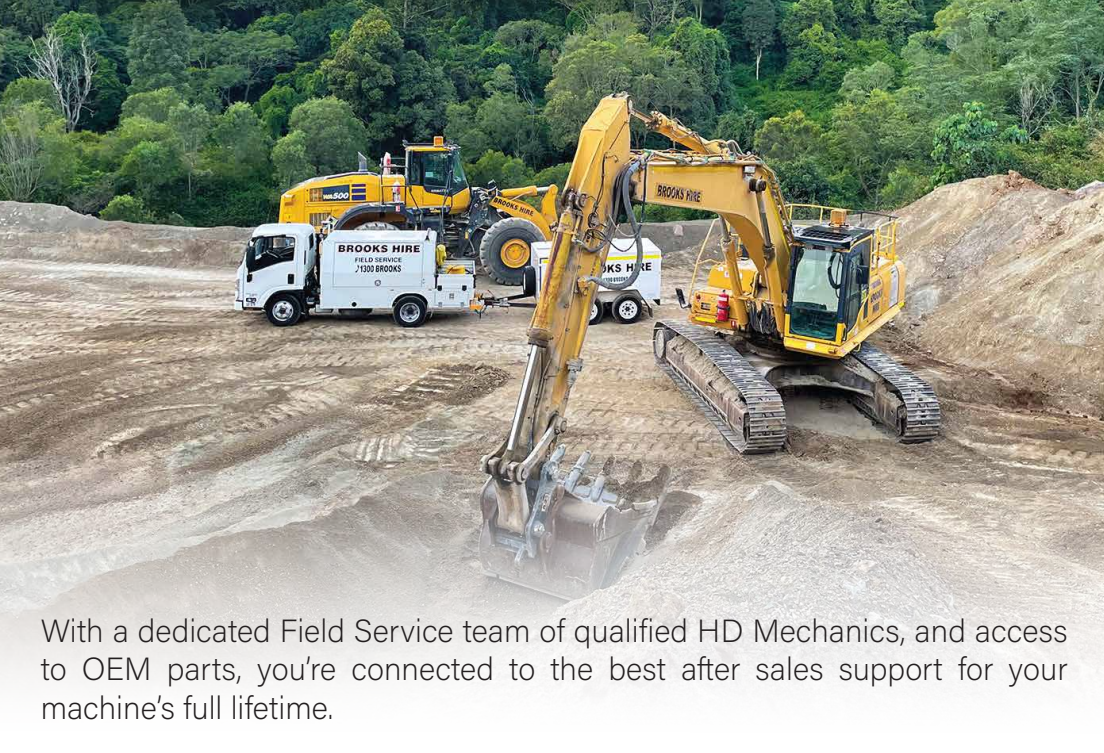
Tyre Size	687 mm x 245 mm
Tyre Ground Pressure	5.51 kg/cm <sup>2</sup>
Driving Wheels	4
Braking Wheels	4
Steering Wheels	2

##### WORKING SCOPE

Max. Working Height	12.55 m
Max. Platform Height	10.55 m
Max. Working Range	7.1 m
Max. Up and Over Clearance	4.9 m
Max. Lift Capacity (Unlimited)	230kg
Max. Number of Occupants	2
Max. Working Slope	X-5° / Y-5°
1st Boom Luffing Range	-6° ~ 69°
2nd Boom Luffing Range	-1.5° ~ 75°
Fly Jib Luffing Range	-65° ~ 70°
Turntable Rotation	355°
Platform Rotation	160°
Total Weight	5600 kg
Driving Speed (Stowed)	5 km/h
Driving Speed (Raised or Extended)	1.1 km/h
Min. Turning Radius	
Inside	2320 mm
Outside	3980 mm
Turntable Tail Swing (Stowed)	0mm
Max. Gradeability	35% (19°)



# SERVICE LIKE NO OTHER



With a dedicated Field Service team of qualified HD Mechanics, and access to OEM parts, you're connected to the best after sales support for your machine's full lifetime.

## QUALITY



Quality tested machines, developed and built for Australian conditions.

## GUARANTEE



All of our XCMG models come with first class warranty cover.

## ANY TIME



Our team of experts are available 24 hours a day, 7 days a week.



# PARTS ON YOUR DOORSTEP

Access to parts and support is made easy through XCMG's Australian Technical and Service Centre.

# SUPPORT FROM BRANCHES AUSTRALIA WIDE



With Brooks Equipment branches Australia-wide, you have complete coverage for support and servicing, wherever you are in the country.

# BROOKS

EQUIPMENT

Discover more about your XCMG machine



1300 BROOKS (276 657)

@ sales@brooksequipment.com.au

www.brooksequipment.com.au