

# VERSATILE PERFORMANCE

INNOVATIVE MATERIAL HANDLING SOLUTIONS



**MADE FOR AUSTRALIAN CONDITIONS**



## RIGID DUMP TRUCK **XDE240**

Product Specifications

OPERATING WEIGHT	<b>230,000 kg</b>
RATED POWER	<b>1865 kW / 1800 rpm</b>
BODY CAPACITY	<b>STRUCK 118m<sup>3</sup> HEAPED 148m<sup>3</sup></b>
ENGINE	<b>16V4000</b>

## Built for tough mining conditions.



## INDUSTRY LEADING SAFETY STANDARDS

- ◆ Three-point seat belt
- ◆ Escape hammer
- ◆ Emergency stop switch
- ◆ Concentrated fire extinguishing system starter (optional)
- ◆ Auxiliary steering and braking accumulators
- ◆ Non-slip walking surface
- ◆ Rail guards

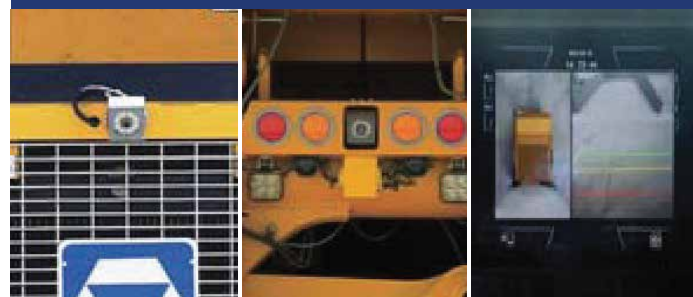
## SERVICEABILITY

- **AUTOMATIC LUBRICATION SYSTEM**  
A controlled level of lubricant is delivered timely to the lube points, reducing service time and costs.
- **QUICK REFUELLING SYSTEM**  
Quick refuelling ports are distributed on both sides of the frame, accessible from the ground and easy to operate.

## DESIGNED FOR THE OPERATOR

The XDE240 double axle rigid dump truck excels at material handling across mining, construction, and industrial settings. Engineered to deliver strength and efficiency in heavy-duty operations, this rigid dump truck comes with versatile capacities.

- **EXCELLENT VISIBILITY**  
The ROPS and FOPS cab meets ISO standards, is spacious, and offers an expansive view.
- **COMFORTABLE SEAT**  
The operator and co-pilot seats are adjustable, using gas-suspension damping adjusters.
- **FULLY EQUIPPED CAB**
  - ◆ Instrument display
  - ◆ Alarm
  - ◆ Lighting
  - ◆ Control switch
  - ◆ On-board computer
  - ◆ Electric windows
  - ◆ Tilting and telescoping steering wheel
  - ◆ Electric windshield wiper
  - ◆ A/C and heating
- **VEHICLE MONITORING SYSTEM**  
Vehicle running data and fault alarm, are manageable from the LCD and instrument display. The large colour monitor allows easy navigation between different screens.
- **EXPLOSION-PROOF**  
The cab is built with a composite structure, with the bottom plate consisting of a thickened steel plate and rubber sponge to isolate and reduce noise, and prevent tyre explosion.
- **FULL VIEW DRIVE SYSTEM**  
Real-time footage of the truck's surrounds, ensures ultimate vision and safe operation.



# EXCELLENCE UNDER PRESSURE

## OPTIMISED PRODUCTIVITY

### ■ HIGH PERFORMANCE ENGINE

Exceptional fuel economy and power are provided by the fully electronic control diesel engine. The advanced modular common rail fuel system delivers high combustion efficiency and low emissions. Double control modules ensure the best performance in wide range of altitudes and load conditions.

### ■ ADVANCED DRIVE SYSTEM

The independent integrated AC Frequency Conversion Traction System, provides real-time power tracking and control strategies. The engine power usage is optimised through running auxiliary components (fans, pumps, motors) only when needed.

Fuel is effectively conserved when the engine is idling, allowing more power to be available when accelerating and climbing grades.

### ■ DRIVE CONTROL

XCMG integrates the following drive control technologies to reduce tyre wear and extend tyre service life:

- ◆ Adhesion control
- ◆ Anti-slip drive
- ◆ Drive power steering adaptation
- ◆ Anti-slip slope control
- ◆ Electronic differential



## HIGHLY RELIABLE BRAKES

The XDE240 provides superior braking ability, with a braking distance of 85 percent.

### ■ WORKING BRAKE

The rotor receives a reverse torque to drive the motor in its power-generating state, and can brake electrically during backing up.

### ■ LOW-SPEED DRIVING BRAKE

Fully hydraulic caliper disc brake system, controlled by a pedal.

### ■ LOADING BRAKE

Braking mode applicable to material loading and unloading; the rear wheels brake while the front wheels are released.

### ■ PARKING BRAKE

Spring loading, hydraulic release.

### ■ EMERGENCY BRAKE

Simultaneous function of the hydraulic brake and the electric brake.

*"A really friendly group of people with a huge range of equipment."*

**Alan Hall - Brooks Equipment Customer**



# SMOOTH OPERATION

## IN ROUGH CONDITIONS

### ■ FRAME

Designed with a box girder and ring beam structure, cast steel components are utilised in stress-concentrated areas to ensure stability in adverse working conditions, with load frequency changes.

CAE software is used to analyse and optimise the frame strength and stiffness.

### ■ BODY

The cargo compartment is constructed using a high-strength alloy steel plate welding. The compartment is constructed from a dustpan design, providing higher discharge efficiency.

The 'C&I' shaped rib structure, effectively reduces the weight of the compartment, and the rear ladder structure reduces wear and tear to the rear compartment.

### ■ SUSPENSION

Independent candle-type front suspension, symmetrical on both sides, ensure steady and comfortable operation. This configuration allows adaption to road and load conditions, absorbing impact, attenuating vibration, and ensuring smooth driving.

The rear suspension utilises a triangular longitudinal arm suspension, allowing rear axle swing to effectively absorb bending and torsion stress generated by large loads.



### ■ STEERING

High precision and stable steering is achieved through the flow-amplified hydraulic steering system. The steering oil is supplied by a variable plunger pump, allowing the steering wheel to offer better road sensing.

The emergency steering is powered by an accumulator.

### ■ HOISTING

A three-level di-functional lifting cylinder is utilised to shorten the machine's lifting and lowering time.

### ■ TYRES

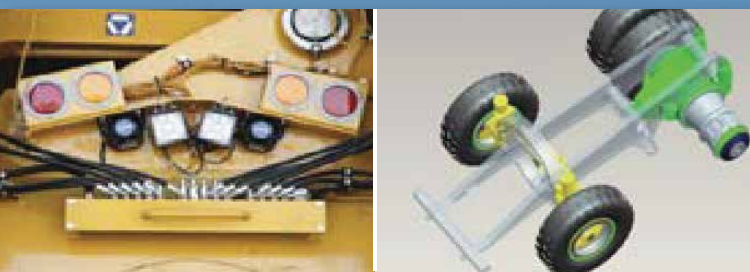
Passing capacity is improved by flat tyres, which ensure adequate traction force is achieved.

### ■ ILLUMINATING SYSTEM

The lighting system includes:

- ◆ Headlamps
- ◆ Steering lamps
- ◆ Clearance lamps
- ◆ Parking lights
- ◆ Reversing lights
- ◆ Maintenance lights

Control and working voltage is 24V (DC)



# XDE240

## Rigid Dump Truck

### DIMENSIONS & SPECIFICATIONS



Scan to view the XDE240 product brochure

#### MAIN SPECIFICATIONS

##### PERFORMANCE PARAMETERS

Rated Payload		230000 kg
Empty Weight		172000 kg
Gross Vehicle Weight		395000 kg
Drive Style		4 x 2
Max. Speed		64 km/h
Max. Gradeability		17%
Min. Turning Diameter		28.4 m
Weight Distribution (Empty)	Front	50%
	Rear	50%
Weight Distribution (Loaded)	Front	33%
	Rear	67%
Service Capacities	Fuel	4500 L
	Cooling System	960 L
	Hydraulic System	900 L
	Engine Oil	280 L
Body Capacity	Struck	118 m <sup>3</sup>
	Heaped 2:1	148 m <sup>3</sup>
Overall Dimensions (Empty)	Length	14784 mm
	Width	9106 mm
	Height	7439 mm

##### ENGINE

Model	16V4000
Rated Power/Speed	1865 kW @ 1800 rpm
Max. Torque/Speed	11868 Nm / 1500 rpm
Optional	QSK60

##### ELECTRIC DRIVE

Drive System	XCMG 240AC Drive System
	GE 240AC Drive System
Alternator	XCMG-A2000
	GTA41
Traction Motor	XCMG-M780
	GEB25
Ratio	31.875:1
	31.875:1
Optional	XCMG AC Drive System

##### TYRES & RIMS

Standard Tyre	40/80R57 Tubeless, all-steel radial tyres
Standard Rim	32.00/6.0

##### CAB

Type	ROPS & FOPS
------	-------------

##### BRAKE SYSTEM

Service Brakes	All hydraulically actuated dry disc brakes at each wheel
Electric Dynamic Retarder	Max. 2983 kW

##### FRONT SUSPENSION

Type	Independent, hydro-pneumatic suspension
------	---

##### HYDRAULIC SYSTEM

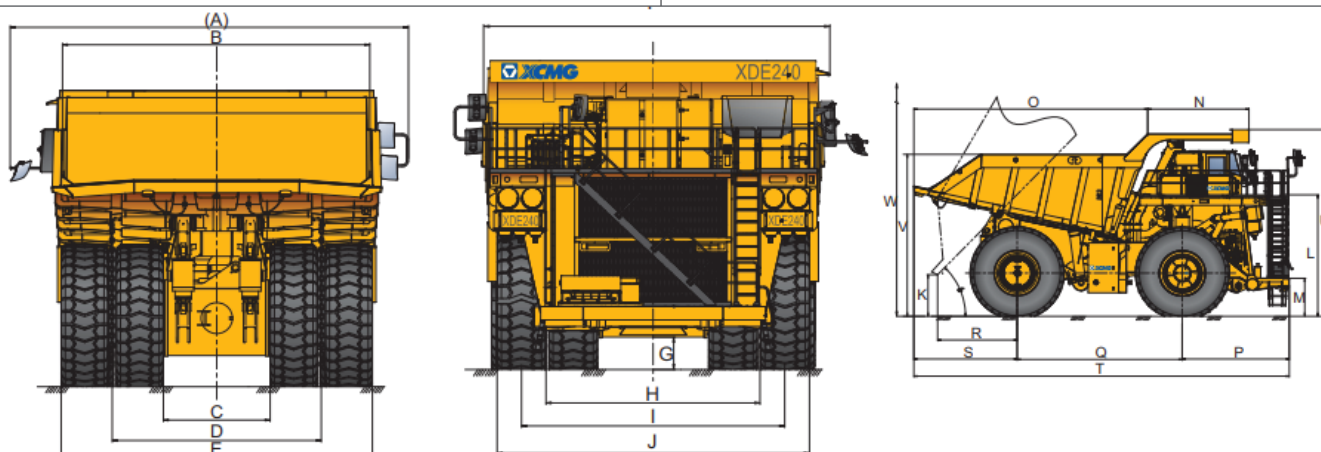
Steering	Flow amplified power steering. Supplementary steering automatically supplied by accumulators
Lifting Time	28 s

##### ELECTRICAL SYSTEM

Type	24 V
------	------

##### DIMENSIONS & WORKING SCOPE

A	9110 mm
B	8130 mm
C	2610 mm
D	5290 mm
E	7970 mm
F	8780 mm
G	641 mm
H	4850 mm
I	6020 mm
J	7190 mm
K	1840 mm
L	4310 mm
M	1470 mm
N	4975 mm
O	9310 mm
P	4250 mm
Q	6350 mm
R	3360 mm
S	4360 mm
T	14780 mm
U	7440 mm
V	4850 mm
W	14530 mm



# SERVICE LIKE NO OTHER



With a dedicated Field Service team of qualified HD Mechanics, and access to OEM parts, you're connected to the best after sales support for your machine's full lifetime.

## QUALITY



Quality tested machines, developed and built for Australian conditions.

## GUARANTEE



All of our XCMG models come with first class warranty cover.

## ANY TIME



Our team of experts are available 24 hours a day, 7 days a week.



# PARTS ON YOUR DOORSTEP

Access to parts and support is made easy through XCMG's Australian Technical and Service Centre.

# SUPPORT FROM BRANCHES AUSTRALIA WIDE



With Brooks Equipment branches Australia-wide, you have complete coverage for support and servicing, wherever you are in the country.

# BROOKS

EQUIPMENT

Discover more about your XCMG machine



1300 BROOKS (276 657)

@ sales@brooksequipment.com.au

www.brooksequipment.com.au