

OPTIMISING PERFORMANCE

OPERATOR EFFICIENCY | SERVICEABILITY | DURABILITY



MADE FOR AUSTRALIAN CONDITIONS



WHEEL LOADER **XC978**

Product Specifications

OPERATING WEIGHT

24,500 kg

RATED POWER

216 kW / 2100 rpm

BUCKET CAPACITY

4.5m³

BATTERY

Cummins QSM11

Built for tough Aussie conditions.



PRODUCT HIGHLIGHTS

■ PERFORMANCE POWER

Equipped with a Tier III emission Cummins QSM11 engine, optimised three-section drive shaft, and XCMG wet axle; the entire machine offers significant advantages in reliability, efficiency, comfort and control.

■ OPERATING ENVIRONMENT

The fully sound-proofed and spacious cab, and fixed-variable, dual-pump confluence hydraulic system, ensures comfortable and easy operation, light steering, and low energy consumption.

■ SERVICEABILITY

The tiltable cab, backward-tiltable hood, and full-variable, electro-hydraulic proportional control, facilitates broad vision, comfortable operation, and convenient maintenance.

MACHINE WALKAROUND

ENGINE

Cummins 216kW/2100rpm
Engine emergency stops: 1 inside cabin
1 outside cabin
Engine Connection Diagnostics (ECD)

TRANSMISSION

Electronic controlled transmission (soft shift, auto shift, pedal shift):
4 speeds FWD
4 speeds REV
Transmission oil cooler
Torque converter
Flameout delayer
Transmission under guard
Hydraulic differential front axle

CABIN

Coat hook
Escape hammer
Air-suspension seat
Tinted safety glass
Rear view camera
Rear view mirrors
Wiper and washer
A/C and heating
Tiltable and telescopic steering wheel

WORKING DEVICE

Bucket: 4.5m³ blade
Tyres: 26.5R25 L3

HYDRAULIC SYSTEM

Brake: Service brake (enclosed wet-disc)
Park brake
Dual brake pedal
Third hydraulic system
Bucket lift limit
Automatic bucket levelling
Automatic lubrication system
Diagnostic pressure fittings
Hydraulic oil cooler
Hydraulic oil level gauge
Stabiliser module

LIGHTS

2 headlights
1 LED dome light
Rear combination lights (2 each of reverse, turn signal, position, brake)
Roof working lights LED (2 front, 2 rear)
2 rear hood working lights

ELECTRIC SYSTEM

12V to 12VDC converter
Radio with USB port

SAFETY FEATURES

ROPS/ FOPS cab
Fire extinguisher
Emergency steering
Boom safety bar
Ergonomic and slip resistant platform
Handrails/ ladders/ platforms/ steps
Wrist supports on armrests
Manuals: Operation & Maintenance
Spare Parts

OTHER

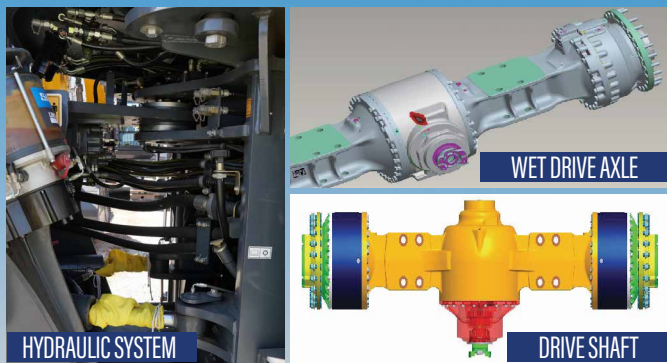
Counterweight
Traction bar with pin
Intake preheating
Fuel tank cap lock
Electric horn
Tool kit



EXCELLENCE IN CONSTRUCTION

PRODUCTIVITY & PERFORMANCE

- **PILOT LOCK**
No movement of the joystick after closure, for safe servicing.
- **HYDRAULIC SYSTEM CONTROL**
The fixed-variable dual-pump confluence hydraulic system enables light steering, ensuring smooth and safe operation.
- **TIER III SYSTEM**
Cummins QSM11 engine with EFI and turbocharged power; the rated power is 216kW, meeting the demand of heavy-duty use.



HIGH RELIABILITY & DURABILITY

- **REINFORCED WET DRIVE AXLE**
The ZF series wet axles, have increased anti-blocking breathers at both ends, to improve the reliability and adaptability of the working conditions. Equipped with oil cooling and a heat dissipation system, the wet brake friction pads can be forcibly cooled to effectively extend the service life of the axle.
- **OPTIMISED THREE-SECTION DRIVE SHAFT**
Distributing the force of the drive shaft when steering; the key block structure at the connection of the drive shaft, has an anti-loosening effect, making the torque transmission more stable and reliable.
- **HIGH QUALITY HYDRAULIC HOSE**
The inner layer of the hydraulic hose is made of oil-resistant synthetic rubber, and the outer layer is made of abrasion-resistant and anti-aging synthetic rubber; thus, allowing the hose to withstand harsh conditions and pressure.



DESIGNED FOR THE OPERATOR



LEADING STANDARDS

■ FNR PILOT JOYSTICK

Pilot handle with FNR button, for easy and efficient one-handed operation.

■ ADJUSTABLE AIR SUSPENSION SEAT & ARMREST

High performance air suspension, shock absorbing seats; adjustable for height and front-to-back positioning. The adjustable armrest box and seat meet the needs of different operators.

■ STABILISER MODULE

Effectively absorbing the impact of the working device cylinders during operation; improving the overall stability of the machine.

■ AUTOMATIC LUBRICATION SYSTEM

Centralised lubrication system, allowing adjustable lubrication intervals; a combination of automatic and manual lubrication methods enhance the reliability of the lubrication system.

■ TEMPERATURE CONTROL

Dual-purpose A/C system with cooling and heating, featuring all-round air outlets for operator comfort. Equipped with an electric water valve for easy operation.

■ SOUND PROOFED & SPACIOUS CAB

ROPS/FOPS cab, featuring a spacious interior and wide field of view. The frame is constructed using rectangular profiled tubes and floor-integrated welding techniques. The micro-pressurisation technology, effectively isolates external dust.

■ COMBINED DASHBOARD

Combination dashboard, connected to the controllers of the engine, transmission, and other working devices, through CAN bus; providing a real-time display of the machine's operating status, with a fault alarm function.

■ WEIGHING SYSTEM (Optional)

Multiple accounts and products can be set to facilitate the adaption of working conditions.

■ STEERING LIMIT

Hydraulic soft-limit function, reduces the rigid impact when steering for a smooth and comfortable experience.

■ EMERGENCY STOP

Emergency stop button on the inside and outside of cab.

■ ROPS & FOPS

Sturdy and durable cab, capable of withstanding severe impact; ensuring safety during operation.

■ RADAR (OPTIONAL)

Optional radar inclusion.



SERVICEABILITY

■ ENGINE CONNECTION DIAGNOSTICS

Engine diagnostic interface, able to diagnose engine faults.

■ FULLY OPENABLE HOOD

The large-angle, rear tilting hood, allows easy access to the engine, radiator, transmission filter, and other components, for convenient maintenance.

■ WIDE CORE & FIN RADIATOR

The radiator is designed with a finned structure and an enlarged radiator core; providing a large heat-dissipation surface area. Each core is constructed in a modular design, allowing easy replacement when required.



INTELLIGENT & MANAGEABLE

Designed with advanced technologies to ease operator work load and increase efficiency, the XC978 engages the following systems within the cab:

OPERATING SYSTEMS

GAUGES

- Engine coolant temperature
- Fuel level
- Speedometer
- Engine tachometer
- Engine oil pressure gauge
- Battery voltmeter



LCD MONITOR

- Engine rpm
- Fault and maintenance warning
- Hour meter
- Electric horn

SWITCHES

- Engine hood open
- Parking
- Battery master switch
- FNR gear
- Engine oil pressure
- Emergency steering
- Main light
- Rear wiper
- Stabiliser module
- Camera

ALARMS, AUDIO & VISUAL

- Battery voltage
- Brake oil pressure
- Fuel level
- Engine coolant temperature
- Emergency warning lamp
- Transmission error codes
- Transmission oil temperature
- Air filter clogging (optional)



XC978

Wheel Loader

DIMENSIONS & SPECIFICATIONS

BROOKS
EQUIPMENT



Scan to view the XC978 product brochure

MAIN SPECIFICATIONS

MODEL

Operating Weight		24500 kg
Rated Load		7800 kg
Bucket Capacity		4.5 m ³
Bucket Breakout Force		215 kN
Tipping Load Full-Steering:	Straight	≥18220 kg
	Full	≥15600 kg

ENGINE

Type	Cummins QSM11-290/X12
	Inline 6 cylinder, air-to-air intercooled, electronically controlled common rail
Rated Power	216 kW @ 2100 rpm
Max. Power	239 kW @ 1800 rpm
Peak Torque	1478 Nm @ 1400 rpm
Displacement	10.8 L

AXLES

Drive System	Four-wheel drive
Front Axle	Fixed
Rear Axle	Oscillation ±12°
Hub Speed Reducer	Planetary reduction at wheel end
Differential	Front axle limited slip differential
Reduction Ratio	23.334

REFILL CAPACITIES

Fuel Tank	400 L
Cooling System	62 L
Engine Oil	34 L
Transmission	50 L
Front Axle	48 L
Rear Axle	48 L
Hydraulic Reservoir	160 L
Hydraulic System (Including tank)	255 L

HYDRAULIC SYSTEM

Type	Fixed variable hydraulic system
Pump	Gear pump + variable displacement piston pump
Rated Oil Quantity	160 L
Control Valve	3 Multi-way valve
System Pressure	240bar
Lift Circuit	Yes
Tilt Circuit	Yes
Hydraulic Oil:	Lift 2-180 x 840 mm
	Tilt 1-200 x 543 mm
Cycle Time:	Dump at Max. Raise 1.2 s
	Total 10.7 s

STEERING SYSTEM

Type	Flow-amplified, load sensitive
Pump	Variable displacement pump
Rated Oil Quantity	(110 + 110) L/min
System Pressure	210 bar
Cylinder	Double acting
Steering Angle	40° both right and left angle
Features	Centre-point frame articulation Tilt and telescopic steering column

NOISE

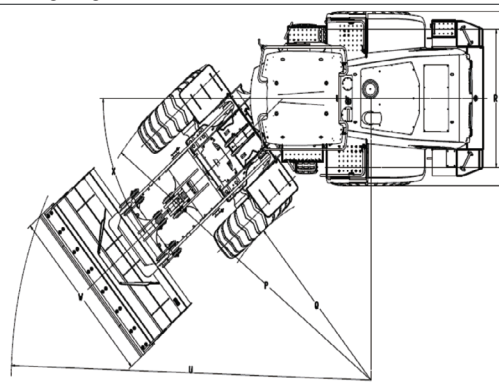
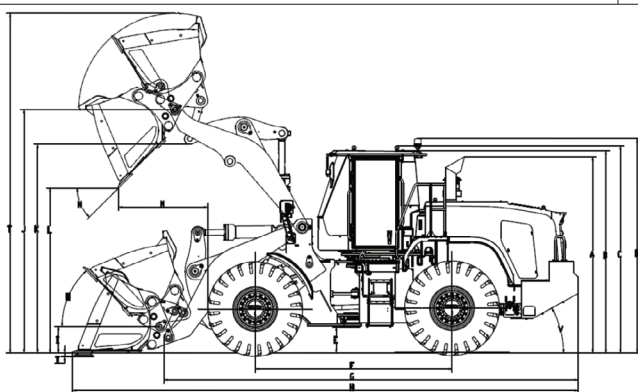
Exterior sound power level at cooling fan max. speed	110 dB
Operator sound pressure level	74 dB
Exterior sound power level	110 dB

TRANSMISSION

4 Speed Transmission	4WG260
	Fully automatic electric control box
Travel Speed FWD	7.2/13.3/28/42
Travel Speed REV	7.2/13.3/28
Brake Distance	≤11m

DIMENSIONS & WORKING SCOPE

A	Height: Top of Exhaust Pipe	3530 mm
B	Top of Cab	3620 mm
C	Cab Roof Lug	3684 mm
D	Top of Warning Light	3810 mm
E	Ground Clearance	488 mm
F	Wheel Base	3550 mm
G	Overall Length (Without Bucket)	7550 mm
H	Transportation Length (Bucket Flat on Ground)	9015 mm
I	Pivot Height : Transport Position	500 mm
J	Max. Lifting	4395 mm
K	Lift Arm Clearance (Max. Lifting)	4082 mm
L	Dumping Height (Max. Lifting and 45° Dumping)	3510 mm
M	Dumping Reach (Max. Lifting and 45° Dumping)	1085 mm
N	Dumping Angle (Max. Lifting and Dumping on Stopper)	45°
O	Rollback Angle: Ground	43°
	Carry	48°
P	Tyre Radius: Outside	6374.5 mm
Q	Inside	3379.5 mm
	Centre of Outside Tyre	6037 mm
R	Wheel Track	2320 mm
S	Overall Width	2995 mm
T	Digging Depth	90 mm
U	Turning Radius (Outside of Bucket)	7220 mm
V	Gradeability	27°
W	Bucket Width	3230 mm
X	Steering Angle	40°



SERVICE LIKE NO OTHER



With a dedicated Field Service team of qualified HD Mechanics, and access to OEM parts, you're connected to the best after sales support for your machine's full lifetime.

QUALITY



Quality tested machines, developed and built for Australian conditions.

GUARANTEE



All of our XCMG models come with first class warranty cover.

ANY TIME



Our team of experts are available 24 hours a day, 7 days a week.



PARTS ON YOUR DOORSTEP

Access to parts and support is made easy through XCMG's Australian Technical and Service Centre.

SUPPORT FROM BRANCHES AUSTRALIA WIDE



With Brooks Equipment branches Australia-wide, you have complete coverage for support and servicing, wherever you are in the country.

BROOKS

EQUIPMENT

Discover more about your XCMG machine



1300 BROOKS (276 657)

@ sales@brooksequipment.com.au

www.brooksequipment.com.au