

OPTIMISING PERFORMANCE

OPERATOR EFFICIENCY | FUEL ECONOMY | MAINTENANCE



MADE FOR AUSTRALIAN CONDITIONS



WHEEL LOADER
XC938AS

Product Specifications

OPERATING WEIGHT
14,000 kg

RATED POWER
119 kW / 2200 rpm

BUCKET CAPACITY
2.1m³

ENGINE
Cummins QSB5.9

Built for tough Aussie conditions.



PRODUCT HIGHLIGHTS

■ PERFORMANCE POWER

Powered by a Tier 3 Cummins QSB5.9 engine (119kW @ 2200rpm) and XCMG MYF160 electronic transmission (4F/3R), the XC938AS delivers reliable performance, smooth shifting, and strong torque. A reversible hydraulic fan and limited slip front axle enhance cooling and traction.

■ OPERATING ENVIRONMENT

The spacious, sound-proofed cab includes an air-suspension seat (SEARS), A/C, joystick with FNR switch, and rear-view camera. Ride control* and automatic levelling ensure smooth handling, while optional upgrades like 360° camera*, auto wiper*, and heated mirrors* enhance comfort.

■ SERVICEABILITY

Designed for fast, simple maintenance with an LCD diagnostic screen, openable hood, SKF auto greasing, and visible oil level indicators. An electric fuel pump and dual isolators improve safety and access.

MACHINE WALKAROUND

ENGINE

Cummins QSB5.9
119KW/2200rpm
Fuel fill pump
Engine emergency stops (1 inside cabin, 1 outside cabin)
Lockable isolator (starter motor) yellow
Hydraulic fan reversible

TRANSMISSION

Gear-selector on steering-column
XCMG MYF160 electronic controlled transmission
4 speeds FWD, 3 speeds REV
Transmission knock out
Torque converter
Limited slip differential front axle

HYDRAULIC SYSTEM

Single joystick control (FNR switch)
Secondary steering
Park brake
Quick hitch and piping, 3rd function hydraulics
Ride control
Automatic boom kick-out
Automatic bucket levelling
Floating function
Full variable hydraulic system
Electric-hydraulic control
Ride control (dual accumulator)
Three thumb handles*

WORKING DEVICE

Bucket capacity 2.1m³ with cutting edge in three sections, bolt-on

Auto greasing system
One click clearing of bucket
Micro motion mode
Parallel lifting
Quick hitch alarm
Lubrication system control in LCD screen
Techking tyre
Tyre pressure alarm*
Dual brake pedals
Auto parking

CAB

ROPS/ FOPS
Escape hammer
Fire extinguisher (Aus standard)*
Air-suspension seat
Rearview camera
Rearview mirrors
Wiper
Air conditioner and heating
Sunshade (front and rear)
Seat monitoring
Electronic door lock*
Electric heated rearview mirror*
Electric adjustable rearview mirror*
Automatic wiper
Cab protective net*
Rear windshield heating*
Electric heated seats*

POWER SYSTEM

Maximum speed limit*
Power cut-off mode selection*
Power mode selection*
Engine idle shutdown*

Turbo timer
Engine speed maintenance*
Button start

ELECTRIC SYSTEM

Lockable isolator (battery) red
12V port
Radio
UHF Radio*
Beacon
Central control LCD screen*
Intelligent weighing system*
Reverse radar*
360° camera*
Door control lights*
Automatic headlights*
Stair lights*
Display screen fault diagnosis system
Intelligent parameter adjustment

SAFETY

Fire extinguisher bracket*
Decals
Manuals: Operation and maintenance, Spare Parts

OTHER

XCMG axle with wet brake
Full fender
20.5R25 radial tyre (Techking)
Pallet fork that suits quick hitch*
Anti-burst valves for crane jib
RESPA*
Fast fill*
Handle steering (Volvo) and steering wheel*

*Optional inclusion

TOP PERFORMANCE

EXCELLENT PRODUCTIVITY & FUEL EFFICIENCY

CUMMINS ENGINE

Reliable and fuel-efficient engine meets Tier III emissions standards, delivering consistent performance.

VARIABLE HYDRAULIC SYSTEM

Offers smooth and responsive operation, flexible steering, and improved energy efficiency.

REINFORCED WET DRIVE AXLE

Heavy-duty axle design with optimised materials for increased strength and durability.

HIGH-QUALITY HYDRAULIC HOSES

Built with oil-resistant and abrasion-resistant synthetic rubber, capable of withstanding high pressure and harsh conditions.

LIMITED SLIP DIFFERENTIAL

Enhances traction and machine stability for improved control across varied terrain.

STABILISER MODULE (STANDARD)

Absorbs impact from work tool cylinders during transport, boosting overall machine stability.



INDEPENDENT COOLING SYSTEM (STANDARD)

Intelligent fan control adjusts speed based on engine and component temperatures, with reverse self-cleaning functionality for maximum cooling efficiency.

COMBINED DASHBOARD WITH CAN BUS

Real-time system monitoring and fault alerts via integrated engine, transmission, and system communication.

OPTIONAL WEIGHING SYSTEM

Supports multiple job settings and product types, adapting to various site requirements.

STEERING LIMIT BLOCKS

Rubber blocks reduce steering impact, providing smoother, more comfortable turning.



DESIGNED FOR THE OPERATOR

TOP SAFETY, COMFORTABILITY & SERVICEABILITY

PILOT LOCK SYSTEM

Disables joystick movement when activated, ensuring safe servicing.

AUTOMATIC LUBRICATION SYSTEM (STANDARD)

Centralised system with adjustable intervals, combining automatic and manual modes for enhanced reliability and reduced maintenance downtime.

FULLY OPENABLE ENGINE HOOD

Large rear-tilt design provides clear access to the engine, radiator, and key components for easier maintenance.

EASY FILTER ACCESS

Easy access with the hood also enables quick and simple access to engine and transmission filters.

WIDE-CORE RADIATOR WITH MODULAR FINNS

Large heat dissipation area and modular core design make cleaning and replacement easy in demanding conditions.

EMERGENCY STOP SWITCHES

Emergency stop buttons located both inside and outside the cab allow quick engine shutdown, enhancing safety.

ROPS/FOPS-CERTIFIED CAB

Durable cab structure meets ROPS and FOPS standards, offering strong protection and operator peace of mind.

ENGINE DIAGNOSTIC INTERFACE (ECD)

Onboard diagnostic port allows quick engine fault detection via computer connection.

FULLY ADJUSTABLE AIR SUSPENSION SEAT

Ergonomically designed with front/rear slide, adjustable firmness, reclining backrest, and adjustable armrest. Supports optimal comfort for operators of all sizes.

FNR PILOT JOYSTICK

Forward/Neutral/Reverse functions built into the joystick enable smooth one-handed control for increased efficiency.

ROPS/FOPS, MICRO-PRESSURISATION CAB

Large cabin with wide visibility, sound insulation, and dust-proofing ensures a clean, quiet, and comfortable workspace.

DUAL-FUNCTION AIR CONDITIONING SYSTEM

Heating and cooling with all-round vents and electric water valve for convenient, year-round climate control.



AT YOUR FINGERTIPS

COMPLETE OPERATOR CONTROL

SWITCHES

- Parking
- Battery master switch
- FNR gear
- Emergency steering
- Main light
- Working light
- Working system*
- Mirror heating*
- Rear wiper
- Ride control
- Rotating beacon*
- Camera

GAUGES

- Engine coolant temperature
- Fuel level
- Engine tachometer
- Engine oil pressure gauge
- Battery voltmeter
- Transmission oil temperature

ALARMS - AUDIBLE & VISUAL

- Air filter clogging manual
- Air filter clogging electronic*
- Battery voltage
- Engine oil pressure
- Fuel level
- Engine coolant temperature
- Emergency warning lamp
- Transmission error codes
- Transmission oil temperature
- Brake oil pressure (low pressure alarm light display)

INDICATORS

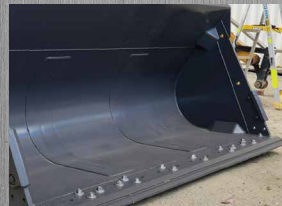
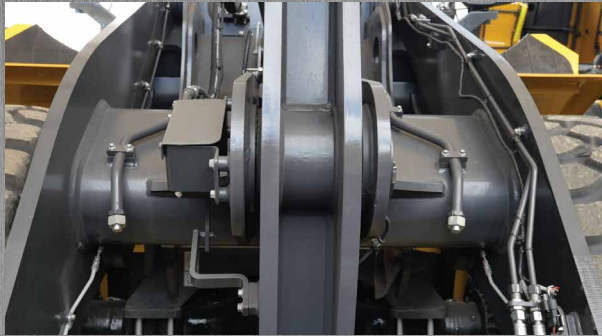
- Parking brake
- High beam
- Turn signal light
- Seat belt ON/OFF*
- Stabiliser module

*Optional inclusion

"A really friendly group of people with a huge range of equipment."

Alan Hall - Brooks Equipment Customer





XC938AS

Wheel Loader

DIMENSIONS & SPECIFICATIONS



Scan to view the XC938AS product brochure

MAIN SPECIFICATIONS

MODEL

Operating Weight	14000 kg
Rated Load	3500 kg
Bucket Capacity	2.1 m ³
Max. Digging Force	125 kN
Max. Tipping Load: Steering	7020 kg
Straight	8000 kg

ENGINE

Type	Cummins QSB5.9
	6 cylinder, inline four-stroke turbocharged, air-to-air intercooled, electronically controlled common rail
Max. Power	119 kW @ 2200 rpm
Peak Torque	720 Nm @ 1500 rpm
Displacement	5.9 L

AXLES

Drive System	Four-wheel drive
Front Axle	Fixed
Rear Axle	Oscillation angle 12°
Hub Reduction	Wheel-side planetary speed reducer
Differential:	Front Common differential (limited slip optional)
Rear	Common differential

SERVICE REFILL CAPCITIES

Fuel Tank	220 L
Cooling System	40 L
Engine Oil	20 L
Transmission	38 L
Front Axle	30 L
Rear Axle	30 L
Hydraulic Tank	95 L
Hydraulic System (Including tank)	202 L

HYDRAULIC SYSTEM

Type	Variable pressure hydraulic system
Pump	Piston pump
Control Valve	3 multi-way valve
System Pressure	18 Mpa
Lift Circuit	Yes
Tilt Circuit	Yes
Cylinder:	Lift 2-125 x 737 mm
	Tilt 1-140 x 719 mm
Cycle Time (rated load):	Lift 5.5 s
	Lower 3.5 s
	Tipping 2.5 s
	Total 11.5 s

STEERING SYSTEM

Type	Coaxial, flow-amplified
Pump	Variable displacement pump
Rated Oil Capacity	64 L/min
System Pressure	180 bar
Cylinder	Double acting
Steering Angle	40° both right and left angle
Features	Centre-point frame articulation
	Tilt and telescopic steering column

NOISE

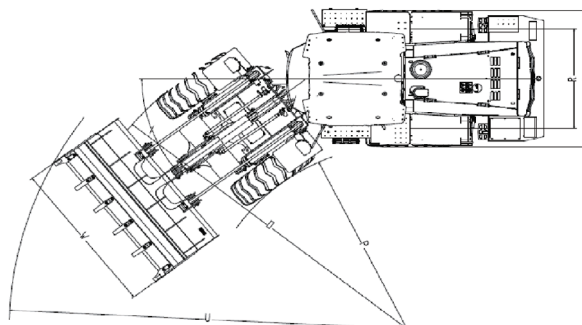
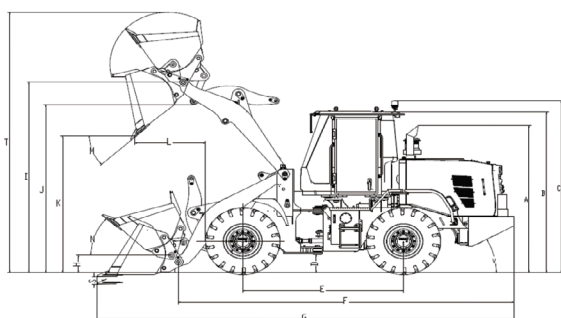
Exterior sound power level at cooling fan max. speed	105 dB
Operator sound pressure level	73 dB
Exterior sound power level	103 dB

TRANSMISSION

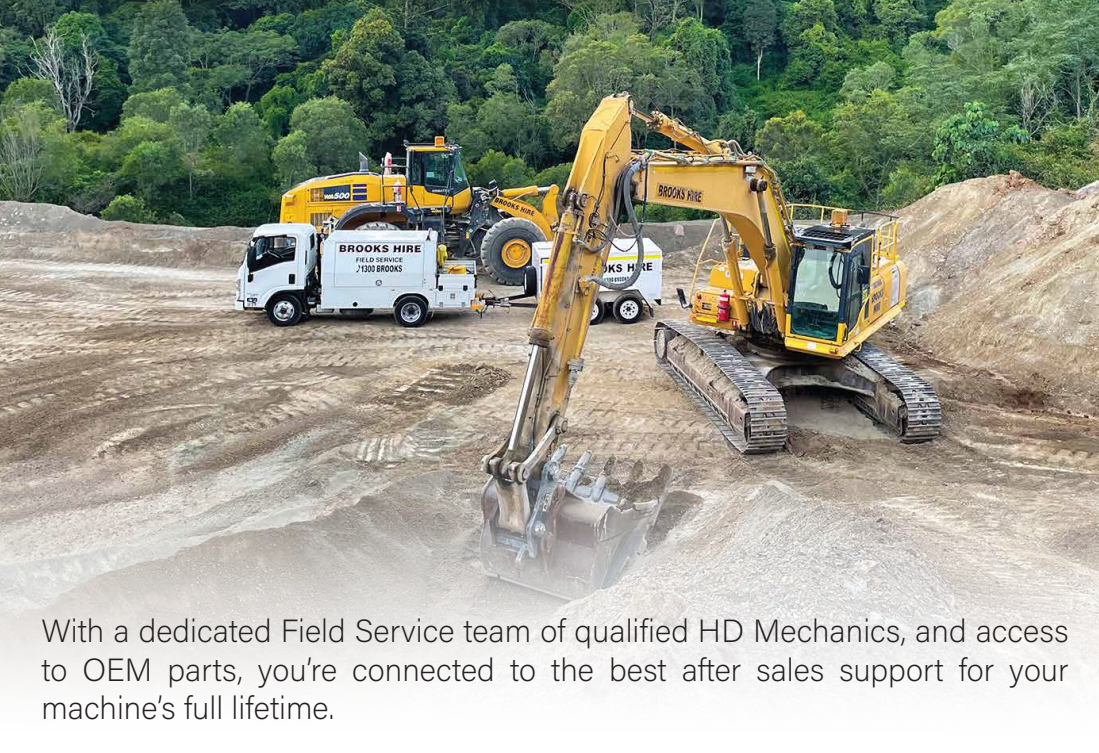
4 Speed Transmission	Full automatic transmission
Travel Speed FWD	7/13/24/38 km/h
Travel Speed RVS	7/14/25 km/h
Brake Distance	Less than 11 m

DIMENSIONS & WORKING SCOPE

A	Height: Top of exhaust pipe	3207 mm
B	Top of cab	3401 mm
C	Top of warning light	3689 mm
D	Ground Clearance	391 mm
E	Wheel Base	3000 mm
F	Overall Length (Without bucket)	6536 mm
G	Transportation Length (Bucket flat on ground)	8132 mm
H	Pivot Height : Flat bucket	470 mm
I	Max. lifting	4050 mm
J	Lift Arm Clearance (Max. lifting)	3445 mm
K	Dumping Clearance (Max. lifting and 45° dumping)	2890 mm
L	Dumping Reach (Max. lifting and 45° dumping)	1201 mm
M	Dumping Angle (Max. lifting and dumping)	45°
N	Rollback Angle: Ground	43°
	Carry	48°
O	Tyre Radius: Outside	5414 mm
P	Inside	2896 mm
Q	Overall Width	2450 mm
R	Wheel Track	1930 mm
S	Digging Depth	80 mm
T	Max. Lift Height	5446 mm
U	Turning Radius (Outside of bucket)	6160 mm
V	Gradeability	28°
W	Bucket Width	2550 mm
X	Steering Angle	40°



SERVICE LIKE NO OTHER



With a dedicated Field Service team of qualified HD Mechanics, and access to OEM parts, you're connected to the best after sales support for your machine's full lifetime.

QUALITY



Quality tested machines, developed and built for Australian conditions.

GUARANTEE



All of our XCMG models come with first class warranty cover.

ANY TIME



Our team of experts are available 24 hours a day, 7 days a week.



PARTS ON YOUR DOORSTEP

Access to parts and support is made easy through XCMG's Australian Technical and Service Centre.

SUPPORT FROM BRANCHES AUSTRALIA WIDE



With Brooks Equipment branches Australia-wide, you have complete coverage for support and servicing, wherever you are in the country.

BROOKS

EQUIPMENT

Discover more about your XCMG machine

📞 1300 BROOKS (276 657)

@ sales@brooksequipment.com.au

🌐 www.brooksequipment.com.au