

# POWERING YOUR PRODUCTIVITY

HIGH EFFICIENCY | CONVENIENT CONTROL | EASY MAINTENANCE



MADE FOR AUSTRALIAN CONDITIONS



## WHEEL LOADER **XC9108**

Product Specifications

OPERATING WEIGHT

**35,000 kg**

RATED POWER

**277 kW / 2100 rpm**

BUCKET CAPACITY

**6.2m<sup>3</sup>**

ENGINE

**Cummins X12**

# Built for tough Aussie conditions.



## PRODUCT HIGHLIGHTS

- The optimised structure reduces irregular welding seams and effectively enhances the robustness of critical bearing components, demonstrating exceptional performance under torsion and impact loads, in various conditions.
- With independent intellectual property rights of XCMG's new high-end series appearance, the loader is equipped with double emergency stop switches and rearview camera; especially suitable for loading and unloading in sand and gravel quarries, mixing stations, and coal yards.
- The spacious cab is user-oriented and scientifically designed to ensure operational safety, reduce fatigue, and provide the operator with an optimal operating experience.
- The loader features a maintenance platform with centralised design of maintenance points. The back-flip hood can be opened at a large angle, ensuring easy access to the maintenance points and minimising downtime.

## MACHINE WALKAROUND

### POWERTRAIN

Cummins engine  
 Engine intake preheating  
 Engine oil long-distance discharge  
 Oil-water separator  
 Centrifugal air pre-filter  
 Coolant discharge outlet port  
 Manual/ automatic gear shift  
 Front axle limited slip differential lock  
 875/65R29 Tyre

### HYDRAULIC SYSTEM

Independent cooling system  
 Reversible cooling fan  
 Bucket lift limit  
 Bucket auto-levelling  
 Hydraulic oil cooler  
 Single pedal brake

### PRESSURE CHECK

Working system pressure diagnosis interface  
 Steering system pressure diagnosis interface  
 Transmission pressure diagnosis interface

### LUBRICATION SYSTEM

Automatic lubrication system

### CABIN

ROPS/FOPS cab

\*Optional inclusion

Adjustable steering wheel  
 1 interior rearview camera  
 2 exterior rearview cameras  
 Right slide window  
 Protective mat (interior)  
 Front sun visor  
 Electric heated, adjustable air suspension seat  
 Two-point safety belt  
 Tinted safety glass  
 Cup holder  
 Emergency hammer  
 Clothes hook  
 Magazine bag  
 Cooling and heating air-conditioner

### SAFETY FEATURES

Left/right anti-slip stairs  
 Splash guard (front)  
 Boom safety rod  
 Articulation lock rod

### WORKING DEVICE

Standard arm  
 6.2m<sup>3</sup> (blade-type)

### ELECTRIC SYSTEM

Electrical air cleaner blockage alert  
 Battery voltage display

Engine tachometer  
 Engine oil pressure gauge  
 Fuel level display  
 Engine coolant temperature display  
 Engine malfunction code  
 Transmission oil temperature display  
 Transmission malfunction code  
 Working hour display  
 Rearview camera  
 Parking brake display  
 Low-pressure brake warning display  
 Battery cathode switch  
 Single joystick control (FNR integral switch)  
 Working light (cab top - 4 front, 2 rear)  
 Rotatable warning light  
 2 rear combination lights  
 2 LED working lights (rear hood)  
 Front and rear wiper  
 Radio/ USB player

### OTHER

Traction pin



# DELIVERING PEAK PERFORMANCE

## POWER BACKED BY AN INTELLIGENT SYSTEM

### ENGINE

The Cummins X12 engine features an electric start and shut-off function. With a three-stage filtration system and a multi-level fuel filtration system, it is designed to meet the requirements of various working conditions.

### INTEGRATED CONTROL JOYSTICK

The integrated control joystick for the working equipment combines the FNR switch and KD gear function (single-handle operation), allowing quick and convenient changes to the machine's travel direction and reducing the overall loading cycle time.

### HYDRAULIC SYSTEM

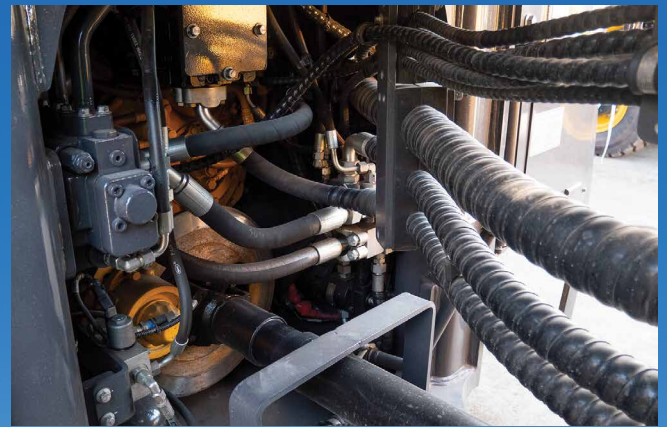
The load-sensing, fully variable hydraulic system delivers pressure and flow according to the equipment needs, significantly improving fuel efficiency and operational productivity.

Full variable hydraulic articulated steering system: The dual steering limits contain hard (mechanical) and soft (hydraulic) limits, which can reduce the steering impact and enhance reliability.

### TRANSMISSION SYSTEM

The transmission system features an electronically controlled gearbox with KD gear, along with neutral start protection and gear lock functions.

The drive axle features a heavy-duty wet-type design with maintenance-free multi-disc wet brakes, extending the axle's service life.



*"A really friendly group of people with a huge range of equipment."*

**Alan Hall - Brooks Equipment Customer**



# EXCELLENCE IN ITS FIELD

## **AUTOMATIC LEVELLING**

The bucket has an automatic levelling function at any position, removing the need to adjust the bucket state for subsequent loading tasks, thereby simplifying the operator's workload.

## **STEERING**

The ride control ensures the equipment maintains stable operation without external interference.

The load-sensitive electro-hydraulic steering system enables precise machine control, enhancing operator comfort.

## **CAB**

The intelligent temperature-controlled, high-power air conditioning system and pressurised cab ensure a comfortable, quiet and dust-free working environment with an optimal temperature.

Connected to the frame with silicone oil shock absorbers, it significantly reduces cab vibration.

The air-suspended shock-absorption composite control seat ensures a comfortable operating experience.

## **REARVIEW CAMERA**

The advanced rearview camera provides the operator with great rear visibility, ensuring reliable safety during operation.



# SAFETY & MAINTENANCE

## EASY ACCESS

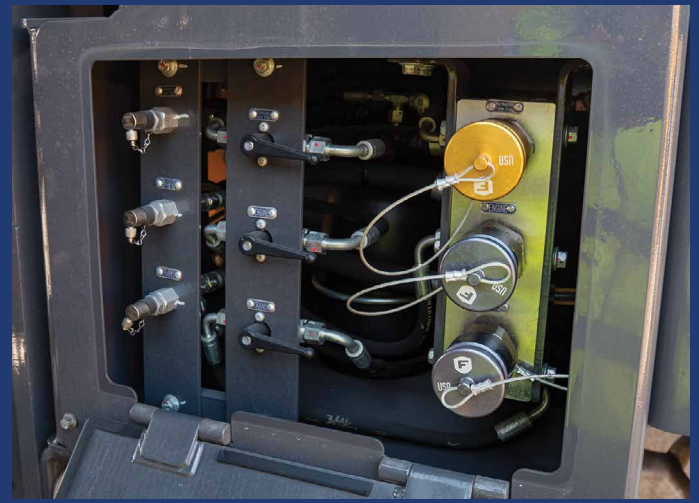
Left and right side access to the machine, ensures safety and convenience. With multiple maintenance platforms and centralised service points, the loader features rotatable structures of the hood, facilitating easy maintenance and minimising downtime.

## FLIP HOOD

The large-angle rear-flip hood provides full access to the engine and cooling system, making maintenance tasks like checking oil, filling engine oil, and replacing filters, effortless and convenient.

## CENTRALISED FILLING

The centralised lubrication system automatically applies grease to each articulation point, preventing lubrication failure caused by clogging. Fast filling fuel and hydraulic oil improves overall filling efficiency. Centralised oil sampling offers high convenience.



## BRAKE SYSTEM

Full hydraulic, dual-circuit, wet service brake and calliper disc parking brake. Front and rear axle brakes are independent of each other and feature low-pressure alarm protection. The combination of emergency brake and parking brake ensures safe operation and driving.

## EMERGENCY STEERING

The standard emergency steering system activates quickly if the primary system fails, ensuring safe loader steering, reducing accident risk, and promoting a safe work site.

## STRUCTURAL COMPONENTS

The finite element analysis and load spectrum-based optimisation design of structural components and fatigue test verification, can effectively cope with severe working conditions. Reducing stress concentration and eliminating local weakness, ensures the structural components meet the strength requirements for uneven terrain.

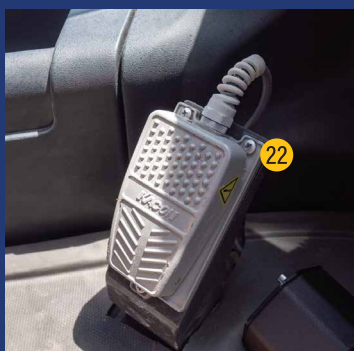
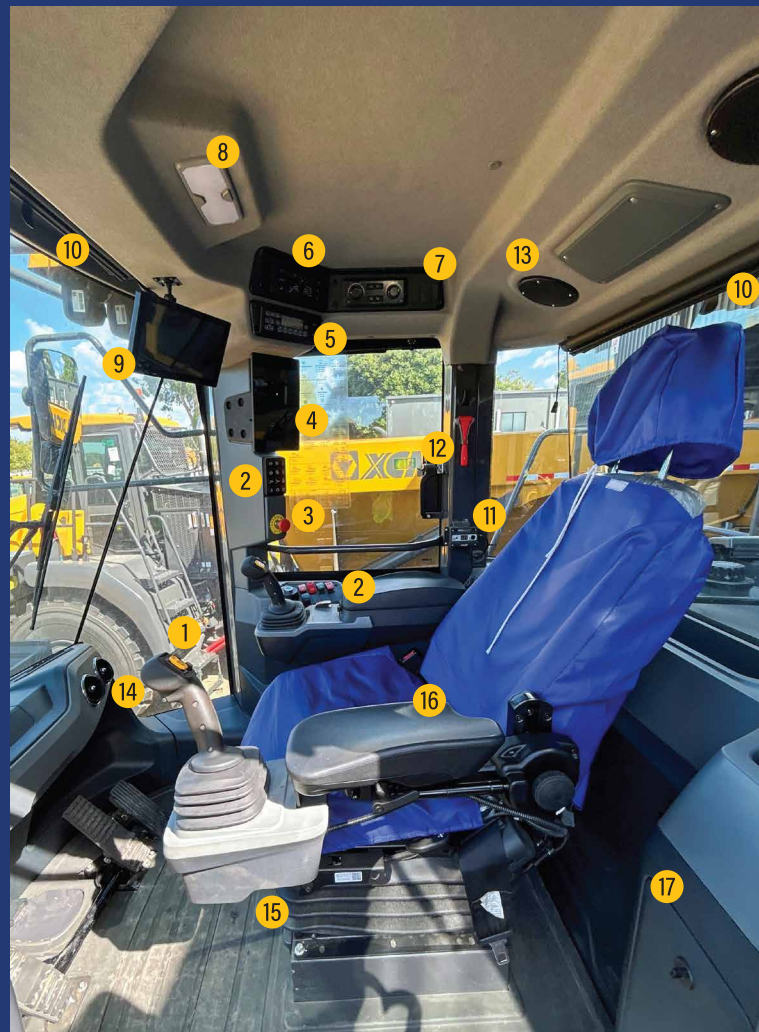
## DURABLE DESIGN

Double-tapered roller bearings are utilised to enhance loading capacity and driving stability. Weld toe fatigue improvement technology effectively prevents weld cracks in hard conditions, ensuring durability and reliability. Electrostatic powder coating and specialised anti-corrosion technology effectively solve rusting and corrosion.



# CONFIGURED FOR EASE OF CONTROL

- 1 FNR Joystick Control
- 2 Operator Controls
- 3 Emergency Stop
- 4 Colour LCD Monitor
- 5 Radio/ USB/ Bluetooth Player
- 6 Lighting Controls
- 7 A/C & Heating Controls
- 8 LED Light
- 9 Reverse Camera Display
- 10 Sunshade
- 11 Pressure Monitor
- 12 Escape Hammer
- 13 Speakers
- 14 All-Around Air Vents
- 15 Adjustable Air Suspension Seat
- 16 Adjustable Arm Rest
- 17 FNR Gauge & Maintenance Access
- 18 Cooler Compartment
- 19 USB Port & 24V 120W Power Outlet
- 20 Cup Holder
- 21 Rear View Mirror
- 22 Differential Lock





# XC9108

## Wheel Loader

### DIMENSIONS & SPECIFICATIONS



Scan to view the XC9108 product brochure

#### MAIN SPECIFICATIONS

##### OVERALL PARAMETERS

Operating Weight	35,000 kg
Bucket Capacity	6.2 m <sup>3</sup>
Rated Load	11,000 kg
Max. Breakout Force	280 kN
Tipping Load:	
Straight over	25,800 kg
Fully articulated	22,100 kg

##### ENGINE

Type	In-line 6-cylinder, air-to-air intercooler, electronic common rail high-pressure injection.
Rated Power	277 kW @ 2100 rpm
Max. Power	336 kW @ 1800 rpm
Max. Torque	1898 Nm @ 1200-1600 rpm
Displacement	11.8 L

##### DRIVELINE

Transmission	4WG310 full automatic
Travel Speed	
FWD 1st, 2nd, 3rd, 4th	6.5, 11.5, 24.5, 35 km/h
RVS 1st, 2nd, 3rd	6.5, 11.5, 24.5 km/h
Brake Distance	14 m
Tyre	875/65R29

##### AXLE

Type	Four-wheel drive
Front Axle	Fixed
Rear Axle	Centre oscillation, ±10°
Reduction Gear	Planetary final drive in wheel hubs
Differential	Front axle differential

##### HYDRAULIC SYSTEM

Type	Full variable hydraulic system
Pump	Piston pump
Rated Flow	540 L/min
Control Valve	Standard hydraulic control multiway valve
System Pressure	28 MPa
Total Cycle Time	≤11.5 s

##### STEERING SYSTEM

Type	Flow amplifier load-sensitive steering system
Pump	Piston pump
Rated Flow	270 L/min
Hydraulic Cylinder	21 MPa
System Pressure	2-110x555 mm
Steering Angle	±40°

##### SOUND

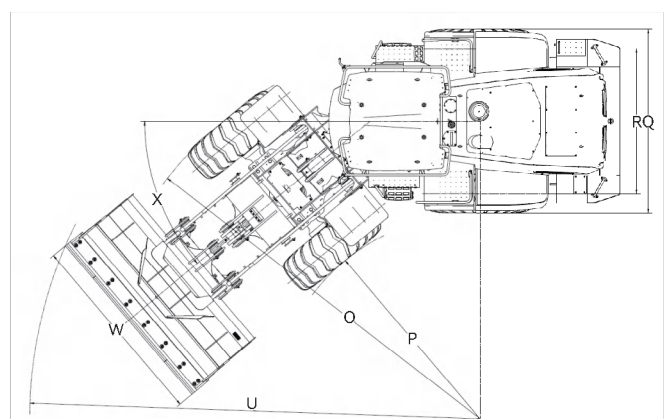
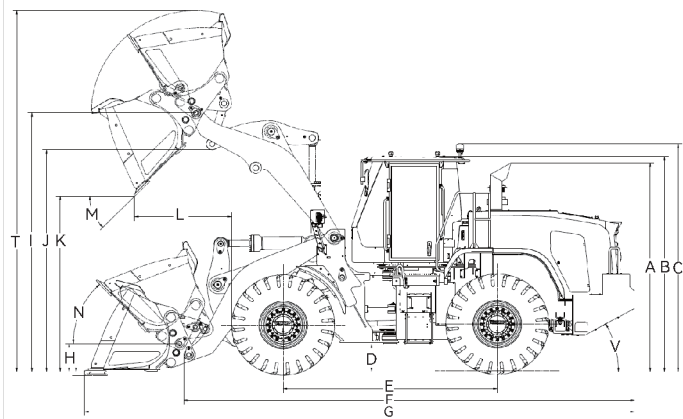
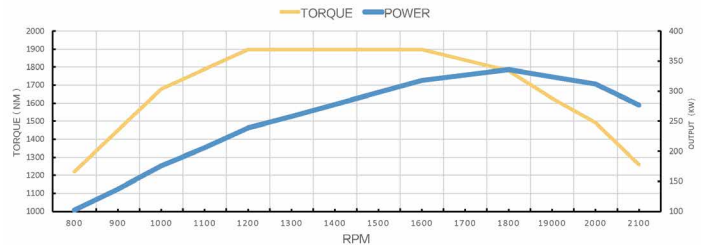
Exterior Sound Power Level (Max. cooling fan speed)	116 dB
Sound Pressure Level	76 dB
Exterior Sound Power Level	116 dB

##### REFILL CAPACITIES

Diesel	420 L
Engine Oil	34 L
Front Axle	54 L
Rear Axle	54 L
Transmission	64 L
Coolant	62 L
Hydraulic Oil	160 L

##### DIMENSIONS & WORKING SCOPE

A Height: Top of exhaust	3715 mm
B Top of cab	3730 mm
C Top of warning light	3950 mm
D Ground Clearance	470 mm
E Wheel Base	3800 mm
F Overall Length (Without bucket)	7480 mm
G Transportation Length (Bucket flat on ground)	9800 mm
H Height to Hinge Pin: Bucket levelling	550 mm
I Full lift	4650 mm
J Lift Arm Clearance (Full lift)	3980 mm
K Dumping Clearance (Bucket at 45°)	3250 mm
L Dumping Reach (Bucket at 45°)	1400 mm
M Dumping Angle at Full Lift on Stopper	45°
N Rollback Angle	48°
O Turning Radius (Over tyres)	6850 mm
Q Width Over Tyres	3398 mm
R Wheel Track	2500 mm
T Max Lifting Height	6450 mm
U Turning Radius (Over Bucket)	7755 mm
V Departure Angle	25°
W Bucket Width	3600 mm
X Steering Angle	40°



# SERVICE LIKE NO OTHER



With a dedicated Field Service team of qualified HD Mechanics, and access to OEM parts, you're connected to the best after sales support for your machine's full lifetime.

## QUALITY



Quality tested machines, developed and built for Australian conditions.

## GUARANTEE



All of our XCMG models come with first class warranty cover.

## ANY TIME



Our team of experts are available 24 hours a day, 7 days a week.



# PARTS ON YOUR DOORSTEP

Access to parts and support is made easy through XCMG's Australian Technical and Service Centre.

# SUPPORT FROM BRANCHES AUSTRALIA WIDE



With Brooks Equipment branches Australia-wide, you have complete coverage for support and servicing, wherever you are in the country.

# BROOKS

EQUIPMENT

Discover more about your XCMG machine



1300 BROOKS (276 657)

@ sales@brooksequipment.com.au

www.brooksequipment.com.au