

TRUE VERSATILITY ON DEMANDING SITES



MADE FOR AUSTRALIAN CONDITIONS



TRACK LOADER

XC7-TV12

Product Specifications

OPERATING WEIGHT

5,150 kg

RATED POWER

61.3 kW / 2500 rpm

RATED LOAD CAPACITY

1,360 kg

ENGINE

YANMAR
4TNV98T-ZCNTYBC

Built for tough Aussie conditions.



PRODUCT HIGHLIGHTS

- With a Yanmar 4TNV98CT-NTY engine, delivering 53.7kW, this engine meets Tier 4 emissions standards, offering a strong balance of power, fuel efficiency, and environmental compliance.
- Built with user comfort and safety in mind, the XC7-TV12 features a ROPS/FOPS-certified cab with integrated HVAC, a suspension seat, and a rearview camera. These enhancements help reduce fatigue and improve visibility.
- With a rated operating capacity of 1,360kg and a tipping load of 3,800kg, the XC7-TV12 is well-suited for diverse tasks. Its quick-attach coupler and third-function hydraulics simplify switching between attachments, maximising productivity across construction, landscaping, and municipal jobs.

MACHINE WALKAROUND

The XCMG XC7-TV12 is a compact, high-performance track loader designed for versatility, operator comfort, and efficiency in demanding jobsite conditions. It comes equipped with the following equipment.

ENGINE

Yanmar Stage III
4 cylinder, 4 stroke
Electronic injection system
Engine emergency stops (1 inside cab, 1 outside)
Lockable isolator (starter motor) yellow
Hydraulic fan reversible*

TRANSMISSION

Double speed
Track type

HYDRAULIC SYSTEM

Electro-hydraulic proportional control
Multi-function electric control
High flow
Main pump
Park brake
Hydraulic quick hitch
Quick hitch (five joint)
Ride control*
Automatic boom lifting levelling
Hydraulic safe lock
Lock of auxiliary pipe

Proportional auxiliary flow control
Floating function

WORKING DEVICE

4 in 1 bucket capacity 0.6m³
High performance track*
Boom lift: vertical
Anti-burst valves for crane jib*

CABIN

ROPS & FOPS
Escape hammer
Fire extinguisher*
Mechanical suspension seat
Air suspension seat*
Rearview camera
Rearview mirrors
Wiper
A/C and heating

ELECTRIC

Lockable isolator (battery) red
12V port
Radio
UHF radio*

Beacon
Jump start

SAFETY FEATURES

Fire extinguisher bracket
Decals

DOCUMENTATION

Manuals: Operation & Maintenance,
Spare Parts



*Optional inclusion

POWERFUL PERFORMANCE

YANMAR ENGINE

The Yanmar engine provides an output power of 61.3kW with unmatched performance.

POWERTRAIN

The hydrostatic transmission provides quick travel response and aggressive drive. Two speed is standard, with hydraulic released parking brakes.

HYDRAULIC SYSTEM

The axial-piston hydrostatic pump minimises hydraulic loss for better fuel economy by delivering as much flow as required.

High flow and third function valve are standard for work tool attachments.

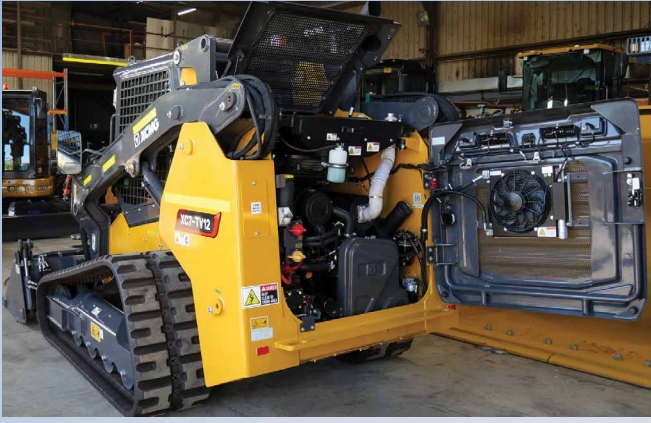
VERSATILITY

The quick coupler and third function hydraulic system come as standard, and can easily and quickly switch between a range of attachments.

The coupler is designed at ISO standard, compatible with a wide range of attachments.



SAFETY & MAINTENANCE



ROPS & FOPS

Rollover Protection System and Falling Object Protective Structure are standard, and compliant with ISO standards.

REARVIEW CAMERA

The standard rearview camera is available on the TV12, integrating seamlessly into the display system.

INTERLOCK SYSTEM

The front door utilises an interlocking system, preventing the boom from lifting unless closed.

The armrest's interlocking system, allowing the engine start-up once it's down, in position.

GROUND LEVEL ACCESS

The rear door and AC cooler's core swing out easily.

The hydraulic drive cooling system, and radiator positioned on the top, provide excellent serviceability.

Parts that require daily service, are easily accessed from the ground. The engine fuel and air filters are located on the right side, and the engine oil filter and fuel-water separator are on the left side.

EASY MAINTENANCE

The cab is designed for easy access to the machine's systems for easy replacement of the hydraulic key components and filter, able to swing up more than 80 degrees.



DESIGNED FOR THE OPERATOR

CAB

The machine is designed with a ROPS/ FOPS certified cab. The suspension seat provides greater comfort for the operator, with EH controls and ISO/H control mode as standard.

ALL DAY COMFORT

The spacious interior cab design helps the operator comfortably and productively work. The pressurised cab offers a cleaner and quieter working environment.

FOUR-SEASON COMFORT

Designed with air-conditioning is standard, the TV12 cab's design is optimised with ducts and vents to maximise air flow. The AD filter is easily replaceable.

EASY TO OPERATE

Joysticks are equipped with ISO/H mode, ISO or H patterns can be easily activated.

HIGH RESOLUTION MACHINE MONITOR

The colour monitor can display working hours, temperature, fuel level, maintenance information and much more.



1 Adjustable seat

11 Hydraulic release

2 Hydr piloted joystick

12 Cup holder

3 Storage compartment

13 UHF radio

4 Coat hook

14 Rearview mirror

5 All-around air vents

15 Colour LCD monitor

6 Radio/ Bluetooth controls

16 Operator controls

7 Fire Extinguisher

17 Emergency stop

8 LED light

18 Turtle/ rabbit mode

9 Wiper washer fluid refill

19 Key start/ stop switch

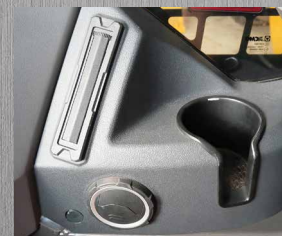
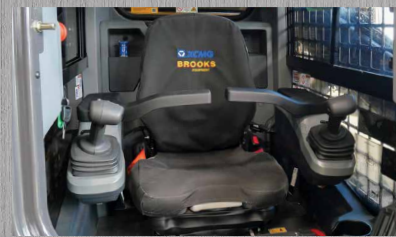
10 Seat belt

20 Openable window



TRUE VERSATILITY

- XC7-TV12 AT A GLANCE -



XC7-TV12

Track Loader

DIMENSIONS & SPECIFICATIONS



Scan to view the XC7-TV12 product brochure

MAIN SPECIFICATIONS

ENGINE

Model	Yanmar EU Stage V/ Tier 4 Final emissions certified 4TNV98T-ZCNTYBC
Type	Water-cooled, 4-cycle
Aspiration	Turbocharged & air-to-air intercooled
Number of Cylinders	4
Displacement	3.319 L
Gross Power	61.3kW 2500 r/min
Peak Torque	269~293 Nm/1625±25 r/min
Fuel System	Direct injection
Air Cleaner	dry type with double elements

COOLING

Fan Drive	Hydraulically driven
-----------	----------------------

POWER TRAIN

Type The hydrostatic transmission provides a quick travel response and powerful operation.

Travel Speed

1st		
	FWD	8 km/h
	RVS	8 km/h
2nd		
	FWD	14 km/h
	RVS	14 km/h

HYDRAULIC SYSTEM

System Type	Variable driving and working hydraulic system, EH Joystick
Pump Flow (standard)	57 ml/r
Traveling Pressure	35 MPa
Raise Time	≤5.5 s
Dump Time	≤2 s
Lowering Time (empty)	≤3.5 s
Total Cycle Time	≤11 s

PERFORMANCE

Operating Weight	5150 ± 50 kg
Rated Operating Capacity	≥1360 kg
Boom Breakout Force	≥28 kN
Bucket Breakout Force	≥33 kN

ELECTRICAL

Voltage	12 V
Battery Capacity	95 AH
Alternator Rating	12 V / 80 A

REFILL CAPACITY

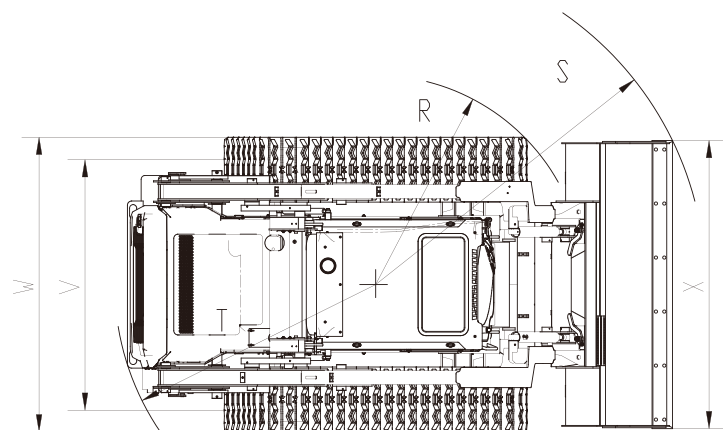
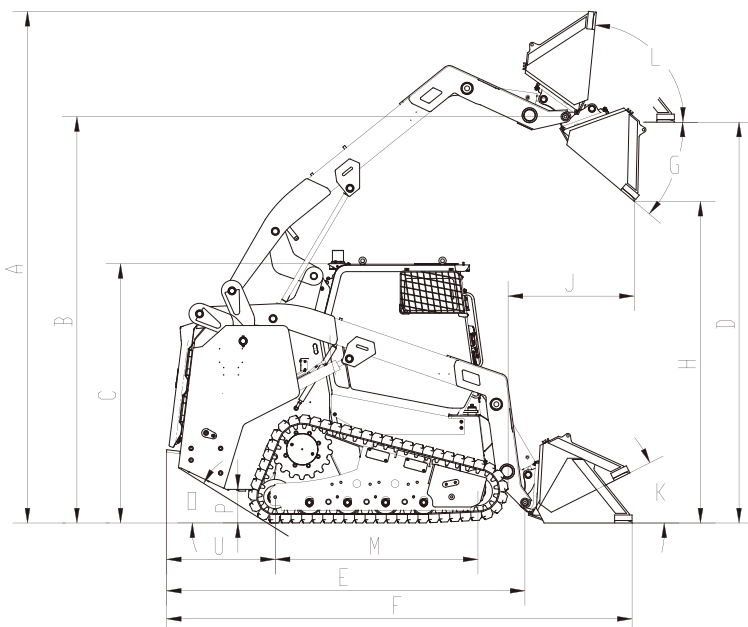
Cooling System	40 L
Fuel Tank	105 L
Engine Oil	9.4 L
Hydraulic Tank	40 L
Hydraulic System Total	53 L
Chain Box (Each Side)	/

NOISE

Inside Cab	≤81 dB
Outside Cab	≤103 dB

DIMENSIONS & WORKING SCOPE

A	Max Overall Height	4160 mm
B	Height to Hinge Pin at Max. Lift	3300 mm
C	Height to Top of Cab	2100 mm
D	Clearance Bucket Bottom to Ground	3136 mm
E	Length Without Bucket	2915 mm
F	Length With Bucket	3786 mm
G	Dump Angle (full lift height)	40°
H	Dump Height at Max. Lift and Dump	2615 mm
K	Bucket Rollback at Ground Level	26°
L	Full Rotation Angle of Bucket at the Highest Point	84°
J	Reach at Max. Lift and Dump	1025 mm
M	Wheelbase	1640 mm
O	Angle of Departure	31°
P	Ground Clearance	216 mm
R	Front Turning Radius Without Bucket	1468 mm
S	Front Turning Radius With Bucket	2293 mm
T	Rear Turning Radius	1806 mm
U	Bumper Overhang Behind Rear Axle	885 mm
V	Tread	1595 mm
W	Width Without Bucket	2045 mm
X	Width Bucket	2130 mm



SERVICE LIKE NO OTHER



With a dedicated Field Service team of qualified HD Mechanics, and access to OEM parts, you're connected to the best after sales support for your machine's full lifetime.

QUALITY



Quality tested machines, developed and built for Australian conditions.

GUARANTEE



All of our XCMG models come with first class warranty cover.

ANY TIME



Our team of experts are available 24 hours a day, 7 days a week.



PARTS ON YOUR DOORSTEP

Access to parts and support is made easy through XCMG's Australian Technical and Service Centre.

SUPPORT FROM BRANCHES AUSTRALIA WIDE



With Brooks Equipment branches Australia-wide, you have complete coverage for support and servicing, wherever you are in the country.

BROOKS

EQUIPMENT

Discover more about your XCMG machine



1300 BROOKS (276 657)

@ sales@brooksequipment.com.au

www.brooksequipment.com.au