



SY750H

KING OF MINING EQUIPMENT ASSET OF GREAT VALUE



SELLING POINTS

● Excellent performance

10% higher work efficiency with 10% lower consumption, huge digging force, specially designed for mining working condition. more smooth operation.

● Longer lifetime

By comprehensive testing system, the designed lifetime reaches 20000 hours, 15% less pressure of key compents compared with 40 tonage models, but 30% longer lifetime.

● Super adaptation

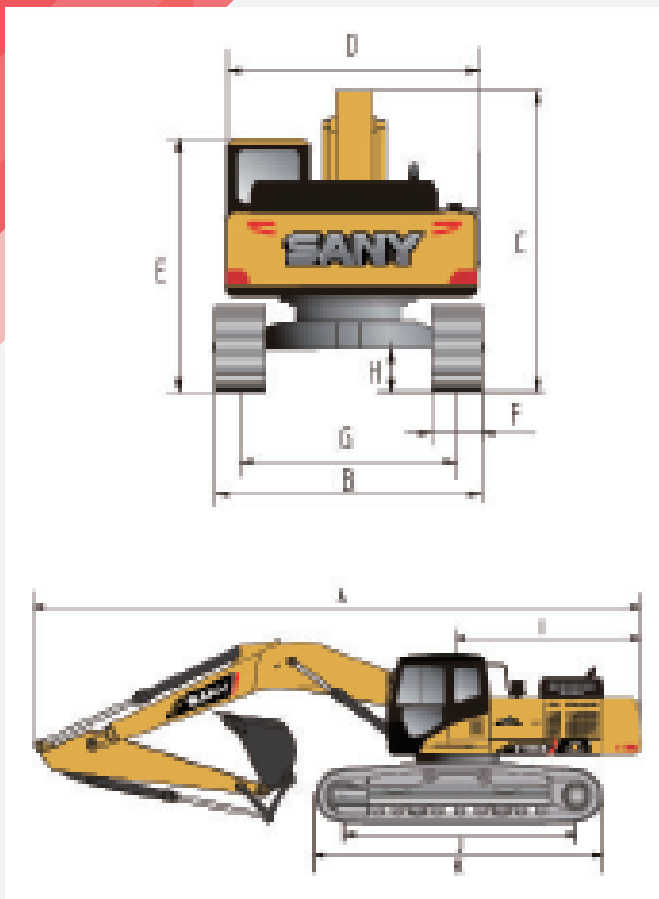
More than 20 kinds of optional working devices, good protection of the engine with multiple filtration system, independent oil radiator to keep proper working temperature.

● Low maitenance cost

Much more convenient maintenance operation, durable oil and filters to make longer maitenance period, 50% less expense.

Machine Dimensions(mm)

Standard



	SY750H
A Transport Length	12865
B Transport Width	4320
C Transport Height	4855
D Upper Width	3460
E width to the cabin top	3775
F standard track shoe width	650
G Track Gauge	3380/2780
H Minimum Ground Clearance	880
I Tail Swing Radius	4220
J Length Center Idler to Center Sprocket	4650
K Track Length	5865

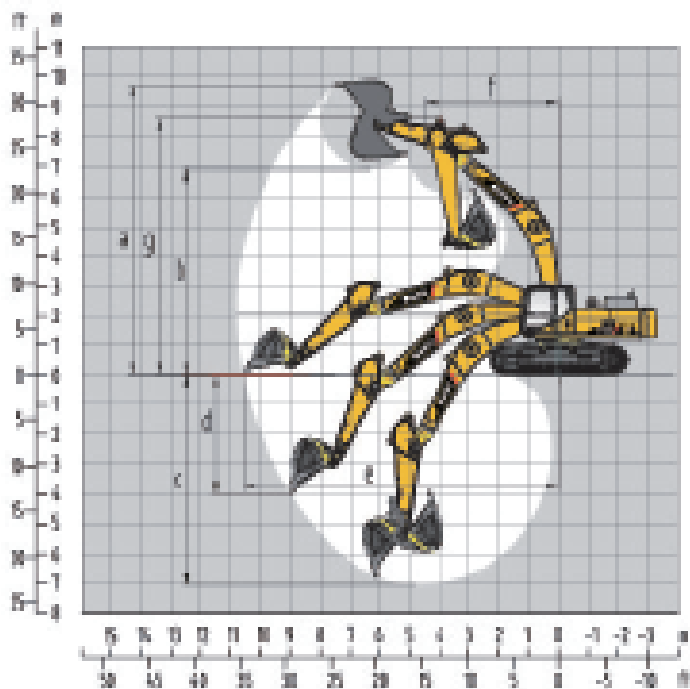
Parameters

Standard

	SY750H
Operating Weight	75000kg
Bucket Capacity	4.2m ³
Engine rated Power	377kW
Travel Speed	4.5/2.9km/h
Swing Speed	7.3rpm
gradeability	70%/35°
ground pressure	110kPa
bucket digging force	402kN
arm digging force	345kN

Operating Range(mm)

Standard



	SY750H
a Maximum Digging Height	11200
b Maximum Dumping Height	7250
c Maximum Digging Depth	7620
d Maximum Vertical Wall Digging Depth	4320
e Maximum Digging Reach	12050
f Minimum Swing Radius	5520
g Maximum Height at Minimum Swing Radius	9780

Sany Heavy Machinery Co.,Ltd..

SANY industrial Park, Dongcheng Avenue, Economic and Technological Development Zone, Kunshan City, Jiangsu Province, China

Post code : 215300

Hotline : 4008-28-2318

Inquiry : 4008-87-9318

Website : <http://www.sanygroup.com>



Notes

no announcement for any renewal of technology and material. Pictures showed above may contain optional devices

ZJSYX0604CH(16年1月)

Printed in CHINA