

# XGS58K TELESCOPIC BOOM LIFT

# SOLID TO SUCCEED



## TELESCOPIC BOOM LIFT

# XGS58K

Product Specifications

WORKING HEIGHT

192.26 ft

PLATFORM HEIGHT

185.7 ft

RATED POWER

74.4 kW

ENGINE

Duetz TD 3.6 L4

## SPECIFICATIONS

XCMG's XGS58K telescopic boom lift features continuous 360 degree turntable rotation, and a minimum outside turning radius of 7.6m (axle retracted).

## FEATURES

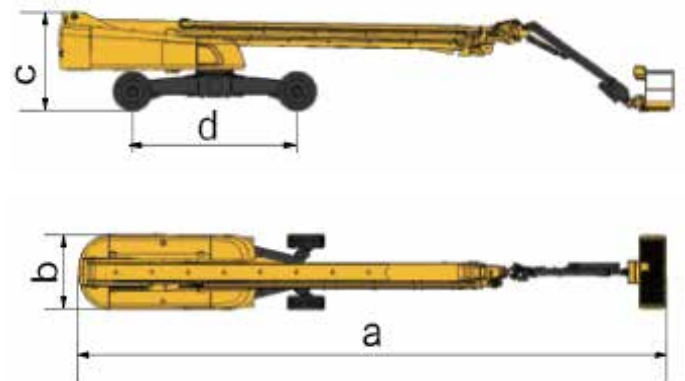
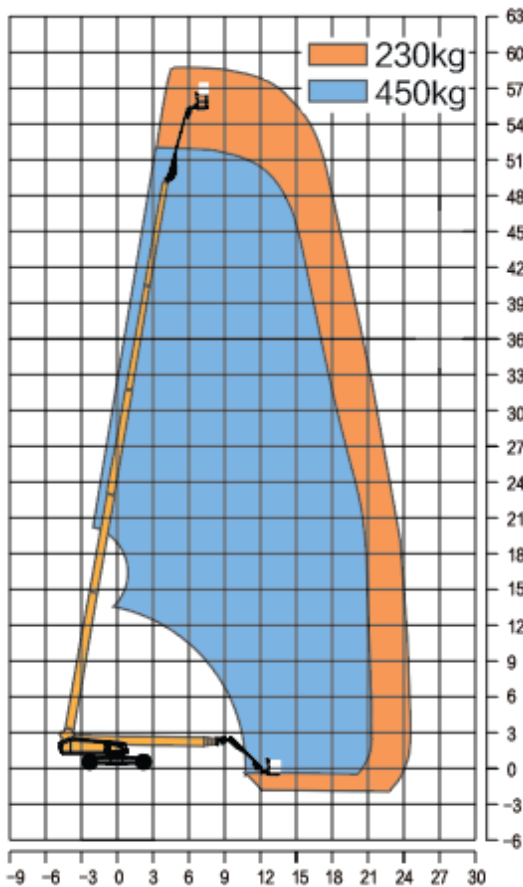
- Maximum working height is 58.6m, the maximum load-bearing capacity is 450kg, and the maximum climbing capacity is 45%.
- 360° continuous rotation for more convenient operation.

## OPTIONS

- Anti-extrusion device
- Tool tray
- Working light
- Anti-squeeze hand-assisted track of the platform
- Half-height mesh platform
- Aircraft protection device
- Anti-falling assembly

## KEY SPECIFICATIONS

Max. working height	58.6 m
Max. platform height	56.6 m
Max. working range	24.4 m
Max. load capacity	230 kg (unrestricted)/450 kg (restricted)
Walking speed (stowed)	4.5 km/h
Walking speed (elevated/extended)	0.3 ~ 0.5 km/h
Boom luffing range	-1 ~ +80° / -45 ~ +75°
Rotation angle of turntable	360° continuous
Tailswing	2320 mm
Rotation angle of platform	160°
Min. turning radius inside	7600 (retracted) / 2800 (extended)
Min. turning radius outside	9500 (retracted) / 6600 (extended)
Overall weight	27900 kg
Gradeability (counterweight end up / down)	45% / 30%
Engine model	Duetz TD 3.6 L4
Rated power	74.4 kW
Hydraulic tank capacity	250 L
Hydraulic system capacity	430 L
Fuel tank capacity	200 L
a Overall length (stowed)	19450 mm
Overall length (transportation)	14600 mm
b Overall width (shaft retracted / extended)	2490 / 5030 mm
c Overall height	3070 mm
Platform dimension	2400 x 900 x 1150 mm
d Wheelbase (shaft retracted / extended)	5220 / 4590 mm



☎ 1300 BROOKS (276 657)

@ sales@brooksequipment.com.au

🌐 www.brooksequipment.com.au