

XGS40K TELESCOPIC BOOM LIFT

ENHANCED
TECHNOLOGY,
ELEVATED
PERFORMANCE



TELESCOPIC BOOM LIFT **XGS40K**

Product Specifications

WORKING HEIGHT
131.89 ft

PLATFORM HEIGHT
125.33 ft

RATED POWER
55.8 kW

ENGINE
Cummins QSF2.8t 3TC71

SPECIFICATIONS

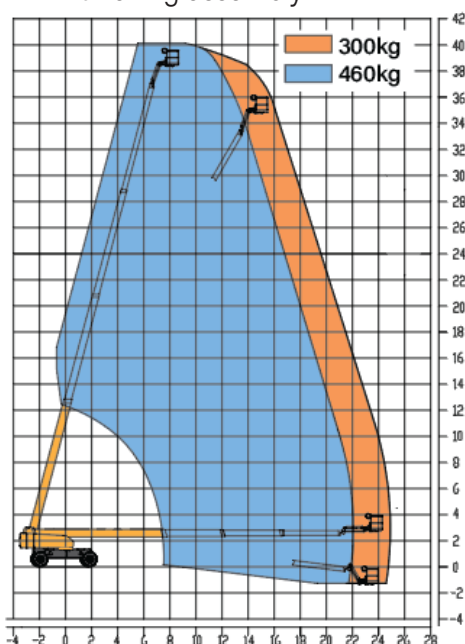
XCMG's XGS40K telescopic boom lift features continuous 360 degree turntable rotation, and minimum outside turning radius of 6.8m (axle retracted). Simple, efficient, safe and reliable, it can meet the needs of users in a wide array of industries, including construction, bridge and equipment maintenance, shipyards, petrochemicals and leasing.

FEATURES

- Four-wheel drive, electronically controlled steering, wide foam tires, the climbing ability has reached the advanced level in the same industry.
- Dual operating range curve control technology, operating height, range, and load capacity are industry-leading; at the same time, the height of the whole machine is controlled within 3m, which is convenient for transportation.
- Maximum working height is 40.2m, the maximum load-bearing capacity is 460kg, and the maximum climbing capacity is 40%.
- 360° continuous rotation for more convenient operation.

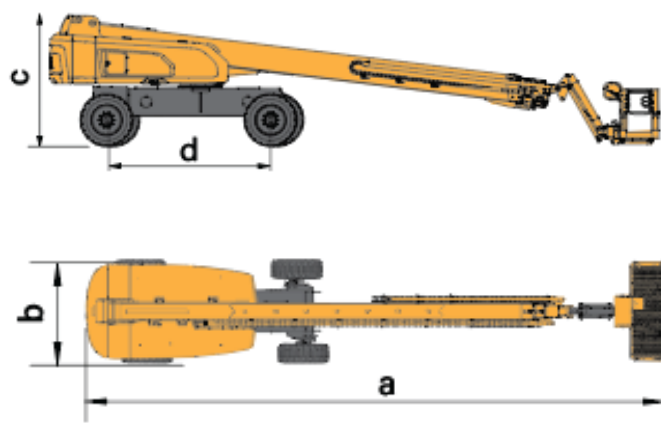
OPTIONS

- Anti-extrusion device
- Tool tray
- Working light
- Anti-squeeze hand-assisted track of the platform
- Half-height mesh platform
- Aircraft protection device
- Anti-falling assembly



KEY SPECIFICATIONS

Max. working height	40200 mm
Max. platform height	38200 mm
Max. working range	24900 mm
Max. load capacity	300 kg (unrestricted)/460 kg (restricted)
Walking speed (stowed)	5 km/h
Walking speed (elevated/extended)	0.5 km/h
Boom luffing range	-6.5 ~ +75°
Rotation angle of turntable	360° continuous
Tailswing	2355 mm (Shaft retracted) / 1700 mm (Shaft extended)
Rotation angle of platform	160°
Min. turning radius (inside/ outside)	6800 mm / 5800 mm
Overall weight	21460 kg
Gradeability (counterweight end up or down)	40% / 30%
Engine model	Cummins QSF2.8t 3TC71
Rated power	55/53/55.8 kW
Hydraulic tank capacity	260 L
Hydraulic system capacity	400 L
Fuel tank capacity	180 L
a Overall length (stowed)	14060 mm
Overall length (transportation)	12500 mm
b Overall width	2490 mm / 3800 mm
c Overall height	3000 mm
Platform dimension	2400 x 900 x 1150 mm
d Wheelbase	3800 mm



☎ 1300 BROOKS (276 657)

@ sales@brooksequipment.com.au

🌐 www.brooksequipment.com.au