



- Boom suspension system
- Locking front axle
- Lift and return to dig kick-out
- Transmission neutralizer
- GPS
- Single joystick control
- Preplumbed for quick coupler
- Reversible fan
- Rear view camera



WHEEL LOADERS

SW405K

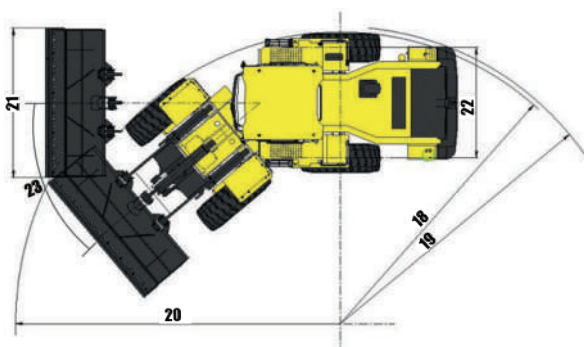
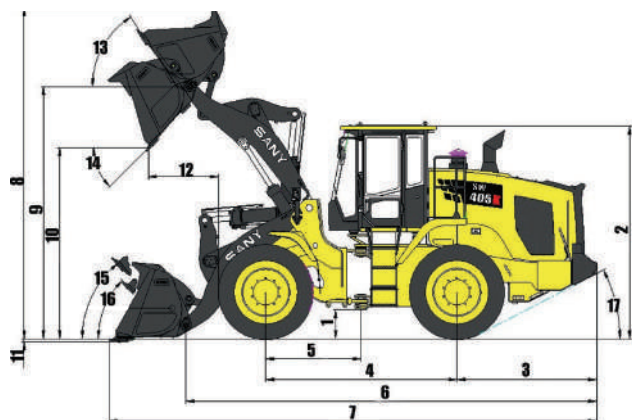
Product Specifications

OPERATING WEIGHT
18,500 kg

RATED POWER
262 hp / 195 kW

BUCKET CAPACITY
3.0m³

ENGINE
Deutz TCD 7.8



OVERALL DIMENSIONS

	Standard	Metric
1 Height to Axle Centerline	17.32"	440 mm
2 Height to Top of Cab	138.86"	3527 mm
3 Center Line or Rear Axle to Edge of Counterweight	91.73"	2330 mm
4 Wheelbase	125.98"	3200 mm
5 Center Line of Rear Axle to Hitch	63"	1600 mm
6 Shipping Length without Attachment	270.16"	6862 mm
7 Shipping Length with Bucket	320.55"	8142 mm
8 Max. Dump Height	214.21"	5441 mm
9 Hinge Pin Height at Max. Lift	162.72"	4133 mm
10 Dump Clearance at Max. Lift	122.76"	3118 mm
11 The lowest Dump to the Ground	2.2"	56 mm
12 Reach at Max. Lift and 45° Discharge	44.88"	1140 mm
13 Rack Back at Max. Lift		58°
14 Dump Angle at Max. Lift and Dump		45°
15 Rack Back at Carry Height		51°
16 Rack Back at Ground		45°
17 Tail Angle to the rear wheel		27°
18 Clearance Circle to Outside of Tires	228.35"	5800 mm
19 Clearance Circle to Counterweight	232.72"	5911 mm
20 Max. Circle	254.17"	6456 mm
21 Width of the Bucket	117.13"	2975 mm
22 Width	86.61"	2200 mm
23 Articulation Angle		+/- 40°

MACHINE PARAMETERS

Engine	Engine Model	Deutz TCD7.8
	Max Gross Power	195kw
	Max Gross Torque	1305 Nm
	Displacement	7.8 ltr
Operating	Bucket Capacity	3.0m ³
	Tipping Load Straight	14,500kg
	Tipping Load @ full Turn	13,100kg
	Clearance (full lift 45° dump)	310cm
	Reach (full lift 45° dump)	117cm
Weight	Operating Weight	18,500kg
Hydraulic System	Pump Model	Implement - Kawasaki
	Max Flow	Steering - Eaton/Danfoss
	Max Pressure	307 L/mil
		3916 PSI
Hydraulic Cycle Times	Raise	5.4 sec
	Dump	1.9 sec
	Float Down	3.3 sec
	Total Cycle Time	10.6 sec
Service Capacities	Fuel Tank	322L
	Cooling System	20L
	Engine Crankcase	22.7L
	Transmission	17.8L
	Front Axle	18.9L
	Rear Axle	18.9L
	Hydraulic Tank	117L
	DEF Tank	39.8L
Transmission	Shift Modes	Automatic, Manual, KD
	Forward Gear 1	7km/h
	Forward Gear 2	13km/h
	Forward Gear 3	26km/h
	Forward Gear 4	40km/h
	Reverse Gear 1	7km/h
	Reverse Gear 2	13km/h
	Reverse Gear 3	26km/h
Power Train	Front Axle	Fixed
	Traction Aid	Manual Differential Lock
	Rear Axle	Oscillating
	Traction Aid	Open differential
	Service Brakes	Wet Disk
	Parking Brake	SAHR Disk Brake

