

ULTIMATE PERFORMANCE



MADE FOR AUSTRALIAN CONDITIONS



WHEEL LOADER **XC988**

Product Specifications

OPERATING WEIGHT
26,470 kg

RATED POWER
250 kW / 2100 rpm

BUCKET CAPACITY
5m³

BATTERY
Cummins X12

Built for tough Aussie conditions.



PRODUCT HIGHLIGHTS

EXCELLENT PRODUCTIVITY, FUEL EFFICIENCY, COMFORT AND CONTROL

- High powered engine
- Full-variable electro-hydraulic proportional control
- Reinforced wet axle
- Optimised three-section drive shaft
- Fully adjustable air suspension seat and armrest
- Automatic lubrication
- Fully sound-proofed cab

SAFETY, SERVICEABILITY AND TELEMATICS

- Reverse camera
- Engine connection diagnostics
- Centralised pressure measurement
- Easy to change filters
- Optional generator emergency stop
- Hood system

MACHINE WALKAROUND

POWER SYSTEM

Cummins X12
 Engine oil remote drainage
 Intake preheating
 Fuel pre-filter with water separator
 Reversible cooling fan
 Centrifugal air pre-filter
 Coolant drain outlet port
 Turbocharger flameout delay
 Fast fill system
 Rapid engine oil filling system

TORQUE CONVERTER TRANSMISSION

Manual/ automatic shift
 Rapid transmission oil filling system

HYDRAULIC SYSTEM

Two-way electric control valve
 Piston pump
 Hydraulic oil cooler
 Diagnostic pressure fittings
 Independent cooling system
 Boom lift limit
 Automatic bucket levelling
 Forward and backward turning fan
 Double acting hydraulic cylinder
 Steering wheel steering*
 Emergency steering
 Drive stability system (RIDE control)
 Anti-explosion valve (lifting system)*
 Rapid hydraulic oil filling system
 Three-way working hydraulic system*
 Handle steering system

LIGHTING & ALARM SYSTEM

Dual LED headlight (high and low beams)
 Dual brake light (tail light)
 Turn signal light (+ flickering hazard indicator)
 LED working lights (4 front, 2 rear)

Rotating beacon
 Horn

PRESSURE INSPECTION

Working system pressure diagnostic interface
 Steering system pressure diagnostic interface
 Transmission pressure diagnostic interface

AUTOMATIC LUBRICATION SYSTEM

Automatic lubrication system
 Single-line lubrication system*

EXTERNAL DEVICE

Left and right anti-slip rack
 Front fender
 Traction pin
 Articulated locking rod
 Rear hood fender
 Protection plate for transmission bottom

BRAKE SYSTEM

Independent dual-circuit service brake
 Parking brake, and electro-hydraulic control
 Single-pedal brake system
 Dual-pedal brake system

ELECTRICAL SYSTEM

Air filter clogging alarm display
 Battery voltage display
 Fuel level display
 Engine speed display
 Engine oil pressure display
 Engine coolant temperature display
 Engine fault code display
 Transmission oil temperature display
 Transmission fault code display
 Parking brake display
 Low pressure brake alarm display
 Reverse camera system

Front and rear windshield washers + wipers
 Main power supply switch
 FM radio
 Hood lift button
 360° reverse camera system*
 Weighing system*
 Reverse sensor system*
 Engine emergency stop function

CAB

ROPS/FOPS cab
 Interior rearview mirror (1 piece)
 Exterior rearview mirror (2 piece)
 Right openable window
 Non-slip mat (indoor)
 FNR joysticks
 Front and rear sunshade
 Front and rear wipers
 Adjustable air suspension seat
 Seat belt
 Tinted safety glass
 Cup holder
 Door lock key
 Air conditioning system
 Cab pressurisation system
 Rearview mirror with electric heater (exterior)*
 Glass protective net (front)*
 Glass protective net (rear)*
 Three-point seat belt*

ANTI-CORROSION TECHNOLOGY

Complete machine subject to heavy-duty coating*
 Electrical wiring harness sealed with glue*

OPERATING LINK SYSTEM

Label arm
 High-dump boom*
 4.0 - 8.0 bucket*

*Optional inclusion

PRODUCTIVITY & DURABILITY

EFFECTIVE | FUEL EFFICIENT | RELIABLE

The XCMG XC988 loader delivers powerful performance, advanced efficiency, and rugged reliability tailored for Australia's toughest job sites. Combining intelligent design with premium components, the XC988 ensures maximum productivity, durability, and operator comfort in demanding conditions.

HYDRAULIC SYSTEM

The working hydraulic system adopts a load-sensitive variable and electro-hydraulic proportional control technology, to provide pressure and flow on demand.

REINFORCED WET AXLE

Both front and rear axles utilise wet-type drive axles with maintenance-free multi-disc wet brakes, extending axle service life.

The front axle is equipped with a differential lock function to enhance machine passability in harsh operating environments.

ENGINE

The Cummins X12 engine features electronic fuel injection, turbocharging, and air-to-air intercooling technologies, with electric start/stop capabilities.

It not only delivers high reliability and adaptability, but also offers the advantages of low fuel consumption and reduced emissions.

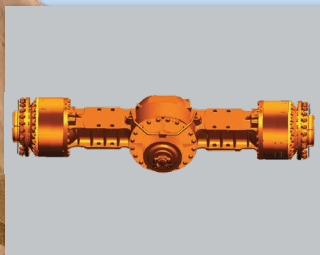
Equipped with a three-stage air filtration system and multi-stage air filtration system and multi-stage fuel filtration system, it is capable of meeting operational demands across diverse working conditions.

DRIVE SHAFT

The three-section driveshaft design effectively distributes stress during steering manoeuvres. Key-block connections at shaft joints provide superior anti-loosening performance, ensuring exceptionally stable and reliable torque transmission.

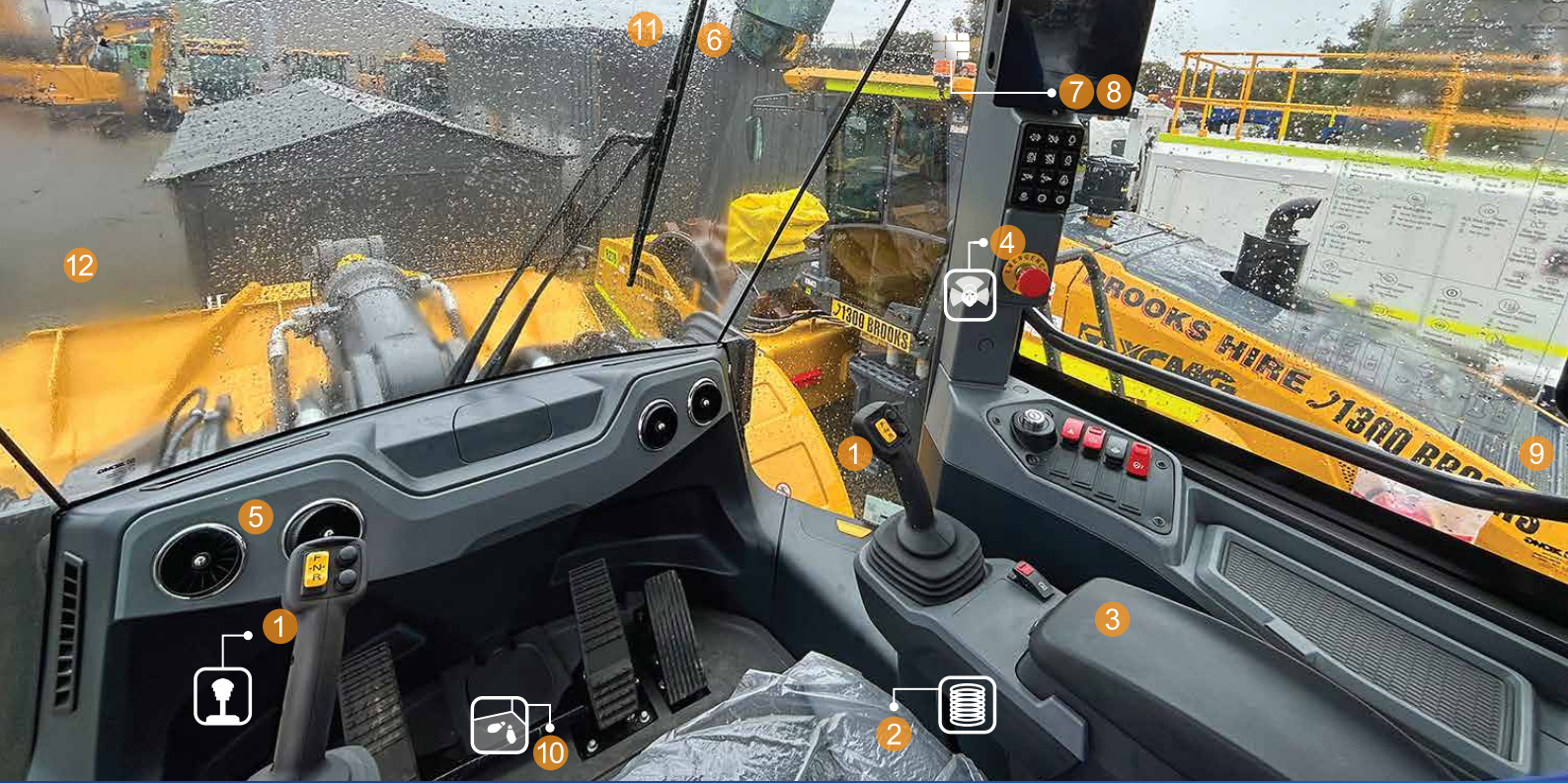
HYDRAULIC HOSE

The hydraulic hose inner layer is made with oil-resistant synthetic rubber, and its outer layer is made with wear-resistant and anti-aging synthetic rubber; capable of adapting to harsh working conditions and pressures.



"A really friendly group of people with a huge range of equipment."

Alan Hall - Brooks Equipment Customer



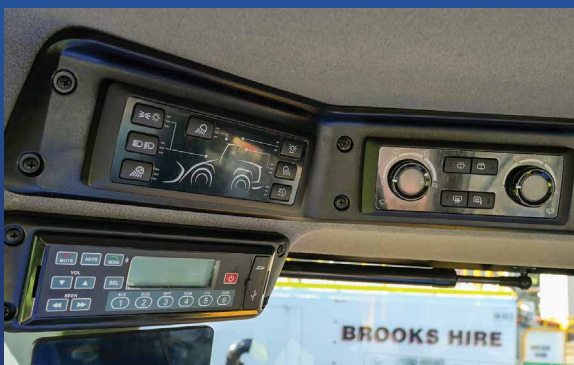
CONFIGURED FOR EASE OF CONTROL

FEATURES

- 1 FNR piloted joystick
- 2 Adjustable air-suspension seat
- 3 Adjustable arm support
- 4 Emergency stop
- 5 AC/ heating
- 6 Front and rear wipers
- 7 Colour LCD monitor
- 8 360° reverse camera
- 9 Right openable window
- 10 Non-slip mat
- 11 Front and rear sunshade
- 12 Tinted safety glass

EASY CONTROL & COMFORTABLE OPERATION

- The ROPS & FOPS cab is micro-pressurised for excellent sealing which effectively blocks external dust. The spacious interior also features wide visibility, and comfortable operation with a fully adjustable air suspension seat and armrests.
- Featuring electro-hydraulic proportional control, the FNR control lever integrates KD gear function for effortless and comfortable operation.
- The cab's connection to the frame via silicone shock absorbers, significantly reduce vibration.
- The load-sensing, flow-amplifying full hydraulic articulated steering system, enhances energy efficiency. A small-displacement steering unit acts as a pilot to control a flow-amplifying valve, enabling quick steering response while significantly reducing steering wheel effort for smoother and easier operation.
- The combination LCD dashboard uses a next-gen CAN bus digital cluster with an LCD display. It includes diagnostic functions for engine and transmission fault codes, and provides real-time monitoring of machine status. Audible and visual alarms alert the operator immediately in case of any detected faults, ensuring timely inspection and maintenance.



DESIGNED TO PERFORM BUILT TO LAST

OPTIMAL SAFETY | EASY SERVICEABILITY

REVERSE CAMERA

The advanced reversing camera provides drivers with an expansive rear working view, delivering reliable safety during operation.

GENERATOR EMERGENCY STOP

The optional generator emergency stop buttons are located both inside and outside of the cab, enabling immediate engine shutdown during critical situations to enhance operational safety.

CABIN PROTECTION

The ROPS/FOPS micro-pressurised cab effectively seals out external dust, reduces vibration, and provides sound insulation.

BRAKE SYSTEM

Full hydraulic dual-circuit wet service brakes and caliper disc parking brakes, feature independent front/rear axle braking with low-pressure alarm protection. Emergency brake combines with parking brake to ensure operational safety.

Service Brake

Fully-hydraulic wet brake.

Parking Brake

Electronically controlled disc brakes.

Emergency Brake

The cab is equipped with a parking brake rocker switch that also functions as an emergency brake. Both the interior and exterior of the cab can be optionally equipped with emergency stop buttons for engine shutdown, enhancing driving safety.

ENGINE CONNECTION DIAGNOSTICS

The cab interior comes pre-equipped with an engine diagnostic port, allowing for engine fault diagnosis when connected to a computer.

HOOD SYSTEM

The "integral-type" large-angle, rear-tilting hood exposes the engine and radiator when opened, enabling quick and convenient maintenance.

CENTRALISED PRESSURE MANAGEMENT

Pressure points from the working, steering, and transmission systems are centrally routed and arranged for convenient testing.

EASY TO CHANGE FILTERS

When opened, all daily maintenance filters are easily accessible for replacement.

RIDE CONTROL

The optional ride control system enhances operator comfort and machine stability by minimising bounce during travel. It improves load retention, reduces material spillage, and extends component life - boosting productivity and lowering maintenance costs.

AUTOMATIC LUBRICATION

The optional automatic lubrication system reduces wear, extends the life of pins and bushings, and eliminates the guesswork of manual maintenance; keeping your loader running smoothly and minimising downtime.



TRUE VERSATILITY

- XC988 AT A GLANCE -



XC988

Wheel Loader

DIMENSIONS & SPECIFICATIONS



Scan to view the XC988 product brochure

MAIN SPECIFICATIONS

MODEL

Operating Weight	26470 kg
Rated Load	8500 kg
Bucket Capacity	5.0 m ³
Max. Breakout Force	240 kN
Tipping Load:	
Straight	≥20000 kg
Full	≥17000 kg

ENGINE

Type	Cummins X12
	Inline 6 cylinder, electronic fuel injection, turbocharged, high pressure common rail
Rated Power	250 kW / 2100 rpm
Max. Power	336 kW / 1800 rpm
Peak Torque	1898 Nm / 1200~1600 rpm
Displacement	11.8 L

DRIVE SYSTEM

Model	4WG260
Category	Fixed-shaft electro-hydraulic shift transmission
Gear	Forward 4, reverse 3
Travel Speed	- Forward 1/2/3/4 6.6, 12.3, 26, 39 km/h
	- Reverse 1/2/3 6.6, 12.3, 26 km/h
Brake Distance	≤11 m
Drive System	Four-wheel actuation system
Front Axle	Fixed
Rear Axle	Oscillation angle 13°
Hub Reduction	Planetary wheel-end reduction
Differential	Front: limited slip differential
Speed Ratio	24.706

HYDRAULIC SYSTEM

Type	Full-variable hydraulic system
Pump	Piston pump + piston pump
Rated Displacement	(110+110) L/min
Control Valve	Electrically-controlled two-way multi-tandem valve
System Pressure	26 MPa
Lift Circuit	Yes
Tilt Circuit	Yes
Hydraulic Oil	Double drive
Lift Duration	2-180 x 840 mm
Tilt Circuit	1-200 x 543 mm
Total Cycle Time:	≤6.5 s
	≤11.5 s

NOISE

Exterior sound power level at cooling fan max. speed	115 dB(A)
Operator sound pressure level	79 dB(A)
Exterior sound power level	114 dB(A)

STEERING SYSTEM

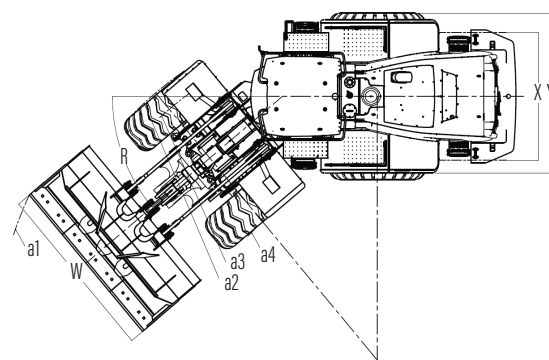
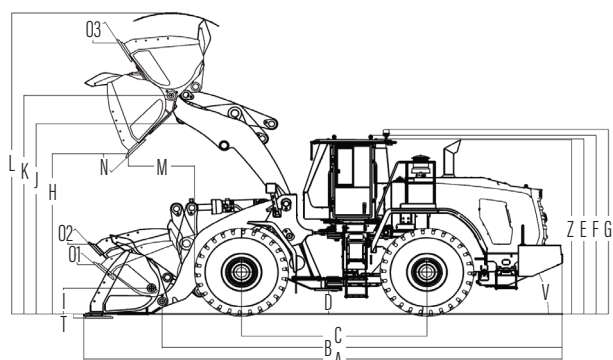
Type	Load-sensing flow amplification steering; articulated steering
Pump	Piston pump
Rated Displacement	110 L/min
System Pressure	21 MPa
Cylinder	Dual steering cylinder
Steering Angle	±40°
Features	Centre closed structure

REFILL CAPACITIES

Fuel Tank	400 L
Cooling System	65 L
Engine Oil	34 L
Transmission	50 L
Front Axle	64 L
Rear Axle	64 L
Hydraulic Tank	160 L
Hydraulic System (Including tank)	Approx. 274 L

DIMENSIONS & WORKING SCOPE

A	Transport length (bucket flat on ground)	9060 mm
B	Overall length (without bucket)	6850 mm
C	Wheel base	3350 mm
D	Min. ground clearance	488 mm
Z	Height - top of exhaust pipe	3530 mm
E	- top of cab	3620 mm
F	- cab roof lug	3660 mm
G	- top of warning light	3810 mm
L	Max. lift height	6115 mm
K	Pivot height at max. lifting	4395 mm
J	Lift arm clearance at max. lifting	3830 mm
N	Dumping angle for max. lifting and dumping	45°
H	Dumping height for max. lifting and 45° dumping	3140 mm
M	Dumping reach for max. lifting and 45° dumping	1290 mm
T	Digging depth	100 mm
I	Pivot height at transport position	500 mm
O1	Rollback angle - on ground	43°
O2	- at transport position	49°
O3	- at highest position	56°
R	Steering angle	40°
a1	Turning radius (outside of bucket)	7180 mm
a2	Radius of the outside of tyre	6375 mm
a3	Turning radius (centre of outside tyre)	6037 mm
a4	Radius of the inside of tyre	3380 mm
X	Wheel track	2320 mm
Y	Overall width	2295 mm
V	Gradeability	≥26°
W	Bucket width	3230 mm



SERVICE LIKE NO OTHER



With a dedicated Field Service team of qualified HD Mechanics, and access to OEM parts, you're connected to the best after sales support for your machine's full lifetime.

QUALITY



Quality tested machines, developed and built for Australian conditions.

GUARANTEE



All of our XCMG models come with first class warranty cover.

ANY TIME



Our team of experts are available 24 hours a day, 7 days a week.



PARTS ON YOUR DOORSTEP

Access to parts and support is made easy through XCMG's Australian Technical and Service Centre.

SUPPORT FROM BRANCHES AUSTRALIA WIDE



With Brooks Equipment branches Australia-wide, you have complete coverage for support and servicing, wherever you are in the country.

BROOKS

EQUIPMENT

Discover more about your XCMG machine



1300 BROOKS (276 657)

@ sales@brooksequipment.com.au

www.brooksequipment.com.au